

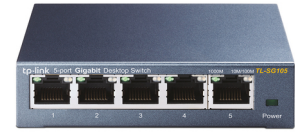


TP-Link 5-Port 10/100/1000Mbps Desktop Network Switch

Brand : TP-Link

Product code: TL-SG105 V4

Product name : 5-Port 10/100/1000Mbps Desktop Network Switch



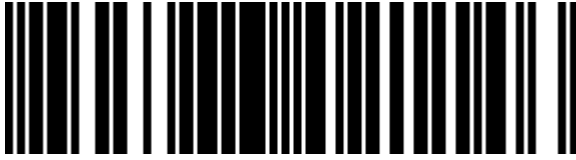
- 5 10/100/1000Mbps Auto-Negotiation RJ45 ports supporting Auto-MDI/MDIX
- Green Ethernet technology saves the power up to 84%
- IEEE 802.3x flow control provides reliable data transfer
- Steel housing, desktop or wall-mounting design
- Support 802.1p/DSCP QoS* and IGMP Snooping function
- Plug and play ,no configuration needed

5 10/100/1000Mbps, Auto-Negotiation, Auto-MDI/MDIX Ports, IEEE 802.3i/802.3u/ 802.3ab/802.3x, IEEE 802.1p, 99.8 x 98 x 25 mm, 220V/50Hz

TP-Link 5-Port 10/100/1000Mbps Desktop Network Switch. Switch type: Unmanaged. Basic switching RJ-45 Ethernet ports type: Gigabit Ethernet (10/100/1000), Basic switching RJ-45 Ethernet ports quantity: 5. Full duplex. MAC address table: 2000 entries, Switching capacity: 10 Gbit/s. Networking standards: IEEE 802.1p, IEEE 802.3ab, IEEE 802.3i, IEEE 802.3u, IEEE 802.3x. Power connector: DC-in jack

Management features		Design	
Switch type *	Unmanaged	LED indicators	✓
Quality of Service (QoS) support	✓	Power	
Ports & interfaces		Power source *	DC
Basic switching RJ-45 Ethernet ports quantity *	5	Power supply included *	✓
Basic switching RJ-45 Ethernet ports type *	Gigabit Ethernet (10/100/1000)	Input current	0.6 A
Gigabit Ethernet (copper) ports quantity	5	Input voltage	9 V
Power connector	DC-in jack	Power consumption (max)	2.3 W
Network		Power over Ethernet (PoE)	
Networking standards *	IEEE 802.1p, IEEE 802.3ab, IEEE 802.3i, IEEE 802.3u, IEEE 802.3x	Power over Ethernet (PoE) *	✗
10G support *	✗	Other features	
Full duplex	✓	Connectivity technology	Wired
Flow control support	✓	Wi-Fi	✗
Auto MDI/MDI-X	✓	Power LED	✓
Ethernet LAN data rates	10,100,1000 Mbit/s	Ethernet LAN	✓
Auto-negotiation	✓	Operational conditions	
Data transmission		Operating temperature (T-T)	0 - 40 °C
Supported data transfer rates	10/100/1000Mbps	Storage temperature (T-T)	-40 - 70 °C
Switching capacity *	10 Gbit/s	Operating relative humidity (H-H)	10 - 90%
Forwarding rate	7.4 Mpps	Storage relative humidity (H-H)	5 - 90%
MAC address table *	2000 entries	Heat dissipation	7.83 BTU/h
Store-and-forward	✓	Weight & dimensions	
Maximum data transfer rate	2 Gbit/s	Width	100 mm
Jumbo frames support	✓	Depth	98 mm
Jumbo frames	16000	Height	25 mm
Packet buffer memory	1 MB	Packaging content	
Security		User guide	✓
IGMP snooping	✓	Rack mount kit	✓
		Packaging data	
		Package type	Box

Protocols		Packaging data	
Switching protocols	CSMA/CD	Package width	125 mm
Design		Package depth	128 mm
Product colour	Black	Package height	92 mm
		Package weight	370 g
		Certificates	
		Certification	CE, FCC, RoHS



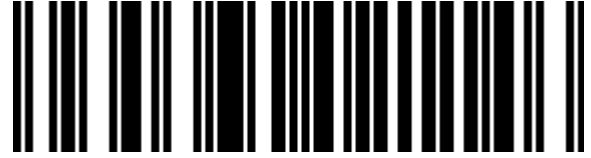
0845973021146



845973021146



6935364021320



6935364021146

Disclaimer. The information published here (the "Information") is based on sources that can be considered reliable, typically the manufacturer, but this Information is provided "AS IS" and without guarantee of correctness or completeness. The Information is only indicative and can be changed at any time without notification. No rights can be based on the Information. Suppliers or aggregators of this Information do not accept any liability with regard to the content of (web)pages and other documents, including its Information. The publisher of the Information can not be held liable for the content of 3rd party websites that are linking this Information or are linked to from this Information. You as the User of the Information are solely responsible for the choice and usage of this Information. You are not entitled to transfer, copy or otherwise multiply or distribute the Information. You are obliged to follow the directions of the copyright owner(s) with regard to the use of the Information. Exclusively Dutch law is applicable. With regard to price and stock data on the site, the publisher followed a number of starting points, which are not necessarily relevant for your private or business circumstances. Therefore, the price and stock data are only indicative and are subject to changes. You are personally responsible for the way you use and apply this information. As a user of the Information or sites or documents in which this Information is included, you will adhere to standard fair use including avoidance of spamming, ripping, intellectual-property violations, privacy violations, and any other illegal activity.