

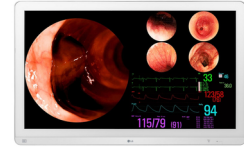


## LG 32HL710S-W LED display 80 cm (31.5") 3840 x 2160 pikseliä 4K Ultra HD Hopea, Valkoinen

Tuotemerkki : LG

Tuotekoodi: 32HL710S-W

Tuotteen nimi : 32HL710S-W



LG 32HL710S-W. Näytön halkaisija: 80 cm (31.5"), Näytön erottelutarkkuus: 3840 x 2160 pikseliä, HD-tyyppi: 4K Ultra HD, Näytön teknologia: LED, Vasteaika (tyypillinen): 14 ms, Vakiokuvasuhde: 9:16, Katselukulma, vaakasuora: 178°, Katselukulma, pystysuora: 178°. Tuotteen väri: Hopea, Valkoinen



| Display                        |                       | Ports & interfaces      |                   |
|--------------------------------|-----------------------|-------------------------|-------------------|
| Display diagonal *             | 80 cm (31.5")         | HDMI *                  | ✓                 |
| Display resolution *           | 3840 x 2160 pixels    | HDMI ports quantity     | 1                 |
| HD type *                      | 4K Ultra HD           | HDMI version            | 2.0               |
| Native aspect ratio *          | 9:16                  | DisplayPorts quantity   | 2                 |
| Display technology *           | LED                   | Audio input             | ✗                 |
| Panel type *                   | IPS                   | Headphone out *         | ✗                 |
| Backlight type                 | LED                   | DC-in jack              | ✓                 |
| Touchscreen *                  | ✗                     | RS-232 ports            | 1                 |
| Display brightness (typical)   | 800 cd/m <sup>2</sup> |                         |                   |
| Response time *                | 14 ms                 |                         |                   |
| Screen shape *                 | Flat                  |                         |                   |
| Supported graphics resolutions | 3840 x 2160           |                         |                   |
| Aspect ratio                   | 16:9                  |                         |                   |
| Contrast ratio (typical) *     | 1000:1                |                         |                   |
| Viewing angle, horizontal      | 178°                  |                         |                   |
| Viewing angle, vertical        | 178°                  |                         |                   |
| Response time (fast)           | 5 ms                  |                         |                   |
| Pixel pitch                    | 0.18159 x 0.18159 mm  |                         |                   |
| Colour gamut standard          | sRGB                  |                         |                   |
| Colour gamut                   | 99%                   |                         |                   |
| sRGB coverage (typical)        | 115%                  |                         |                   |
|                                |                       |                         |                   |
| Performance                    |                       | Ergonomics              |                   |
| NVIDIA G-SYNC *                | ✗                     | Number of OSD languages | 17                |
| AMD FreeSync *                 | ✗                     |                         |                   |
| Multimedia                     |                       | Power                   |                   |
| Built-in speaker(s) *          | ✗                     | Power consumption (max) | 120 W             |
| Built-in camera *              | ✗                     | Power consumption (off) | 0.3 W             |
|                                |                       | AC input voltage        | 100 - 240 V       |
|                                |                       | AC input frequency      | 50 - 60 Hz        |
| Design                         |                       | Weight & dimensions     |                   |
| Market positioning *           | Business              | Width (without stand)   | 764.6 mm          |
| Product colour *               | Silver, White         | Depth (without stand)   | 94.4 mm           |
|                                |                       | Height (without stand)  | 480.8 mm          |
|                                |                       | Weight (without stand)  | 12.2 kg           |
| Ports & interfaces             |                       | Packaging data          |                   |
| Built-in USB hub *             | ✗                     | Package width           | 883 mm            |
| USB upstream port type         | USB Type-B            | Package depth           | 200 mm            |
|                                |                       | Package height          | 599 mm            |
|                                |                       | Package weight          | 17.2 kg           |
|                                |                       | Quantity per pack       | 1 pc(s)           |
|                                |                       |                         |                   |
|                                |                       | Packaging content       |                   |
|                                |                       | Cables included         | DisplayPort, HDMI |
|                                |                       | Other features          |                   |
|                                |                       | RS-232 interface        | ✓                 |
|                                |                       | Compliance certificates | RoHS              |

| Ports & interfaces   |   | Other features  |
|----------------------|---|---|
| DVI port             | ✓ | IEC (IEC 60601-1/IEC 60601-1-2)<br>cUL (ANSI/AAMI ES 60601-1, CSA<br>CAN/CSA-C22.2 NO. 60601-1) FDA<br>ISO13485 KGMP REACH MFDS<br>Vandal-proof IK06 EN (EN<br>60601-1/EN 60601-1-2) FCC (FCC<br>part 15 Class A) CE (MDD<br>93/42/EEC, 2007/47/EC) GMP WEEE<br>IP (front/except for front) IP35/IP32 |
| DVI-D ports quantity | 2 |   |
|                      |   | Certification   |



8806098606337

Disclaimer. The information published here (the "Information") is based on sources that can be considered reliable, typically the manufacturer, but this Information is provided "AS IS" and without guarantee of correctness or completeness. The Information is only indicative and can be changed at any time without notification. No rights can be based on the Information. Suppliers or aggregators of this Information do not accept any liability with regard to the content of (web)pages and other documents, including its Information. The publisher of the Information can not be held liable for the content of 3rd party websites that are linking this Information or are linked to from this Information. You as the User of the Information are solely responsible for the choice and usage of this Information. You are not entitled to transfer, copy or otherwise multiply or distribute the Information. You are obliged to follow the directions of the copyright owner(s) with regard to the use of the Information. Exclusively Dutch law is applicable. With regard to price and stock data on the site, the publisher followed a number of starting points, which are not necessarily relevant for your private or business circumstances. Therefore, the price and stock data are only indicative and are subject to changes. You are personally responsible for the way you use and apply this information. As a user of the Information or sites or documents in which this Information is included, you will adhere to standard fair use including avoidance of spamming, ripping, intellectual-property violations, privacy violations, and any other illegal activity.

Publication date: 25-DEC-2024. Prints or copies of Information are only valid on the printed Publication date