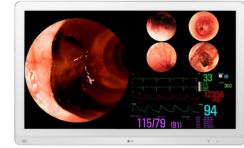




LG 32HL710S-W LED display 80 cm (31.5") 3840 x 2160 pixels 4K Ultra HD Silver, White



Brand : LG

Product code: 32HL710S-W

Product name : 32HL710S-W

- 31.5 (80.01cm) 4K (3840x2160) IPS
- Support HDR10
- Mirror & Rotation Mode
- Up to 4PBP, PIP
- Dustproof, Water Resistant
- Protection Glass

31.5 4K 3840 x 2160 IPS, 16:9, 14ms, DVI, HDMI, RS-232, 3G-SDI, 17.2 kg
 LG 32HL710S-W. Display diagonal: 80 cm (31.5"), Display resolution: 3840 x 2160 pixels, HD type: 4K Ultra HD, Display technology: LED, Response time: 14 ms, Native aspect ratio: 9:16, Viewing angle, horizontal: 178°, Viewing angle, vertical: 178°. Product colour: Silver, White

Display		Ports & interfaces	
Display diagonal *	80 cm (31.5")	HDMI *	✓
Display resolution *	3840 x 2160 pixels	HDMI ports quantity	1
HD type *	4K Ultra HD	HDMI version	2.0
Native aspect ratio *	9:16	DisplayPorts quantity	2
Display technology *	LED	Audio input	✗
Panel type *	IPS	Headphone out *	✗
Backlight type	LED	DC-in jack	✓
Touchscreen *	✗	RS-232 ports	1
Display brightness (typical)	800 cd/m ²	Ergonomics	
Response time *	14 ms	Number of OSD languages	17
Screen shape *	Flat	Power	
Supported graphics resolutions	3840 x 2160	Power consumption (max)	120 W
Aspect ratio	16:9	Power consumption (off)	0.3 W
Contrast ratio (typical) *	1000:1	AC input voltage	100 - 240 V
Viewing angle, horizontal	178°	AC input frequency	50 - 60 Hz
Viewing angle, vertical	178°	Weight & dimensions	
Response time (fast)	5 ms	Width (without stand)	764.6 mm
Pixel pitch	0.18159 x 0.18159 mm	Depth (without stand)	94.4 mm
Colour gamut standard	sRGB	Height (without stand)	480.8 mm
Colour gamut	99%	Weight (without stand)	12.2 kg
sRGB coverage (typical)	115%	Packaging data	
Performance		Package width	883 mm
NVIDIA G-SYNC *	✗	Package depth	200 mm
AMD FreeSync *	✗	Package height	599 mm
Multimedia		Package weight	17.2 kg
Built-in speaker(s) *	✗	Quantity per pack	1 pc(s)
Built-in camera *	✗	Packaging content	
Design		Cables included	DisplayPort, HDMI
Market positioning *	Business	Other features	
Product colour *	Silver, White	RS-232 interface	✓
Ports & interfaces		Compliance certificates	RoHS
Built-in USB hub *	✗		
USB upstream port type	USB Type-B		

Ports & interfaces		Other features
DVI port	✓	IEC (IEC 60601-1/IEC 60601-1-2) cUL (ANSI/AAMI ES 60601-1, CSA CAN/CSA-C22.2 NO. 60601-1) FDA ISO13485 KGMP REACH MFDS Vandal-proof IK06 EN (EN 60601-1/EN 60601-1-2) FCC (FCC part 15 Class A) CE (MDD 93/42/EEC, 2007/47/EC) GMP WEEE IP (front/except for front) IP35/IP32
DVI-D ports quantity	2	
		Certification



8806098606337

Disclaimer. The information published here (the "Information") is based on sources that can be considered reliable, typically the manufacturer, but this Information is provided "AS IS" and without guarantee of correctness or completeness. The Information is only indicative and can be changed at any time without notification. No rights can be based on the Information. Suppliers or aggregators of this Information do not accept any liability with regard to the content of (web)pages and other documents, including its Information. The publisher of the Information can not be held liable for the content of 3rd party websites that are linking this Information or are linked to from this Information. You as the User of the Information are solely responsible for the choice and usage of this Information. You are not entitled to transfer, copy or otherwise multiply or distribute the Information. You are obliged to follow the directions of the copyright owner(s) with regard to the use of the Information. Exclusively Dutch law is applicable. With regard to price and stock data on the site, the publisher followed a number of starting points, which are not necessarily relevant for your private or business circumstances. Therefore, the price and stock data are only indicative and are subject to changes. You are personally responsible for the way you use and apply this information. As a user of the Information or sites or documents in which this Information is included, you will adhere to standard fair use including avoidance of spamming, ripping, intellectual-property violations, privacy violations, and any other illegal activity.

Publication date: 25-DEC-2024. Prints or copies of Information are only valid on the printed Publication date