

utouch

User's manual
Z-Brackets for U-Click
Large Format Display Options

Based on
MultiSync® X555UNS PG (Protective Glass)

Table of Contents

- 1. Introduction 3**
- 2. Required tools and screws 8**
- 3. Steps how to install Z-Brackets on video wall 9**
- 4. Technical overview 15**

1. Introduction

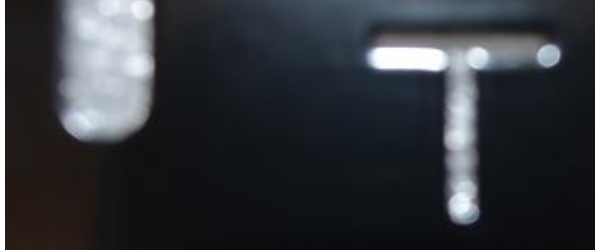
Z-Brackets have been designed as a part of modular touch system. This solution is a frame to hold modular touch system on top of video wall's monitors.



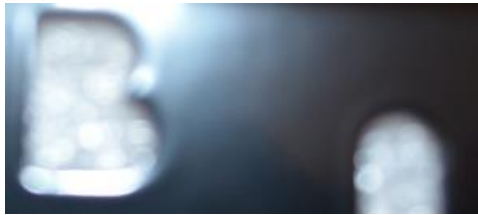
Z-Brackets as a frame over video wall

There are four types of Z-Brackets:

- Top brackets, marked in the middle of its length as:



- Bottom brackets, marked in the middle of its length as:



- Right brackets, marked in the middle of its length as:



- Left brackets, marked in the middle of its length as:



Each Z-Bracket consists of two parts:

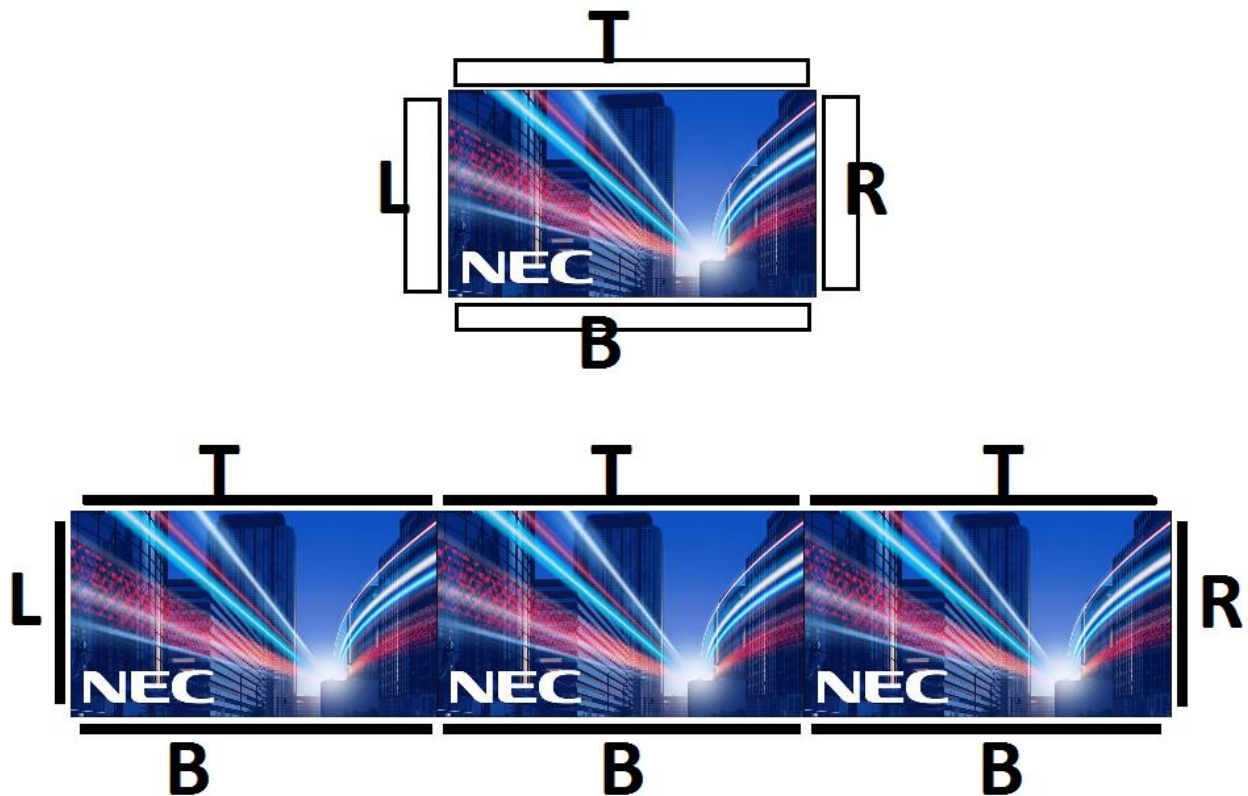
Bracket

L-shaped base



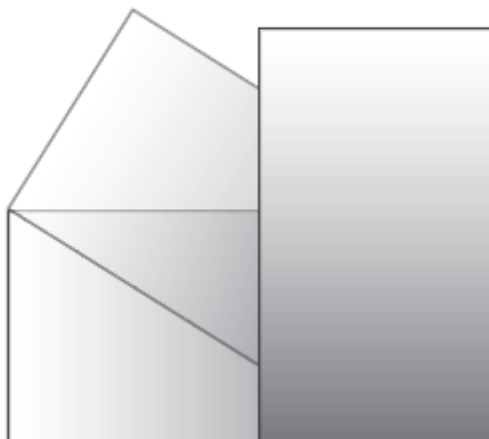
Bracket's marking in Landscape and Portrait configuration:

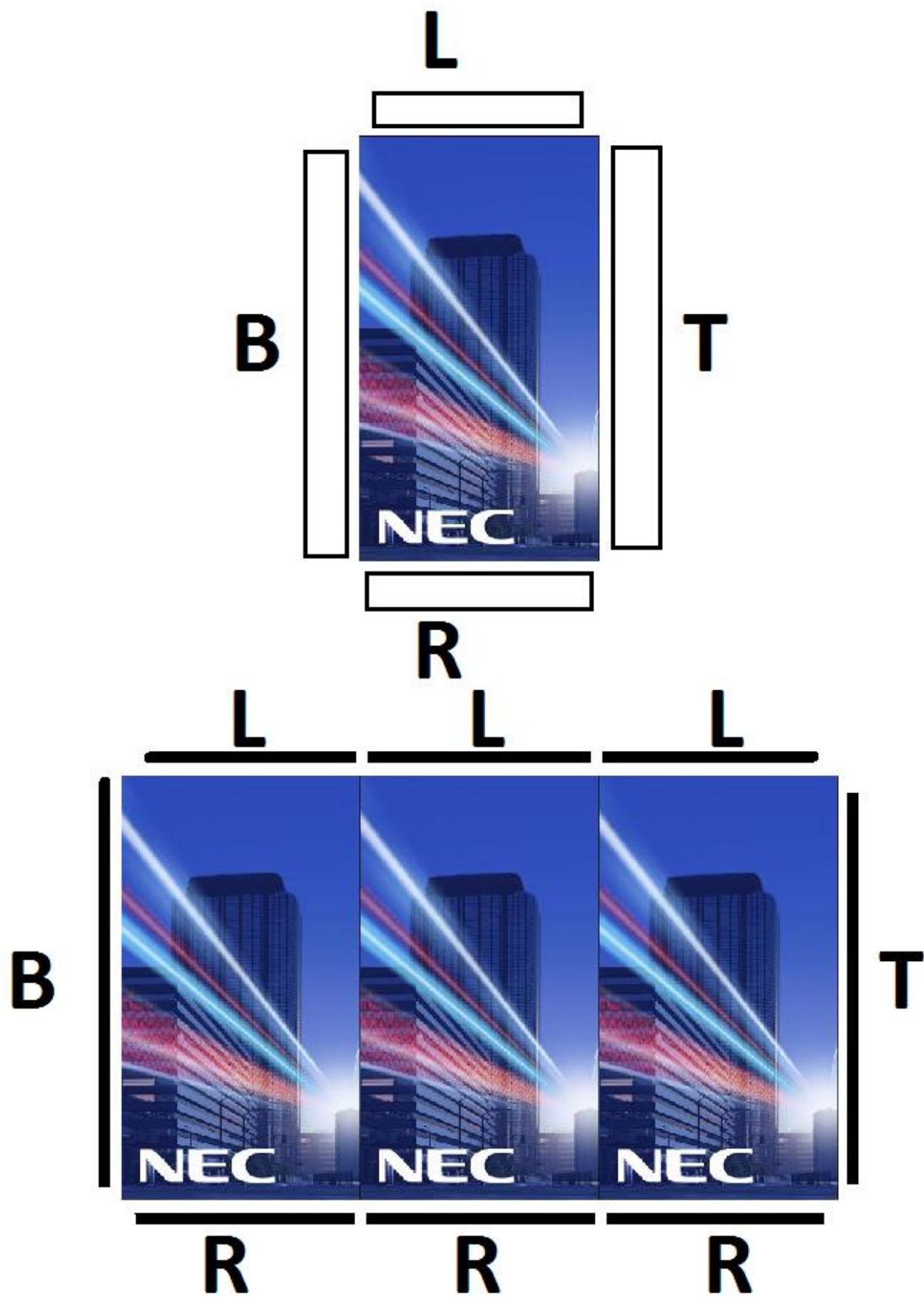
Landscape:



Portrait:

- When using the display in the portrait position, the monitor should be rotated clockwise so that the left side is moved to the top, right side is moved to the bottom. This will allow for proper ventilation and will extend the lifetime of the monitor. Improper ventilation may shorten the lifetime of the monitor.





2. Required Tools and Screws



- **Hand – driven screws** (provided in accessory box)
- **Hand – driven nuts** (provided in accessory box)
- **M3 screws** 5mm (provided in accessory box)
- **M3 PH1 screwdriver**
- **Ladder** (in some cases)

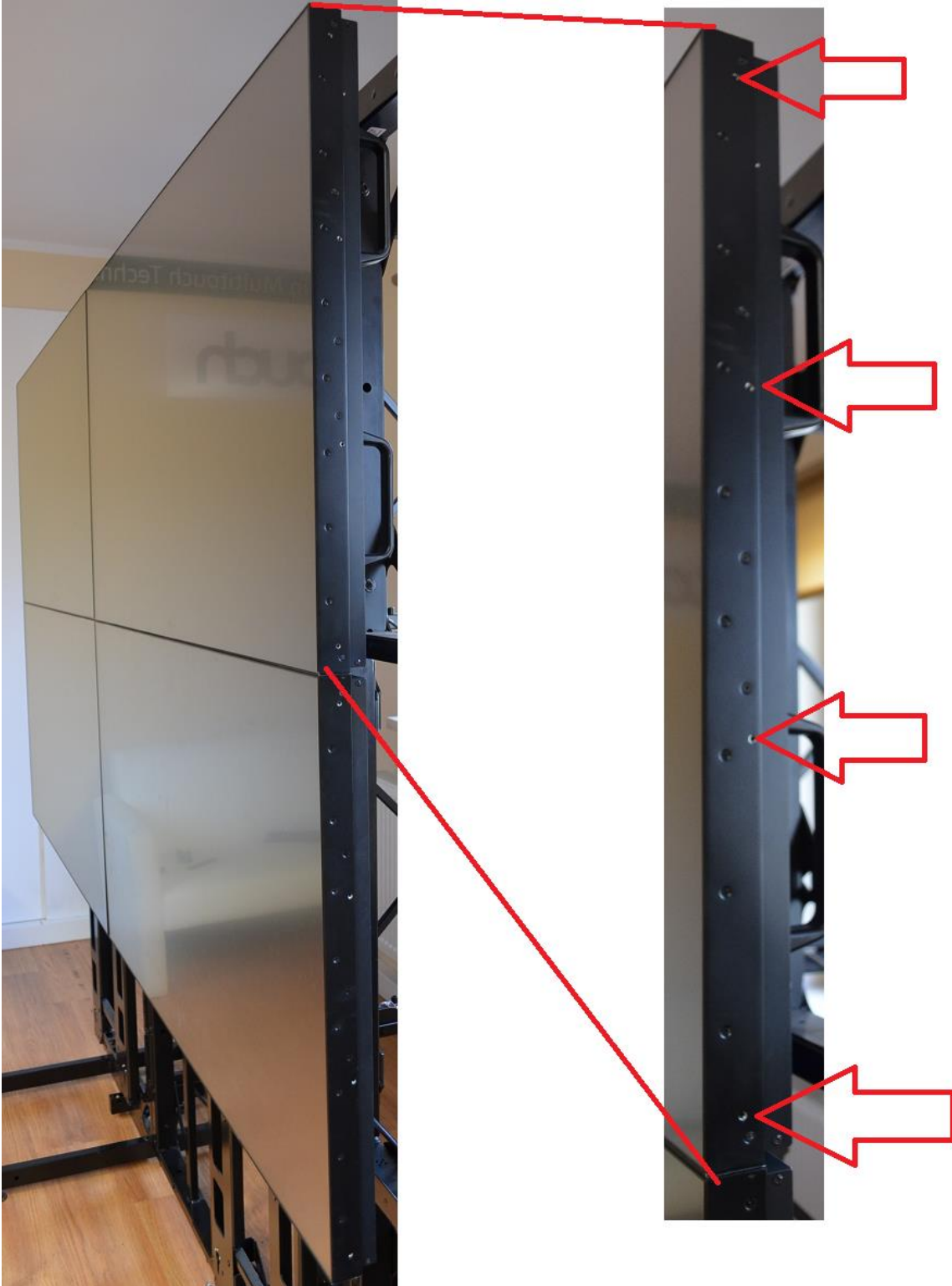
3. Steps how to install Z-Brackets on video wall

This manual show's how to install Z-Brackets on sample video wall built of four displays in configuration 2 x 2. However there is no limitation in length and height of Z- Bracket's system.

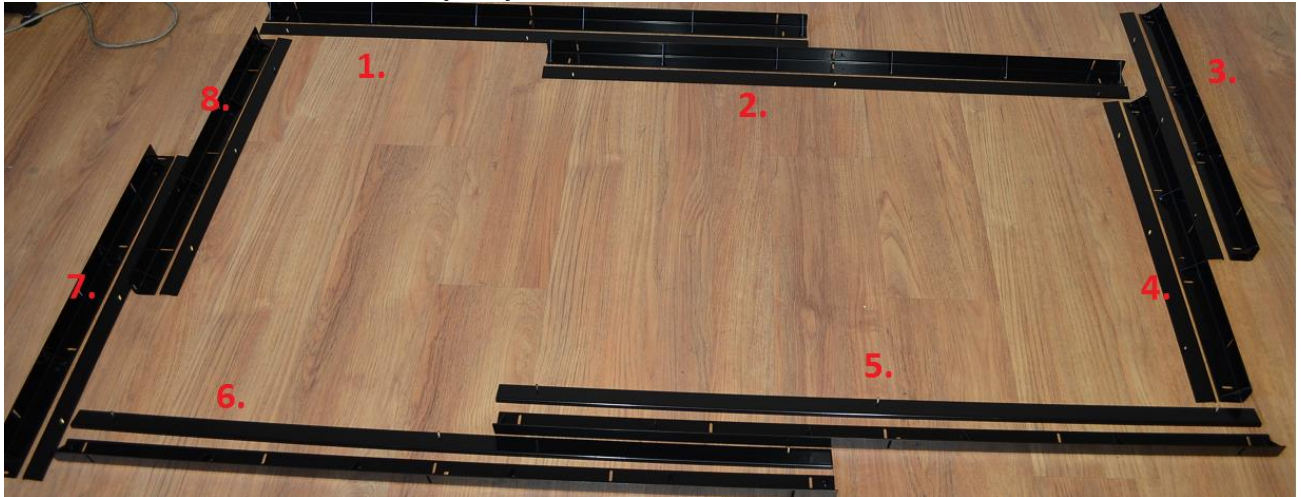
- Sample 2 x 2 video wall:



- Side view with four installation holes

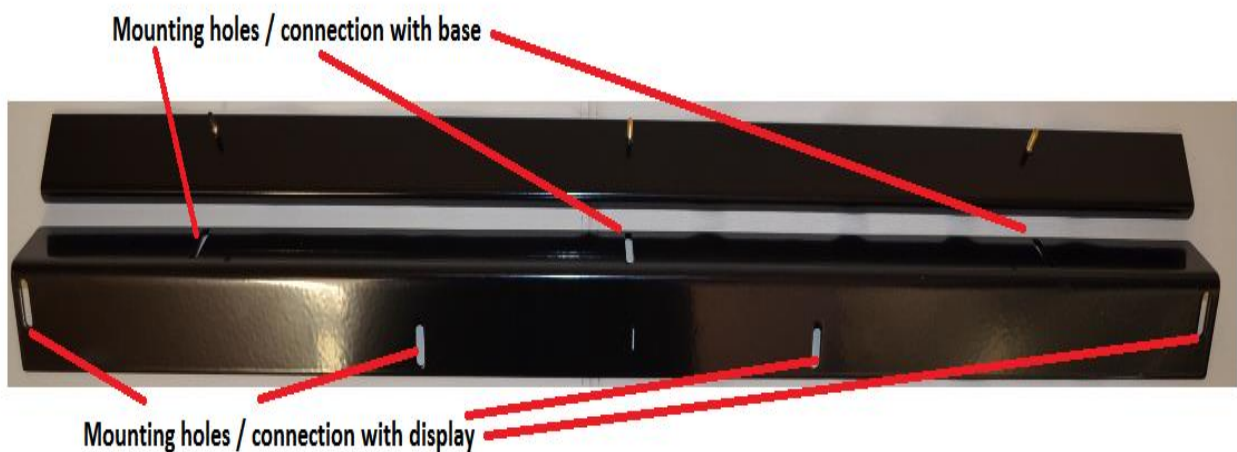


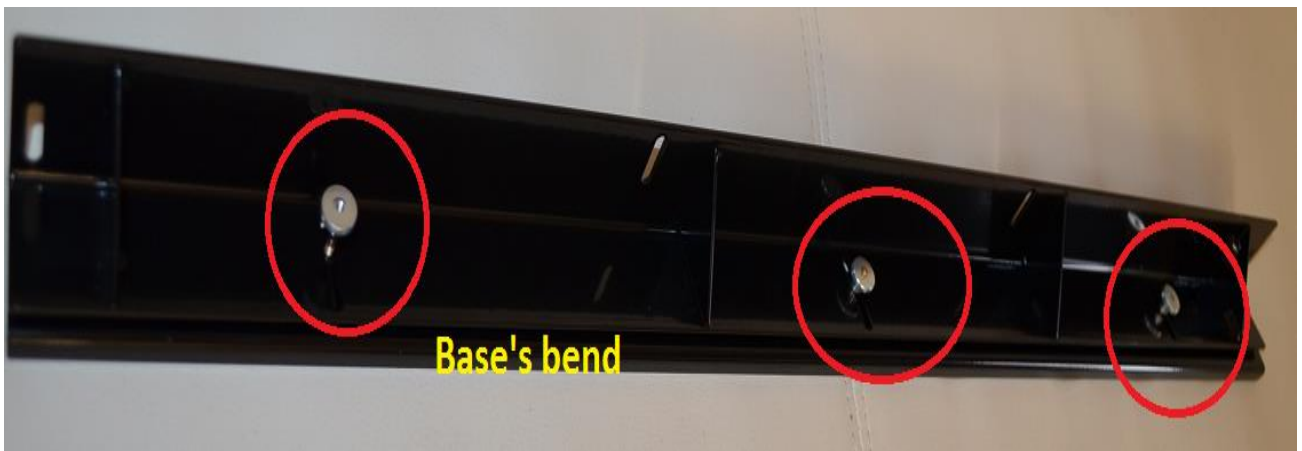
- Set of Z-Brackets prepared for installation



- 1,2 – Top brackets + L-shaped bases
- 3,4 – Right brackets + L-shaped bases
- 5,6 – Bottom brackets + L-shaped bases
- 7,8 – Left brackets + L-shaped bases

- Assembling bracket with it's L-shaped base





- Short and long brackets with L-shaped bases



-



Use four hand-driven screws for short brackets and five for long ones

- Mount Z-Brackets using all available mounting holes

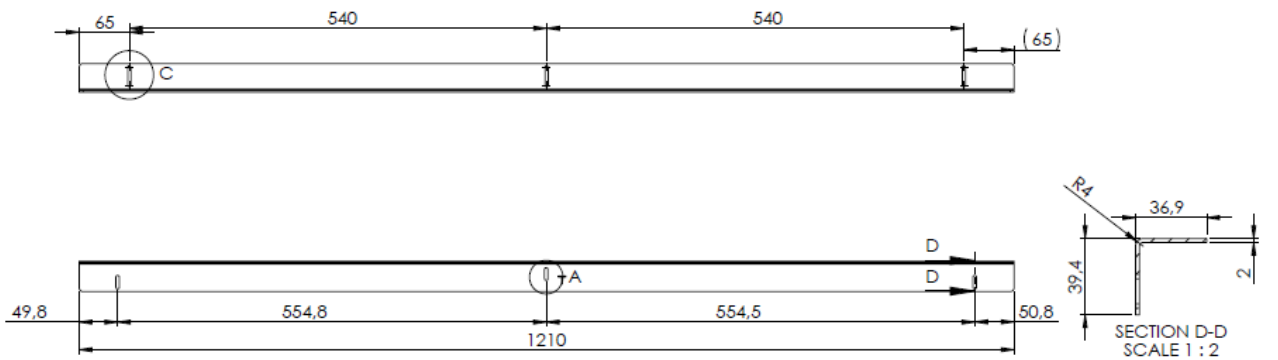


- 1,2 – Top brackets + L-shaped bases
- 3,4 – Right brackets + L-shaped bases
- 5,6 – Bottom brackets + L-shaped bases
- 7,8 – Left brackets + L-shaped bases

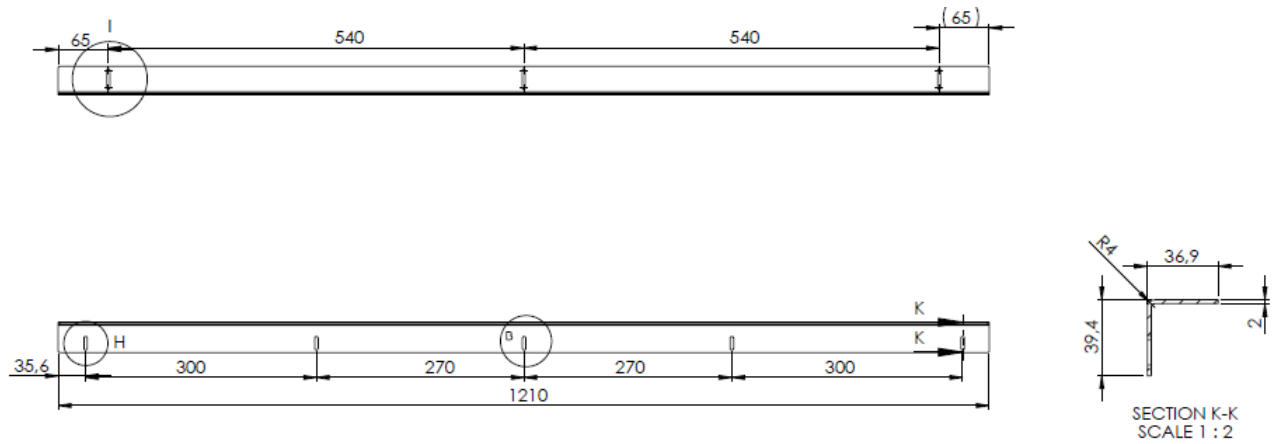
- Construction is ready for touch frame installation

4. Technical overview

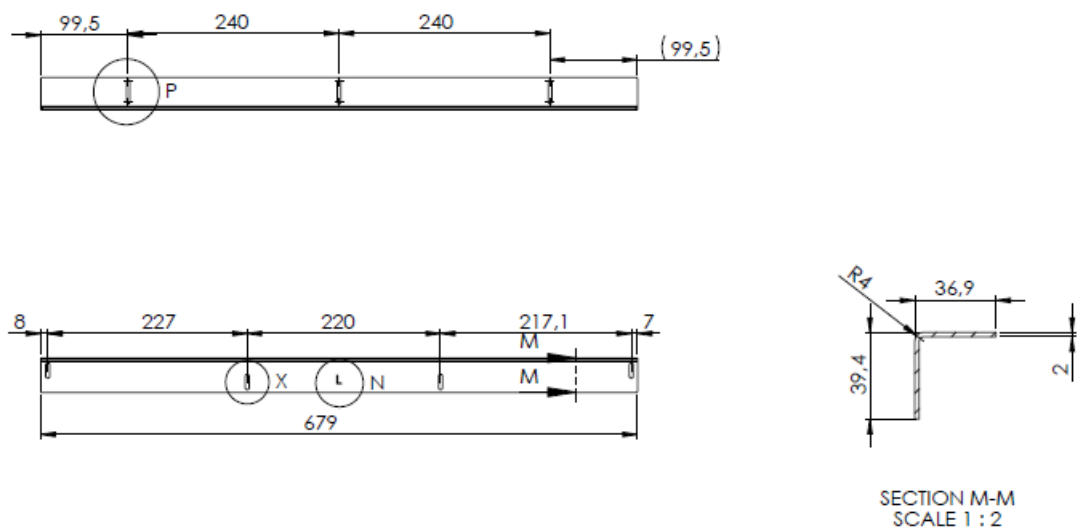
- Top bracket



- Bottom bracket



- Left bracket



- Right bracket

