

NEC Display Solutions

NEC Modular Touch System

Bring your video wall to life



NEC Modular Touch System

Bring your video wall to life

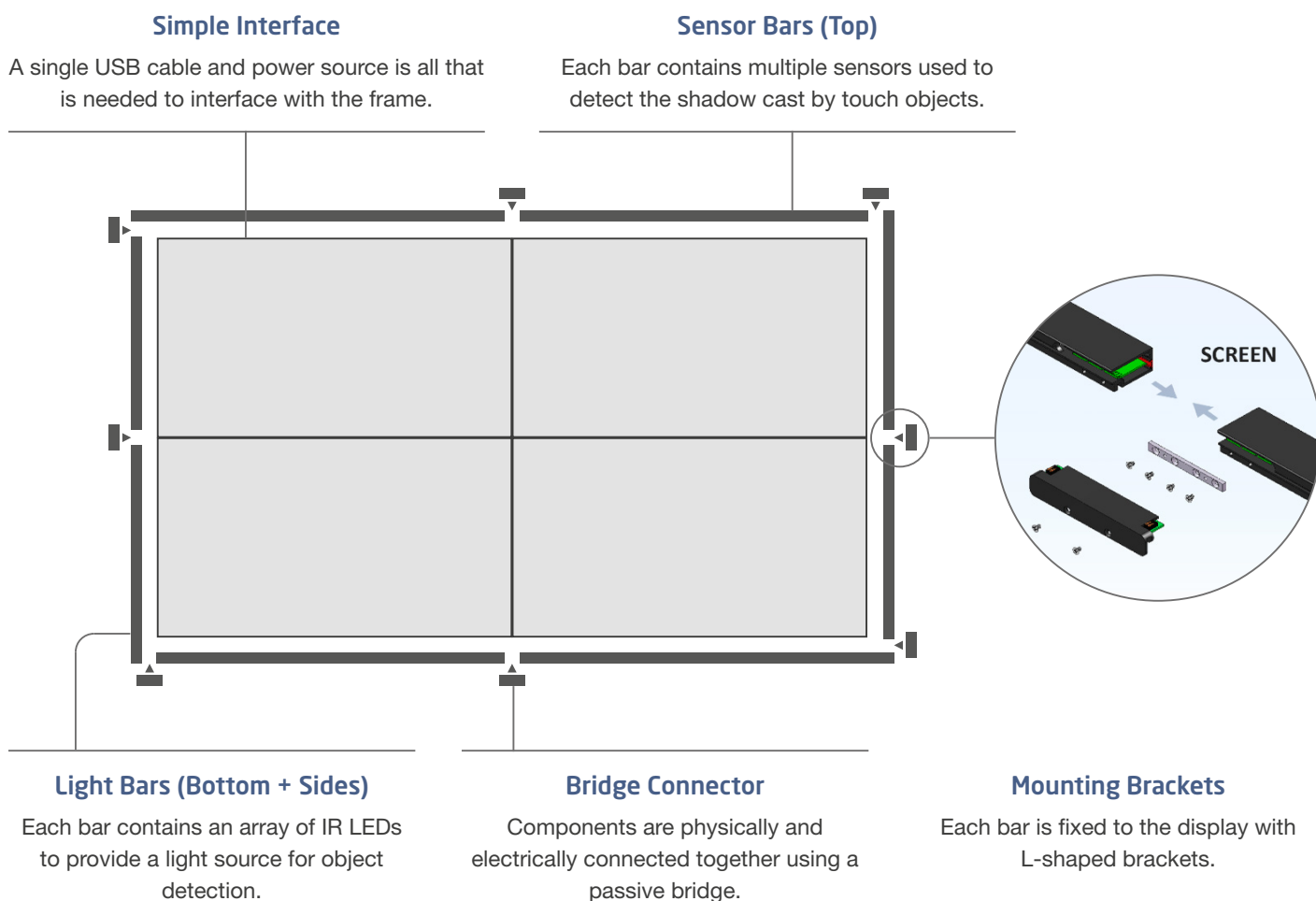
Interactivity and collaboration inspires your audience and attracts a crowd – whatever the application, NEC’s Modular Touch System brings interactivity to video wall solutions and invites multiple users to engage, share and have fun.

The NEC Modular Touch System with its modular multi-touch frames allows scalable video walls in landscape and portrait orientation of any size. The solution is based on ShadowSense™ touch over-frame kits and NEC’s 55” ultra-narrow large format MultiSync® X555UNS PG video wall displays with integrated protective glass.

Target applications include command & control rooms, broadcast studios, exhibitions, corporate lobbies, retail stores, booths at stadiums and events. The NEC Modular Touch System makes it easy and cost effective to add a whole new dimension to your video wall.

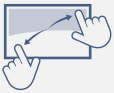
Concept

The touch frame is separate from the glass so each piece can be removed and replaced without affecting the rest of the system.





Key Benefits



Impressive Touch Experience

Highest accuracy and real multi-touch experience based on ShadowSense touch technology; filter out accidental and ghost touches even in high ambient light operation.



Profit from the Modular Design

Create stylish interactive video wall designs of any size and orientation. Each single video wall display contains its own protective glass, making logistics simple without the need for managing a huge single overlay protective panel.



Cut down on Installation and Service Costs

Just one tool is required to easily assemble the NEC Modular Touch System on-site, and being modular in design, servicing is simple.



Gain from High Reliability

Designed for 24/7 operation based on NEC ultra-narrow protective glass displays, the NEC Modular Touch System is robust and built to resist the risks of heavy public use and potential vandalism.



No driver required

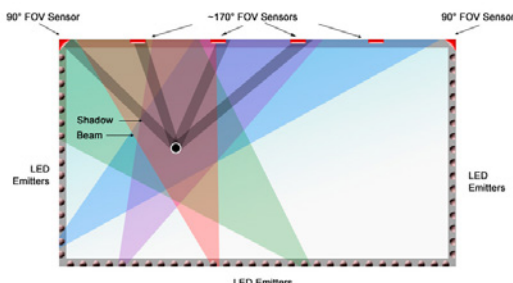
Compatible with all major operating systems, ShadowSense touch does not require installation of a driver.

ShadowSense Touch Technology for Captivating Interactive Experience

Outstanding new Multi-Touch Performance

ShadowSense touch technology is an innovative and patented optical position sensing technology. The best analogy for ShadowSense technology lies in the 6,000 year old sundial. The shadows of a touch point cast by multiple light sources (light bars) and multiple sensors (sensor bars) allow an extremely accurate touch calculation.

- **High Ambient Light Immunity**, even in direct sunlight or environments that are extremely bright.
- **Ability to Sense Size of Object**, accepts touch inputs even with gloved fingers, fingernails, pens, keys, credit cards, styluses, erasers etc., regardless of whether the object is a conductor of electricity.
- **Failure Immunity**, ShadowSense still works even if parts of one sensor bar are blocked.



Dashboard Configuration Tool

Unleash the Power of ShadowSense Touch Technology

The innovative Dashboard application provides users with the ability to easily adjust the performance and touch characteristics of the NEC Modular Touch System touchscreen behaviour.

- **Touch Rejection**, sensing the size of an object gives ShadowSense control over what is recognised as a valid touch, versus an unintentional touch. Using Dashboard, precise definitions of a valid touch size (min and max) can be programmed.
- **Shadow Density**, ShadowSense differs from all other technologies in that it senses not only the size of the object but also the transparency. Dashboard is used to adjust shadow densities to tune out objects based on transparency, like water versus fingers.
- **Pen and Eraser Detection**, ShadowSense can recognise the difference between a stylus, finger or eraser without having to make monotonous menu selections. The size of the pen and eraser can be set and adjusted within Dashboard so that any sized pen and eraser can be used.
- **Hardware Monitoring**, provides immediate feedback of sensor and LED functionality of the ShadowSense bars for quick and easy troubleshooting, as well as remote monitoring.

NEC Modular Touch System

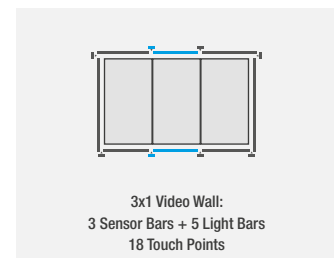
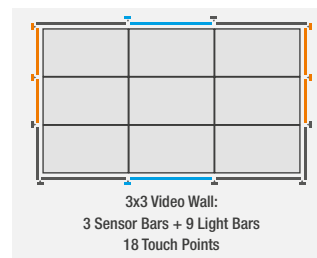
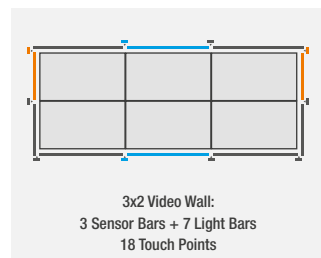
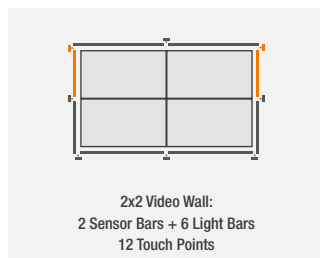
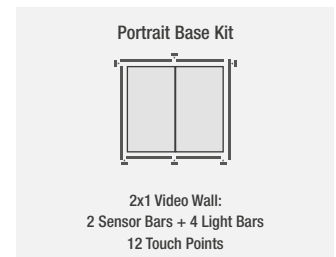
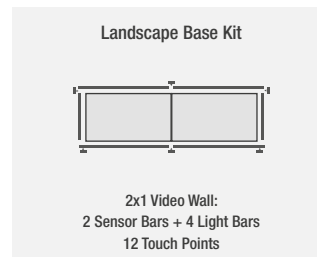
Bring your video wall to life

Configuration Examples

The NEC Modular Touch System allows any size to be assembled around a variety of monitor combinations.

The number of available touch points depends on the number of installed sensor bars: Each sensor bar provides six simultaneous touch points.

- Base Kit
- Horizontal Extension Kits
- Vertical Extension Kits



Order Codes

Size	Display Orientation	Kit	Order Code
55"	Landscape	Base: MTS-55L-BASE	40001021
		Horizontal Extension: MTS-55L-HORZ	40001020
		Vertical Extension: MTS-55L-VERT	40001019
	Portrait	Base: MTS-55P-BASE	40001024
		Horizontal Extension: MTS-55P-HORZ	40001018
		Vertical Extension: MTS-55P-VERT	40001017

Video Wall Displays with integrated protective glass

- 2 mm toughened glass protects the panel
- Anti-glare coating ensures smooth touch surface

Size	Display	Order Code
55"	NEC MultiSync X555UNS PG	60004141



This document is © Copyright 2018 NEC Display Solutions Europe GmbH. All rights are reserved in favour of their respective owners. The document, or parts thereof, should not be copied, adapted, redistributed, or otherwise used without the prior written permission of NEC Display Solutions Europe GmbH. This document is provided "as is" without warranty of any kind whatsoever, either express or implied. Errors and omissions are excepted.

NEC Display Solutions Europe GmbH may make changes, revisions or improvements in, or discontinue the supply of any product described or referenced in this document at any time without notice.

NEC Display Solutions Europe GmbH – HQ
 Landshuter Allee 12-14
 80637 München, Germany
 Phone: +49 (0) 89 99 699-0
 Fax: +49 (0) 89 99 699-500
 infomail@nec-displays.com
 www.nec-display-solutions.com