

Sophos Central Firewall

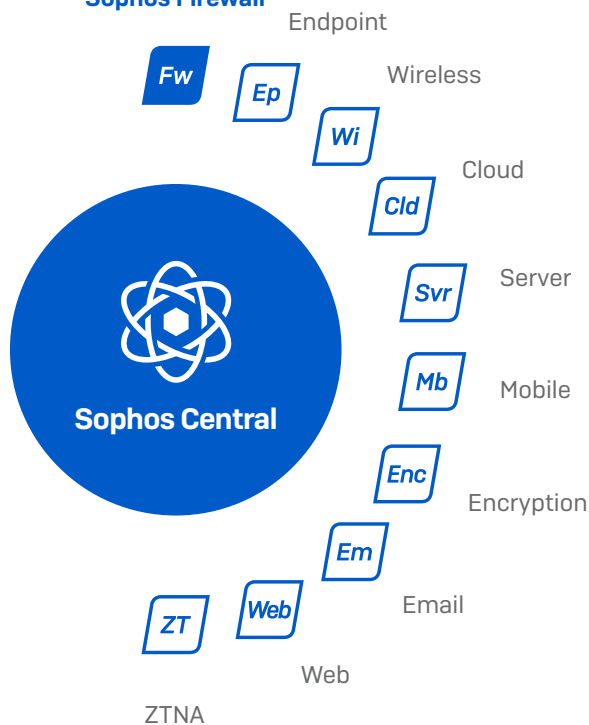
Sophos Central Firewall Management and Reporting

Sophos Central is the ultimate cloud management and reporting ecosystem for your Sophos Firewall estate. Whether you are managing a single firewall or hundreds, Sophos Central makes it easy – and free. Take advantage of zero-touch deployment, group firewall management, and flexible reporting tools - all at no extra charge.

The ultimate security ecosystem

Sophos Central is your gateway to all your Sophos products, enabling you to have the best protection at every point. You also get integrated and synchronized information sharing and threat response, all managed from a single easy-to-use cloud console that delivers unmatched visibility and insight.

Sophos Firewall

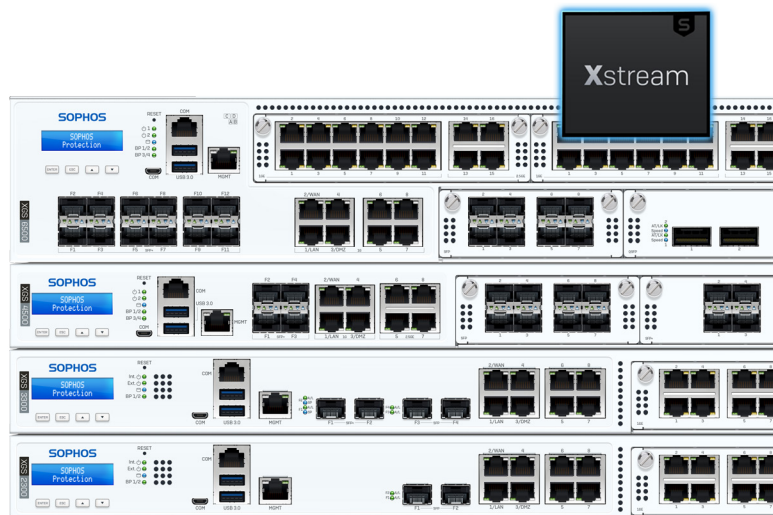


Synchronized Security

Sophos Central is your one and only console for managing Sophos Synchronized Security. You can manage and deploy Sophos Intercept X to your endpoints, servers, and mobile devices, while also deploying Sophos Firewalls, SD-WAN devices, or ZTNA to protect your networks and applications. Then, put your cybersecurity on autopilot and use Sophos Central to monitor and manage everything from a single pane of glass.

Group firewall management

If you're managing multiple firewalls, keeping them consistent, synchronized, and up to date can be a big challenge. Sophos Central makes it simple. Powerful group management options enable you to easily group firewalls together to keep their group policy synchronized. Simply make a change to the group policy once, and it will be automatically synchronized across all firewalls in the group, helping ensure your network is consistent and compliant.



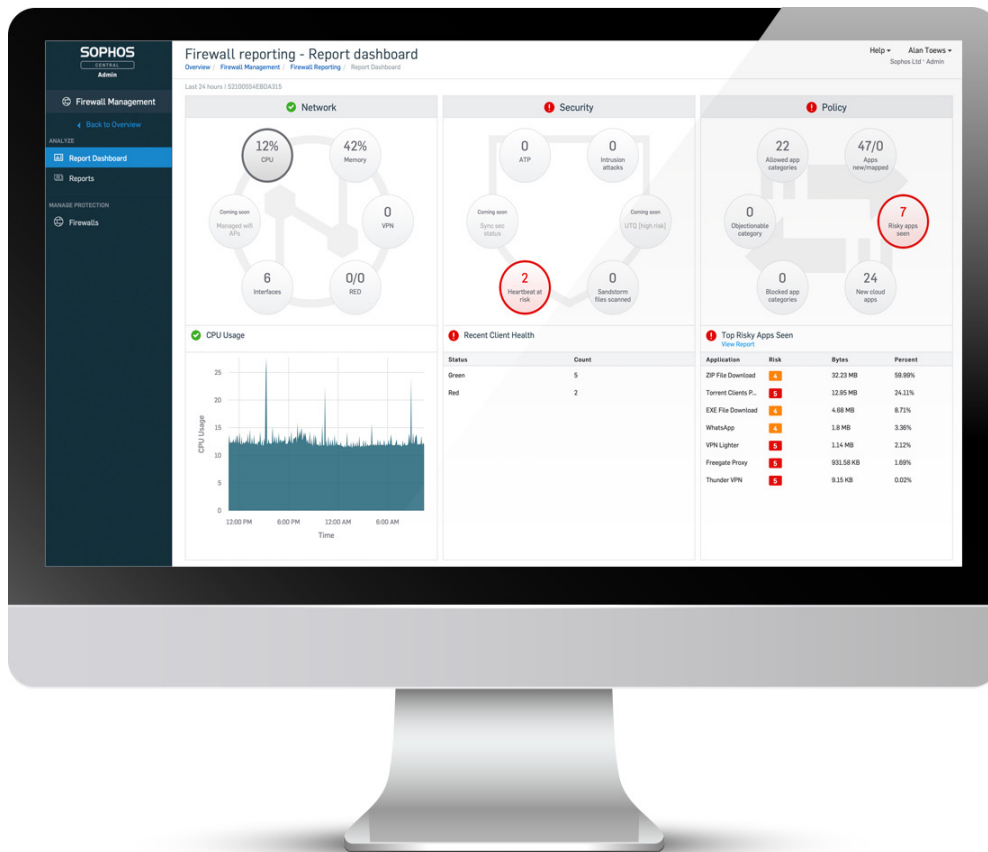
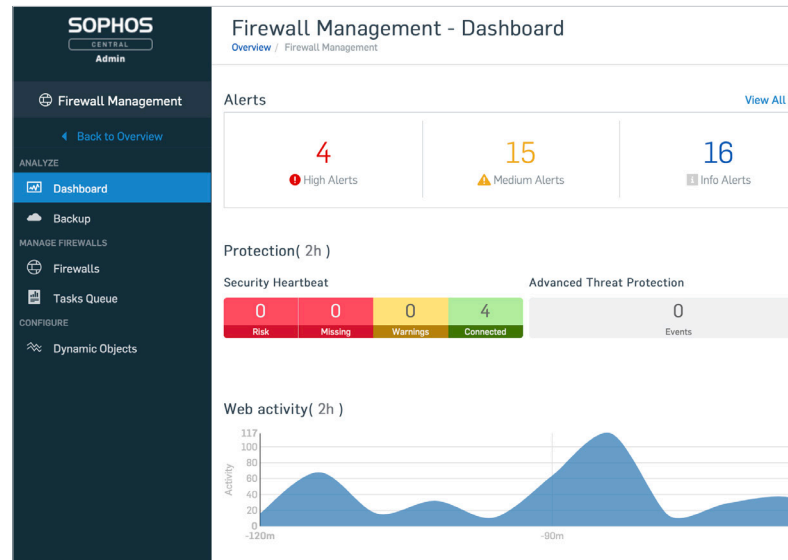
Sophos Central Firewall

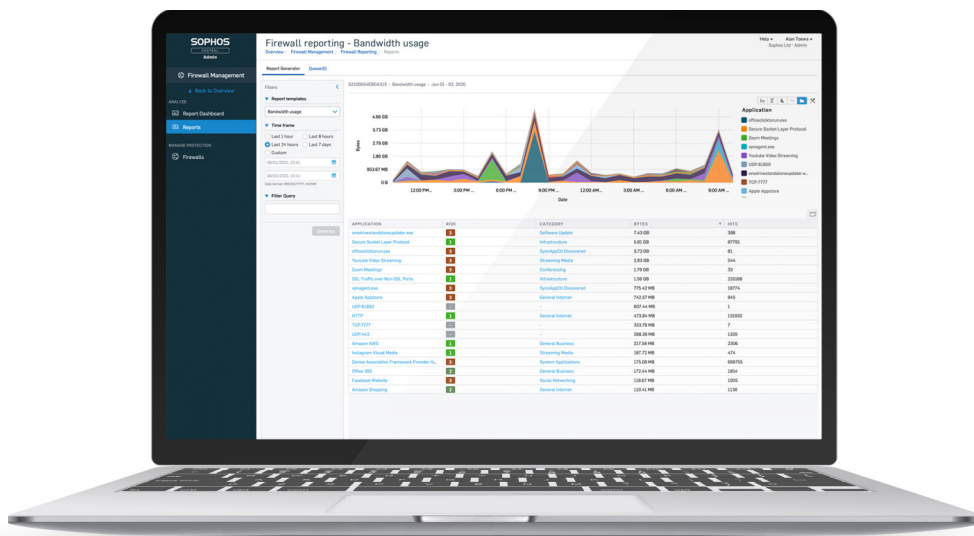
Network monitoring

Sophos Central enables you to stay completely informed with convenient at-a-glance dashboard insights into all your firewalls, their status, and their utilization. You will also know instantly about any active threats and security alerts and you can monitor your SD-WAN VPN and SD-RED device status, as well as any compliance risks.

SD-WAN VPN Orchestration

Makes interconnecting VPN tunnels between multiple Sophos Firewalls a quick and easy task. With just a few clicks you can setup a full mesh network, hub-and-spoke topology, or something in-between, and Sophos Central will automatically configure all the necessary tunnel and firewall access rules to enable your SD-WAN overlay network.





Multi-Firewall Reporting

Central Firewall Reporting (CFR) provides you with a powerful set of tools to capture and analyze network activity from your Sophos Firewall estate. Log data from all your firewalls is sent to your Sophos Central account in the cloud, where you can get clear picture of your network activity in one place - without - having to access each device individually. Report across your entire estate, a specific group, or drill down into a specific firewall with ease.

Pre-defined and custom reports

Start with any of the convenient predefined reports and build your own story by changing the data fields, visualization options, and filters. Customize each report and create hundreds of variations from any report to visualize the data and trends for your specific use case, then export the data or schedule the reports to be sent to stakeholders on a regular basis.

Network intelligence through analytics

Gather network intelligence by drilling deep down into your firewall syslog data for a granular view presented in an intuitive and visual way. The data can then be analyzed for trends that identify security gaps, suspicious user behavior, or other events requiring policy changes.

Log backup and management

Sophos Central Firewall Reporting logs data from your Sophos Firewalls with smart indexing and easy search capabilities for fast retrieval, audits, and forensics. Built-in filters enable you to pivot from a report directly into the log data for a more detailed look at what's behind the data in the report view.

Help with compliance

Group firewall policy synchronization, the task queue, and detailed reporting help you keep up with regulatory and internal compliance requirements. In the event of a compliance audit, you can report on network events at any point in time.

Central backup and firmware updates

You can use Sophos Central to store your firewall configuration backups in the cloud for convenient access should you ever need them. Your last five backup files are automatically maintained, as well as one you can "pin" as a favorite. Sophos Central also makes scheduling firmware updates a simple operation so you can keep your network optimized with the latest features, performance, and security patches without disruption.

Enable XDR and Managed Threat Response

Sophos MTR provides optional 24/7 threat hunting, detection and response delivered by an expert team as a fully-managed service. Sophos XDR offers extended detection and response managed by your own team. Regardless of whether you manage it yourself, or Sophos manages it for you, your Sophos Firewall is ready to share the necessary threat intelligence and data to the cloud.

Zero-touch deployment

Sophos Central enables you to deploy new firewall devices without having to touch them. You can perform the initial setup and configuration in Sophos Central and then export the configuration. Someone on-site starts the new Sophos Firewall device with the configuration loaded on a flash drive connecting the firewall to Sophos Central, where you can then finish the configuration remotely.

How to buy Sophos Central Firewall Management and Reporting Features

SOPHOS CENTRAL FEATURES	INCLUDED AT NO CHARGE	XSTREAM PROTECTION BUNDLE (CENTRAL ORCHESTRATION SUBSCRIPTION)
Central Firewall Management		
Firewall Group Management	Yes	Yes
Scheduled Firmware Updates	Yes	Yes
Backup Management	Yes	Yes
Zero-Touch Deployment	Yes	Yes
SD-WAN VPN Orchestration		Yes
Central Firewall Reporting		
Cloud Data Retention	7 Days	30 Days – Up to 1 Year*
Individual firewall reports	Yes	Yes
Multi-firewall reporting		Yes
Custom report templates		Yes
Scheduled reports		Yes
Export reports		Yes
XDR/MTR		
XDR/MTR Connector		Yes

*Add Central Firewall Reporting Advanced to extend the data retention period up to 1 year – see the [storage estimation tool](#)

Features list and technical specifications

Supported Firewalls

- Sophos Central Management and Reporting features require SFOS v18 (unless noted below)
- Scheduled Firmware Updates requires SFOS v18 MR3 or later
- SD-WAN VPN Orchestration requires SFOS v18.5 MR1 or later

Firewall Management

- Group firewalls to keep group policy and setting synchronized
- Central SD-WAN VPN Orchestration
- High-Availability (HA) support
- Backup file management
- Firmware updates from Sophos Central
- Schedule Firmware updates for any date/time
- Zero-touch deployment using a USB flash drive
- Task queue tracks all firewall group synchronization activity for monitoring and auditing changes

Log View and Search

- Search and retrieve logs against archived logs administration
- Web-based management console
- Report dashboard for quick at-a-glance view of health
- Reports accessible from any location using a standard web browser

Firewall Reporting

- Extensive built-in report modules with customization tools
- Report across individual firewalls, multiple firewalls, groups, or all firewalls (CFR Advanced only)
- Save, export or schedule reports (CFR Advanced only)
- Standard reports: bandwidth usage, application usage, web usage, firewall, ATP, geo-activity, IPS, sandboxing events, and more
- Multi-format reports: tabular, graphical
- Custom and special reports with granular search options
- XDR/MTR Connector to integrate Sophos Firewall with Sophos XDR and Managed Threat Response Service

Try it now for free

Register for a free 30-day evaluation at sophos.com/firewall

United Kingdom and Worldwide Sales
Tel: +44 (0)8447 671131
Email: sales@sophos.com

North American Sales
Toll Free: 1-866-866-2802
Email: nasales@sophos.com

Australia and New Zealand Sales
Tel: +61 2 9409 9100
Email: sales@sophos.com.au

Asia Sales
Tel: +65 62244168
Email: salesasia@sophos.com