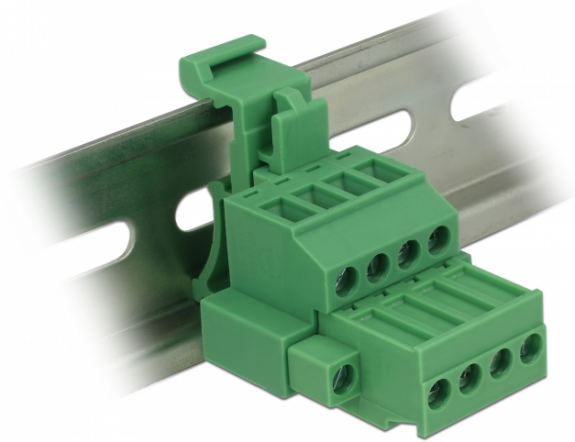


Delock Terminal block set for DIN rail 4 pin with screw lock

Description

This terminal block set by Delock is suitable for the mounting on a DIN rail. Thus data or power cables can be connected via the terminal block.



Specification

- Connectors:
Terminal block:
1 x 4 pin terminal block male
1 x 4 pin terminal block
Connection terminal:
1 x 4 pin terminal block female
1 x 4 pin terminal block
- Pitch: 5.08 mm
- Environmental temperature: -40 °C ~ 105 °C
- Useable for a cable gauge range from 24 to 12 AWG
- DIN rail mounting: 35 mm
- Material: plastic
- Colour: green
- Dimensions (LxWxH): ca. 42.50 x 34.90 x 31.40 mm

Item no. 65936

EAN: 4043619659364
Country of origin: China
Package: Poly bag



Package content

- Terminal block
- DIN rail clip
- Connection terminal

Images



| General | |
|-------------------------------|---------------------------------|
| Suitable for conductor gauge: | 24 - 12 AWG |
| Mounting type: | DIN rail 35 mm |
| Interface | |
| Connector 1: | 1 x 4 pin terminal block male |
| Connector 2: | 1 x 4 pin terminal block |
| connector 3: | 1 x 4 pin terminal block female |
| connector 4: | 1 x 4 pin terminal block |
| Technical characteristics | |
| Storage temperature: | -40 °C ~ 105 °C |
| Physical characteristics | |
| Pitch distance: | 5.08 mm |
| Housing material: | Plastic |
| Length: | 42.50 mm |
| Width: | 34.90 mm |
| Height: | 21.40 mm |
| Colour: | green |