

# Gearlab<sup>®</sup>

## **Thunderbolt 4** USB4 Hybrid Dock

User Manual

# Table of Contents

SAFETY INSTRUCTIONS .....	1
WARRANTY.....	1
TRADEMARKS .....	1
REGULATORY COMPLIANCE .....	2
FCC CONDITIONS .....	2
CE .....	2
WEEE INFORMATION .....	2
INTRODUCTION.....	3
FEATURES.....	4
PACKAGE CONTENTS .....	4
SYSTEM REQUIREMENTS .....	4
PRODUCT OVERVIEW.....	5
CONNECTION .....	7
DISPLAY CONFIGURATION .....	8
MULTI-MONITOR CONFIGURATION .....	8
EXTEND MODE.....	9
MIRROR MODE.....	10
SET THE PRIMARY MONITOR.....	11
AUDIO CONFIGURATION .....	12
SPECIFICATION.....	14

Before attempting to connect, operate or adjust this product, please save and read the User's Manual completely. The style of the product shown in this User's Manual may be different from the actual unit due to various models.

## Safety Instructions

Always read the safety instructions carefully:

- ◆ Keep this User's Manual for future reference
- ◆ Keep this equipment away from humidity
- ◆ If any of the following situation arises, get the equipment checked by a service technician:
  - The equipment has been exposed to moisture.
  - The equipment has been dropped and damaged.
  - The equipment has obvious sign of breakage.
  - The equipment has not been working well or cannot get it to work according to the User's Manual.

### Warranty

This product is covered by a 2 year warranty, please contact your dealer in case of defects.

Please take care and dispose of this product correctly according to national and local WEEE legislation.

Please note that all names, models and trademarks are the sole property of their respective owners. Gearlab is a registered trademark of EET Group A/S.

Device composition, specifications and illustration shown on the packaging is for informative purposes only and may differ from the actual product.

Imported into the EU by EET Group A/S  
Tempovej 41, 2750 Ballerup, Denmark

Designed in Denmark  
Made in China



# Regulatory Compliance

## FCC Conditions

This equipment has been tested and found to comply with Part 15 Class B of the FCC Rules. Operation is subject to the following two conditions: (1) This device may not cause harmful interference. (2) This device must accept any interference received and include interference that may cause undesired operation.

## CE

This equipment is in compliance with the requirements of the following regulations: EN 55032/EN 55024: CLASS B

## WEEE Information

For EU (European Union) member users: According to the WEEE (Waste electrical and electronic equipment) Directive, do not dispose of this product as household waste or commercial waste. Waste electrical and electronic equipment should be appropriately collected and recycled as required by practices established for your country. For information on recycling of this product, please contact your local authorities, your household waste disposal service or the shop where you purchased the product.



# Introduction

The Thunderbolt 4 / USB4 Hybrid Dock is a pro-level docking station designed for demanding high-productivity workflow needs based on the Intel Thunderbolt 4 Goshen Ridge controller.

It is not only for Thunderbolt 4 users, this versatile dock is backwards compatible with Thunderbolt 3, USB4 - USB 2.0 and VESA Alternate mode (MFDP), and works with both Windows and Mac systems.

The dock provides full charging solution for your laptop with PD3.0 up to 96W. The Thunderbolt4/USB4 downstream ports can connect Thunderbolt and USB-C peripherals with optimal performance of lightening-fast transfer speed and high resolution video output, you can also enjoy single display up to 8K@30Hz via HDMI 2.1 and 2.5GbE Ethernet port, the features outfitted for creative professionals and gamers to handle any challenges they encounter in a production workflow.

The dock also offers legacy interfaces such as USB-A 3.1 10G ports with BC 1.2 / Apple Charge, SD 4.0 card reader and Hi-RES headset Audio for maximum connectivity.

# Features

- Thunderbolt 4 technology
- Downstream port
  - Thunderbolt 4 / USB4 x 2
  - HDMI 2.1 x 1 up to 8K30
  - USB-A 3.1 10G x 4 with BC 1.2 (5V/1.5A) and Apple Charge 2.1A x 1
- Upstream PD charging:
  - Supports 5 /9 /15 / 20V@4.8A
  - Up to 96W
- RJ45 2.5 Gigabit Ethernet
- Supports SD 4.0 card reader
- Hi-RES Headset jack

# Package Contents

◆ Thunderbolt 4 / USB4 Hybrid Dock	x1
◆ Thunderbolt Cable	x1
◆ Power Adapter	x1
◆ User Manual	x1

# System Requirements

- ◆ Supported Operating Systems
  - Windows® 10
  - Mac OS Big Sur 11.2 or later

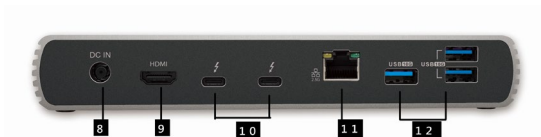
# Product Overview

## Front



Item	Description
<b>1. SD 4.0 card reader</b>	Copy data, photos, songs, videos and movies from SD card with high speed transmission
<b>2. USB-A Gen2 10G</b>	Supports BC 1.2 (5V / 1.5A) and Apple Charge 2.1A
<b>3. Combo Audio Jack</b>	Connect to a headset
<b>4. Thunderbolt 4</b>	Thunderbolt 4 with PD 3.0 charging to laptop
<b>5. Power Indicator</b>	Indicator shows green when power on
<b>6. Thunderbolt 4 link indicator</b>	Indicator shows blue when Thunderbolt embedded device is connected
<b>7. Power button</b>	Power on /off

## Rear

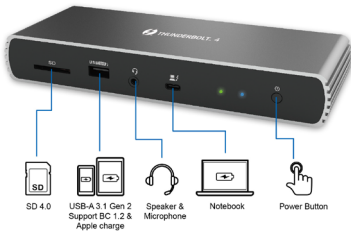
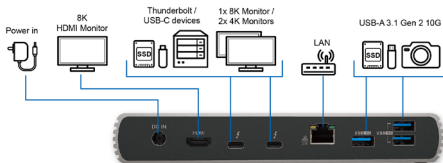


Item		Description
8.	Power Jack	Connect to power adapter
9.	HDMI 2.1	Connect to HDMI cable
10.	Thunderbolt 4/USB 4 port	Connect to Thunderbolt /USB device
11.	RJ45 port	Connect to Ethernet
12.	USB-A Gen2 10G	Connect to USB devices



# Connection

Follow the illustrations below to connect the corresponding connectors.



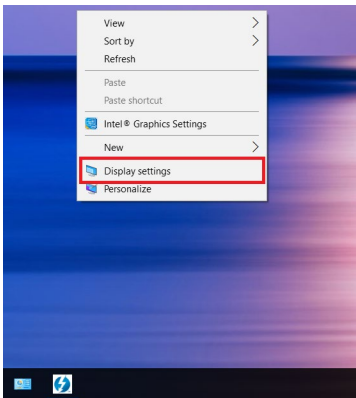
# Display Configuration

## Multi-monitor configuration

Once the extra monitors are connected, they can be configured to either **Mirror mode**, **Extended mode** or set the **primary display**.

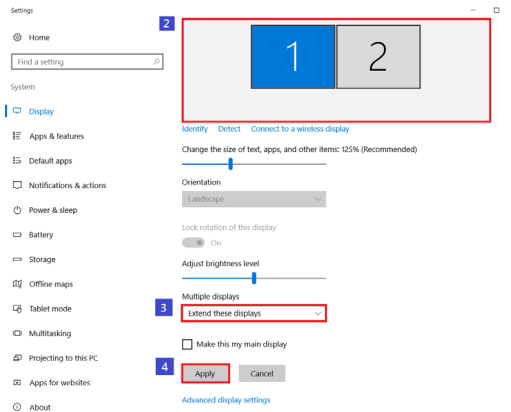
## Windows® OS

Position the mouse anywhere on the **Windows Desktop**, Right-click and select **Display Settings**.



## Extended mode

1. Refer to the **Multi-monitor configuration** section to bring up the configuration window.
2. Select the preferred monitor at top of the page.
3. Select **Multiple Displays > Extend these displays**.
4. Click **Apply** to confirm and exit.



5. Once the setting is completed, simply drag and drop the application icons or the opened windows to the add-on monitor. However, some applications may not support to display on the extended desktop.

## Troubleshooting

- a. Cursor disappeared

If the status remains in the extended mode but the docking station is disconnected, the desktop will still be panned to the add-on monitor.

The cursor may not be found on the primary monitor in such a case. If it happens, connect the add-on monitor through the docking station again or keep moving the mouse.

- b. Video playback in extended mode

If the video or DVD playback quality is poor or low performance in extended mode, please playback it on the primary monitor instead of the add-on monitor.

## Mirror mode

1. Refer to the **Multi-monitor configuration** section to bring up the configuration window.
2. Select the preferred monitor at top of the page.
3. Select **Multiple Displays > Duplicate these displays**.
4. Click **Apply** to confirm and exit.

## Set the primary monitor

1. Refer to the **Multi-monitor configuration** section to bring up the configuration window.
2. Select the preferred monitor at top of the page.
3. Check the box of **Make this my main display**.



**NOTE:** For some computers, you may need to disable the main display by unchecking the box of **Extend the desktop onto this monitor** or **Extend my Windows desktop onto this monitor**.

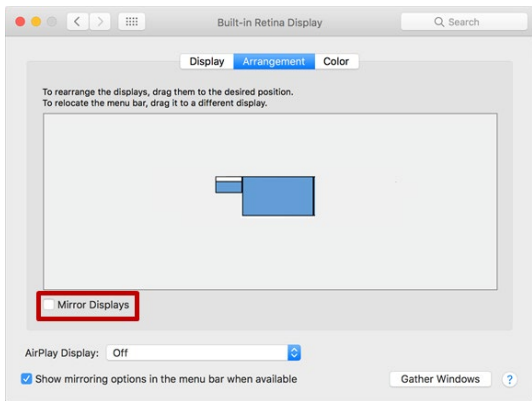
4. Click **Apply** to confirm and exit.

# Mac OS®

1. Click on the **Apple** sign at the top left corner of the screen and select **System Preferences.../ Displays**.
2. To rearrange the displays, drag them to the desired position.

To relocate the menu bar, drag it to a different display.

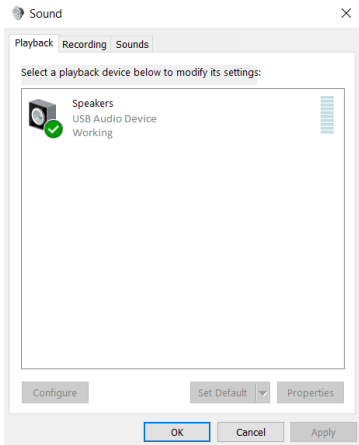
To switch to **Mirror Mode**, tick the box in front of **Mirror Displays**.



# Audio Configuration

By default, when the docking station is connected to a computer, the audio configuration may be changed to **USB (Multimedia) Audio Device** automatically (this setting depends on models). If it does not work, follow the steps below to setup.

1. Open **Control Panel** and then select the hardware and sound icon.
2. Click **Sound > Manage audio devices** and then select **USB Audio Device**.



# Specification

User Interface	Upstream	Thunderbolt/USB-C port supports up to PD 96W
	Downstream	Thunderbolt 4/USB 4 x2 USB-A 3.1 Gen 2 x3 USB-A 3.1 Gen 2 x1, with BC1.2 (5V/1.5A) and Apple Charge 2.1A
Video Output	Type	HDMI 2.1 x1 Up to 8K@30Hz
Ethernet	Type	RJ45 Gigabit Ethernet x1 supports MAC Address pass through 10/100/1000/2500Mbps
Card Reader	Type	SD 4.0 x1
Audio		Hi-RES Headset jack x1
Power	Power Mode	Self-powered
	Power Adapter	Input: AC 100-240V Output: DC 20V/6.75A
Working Environment	Operation Temperature	0~35 degree
	Storage Temperature	-20~70 degree
Compliance		CE, FCC, VCCI, RCM