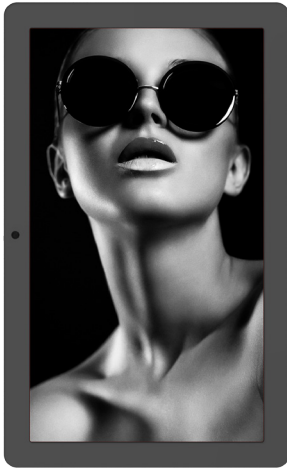




AOPEN

Bright Ideas Connected

eTILE

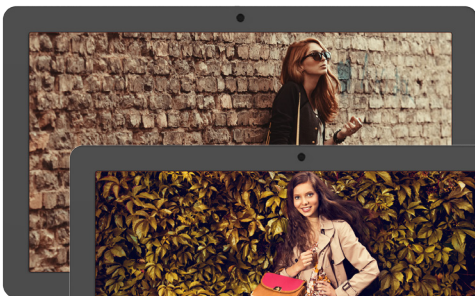


All-in-one Interactive Touch Device **eTILE 15M-FW**

The eTILE 15M is an ultra-thin interactive all-in-one touch display, specially designed for commercial use in for example retail environments. With good integration possibilities because of its exterior, fanless interior and tamperproof design this eTILE can be integrated into any commercial setting.

A tamper proof commercial Full HD solution:

- + New generation AHVA Panel
- + Bright display (400 nits)
- + Robust PCT Panel; dust and waterproof (IP65)
- + Purposely built for 24/7 use in kiosk environments
- + Supports Intel® Broadwell U CPU
- + Tamper resistant because of cable management, hidden keypad and port cover
- + Handles high operation vibrations for use in harsh environments



eTILE 15M-FW



Model name		WT15M-FW
Feature		An ultra-thin, tamper proof interactive all-in-one touch display
Dimension	W x H x D (mm)	390.5 x 240 x 36.45(mm)
	W x H x D (inch)	15.37 x 9.45 x 1.44(inch)
Weight (Kg/Pound)		3.7 kg / 8.16 lbs (N.W.)
SoC	Type	Intel® Broadwell CPU i3-5010U
Memory	Channels	Dual Channel
	Type	DDR3L 2GB x 2
	DDR	1333
	Max Memory	8G
Graphics	Embedded	Intel® HD Graphics 5500
Audio	Type	Max 7.1 Channel via HDMI Digital Analog 2 channels I/O
LAN	Single Intel Gigabit Ethernet WG1218LM	
	10/100/1000 Mbps	
Mass Storage		Default 32GB mSATA SSD
Touch Panel		PCT Multi Touch Surface (10 point touch) Pencil Hardness = 7H per ASTM D3363 Pen Hitting: more than 20,000,000 times (loading 180g)
Speaker		Built-in 2W Stereo Speakers
Webcam		Built-in HD Webcam

Panel Specs	Resolution	15.6" (1920 x 1080; 16:9)
	Brightness	400 nits
	Panel Type	AHVA
	View Angle	Horizontal: 178/178 Vertical: 178/178
Side Panel I/O	Audio Line-Out	x 1
	DC Jack	x 1
	Mic/line in	x 1
	HDMI Out Port	x 1
	USB 3.0 Port	x 4
	RJ45 LAN Port	x 1
	RJ50 Port	x 4
	Antenna Hole	x 2
Adapter		90W (19V, 4.74A) AC Adapter
Watchdog Timer		1 sec~255 sec
IP Grade		Front panel IP65 dust- & waterproof
Security		Hidden Keypad Secure cable and port cover Concealed on/off controls
Accessories		Wall Mount Kit, internal Wifi Antenna, Powercord. Other accessories available on request
Environment		
Operating Temperature		0 ~ 40°C (32 ~ 104°F)
MTBF		50,000 hours
Storage Conditions		-20 ~ 60°C (-4~140°F) 90% RH (40°C non condensing)
Vibrations	Operating Vibration	1Grms, random, 10~500Hz, X, Y, Z, 3Axes, 0.5Hr/Axis
	Operating Shock	8G, half sine, 11ms duration, 3Axes, 6Direction

Supports:



AOPEN

Bright Ideas Connected

The specifications depicted may be subject to change without prior notice.
All trademarks are copyright of their respective owners. © AOPEN Inc.