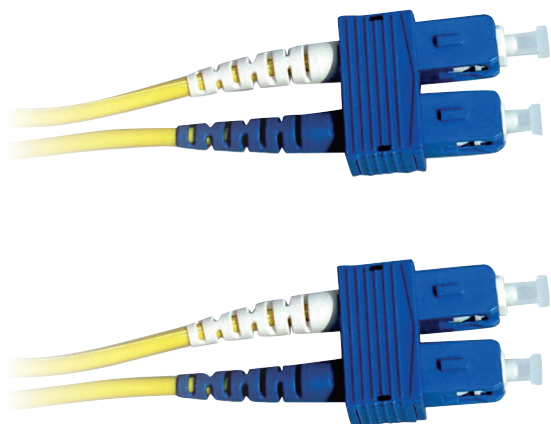


# SC-SC Singlemode fibre cable duplex 1m OS2 9/125 LSZH



## PRODUCT OVERVIEW

Designed for Data Centers, Industry and Computer Centers. Single mode fiber optic cable is suitable for enterprise network, Telecom rooms, server farms, cloud storage networks and any place where fiber jumper cables are needed.

This cable is ideal for connecting 1G/10G/40G/100G Ethernet connections. It can transport data for up to 10km at 1310nm, or up to 40km at 1550nm. The single mode patch cords are manufactured using LSZH cables which conform to IEC, EIA TIA or Telcordia standards.

## SPECIFICATIONS

<b>Interface</b>	SC-SC
<b>Standard</b>	OS2
<b>Fibre size</b>	9/125 $\mu$ m
<b>Type</b>	Duplex
<b>Jacket size</b>	2 mm
<b>Length</b>	2 m
<b>Color</b>	Yellow

LENGTH	PART NO.
1.0 m	LVO231377
2.0 m	LVO231386
3.0 m	LVO231378
5.0 m	LVO231379
10.0 m	LVO231380

