

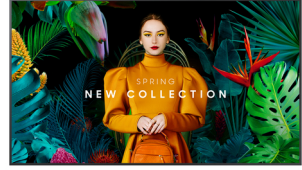
## Samsung QH43C Digitaalinen litteä infotaulu 109,2 cm (43") LCD Wi-Fi 700 cd/m<sup>2</sup> 4K Ultra HD musta Sisäänrakennettu prosessori Tizen 24/7

**Tuotemerkki :** Samsung

**Tuoteperhe:** QHC

**Tuotekoodi:**  
LH43QHCEBGCXEN

**Tuotteen nimi :** QH43C



Samsung QH43C. Tuotteen muotoilu: Digitaalinen litteä infotaulu. Näytön halkaisija: 109,2 cm (43"), Näytön teknologia: LCD, Näytön erottelutarkkuus: 3840 x 2160 pikseliä, Näytön kirkkaus: 700 cd/m<sup>2</sup>, HD-tyyppi: 4K Ultra HD. Wi-Fi. Toiminta-aika (tunteja/päiviä): 24/7. Käyttöjärjestelmä asennettu: Tizen. Tuotteen väri: musta

Display		Design	
Panel type	VA	Bezel colour	Charcoal Black
Display diagonal *	109.2 cm (43")	Mounting type	Wall
Display technology *	LCD	<b>Performance</b>	
Display resolution *	3840 x 2160 pixels	Purpose *	Universal
Display brightness *	700 cd/m <sup>2</sup>	Operating hours (hours/days)	24/7
HD type *	4K Ultra HD	HDCP	✓
Touchscreen *	✗	HDCP version	2.2
Native aspect ratio	16:9	<b>Power</b>	
Response time	8 ms	Power consumption (typical) *	132 W
Contrast ratio (typical)	4000:1	Power consumption (sleep)	0.5 W
Dynamic contrast ratio marketing name	Mega Contrast	Energy efficiency class (SDR)	G
Viewing angle, horizontal	178°	Energy consumption (SDR) per 1000 hours	84 kWh
Viewing angle, vertical	178°	AC input voltage	100 - 240 V
Pixel pitch	0.245 x 0.245 mm	AC input frequency	50/60 Hz
Display diagonal (metric)	108 cm	Energy efficiency scale	A to G
Horizontal scan range	30 - 81 kHz	<b>Computer system</b>	
Vertical scan range	48 - 75 Hz	Computer system *	✓
Haze rate	25%	Computer system type	System on Chip (SoC)
Pixel frequency (max)	594 MHz	Built-in processor *	✓
Colour gamut	72%	Operating system installed	Tizen
<b>Ports &amp; interfaces</b>		Operating system version	7.0
HDMI ports quantity *	3	<b>Weight &amp; dimensions</b>	
HDMI version	2.0	Display width	969.5 mm
HDMI input ports quantity	3	Display depth	28.5 mm
DVI port *	✗	Display height	557.8 mm
DisplayPorts quantity *	1	Display weight	9.3 kg
DisplayPorts in	1	<b>Packaging data</b>	
DisplayPort version	1.2	Package width	1093 mm
USB port *	✓	Package depth	126 mm
USB ports quantity	2	Package height	667 mm
Ethernet LAN *	✓	Package weight	11.8 kg
Ethernet LAN (RJ-45) ports	1		
Wi-Fi *	✓		
RS-232 interface	✓		

Ports & interfaces		Operational conditions	
Infrared data port	✓	Operating temperature (T-T)	0 - 40 °C
Remote (IR) input	1	Operating relative humidity (H-H)	10 - 80%
Design		Certificates	
Product design *	Digital signage flat panel	Certification	Class B 60950-1, 62368-1
Placement supported *	Indoor	Technical details	
Product colour *	Black	Audio out (mini jack)	1
Screen shape	Flat	Other features	
VESA mounting *	✓	Bluetooth	✓
Panel mounting interface	200 x 200 mm	Flash memory	16000 MB
Bezel width (bottom)	1.15 cm	RS-232 input ports	1
Bezel width (side)	1.15 cm	RS-232 output ports	1
Bezel width (top)	1.15 cm	RJ-45 input ports	1
		Optional features	WMN-B50SC STN-L4355C



8806094977967

Disclaimer. The information published here (the "Information") is based on sources that can be considered reliable, typically the manufacturer, but this Information is provided "AS IS" and without guarantee of correctness or completeness. The Information is only indicative and can be changed at any time without notification. No rights can be based on the Information. Suppliers or aggregators of this Information do not accept any liability with regard to the content of (web)pages and other documents, including its Information. The publisher of the Information can not be held liable for the content of 3rd party websites that are linking this Information or are linked to from this Information. You as the User of the Information are solely responsible for the choice and usage of this Information. You are not entitled to transfer, copy or otherwise multiply or distribute the Information. You are obliged to follow the directions of the copyright owner(s) with regard to the use of the Information. Exclusively Dutch law is applicable. With regard to price and stock data on the site, the publisher followed a number of starting points, which are not necessarily relevant for your private or business circumstances. Therefore, the price and stock data are only indicative and are subject to changes. You are personally responsible for the way you use and apply this information. As a user of the Information or sites or documents in which this Information is included, you will adhere to standard fair use including avoidance of spamming, ripping, intellectual-property violations, privacy violations, and any other illegal activity.

Publication date: 19-DEC-2024. Prints or copies of Information are only valid on the printed Publication date