

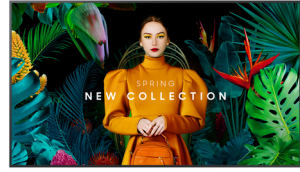
## Samsung QH55C Digitaalinen litteä infotaulu 139,7 cm (55") LCD Wi-Fi 700 cd/m<sup>2</sup> 4K Ultra HD musta Sisäänrakennettu prosessori Tizen 24/7

**Tuotemerkki :** Samsung

**Tuoteperhe:** QHC

**Tuotekoodi:**  
LH55QHCEBGCXEN

**Tuotteen nimi :** QH55C



Samsung QH55C. Tuotteen muotoilu: Digitaalinen litteä infotaulu. Näytön halkaisija: 139,7 cm (55"), Näytön teknologia: LCD, Näytön erottelutarkkuus: 3840 x 2160 pikseliä, Näytön kirkkaus: 700 cd/m<sup>2</sup>, HD-tyyppi: 4K Ultra HD. Wi-Fi. Toiminta-aika (tunteja/päiviä): 24/7. Käyttöjärjestelmä asennettu: Tizen. Tuotteen väri: musta

Display		Design	
Panel type	VA	Bezel colour	Charcoal Black
Display diagonal *	139.7 cm (55")	<b>Performance</b>	
Display technology *	LCD	Purpose *	Universal
Display resolution *	3840 x 2160 pixels	Operating hours (hours/days)	24/7
Display brightness *	700 cd/m <sup>2</sup>	HDCP	✓
HD type *	4K Ultra HD	HDCP version	2.2
Touchscreen *	✗	<b>Power</b>	
Response time	8 ms	Power consumption (typical) *	187 W
Contrast ratio (typical)	4000:1	Power consumption (sleep)	0.5 W
Dynamic contrast ratio marketing name	Mega Contrast	Energy efficiency class (SDR)	G
Viewing angle, horizontal	178°	Energy consumption (SDR) per 1000 hours	109 kWh
Viewing angle, vertical	178°	AC input voltage	100 - 240 V
Pixel pitch	0.315 x 0.315 mm	AC input frequency	50/60 Hz
Display diagonal (metric)	138 cm	Energy efficiency scale	A to G
Horizontal scan range	30 - 81 kHz	<b>Computer system</b>	
Vertical scan range	48 - 75 Hz	Computer system *	✓
Haze rate	25%	Computer system type	System on Chip (SoC)
Pixel frequency (max)	594 MHz	Built-in processor *	✓
RGB colour space	NTSC	Operating system installed	Tizen
Colour gamut	72%	Operating system version	7.0
<b>Ports &amp; interfaces</b>		<b>Weight &amp; dimensions</b>	
HDMI ports quantity *	3	Display width	1237.9 mm
HDMI version	2.0	Display depth	28.5 mm
HDMI input ports quantity	3	Display height	708.8 mm
DVI port *	✗	Display weight	16.9 kg
DisplayPorts quantity *	1	<b>Packaging data</b>	
DisplayPorts in	1	Package width	1403 mm
DisplayPort version	1.2	Package depth	148 mm
USB port *	✓	Package height	835 mm
USB ports quantity	2	Package weight	21.1 kg
Ethernet LAN *	✓	<b>Operational conditions</b>	
Ethernet LAN (RJ-45) ports	1	Operating temperature (T-T)	0 - 40 °C
Wi-Fi *	✓		
RS-232 interface	✓		

Ports & interfaces		Operational conditions	
Infrared data port	✓	Operating relative humidity (H-H)	10 - 80%
Remote (IR) input	1	<b>Certificates</b>	
<b>Design</b>		Certification	Class B 60950-1, 62368-1
Product design *	Digital signage flat panel	<b>Technical details</b>	
Placement supported *	Indoor	Audio out (mini jack)	1
Product colour *	Black	<b>Other features</b>	
Screen shape	Flat	Bluetooth	✓
VESA mounting *	✓	Flash memory	16000 MB
Panel mounting interface	200 x 200 mm	RS-232 input ports	1
Bezel width (bottom)	1.15 cm	RS-232 output ports	1
Bezel width (side)	1.15 cm	RJ-45 input ports	1
Bezel width (top)	1.15 cm	Optional features	WMN-B50SC STN-L4355C



8806094977981

Disclaimer. The information published here (the "Information") is based on sources that can be considered reliable, typically the manufacturer, but this Information is provided "AS IS" and without guarantee of correctness or completeness. The Information is only indicative and can be changed at any time without notification. No rights can be based on the Information. Suppliers or aggregators of this Information do not accept any liability with regard to the content of (web)pages and other documents, including its Information. The publisher of the Information can not be held liable for the content of 3rd party websites that are linking this Information or are linked to from this Information. You as the User of the Information are solely responsible for the choice and usage of this Information. You are not entitled to transfer, copy or otherwise multiply or distribute the Information. You are obliged to follow the directions of the copyright owner(s) with regard to the use of the Information. Exclusively Dutch law is applicable. With regard to price and stock data on the site, the publisher followed a number of starting points, which are not necessarily relevant for your private or business circumstances. Therefore, the price and stock data are only indicative and are subject to changes. You are personally responsible for the way you use and apply this information. As a user of the Information or sites or documents in which this Information is included, you will adhere to standard fair use including avoidance of spamming, ripping, intellectual-property violations, privacy violations, and any other illegal activity.

Publication date: 19-DEC-2024. Prints or copies of Information are only valid on the printed Publication date