

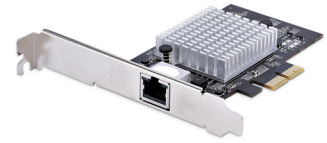
## StarTech.com ST10GSPEXNB2 verkkokortti Sisäinen Ethernet 10000 Mbit/s

**Tuotemerkki :** StarTech.com

**Tuotekoodi:** ST10GSPEXNB2

**Tuotteen nimi :** ST10GSPEXNB2

StarTech.com ST10GSPEXNB2. Sisäinen. Yhteysteknologia: Langallinen, Isäntäkoneen käyttöliittymä: PCIe, Käyttöliittymä: Ethernet. Tiedonsiirron enimmäisnopeus: 10000 Mbit/s. Tuotteen väri: musta



Ports & interfaces		System requirements	
Connectivity technology *	Wired	Windows operating systems supported	Windows 10, Windows 10 Education, Windows 10 Education x64, Windows 10 Enterprise, Windows 10 Enterprise x64, Windows 10 Home, Windows 10 Home x64, Windows 10 IOT Core, Windows 10 IoT Enterprise, Windows 10 Pro, Windows 10 Pro x64, Windows 10 x64, Windows 11, Windows 11 x64, Windows 8, Windows 8 Enterprise, Windows 8 Enterprise x64, Windows 8 Pro, Windows 8 Pro x64, Windows 8 x64
Host interface *	PCIe	Linux operating systems supported	✓
Interface *	Ethernet	<b>Operational conditions</b>	
Ethernet LAN (RJ-45) ports	1	Operating temperature (T-T)	0 - 60 °C
PCI version	3.0	Storage temperature (T-T)	-10 - 70 °C
PCI Card form factor	Full-height (low-profile)	<b>Weight &amp; dimensions</b>	
<b>Network</b>		Width	107 mm
Maximum data transfer rate *	10000 Mbit/s	Depth	121 mm
Networking standards *	IEEE 1588, IEEE 802.1Q, IEEE 802.3ab, IEEE 802.3an, IEEE 802.3az, IEEE 802.3bz, IEEE 802.3i, IEEE 802.3u	Height	22 mm
	Ethernet LAN	Weight	70 g
Ethernet interface type	2.5 Gigabit Ethernet, 5 Gigabit Ethernet, 10 Gigabit Ethernet, Fast Ethernet, Gigabit Ethernet	<b>Packaging data</b>	
Ethernet LAN data rates	10,100,1000,2500,5000,10000 Mbit/s	Package width	210 mm
Cabling technology	10GBase-T	Package depth	145 mm
Auto MDIX IEEE	✓	Package height	35 mm
Full duplex	✓	Package weight	120 g
Jumbo frames support	✓	<b>Packaging content</b>	
Jumbo frames	16000	Mounting brackets included	✓
<b>Design</b>		Quick installation guide	✓
Component for *	PC		
Product colour	Black		
Internal *	✓		
LED indicators	✓		

**Logistics data**

Master (outer) case width	445 mm
Master (outer) case length	375 mm
Master (outer) case height	320 mm
Products per master (outer) case	40 pc(s)



0065030897549



065030897549

Disclaimer. The information published here (the "Information") is based on sources that can be considered reliable, typically the manufacturer, but this Information is provided "AS IS" and without guarantee of correctness or completeness. The Information is only indicative and can be changed at any time without notification. No rights can be based on the Information. Suppliers or aggregators of this Information do not accept any liability with regard to the content of (web)pages and other documents, including its Information. The publisher of the Information can not be held liable for the content of 3rd party websites that are linking this Information or are linked to from this Information. You as the User of the Information are solely responsible for the choice and usage of this Information. You are not entitled to transfer, copy or otherwise multiply or distribute the Information. You are obliged to follow the directions of the copyright owner(s) with regard to the use of the Information. Exclusively Dutch law is applicable. With regard to price and stock data on the site, the publisher followed a number of starting points, which are not necessarily relevant for your private or business circumstances. Therefore, the price and stock data are only indicative and are subject to changes. You are personally responsible for the way you use and apply this information. As a user of the Information or sites or documents in which this Information is included, you will adhere to standard fair use including avoidance of spamming, ripping, intellectual-property violations, privacy violations, and any other illegal activity.