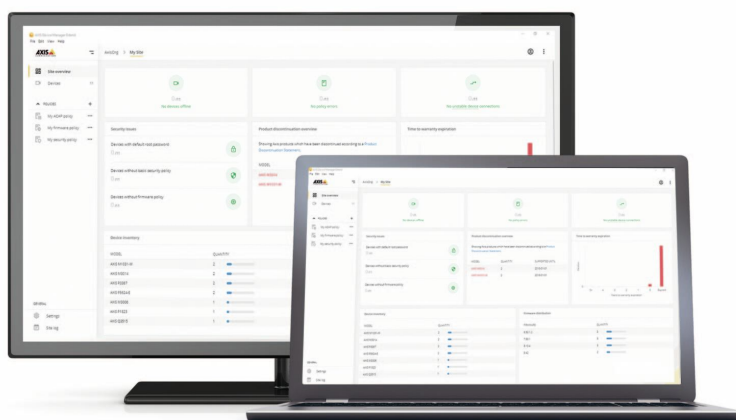


# AXIS Device Manager Extend

Stay aware and in control. Everywhere.

AXIS Device Manager Extend is a software solution that provides a unified, user-friendly interface helping you proactively manage Axis devices on your organization's networks. It's ideally suited for multisite environments and device lifecycle management. Featuring an intuitive dashboard and remote access, you can maintain thousands of Axis devices and perform bulk firmware upgrades and other tasks at scale. It's an invaluable tool for troubleshooting and proactive planning, helping you save time and money. AXIS Device Manager Extend lets users gain awareness and ensure cyber-security control of all Axis devices on all sites through the entire device lifecycle.

- > **Remotely manage your Axis devices on all sites**
- > **Verify firmware versions and push out upgrades in minutes**
- > **Easy troubleshooting through a dashboard view of device status**
- > **View warranty and product discontinuation information**
- > **Proactively plan technology refresh and product replacements**



# AXIS Device Manager Extend

System features	
<b>Supported devices</b>	<b>Supported products:</b> Axis camera products: Q-line: series 1xxx - 8xxx P-line: series 1xxx - 8xxx M line: series 1xxx - 8xxx F Line: series 1xxx - 4xxx FA Line: series FA5xxx C line: series 1xxx - 8xxx D line: series 1xxx - 4xxx A line: series 8xxx only
<b>Device management</b>	Discover devices Add devices to sites Health monitoring Upgrade firmware Manage apps (AXIS Camera Application Platform) Access devices interface with one click Export device inventory report View site logs
<b>Warranty</b>	Monitor device warranties
<b>Administration</b>	Manage organizations Invite users Remove users Manage user roles
<b>Security</b>	System changes logged Basic security policy
<b>Scalability</b>	Suitable for managing several thousands of Axis devices. AXIS Device Manager Extend can connect to multiple systems.
<b>Languages</b>	English, French, Italian, German, Spanish
System requirements	
<b>Software</b>	Firmware 6.50 or later For a list of all supported operating systems, see the release notes available at <a href="http://axis.com/techsup">axis.com/techsup</a>
<b>Minimum requirements</b>	<b>AXIS Device Manager Extend client:</b> Windows 10 Enterprise/Pro, Win Server 2016/2019 x86-64 Processor (Intel / AMD x64 Processors) 2GB RAM 100Mbps Wired Ethernet 1GB free storage <b>Site controller:</b> Windows 10 Enterprise/Pro, Win Server 2016/2019 x86-64 Processor (Intel / AMD x64 Processors) 2GB RAM 100Mbps Wired Ethernet 1GB free storage <b>ADM Extend and site controller:</b> Windows 10 Enterprise/Pro, Win Server 2016/2019 4GB RAM 100Mbps Wired Ethernet 2GB free storage
Environmental responsibility: <a href="http://axis.com/environmental-responsibility">axis.com/environmental-responsibility</a>	