

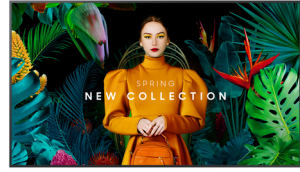
Samsung QB75C Digitaalinen litteä infotaulu 190,5 cm (75") LCD Wi-Fi 350 cd/m² 4K Ultra HD musta Sisäänrakennettu prosessori Tizen 16/7

Tuotemerkki : Samsung

Tuoteperhe: QBC

Tuotekoodi:
LH75QBCEBGCXEN

Tuotteen nimi : QB75C



Samsung QB75C. Tuotteen muotoilu: Digitaalinen litteä infotaulu. Näytön halkaisija: 190,5 cm (75"), Näytön teknologia: LCD, Näytön erottelutarkkuus: 3840 x 2160 pikseliä, Näytön kirkkaus: 350 cd/m², HD-tyyppi: 4K Ultra HD. Wi-Fi. Toiminta-aika (tunteja/päiviä): 16/7. Käyttöjärjestelmä asennettu: Tizen. Tuotteen väri: musta

Display		Performance	
Panel type	VA	Purpose *	Universal
Display diagonal *	190.5 cm (75")	Operating hours (hours/days)	16/7
Display technology *	LCD	HDCP	✓
Display resolution *	3840 x 2160 pixels	HDCP version	2.2
Display brightness *	350 cd/m ²	Power	
HD type *	4K Ultra HD	Power consumption (typical) *	214.5 W
Touchscreen *	✗	Power consumption (sleep)	0.5 W
Response time	8 ms	AC input voltage	100-240 V
Contrast ratio (typical)	4000:1	AC input frequency	50-60 Hz
Dynamic contrast ratio marketing name	Mega Contrast	Energy efficiency scale	A to G
Viewing angle, horizontal	178°	Computer system	
Viewing angle, vertical	178°	Computer system *	✓
Pixel pitch	0.429 x 0.429 mm	Computer system type	System on Chip (SoC)
Horizontal scan range	30 - 81 kHz	Built-in processor *	✓
Vertical scan range	48 - 75 Hz	Operating system installed	Tizen
Haze rate	2%	Operating system version	7.0
Pixel frequency (max)	594 MHz	Weight & dimensions	
RGB colour space	NTSC	Display width	1682.3 mm
Ports & interfaces		Display depth	28.5 mm
HDMI ports quantity *	3	Display height	960.4 mm
HDMI version	2.0	Display weight	33.4 kg
HDMI input ports quantity	3	Packaging data	
DVI port *	✗	Package width	1839 mm
USB port *	✓	Package depth	180 mm
USB ports quantity	2	Package height	1113 mm
Ethernet LAN *	✓	Package weight	41.5 kg
Ethernet LAN (RJ-45) ports	1	Packaging content	
Wi-Fi *	✓	Stand included	✗
RS-232 interface	✓	Operational conditions	
Infrared data port	✓	Operating temperature (T-T)	0 - 40 °C
Remote (IR) input	1	Operating relative humidity (H-H)	10 - 80%
Design			
Product design *	Digital signage flat panel		

Design		Certificates	
Placement supported *	Indoor	Certification	Class B Class B60950-1, 62368-1
Product colour *	Black	Technical details	
Screen shape	Flat	Audio out (mini jack)	1
VESA mounting *	✓	Other features	
Panel mounting interface	400 x 400 mm	Bluetooth	✓
Bezel width (bottom)	1.34 cm	Flash memory	8000 MB
Bezel width (side)	1.34 cm	RS-232 input ports	1
Bezel width (top)	1.34 cm	RS-232 output ports	1
Bezel colour	Charcoal Black	RJ-45 input ports	1
Mounting type	Wall	Optional features	WMN-B50SC STN-L6585C



8806094973952

Disclaimer. The information published here (the "Information") is based on sources that can be considered reliable, typically the manufacturer, but this Information is provided "AS IS" and without guarantee of correctness or completeness. The Information is only indicative and can be changed at any time without notification. No rights can be based on the Information. Suppliers or aggregators of this Information do not accept any liability with regard to the content of (web)pages and other documents, including its Information. The publisher of the Information can not be held liable for the content of 3rd party websites that are linking this Information or are linked to from this Information. You as the User of the Information are solely responsible for the choice and usage of this Information. You are not entitled to transfer, copy or otherwise multiply or distribute the Information. You are obliged to follow the directions of the copyright owner(s) with regard to the use of the Information. Exclusively Dutch law is applicable. With regard to price and stock data on the site, the publisher followed a number of starting points, which are not necessarily relevant for your private or business circumstances. Therefore, the price and stock data are only indicative and are subject to changes. You are personally responsible for the way you use and apply this information. As a user of the Information or sites or documents in which this Information is included, you will adhere to standard fair use including avoidance of spamming, ripping, intellectual-property violations, privacy violations, and any other illegal activity.

Publication date: 19-DEC-2024. Prints or copies of Information are only valid on the printed Publication date