

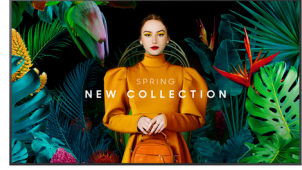
Samsung QB85C Digitaalinen litteä infotaulu 2,16 m (85") LCD Wi-Fi 350 cd/m² 4K Ultra HD musta Sisäänrakennettu prosessori Tizen 16/7

Tuotemerkki : Samsung

Tuoteperhe: QBC

Tuotekoodi:
LH85QBCEBGCXEN

Tuotteen nimi : QB85C



Samsung QB85C. Tuotteen muotoilu: Digitaalinen litteä infotaulu. Näytön halkaisija: 2,16 m (85"), Näytön teknologia: LCD, Näytön erottelutarkkuus: 3840 x 2160 pikseliä, Näytön kirkkaus: 350 cd/m², HD-tyyppi: 4K Ultra HD. Wi-Fi. Toiminta-aika (tunteja/päiviä): 16/7. Käyttöjärjestelmä asennettu: Tizen. Tuotteen väri: musta

Display		Design	
Panel type	VA	Bezel colour	Charcoal Black
Display diagonal *	2.16 m (85")	Mounting type	Wall
Display technology *	LCD	Performance	
Display resolution *	3840 x 2160 pixels	Purpose *	Universal
Display brightness *	350 cd/m ²	Operating hours (hours/days)	16/7
HD type *	4K Ultra HD	HDCP	✓
Touchscreen *	✗	HDCP version	2.2
Response time	10 ms	Power	
Contrast ratio (typical)	4000:1	Power consumption (typical) *	231 W
Dynamic contrast ratio marketing name	Mega Contrast	Power consumption (sleep)	0.5 W
Viewing angle, horizontal	178°	AC input voltage	100-240 V
Viewing angle, vertical	178°	AC input frequency	50-60 Hz
Pixel pitch	0.487 x 0.487 mm	Energy efficiency scale	A to G
Horizontal scan range	30 - 81 kHz	Computer system	
Vertical scan range	48 - 75 Hz	Computer system *	✓
Haze rate	2%	Computer system type	System on Chip (SoC)
Pixel frequency (max)	594 MHz	Built-in processor *	✓
RGB colour space	NTSC	Operating system installed	Tizen
Ports & interfaces		Operating system version	7.0
HDMI ports quantity *	3	Weight & dimensions	
HDMI version	2.0	Display width	1904.3 mm
HDMI input ports quantity	3	Display depth	28.5 mm
DVI port *	✗	Display height	1085.3 mm
USB port *	✓	Display weight	41.9 kg
USB ports quantity	2	Packaging data	
Ethernet LAN *	✓	Package width	2077 mm
Ethernet LAN (RJ-45) ports	1	Package depth	210 mm
Wi-Fi *	✓	Package height	1222 mm
RS-232 interface	✓	Package weight	53.9 kg
Infrared data port	✓	Packaging content	
Remote (IR) input	1	Stand included	✗
Design			
Product design *	Digital signage flat panel		

Design		Operational conditions	
Placement supported *	Indoor	Operating temperature (T-T)	0 - 40 °C
Product colour *	Black	Operating relative humidity (H-H)	10 - 80%
Screen shape	Flat	Technical details	
VESA mounting *	✓	Audio out (mini jack)	1
Panel mounting interface	600 x 400 mm	Other features	
Bezel width (bottom)	1.39 cm	Flash memory	8000 MB
Bezel width (side)	1.39 cm	RS-232 input ports	1
Bezel width (top)	1.39 cm	RS-232 output ports	1
		RJ-45 input ports	1
		Optional features	WMN-B50SC STN-L6585C



8806094973983

Disclaimer. The information published here (the "Information") is based on sources that can be considered reliable, typically the manufacturer, but this Information is provided "AS IS" and without guarantee of correctness or completeness. The Information is only indicative and can be changed at any time without notification. No rights can be based on the Information. Suppliers or aggregators of this Information do not accept any liability with regard to the content of (web)pages and other documents, including its Information. The publisher of the Information can not be held liable for the content of 3rd party websites that are linking this Information or are linked to from this Information. You as the User of the Information are solely responsible for the choice and usage of this Information. You are not entitled to transfer, copy or otherwise multiply or distribute the Information. You are obliged to follow the directions of the copyright owner(s) with regard to the use of the Information. Exclusively Dutch law is applicable. With regard to price and stock data on the site, the publisher followed a number of starting points, which are not necessarily relevant for your private or business circumstances. Therefore, the price and stock data are only indicative and are subject to changes. You are personally responsible for the way you use and apply this information. As a user of the Information or sites or documents in which this Information is included, you will adhere to standard fair use including avoidance of spamming, ripping, intellectual-property violations, privacy violations, and any other illegal activity.

Publication date: 19-DEC-2024. Prints or copies of Information are only valid on the printed Publication date