

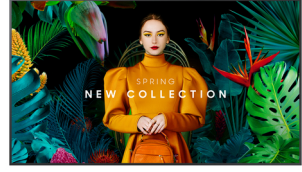
Samsung QB65C Digitaalinen litteä infotaulu 165,1 cm (65") LCD Wi-Fi 350 cd/m² 4K Ultra HD musta Sisäänrakennettu prosessori Tizen 7.0 16/7

Tuotemerkki : Samsung

Tuoteperhe: QBC

Tuotekoodi:
LH65QBCEBGCXEN

Tuotteen nimi : QB65C



Samsung QB65C. Tuotteen muotoilu: Digitaalinen litteä infotaulu. Näytön halkaisija: 165,1 cm (65"), Näytön teknologia: LCD, Näytön erottelutarkkuus: 3840 x 2160 pikseliä, Näytön kirkkaus: 350 cd/m², HD-tyyppi: 4K Ultra HD. Wi-Fi. Toiminta-aika (tunteja/päiviä): 16/7. Käyttöjärjestelmä asennettu: Tizen 7.0. Tuotteen väri: musta

Display		Performance	
Panel type	VA	Purpose *	Universal
Display diagonal *	165.1 cm (65")	Operating hours (hours/days)	16/7
Display technology *	LCD	HDCP	✓
Display resolution *	3840 x 2160 pixels	HDCP version	2.2
Display brightness *	350 cd/m ²	Power	
HD type *	4K Ultra HD	Power consumption (typical) *	187 W
Touchscreen *	✗	Power consumption (sleep)	0.5 W
Response time	8 ms	Energy efficiency class (SDR)	G
Contrast ratio (typical)	4000:1	Energy consumption (SDR) per 1000 hours	104 kWh
Dynamic contrast ratio marketing name	Mega Contrast	AC input voltage	100 - 240 V
Viewing angle, horizontal	178°	AC input frequency	50/60 Hz
Viewing angle, vertical	178°	Energy efficiency scale	A to G
Pixel pitch	0.372 x 0.372 mm	Computer system	
Display diagonal (metric)	163 cm	Computer system *	✓
Horizontal scan range	30 - 81 kHz	Computer system type	System on Chip (SoC)
Vertical scan range	48 - 75 Hz	Built-in processor *	✓
Haze rate	2%	Operating system installed	Tizen 7.0
Pixel frequency (max)	594 MHz	Weight & dimensions	
RGB colour space	NTSC	Display width	1456.8 mm
Ports & interfaces		Display depth	28.5 mm
HDMI ports quantity *	3	Display height	831.9 mm
HDMI version	2.0	Display weight	21.5 kg
HDMI input ports quantity	3	Packaging data	
DVI port *	✗	Package width	1616 mm
USB port *	✓	Package depth	164 mm
USB ports quantity	2	Package height	945 mm
Ethernet LAN *	✓	Package weight	28 kg
Ethernet LAN (RJ-45) ports	1	Operational conditions	
Wi-Fi *	✓	Operating temperature (T-T)	0 - 40 °C
RS-232 interface	✓	Operating relative humidity (H-H)	10 - 80%
Infrared data port	✓	Certificates	
Remote (IR) input	1	Certification	Class B 60950-1, 62368-1

Design		Technical details	
Product design *	Digital signage flat panel	Audio out (mini jack)	1
Placement supported *	Indoor	Other features	
Product colour *	Black	Bluetooth	✓
Screen shape	Flat	Flash memory	8000 MB
VESA mounting *	✓	RS-232 input ports	1
Panel mounting interface	400 x 300 mm	RS-232 output ports	1
Bezel width (bottom)	1.15 cm	RJ-45 input ports	1
Bezel width (side)	1.15 cm	Optional features	WMN-B50SC STN-L6585C
Bezel width (top)	1.15 cm		
Bezel colour	Charcoal Black		



8806094973938

Disclaimer. The information published here (the "Information") is based on sources that can be considered reliable, typically the manufacturer, but this Information is provided "AS IS" and without guarantee of correctness or completeness. The Information is only indicative and can be changed at any time without notification. No rights can be based on the Information. Suppliers or aggregators of this Information do not accept any liability with regard to the content of (web)pages and other documents, including its Information. The publisher of the Information can not be held liable for the content of 3rd party websites that are linking this Information or are linked to from this Information. You as the User of the Information are solely responsible for the choice and usage of this Information. You are not entitled to transfer, copy or otherwise multiply or distribute the Information. You are obliged to follow the directions of the copyright owner(s) with regard to the use of the Information. Exclusively Dutch law is applicable. With regard to price and stock data on the site, the publisher followed a number of starting points, which are not necessarily relevant for your private or business circumstances. Therefore, the price and stock data are only indicative and are subject to changes. You are personally responsible for the way you use and apply this information. As a user of the Information or sites or documents in which this Information is included, you will adhere to standard fair use including avoidance of spamming, ripping, intellectual-property violations, privacy violations, and any other illegal activity.

Publication date: 19-DEC-2024. Prints or copies of Information are only valid on the printed Publication date