

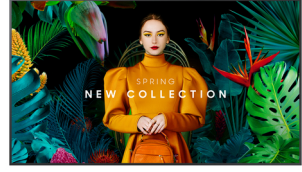
## Samsung QB43C Digitaalinen litteä infotaulu 109,2 cm (43") LCD Wi-Fi 350 cd/m<sup>2</sup> 4K Ultra HD musta Sisäänrakennettu prosessori Tizen 7.0 16/7

**Tuotemerkki :** Samsung

**Tuoteperhe:** QBC

**Tuotekoodi:**  
LH43QBCEBGCXEN

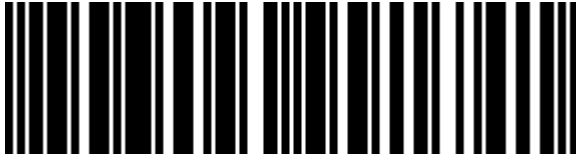
**Tuotteen nimi :** QB43C



Samsung QB43C. Tuotteen muotoilu: Digitaalinen litteä infotaulu. Näytön halkaisija: 109,2 cm (43"), Näytön teknologia: LCD, Näytön erottelutarkkuus: 3840 x 2160 pikseliä, Näytön kirkkaus: 350 cd/m<sup>2</sup>, HD-tyyppi: 4K Ultra HD. Wi-Fi. Toiminta-aika (tunteja/päiviä): 16/7. Käyttöjärjestelmä asennettu: Tizen 7.0. Tuotteen väri: musta

Display		Design	
Panel type	VA	Mounting type	Wall
Display diagonal *	109.2 cm (43")	<b>Performance</b>	
Display technology *	LCD	Purpose *	Universal
Display resolution *	3840 x 2160 pixels	Operating hours (hours/days)	16/7
Display brightness *	350 cd/m <sup>2</sup>	HDCP	✓
HD type *	4K Ultra HD	HDCP version	2.2
Touchscreen *	✗	<b>Power</b>	
Response time	8 ms	Power consumption (typical) *	121 W
Contrast ratio (typical)	4000:1	Power consumption (sleep)	0.5 W
Dynamic contrast ratio marketing name	Mega Contrast	Energy efficiency class (SDR)	G
Viewing angle, horizontal	178°	Energy consumption (SDR) per 1000 hours	74 kWh
Viewing angle, vertical	178°	AC input voltage	100 - 240 V
Pixel pitch	0.245 x 0.245 mm	AC input frequency	50/60 Hz
Display diagonal (metric)	108 cm	Energy efficiency scale	A to G
Horizontal scan range	30 - 81 kHz	<b>Computer system</b>	
Vertical scan range	48 - 75 Hz	Computer system *	✓
Haze rate	2%	Computer system type	System on Chip (SoC)
Pixel frequency (max)	594 MHz	Built-in processor *	✓
RGB colour space	NTSC	Operating system installed	Tizen 7.0
Colour gamut	72%	<b>Weight &amp; dimensions</b>	
<b>Ports &amp; interfaces</b>		Display width	969.5 mm
HDMI ports quantity *	3	Display depth	28.5 mm
HDMI version	2.0	Display height	557.8 mm
HDMI input ports quantity	3	Display weight	8.8 kg
DVI port *	✗	<b>Packaging data</b>	
USB port *	✓	Package width	1093 mm
USB ports quantity	2	Package depth	126 mm
Ethernet LAN *	✓	Package height	667 mm
Ethernet LAN (RJ-45) ports	1	Package weight	11.3 kg
Wi-Fi *	✓	<b>Operational conditions</b>	
RS-232 interface	✓	Operating temperature (T-T)	0 - 40 °C
Infrared data port	✓	Operating relative humidity (H-H)	10 - 80%
Remote (IR) input	1		

Design		Certificates	
Product design *	Digital signage flat panel	Certification	Class B 60950-1, 62368-1
Placement supported *	Indoor	Technical details	
Product colour *	Black	Audio out (mini jack)	1
Screen shape	Flat	Other features	
VESA mounting *	✓	Bluetooth	✓
Panel mounting interface	200 x 200 mm	Flash memory	8000 MB
Bezel width (bottom)	1.15 cm	RS-232 input ports	1
Bezel width (side)	1.15 cm	RS-232 output ports	1
Bezel width (top)	1.15 cm	RJ-45 input ports	1
Bezel colour	Charcoal Black	Optional features	WMN-B50SC STN-L4355C



8806094991741

Disclaimer. The information published here (the "Information") is based on sources that can be considered reliable, typically the manufacturer, but this Information is provided "AS IS" and without guarantee of correctness or completeness. The Information is only indicative and can be changed at any time without notification. No rights can be based on the Information. Suppliers or aggregators of this Information do not accept any liability with regard to the content of (web)pages and other documents, including its Information. The publisher of the Information can not be held liable for the content of 3rd party websites that are linking this Information or are linked to from this Information. You as the User of the Information are solely responsible for the choice and usage of this Information. You are not entitled to transfer, copy or otherwise multiply or distribute the Information. You are obliged to follow the directions of the copyright owner(s) with regard to the use of the Information. Exclusively Dutch law is applicable. With regard to price and stock data on the site, the publisher followed a number of starting points, which are not necessarily relevant for your private or business circumstances. Therefore, the price and stock data are only indicative and are subject to changes. You are personally responsible for the way you use and apply this information. As a user of the Information or sites or documents in which this Information is included, you will adhere to standard fair use including avoidance of spamming, ripping, intellectual-property violations, privacy violations, and any other illegal activity.