

## Lindy 47155 networking cable Blue 20 m Cat6a S/FTP (S-STP)

**Brand :** Lindy

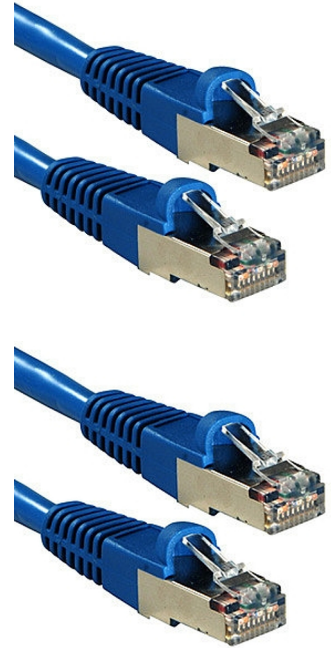
**Product code:** 47155

**Product name :** 47155

- Twisted Pair Patch Cable with RJ45 connectors
- Cat.6A S/FTP PIMF, LSZH
- Integrated snagless connector for latch protection
- Gold plated pins for better conductivity and elimination of signal loss

20m Cat.6A S/FTP LSZH Network Cable, Blue

Lindy 47155. Cable length: 20 m, Cable standard: Cat6a, Cable shielding: S/FTP (S-STP), Connector 1: RJ-45, Connector 2: RJ-45, Connector contacts plating: Gold, Data transfer rate: 1000 Mbit/s, Product colour: Blue



### Features

Product colour *	Blue
Cable length *	20 m
Cable standard *	Cat6a
Cable shielding *	S/FTP (S-STP)
Connector 1 *	RJ-45
Connector 2 *	RJ-45
Connector 1 gender *	Male
Connector 2 gender *	Male
Connector contacts plating	Gold

### Features

Cable class	Ea
Cabling technology	10/100/1000Base-T(X)
AWG wire size	27
Data transfer rate	1000 Mbit/s
Plug and Play	✓

### Packaging data

Quantity per pack	1 pc(s)
-------------------	---------

### Logistics data

Harmonized System (HS) code	84733080
-----------------------------	----------



4002888471558

Disclaimer. The information published here (the "Information") is based on sources that can be considered reliable, typically the manufacturer, but this Information is provided "AS IS" and without guarantee of correctness or completeness. The Information is only indicative and can be changed at any time without notification. No rights can be based on the Information. Suppliers or aggregators of this Information do not accept any liability with regard to the content of (web)pages and other documents, including its Information. The publisher of the Information can not be held liable for the content of 3rd party websites that are linking this Information or are linked to from this Information. You as the User of the Information are solely responsible for the choice and usage of this Information. You are not entitled to transfer, copy or otherwise multiply or distribute the Information. You are obliged to follow the directions of the copyright owner(s) with regard to the use of the Information. Exclusively Dutch law is applicable. With regard to price and stock data on the site, the publisher followed a number of starting points, which are not necessarily relevant for your private or business circumstances. Therefore, the price and stock data are only indicative and are subject to changes. You are personally responsible for the way you use and apply this information. As a user of the Information or sites or documents in which this Information is included, you will adhere to standard fair use including avoidance of spamming, ripping, intellectual-property violations, privacy violations, and any other illegal activity.

Publication date: 21-SEP-2024. Prints or copies of Information are only valid on the printed Publication date