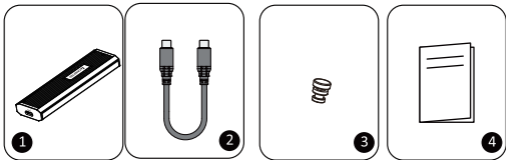


Technical data

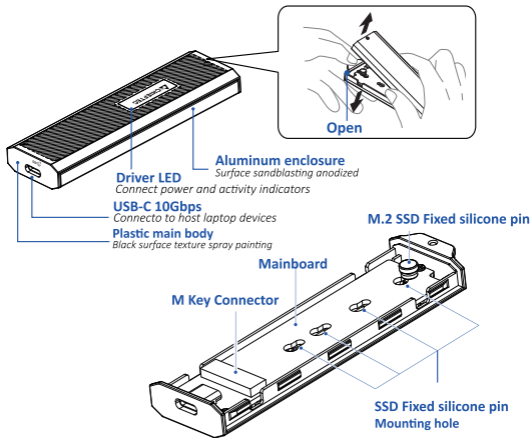
- Model: CEB-M2C-TLE
- Dimension (mm): 115.5 x 32 x 12.5
- Weight: 50.5 g
- Compatible SSD Type & Dimensions:
 - M.2 PCI-E NVME SSD (M & B+M Key) 2230/2242/2260/2280
 - M.2 SATA SSD (B+M Key) 2230/2242/2260/2280
- USB Interface(ext.): USB 3.2 Gen2 Type-C
- Data transfer rate: Up to 10 GBit/s (USB 3.2 Gen2)
- Power: via Type-C Data Cable
- Operating temperature: 5°C ~55°C
- Operating System: Mac OS X 10.14.4 and future releases.
Windows XP, 7 SP1 32 and 64 bit, Windows 8/8.1 32 and 64 bit,
Windows 10 32 and 64bit and future releases.

Package Contents



1. SSD Enclosure
2. USB 3.2 Gen.2 Type-C to Type-C Cable
3. Fixed silicone plug
4. Manual

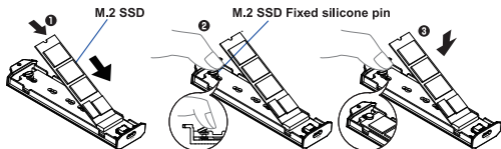
Product Diagram



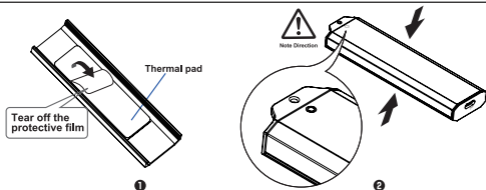
Installation Guide



1. open the aluminum cover (as shown)



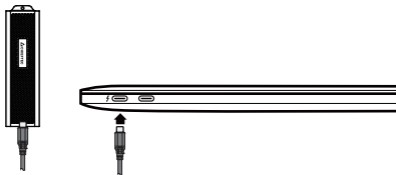
2.
 - ① Insert the M.2 SSD into the M Key connector.
 - ② Use your fingertips to poke the SSDs fixed silicone pin in the direction of the diagram.
 - ③ Insert the M.2 SSDs and press it to level and secure it with the SSD fixed silicone pin.



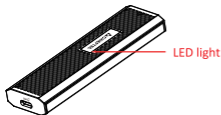
3.
 - ① Remove the protective film from the heat pad
 - ② Install the tray into the enclosure.(as shown).

Connection and operating

Connect the External NVME SSD on your device.



LED Indicators



- 1.Power LED : Solid Blue for power on.
- 2.Activity LED : Flashing Blue LED for activity.



Manufacturer: Arena Electronic GmbH
Koppersstr. 18 , 40549 Düsseldorf, Germany
www.chieftec.eu