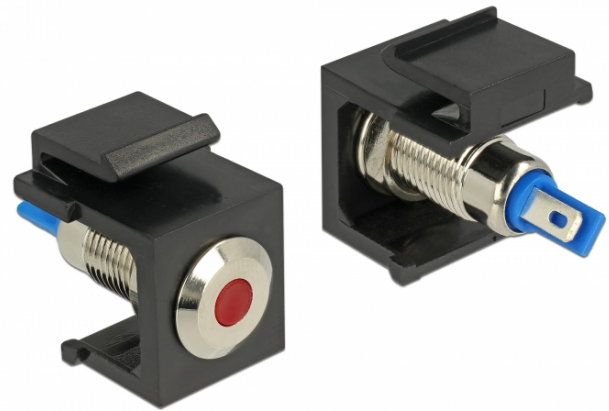


Delock Keystone LED red 6 V flat, black

Description

This Keystone LED by Delock can be installed in e.g. a housing or device, to indicate different operating states. With its standardised dimensions it can be used for easy snap-in mounting in e.g. a Keystone patch panel, face plate or surface-mount box.



Specification

- Connectors:
internal: 2 x solder connection
- Operating voltage / current: 6 V DC / 3 A
- For Keystone ports with 19.2 x 14.9 mm
- LED colour: red
- Length in front of the panel: ca. 1.5 mm
- Housing colour: black
- Dimensions (LxWxH): ca. 27.3 x 16.3 x 22.3 mm

Package content

- Keystone LED

Item no. 86464

EAN: 4043619864645

Country of origin: Taiwan, Republic of China

Package: Poly bag



General	
Mounting type:	Keystone module
Interface	
Internal:	2 x solder connection
Technical characteristics	
Operating voltage:	6 V DC / 3 A
Physical characteristics	
Housing colour:	black
Length:	27.3 mm
Width:	16.3 mm
Height:	22.3 mm
LED colour:	red