

PHILIPS

Headphones

8000 Series

TAH8506



User manual

Register your product and get support at
www.philips.com/support

Contents

| | | |
|---|-------------------------------|---|
| 1 | Important safety instructions | 2 |
| | Hearing Safety | 2 |
| | General information | 2 |

| | | |
|---|--|---|
| 2 | Your Bluetooth over-ear headphones | 3 |
| | What's in the box | 3 |
| | Other devices | 3 |
| | Overview of your Bluetooth wireless headphones | 4 |

| | | |
|---|--|---|
| 3 | Get started | 5 |
| | Charge the battery | 5 |
| | Pair the headphones with your mobile phone | 5 |

| | | |
|---|---|---|
| 4 | Use your headphones | 6 |
| | Connect the headphones to your Bluetooth device | 6 |
| | Manage your calls and music | 6 |

| | | |
|---|----------------|---|
| 5 | Technical data | 8 |
|---|----------------|---|

| | | |
|---|--|----|
| 6 | Notice | 9 |
| | Declaration of conformity | 9 |
| | Disposal of your old product and battery | 9 |
| | Remove the integrated battery | 9 |
| | Compliance with EMF | 9 |
| | Environmental information | 10 |
| | Notice of compliance | 10 |

| | | |
|---|------------|----|
| 7 | Trademarks | 11 |
|---|------------|----|

| | | |
|---|----------------------------|----|
| 8 | Frequently asked questions | 12 |
|---|----------------------------|----|

1 Important safety instructions

Hearing Safety



Danger

- To avoid hearing damage, limit the time you use headphones at high volume and set the volume to a safe level. The louder the volume, the shorter the safe listening time is.

Be sure to observe the following guidelines when using your headphones.

- Listen at reasonable volumes for reasonable periods of time.
- Be careful not to adjust the volume continuously upwards as your hearing adapts.
- Do not turn up the volume so high that you can't hear what's around you.
- You should use caution or temporarily discontinue use in potentially hazardous situations.
- Excessive sound pressure from earphones and headphones can cause hearing loss.
- Using headphones with both ears covered while driving is not recommended and may be illegal in some areas while driving.
- For your safety, avoid distractions from music or phone calls while in traffic or other potentially dangerous environments.

General information

To avoid damage or malfunction:

Caution

- Do not expose headphones to excessive heat.
- Do not drop your headphones.
- Headphones shall not be exposed to dripping or splashing. (Refer to the IP rating of specific product)
- Do not allow your headphones to be submerged in water.
- Do not charge your headphones when the connector or socket is wet.
- Do not use any cleaning agents containing alcohol, ammonia, benzene, or abrasives.
- If cleaning is required use a soft cloth, if necessary dampened with a minimum amount of water or diluted mild soap, to clean the product.
- The integrated battery shall not be exposed to excessive heat such as sunshine, fire or the like.
- Danger of explosion if battery is incorrectly replaced. Replace only with the same or equivalent type.
- To achieve the specific IP rating, the charging slot cover must be closed.
- Disposal of a battery into fire or a hot oven, or mechanically crushing or cutting of a battery, can result in an explosion.
- Leaving a battery in an extremely high temperature surrounding environment can result in an explosion or the leakage of flammable liquid or gas.
- A battery subjected to extremely low air pressure that may result in an explosion or the leakage of flammable liquid or gas.

About operating and storage temperatures and humidity

- Store in a place where temperature is between -20°C (-4°F) and 50°C (122°F) (up to 90% relative humidity).
- Operate in a place where temperature is between 0°C (32°F) and 45°C (113°F) (up to 90% relative humidity).
- Battery life may be shorter in high or low temperature conditions.
- Replacement of a battery with an incorrect type that can defeat a safeguard (for example, in the case of some lithium battery types);

2 Your Bluetooth over-ear headphones

Congratulations on your purchase, and welcome to Philips! To fully benefit from the support that Philips offers, register your product at www.philips.com/support.

With this Philips over-ear headphones, you can:

- enjoy convenient wireless handsfree calls;
- enjoy and control wireless music;
- switch between calls and music;
- enjoy noise cancelation.

What's in the box



Philips Bluetooth headphones Philips TAH8506



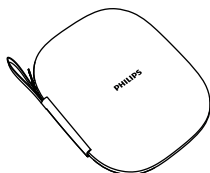
USB charging cable (for charging only)



Audio cable



Plane Adaptor



Carrying case



Quick start guide



Global Warranty

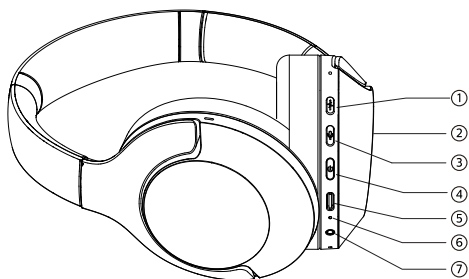


Safety leaflet

Other devices

A mobile phone or device (e.g. notebook, tablet, Bluetooth adapters, MP3 players etc) which supports Bluetooth and is compatible to the headphones (see 'Technical data' on page 8).

Overview of your Bluetooth wireless headphones



- ① ANC Mode Button
- ② Touch Pad
- ③ Voice Assistant Button
- ④ Power Button
- ⑤ USB-C
- ⑥ Indicator LED
- ⑦ 2.5mm Audio Jack

3 Get started

Charge the battery

Note

- Before you use your headphones for the first time, charge the battery for 2 hours for optimum battery capacity and lifetime.
- Use only the original USB charging cable to avoid any damage.
- Finish your call before charging the headphones, as connecting the headphones for charging will power the headphones off.

Connect the supplied USB charging cable to:


- The USB type C charging slot on the headphones and;
 - The charger/USB port of a computer.
- ↳ LED turns white during charging and turns off when the headphones in fully charged.

Tip

- Normally, a full charge takes 2 hours.

Pair the headphones with your mobile phone

Before you use the headphones with your mobile phone for the first time, pair it with a mobile phone. A successful pairing establishes a unique encrypted link between the headphones and mobile phone. The headphones store the last 4 devices in the memory. If you try to pair more than 4 devices, the earliest paired device is replaced by the new one.

- 1 Make sure that the headphones are fully charged and turned off.
- 2 Press and hold  for 5 seconds until the blue and white LED flashes alternately.
 - ↳ The headphones remain in pairing mode for 5 minutes.
- 3 Make sure that the mobile phone is turned on and its Bluetooth feature is activated.
- 4 Pair the headphones with the mobile phone. For detailed information, refer to the user manual of your mobile phone.

The following example shows you how to pair the headphones with your mobile phone.

- ↳ Activate the Bluetooth feature of your mobile phone, select **Philips TAH8506**



Philips TAH8506

4 Use your headphones

Connect the headphones to your Bluetooth device

- 1 Turn on your mobile phone/Bluetooth device.
- 2 Press and hold the on/off button to turn the headphones on.
 - ↳ The white LED will turn on in 2s.
 - ↳ The headphones are reconnected to the last connected mobile phone/Bluetooth device automatically.

Tip

- If you turn on the mobile phone/Bluetooth device or activate the Bluetooth feature after turning on the headphones, you have to reconnect the headphones and mobile phone/Bluetooth device manually.

Note

- If the headphones fail to connect to last connected Bluetooth device within range in 5 minutes, it will change to connectable mode, then will switch off automatically if it's still not connected to any Bluetooth device 5 minutes later.

Multi-point connection

Pairing

- Pairing the headphones to two devices, e.g. mobile phone and notebook.

Switch between devices

- Music can only be played from one device at a time. Your second device will be reserved for phone calls.
- Pause the audio from one device to start playing audio from your other device.

Note

- Receiving a call on device two will pause playback on device one. The call will be routed automatically to your headphones.
- Ending the call will resume playback from device one automatically.

Wired connection

You can also use the headphones with the audio cable provided. Connect the supplied audio cable to the headphones and external audio device.

Manage your calls and music

On/off

| Task | Button | Operation |
|-------------------------|--------------|---|
| Turn the headphones on | Power button | Press and hold for 2 seconds |
| Turn the headphones off | Power button | Press and hold for 2 seconds ↳ The white LED is on and fades out |

Music control

| Task | Button | Operation |
|---------------------|-----------|-------------------------|
| Play or pause music | Touch Pad | Tap 2 times |
| Adjust volume | Touch Pad | Swipe up/ Swipe down |
| Next track | Touch Pad | Swipe front |
| Previous track | Touch Pad | Swipe back |

Call control

| Task | Button | Operation |
|-------------------------------------|-----------|-------------|
| Pick up a call | Touch Pad | Tap 2 times |
| Reject/hang up a call | Touch Pad | Touch 1 sec |
| Answer new call during a call | Touch Pad | Tap 2 times |
| Reject new call during a call | Touch Pad | Touch 1 sec |
| Switch call when answered two calls | Touch Pad | Tap 2 times |

ANC control

| Task | Button | Operation |
|-----------------------------------|-----------------|------------|
| ANC ON/ Awareness mode/ANC OFF | ANC Mode button | Press once |

Awareness Mode

| Task | Button | Operation |
|--------------------|-----------------|------------------------------|
| Awareness mode | ANC Mode Button | Press until hear "Awareness" |
| Quick conversation | Touch Pad | Palm over the Right ear cup |

Smartphone voice assist function (e.g. Google app, Siri)

| Task | Button | Operation |
|--|------------------------|------------|
| Wake up smartphone voice assist function | Voice Assistant Button | Press once |



Note

- Please refer to the operating instructions of the smartphone.

Other headphones indicator status

| Headphones status | Indicator |
|--|---|
| The headphones are connected to a Bluetooth device, while the headphones in standby mode or while you are listening to music | The blue LED blinks slowly |
| The headphones are ready for pairing | The LED flashes blue and white alternately. |
| The headphones are on but not connected to a Bluetooth device | The blue LED flashes once every 2s. If no connection can be made, the headphones will turn itself off within 5 mins |
| Low battery level | The white LED blinks slowly until it is out of power |
| Battery is fully charged | White LED is off |

APP DOWNLOAD

Scan the QR code/press 'Download' button or search 'Philips Headphones' in Apple App Store or Google Play to download App.



5 Technical data

Headphones

- Music play time (ANC off): up to 60 hours
- Music play time (ANC on): up to 45 hours
- Charging time: 2 hours
- Rechargeable lithium ion battery (800 mAh)
- Bluetooth version: 5.0
- Compatible Bluetooth profiles:
 - HFP (Hands-Free Profile)
 - A2DP (Advanced Audio Distribution Profile)
 - AVRCP (Audio Video Remote Control Profile)
- Frequency range: 2.402-2.480GHz
- Transmitter power: < 10 dBm
- Operating range: Up to 10 meters (33 feet)
- Digital echo & noise reduction
- Auto power off
- Type -C-USB port for charging
- Supports AAC and SBC

Note

- Specifications are subject to change without notice.
- Battery life of playtime is approximate and may vary depending on application condition.

6 Notice

Declaration of conformity

Hereby, MMD Hong Kong Holding Limited declares that this product is in compliance with the essential requirements and other relevant provisions of Directive 2014/53/EU. You can find the Declaration of Conformity on www.p4c.philips.com.

Disposal of your old product and battery



Your product is designed and manufactured with high quality materials and components, which can be recycled and reused.



This symbol on a product means that the product is covered by European Directive 2012/19/EU.

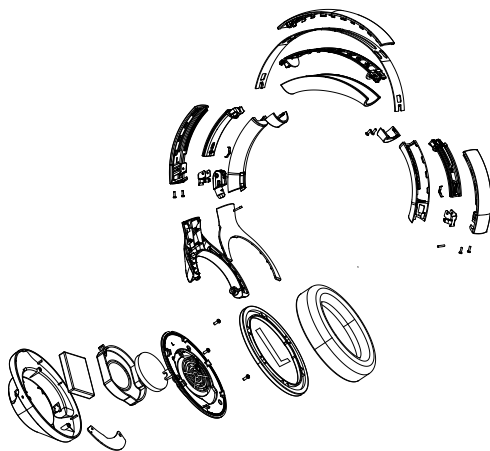


This symbol means that the product contains a built-in rechargeable battery covered by European Directive 2013/56/EU which cannot be disposed of with normal household waste. We strongly advise you to take your product to an official collection point or a Philips service centre to have a professional remove the rechargeable battery. Inform yourself about the local separate collection system for electrical and electronic products and rechargeable batteries. Follow local rules and never dispose of the product and rechargeable batteries with normal household waste. Correct disposal of old products and rechargeable batteries helps prevent negative consequences for the environment and human health.

Remove the integrated battery

If there is no collection/recycling system for electronic products in your country, you can protect the environment by removing and recycling the battery before disposing the headphones.

- Make sure the headphones is disconnected from the charging case before removing the battery.



Compliance with EMF

This product complies with all applicable standards and regulations regarding exposure to electromagnetic fields.

Environmental information

All unnecessary packaging has been omitted. We have tried to make the packaging easy to separate into three materials: cardboard (box), polystyrene foam (buffer) and polyethylene (bags, protective foam sheet.)

Your system consists of materials which can be recycled and reused if disassembled by a specialized company. Please observe the local regulations regarding the disposal of packaging materials, exhausted batteries and old equipment.

Notice of compliance

The device complies with the FCC rules, Part 15. Operation is subject to the following two conditions:

1. **This device may not cause harmful interference, and**
2. **This device must accept any interference received, including interference that may cause undesired operation.**

FCC rules

This equipment has been tested and found to comply with the limits for a Class B digital device, pursuant to part 15 of the FCC Rules. These limits are designed to provide reasonable protection against harmful interference in a residential installation. This equipment generates, uses and can radiate radio frequency energy and, if not installed and used in accordance with the instruction manual, may cause harmful interference to radio communications. However, there is no guarantee that interference will not occur in a particular installation. If this equipment does cause harmful interference to radio or

television reception, which can be determined by turning the equipment off and on, the user is encouraged to try to correct the interference by one or more of the following measures:

- Reorient or relocate the receiving antenna.
- Increase the separation between equipment and receiver
- Connect the equipment into an outlet on a circuit different from that to which the receiver is connected.
- Consult the dealer or an experienced radio/TV technician for help.

FCC Radiation Exposure Statement:

This equipment complies with FCC radiation exposure limits set forth for an uncontrolled environment.

This transmitter must not be co-located or operating in conjunction with any other antenna or transmitter.

Caution: The user is cautioned that changes or modifications not expressly approved by the party responsible for compliance could void the user's authority to operate the equipment.

Canada:

This device contains licence-exempt transmitter(s)/receiver(s) that comply with Innovation, Science and Economic Development Canada's licence-exempt RSS(s). Operation is subject to the following two conditions: (1) this device may not cause harmful interference, and (2) This device must accept any interference received, including interference that may cause undesired operation of the device.

CAN ICES-3(B)/NMB-3(B)

IC Radiation Exposure Statement:

This equipment complies with Canada radiation exposure limits set forth for uncontrolled environments.

This transmitter must not be co-located or operating in conjunction with any other antenna or transmitter.

7 Trademarks

Bluetooth

The Bluetooth® word mark and logos are registered trademarks owned by Bluetooth SIG, Inc. and any use of such marks by Top Victory Investment Limited is under license. Other trademarks and trade names are those of their respective owners.

Siri

Siri is a trademark of Apple Inc., registered in the U.S. and other countries.

Google

Google is a trademark of Google LLC. The Google Assistant is not available in certain languages and countries.

8 Frequently asked questions

My Bluetooth headphones do not turn on.

The battery level is low. Charge the headphones.

I cannot pair my Bluetooth headphones with my Bluetooth device.

The Bluetooth is disabled. Enable the Bluetooth feature on your Bluetooth device and turn on the Bluetooth device before you turn on the headphones.

How to reset pairing.

Press and hold both Power + ANC button for 3s, the LED lights up blue and then blue and white leds flash alternately.

I hear but cannot control music on my Bluetooth device (e.g. play/pause/skip forward/backward).

Make sure the Bluetooth audio source supports AVRCP (see 'Technical data' on page 8).

The volume level of the headphones are too low.

Some Bluetooth devices cannot link the volume level with the headphones through volume sync. In this case, you have to adjust the volume on your Bluetooth device independently to achieve an appropriate volume level.

The Bluetooth device cannot find the headphones.

- The headphones may be connected to a previously paired device. Turn off the connected device or move it out of range.
- Pairing may have been reset or the headphones have been previously paired with another device. Pair the headphones with the Bluetooth device again as described in the user manual. (see 'Pair the headphones with your Bluetooth device at the first time' on page 6).

My Bluetooth headphones are connected to a Bluetooth stereo enabled mobile phone, but music only plays on the mobile phone speaker.

Refer to the user manual of your mobile phone. Select to listen to music through the headphones.

The audio quality is poor and crackling noise can be heard.

- The Bluetooth device is out of range. Reduce the distance between your headphones and Bluetooth device, or remove obstacles between them.
- Charge your headphones.

For further support, visit www.philips.com/support.



2021 © MMD Hong Kong Holding Limited. All rights reserved. Specifications are subject to change without notice. Philips and the Philips Shield Emblem are registered trademarks of Koninklijke Philips N.V. and are used under license. This product has been manufactured by and is sold under the responsibility of MMD Hong Kong Holding Limited or one of its affiliates, and MMD Hong Kong Holding Limited is the warrantor in relation to this product. All other company and product names may be trademarks of its respective companies with which they are associated.

