

# SFP Guide

## SFP Module Selection Guide

### Gigabit SFPs



#### **C000065L008A**

Single Mode Optical 1000BaseLX SFP Interface per ODU

Speed: 1 G

Mode: Single

Wavelength: 1310nm

Kit Contents: SFP Module, Cable Gland (P16 Long), Licence Key document

Spare Glands: N000000L140A

Product Support: PTP 650/670, PTP 700 4400-5725 MHz

Operating Temperature: (-40°C to +85°C )



#### **C050055L003A**

PTP 550 SFP Single Mode Optical 1000BaseLX SFP Interface per ODU

Speed: 1 G

Mode: Single

Wavelength: 1310nm

Kit Contents: SFP Module, Cable Gland (P16 Long)

Spare Glands: N000000L140A

Product Support: PTP 550/PTP 550E

Operating Temperature: (-40°C to +85°C )



#### **N000082L059A**

PTP 820 SFP Optical 1000Base-LX,EXT TEMP, 1310 nm, Single Mode

Speed: 1 G

Mode: Single

Wavelength: 1310nm

Kit Contents: SFP Module

Spare Glands: N000082L014A

Product Support: PTP 820/ PTP 850

Operating Temperature: (-40°C to +85°C )



#### **N000082L213A**

PTP 820 SFP, single fiber,1490nm Tx/1310nm Rx, SM, EXT TEMP

Speed: 1 G

Mode: Single

Wavelength: 1490nm TX & 1310 RX

Kit Contents: SFP Module

Spare Glands: N000082L014A

Product Support: PTP 820/ PTP 850

Operating Temperature: (-10°C to +70°C )

## SFP Module Selection Guide

### Gigabit SFPs



#### **N000082L214A**

PTP 820 SFP, single fiber, 1310nm Tx/1490nm Rx, SM, EXT TEMP

Speed: 1 G

Mode: Single

Wavelength: 1310nm TX & 1490 RX

Kit Contents: SFP Module

Spare Glands: N000082L014A

Product Support: PTP 820/ PTP 850

Operating Temperature: (-10°C to +70°C)



#### **N800082L010A**

PTP 820 CSFP, 1310nm Tx/1490nm Rx, SM, EXT TEMP

Speed: 1 G

Mode: Single

Wavelength: 1310nm TX & 1490 RX

Kit Contents: SFP Module

Spare Glands: N000082L014A

Product Support: PTP 820/ PTP 850

Operating Temperature: (-40°C to +85°C)



#### **N800082L011A**

PTP 820 CSFP, 1490nm Tx/1310nm Rx, SM, EXT TEMP

Speed: 1 G

Mode: Single

Wavelength: 1490nm TX & 1310 RX

Kit Contents: SFP Module

Spare Glands: N000082L014A

Product Support: PTP 820/ PTP 850

Operating Temperature: (-40°C to +85°C)



#### **SFP-1G-LX**

1G SFP SMF LX Transceiver, 1310nm. -40C to 85C

Speed: 1 G

Mode: Single

Wavelength: 1310nm

Kit Contents: SFP Module

Spare Glands: C000000L124A-cnWave, N000000L140A-PMP 450m

Product Support: 60GHz cnWave(V3000, V5000), cnMatrix, PMP 450m, cnRanger

Operating Temperature: (-40°C to +85°C)

## SFP Module Selection Guide

### Gigabit SFPs



#### **C000065L009A**

Multi-mode Optical 1000BaseSX SFP Interface per ODU

Speed: 1 G

Mode: Multi

Wavelength: 850nm

Kit Contents: SFP Module, Cable Gland (P16 Long),Licence Key docuemt

Spare Glands: N000000L140A

Product Support: PTP 650/670, PTP 700 4400-5725 MHz

Operating Temperature: (-40°C to +85°C )



#### **C050055L002A**

PTP 550 SFP Multi-mode Optical 1000BaseSX SFP Interface per ODU

Speed: 1 G

Mode: Multi

Wavelength: 850nm

Kit Contents: SFP Module, Cable Gland (P16 Long)

Spare Glands: N000000L140A

Product Support: PTP 550/PTP 550E

Operating Temperature: (0°C to +70°C )



#### **N000082L072A**

PTP 820 SFP Optical 1000Base-SX,EXT TEMP, 850 nm, Multi Mode

Speed: 1 G

Mode: Multi

Wavelength: 850nm

Kit Contents: SFP Module

Spare Glands: N000082L014A

Product Support: PTP 820/ PTP 850

Operating Temperature: (-40°C to +85°C )



#### **SFP-1G-SX**

1G SFP MMF SX Transceiver, 850nm. -40C to 85C

Speed: 1 G

Mode: Multi

Wavelength: 850nm

Kit Contents: SFP Module

Spare Glands: C000000L124A-cnWave,N000000L140A-PMP 450m

Product Support: 60GHz cnWave(V3000,V5000),cnMatrix,PMP 450m,cnRanger

Operating Temperature: (-40°C to +85°C )

## SFP Module Selection Guide

### Gigabit SFPs



#### **C000065L010A**

Gigabit Ethernet 1000BaseT SFP Interface per ODU

Speed: 1 G

Mode: Gigabit-Ethernet

Wavelength: NA

Kit Contents: SFP Module, Cable Gland (P16 Long),Licence Key docuemt

Spare Glands: N000000L140A

Product Support: PTP 650/670, PTP 700 4400-5725 MHz

Operating Temperature: (-40°C to +85°C )



#### **C050055L001A**

PTP 550 SFP Interface for Gigabit Ethernet 1000BaseT per ODU

Speed: 1 G

Mode: Gigabit-Ethernet

Wavelength: NA

Kit Contents: SFP Module, Cable Gland (P16 Long)

Spare Glands: N000000L140A

Product Support: PTP 550/PTP 550E

Operating Temperature: (-40°C to +85°C )



#### **N000082L117A**

PTP 820 SFP Electric Int 1000Base-T,EXT TEMP

Speed: 1 G

Mode: Gigabit-Ethernet

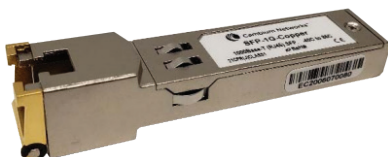
Wavelength: NA

Kit Contents: SFP Module

Spare Glands: N000082L014A

Product Support: PTP 820/ PTP 850

Operating Temperature: (-40°C to +85°C )



#### **SFP-1G-COPPER**

1000Base-T (RJ45) SFP Transceiver. -40C to 85C

Speed: 1 G

Mode: Gigabit-Ethernet

Wavelength: NA

Kit Contents: SFP Module

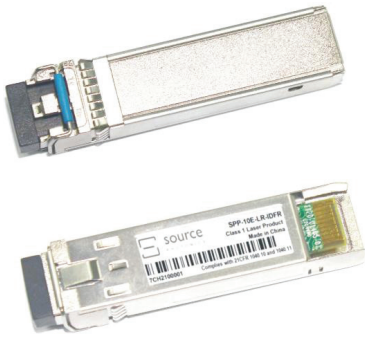
Spare Glands: C000000L124A-cnWave,N000000L140A-PMP 450m

Product Support: 60GHz cnWave(V3000,V5000), cnMatrix, PMP 450m, cnRanger

Operating Temperature: (-40°C to +85°C )

## SFP Module Selection Guide

### Multi-Gigabit SFPs



#### **N800082L013A**

PTP 820/850 SFP+, 1310nm,SM, 10Gbit, Industrial Grade

Speed: 10 G

Mode: Single

Wavelength: 1310nm

Kit Contents: SFP Module

Spare Glands: N000082L014A

Product Support: PTP 820 / PTP 850

Operating Temperature: (-40°C to +85°C )



#### **SFP-10G-LR**

10G SFP+ SMF LR Transceiver, 1310nm. -40C to 85C

Speed: 10 G

Mode: Single

Wavelength: 1310nm

Kit Contents: SFP Module

Spare Glands: C000000L124A-CnWave

Product Support: 60GHz cnWave(V3000,V5000), cnMatrix, cnRanger

Operating Temperature: (-40°C to +85°C )



#### **N800082L012A**

PTP 820 SFP+, 850nm,MM, 10Gbit, Industrial Grade

Speed: 10 G

Mode: Multi

Wavelength: 850nm

Kit Contents: SFP Module

Spare Glands: N000082L014A

Product Support: PTP 820/ PTP 850

Operating Temperature: (-40°C to +85°C )



#### **SFP-10G-SR**

10G SFP+ MMF SR Transceiver, 850nm. -40C to 85C

Speed: 10 G

Mode: Multi

Wavelength: 850nm

Kit Contents: SFP Module

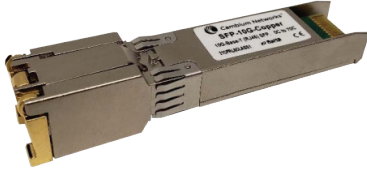
Spare Glands: C000000L124A-CnWave

Product Support: 60GHz cnWave(V3000,V5000), cnMatrix, cnRanger

Operating Temperature: (-40°C to +85°C )

## SFP Module Selection Guide

### Multi-Gigabit SFPs



#### **SFP-10G-COPPER**

10G Base-T (RJ45) SFP Transceiver. 0C to 70C

Speed: 10 G

Mode: Gigabit-Ethernet

Wavelength: NA

Kit Contents: SFP Module

Spare Glands: C000000L124A-CnWave

Product Support: 60GHz cnWave(V3000,V5000), cnMatrix, cnRanger

Operating Temperature: (0°C to +70°C )

---



#### **N000082L203A**

PTP 850 QSFP Transceiver

Speed: 40 G

Mode: Multi

Wavelength: 850nm

Kit Contents: SFP Module

Spare Glands: N000082L014A

Product Support: PTP 850

Operating Temperature: (-40°C to +85°C )

---

## SFP Module Selection Guide

### SFP Product Compatibility

Product	1G 850nm	1G 1310nm	1G Copper	1G SFP 1490nmTx/ 1310nm Rx	1G SFP 1310nmTx/ 1490nm Rx	1G CSFP 1490nmTx/ 1310nm Rx	1G SFP C1310nmTx/ 1490nm Rx	10G 850nm	10G 1310nm	10G Copper	40G
PTP 550	C050055L002A	C050055L003A	C050055L001A	N/A	N/A	N/A	N/A	N/A	N/A	N/A	N/A
PTP 550E	C050055L002A	C050055L003A	C050055L001A	N/A	N/A	N/A	N/A	N/A	N/A	N/A	N/A
PTP 670	C000065L009A	C000065L008A	C000065L010A	N/A	N/A	N/A	N/A	N/A	N/A	N/A	N/A
PTP 700 4400-5725 MHz	C000065L009A	C000065L008A	C000065L010A	N/A	N/A	N/A	N/A	N/A	N/A	N/A	N/A
PTP 700 7125-8500 MHz	N000070L016A	N000070L015A	N000070L017A	N/A	N/A	N/A	N/A	N/A	N/A	N/A	N/A
PTP 820E	N000082L072A	N000082L059A	N000082L117A	N000082L213A	N000082L214A	N800082L011A	N800082L010A	N800082L012A	N800082L013A	N/A	N/A
PTP 820F	N000082L072A	N000082L059A	N000082L117A	N/A	N/A	N/A	N/A	N/A	N/A	N/A	N/A
PTP 820G	N000082L072A	N000082L059A	N000082L117A	N/A	N/A	N/A	N/A	N/A	N/A	N/A	N/A
PTP 820S	N000082L072A	N000082L059A	N000082L117A	N/A	N/A	N/A	N/A	N/A	N/A	N/A	N/A
PTP 820C HP	N000082L072A	N000082L059A	N000082L117A	N/A	N/A	N/A	N/A	N/A	N/A	N/A	N/A
PTP 820C	N000082L072A	N000082L059A	N000082L117A	N/A	N/A	N/A	N/A	N/A	N/A	N/A	N/A
PTP 850E	N000082L072A	N000082L059A	N000082L117A	N000082L213A	N000082L214A	N800082L011A	N800082L010A	N800082L012A	N800082L013A	N/A	N000082L203A
PTP 850C	N000082L072A	N000082L059A	N000082L117A	N000082L213A	N000082L214A	N800082L011A	N800082L010A	N800082L012A	N800082L013A	N/A	N/A
PTP 850S	N000082L072A	N000082L059A	N000082L117A	N000082L213A	N000082L214A	N800082L011A	N800082L010A	N800082L012A	N800082L013A	N/A	N000082L203A
V3000	SFP-1G-SX	SFP-1G-LX	SFP-1G-Copper	N/A	N/A	N/A	N/A	SFP-10G-SR	SFP-10G-LR	SFP-10G-Copper	N/A
V5000	SFP-1G-SX	SFP-1G-LX	SFP-1G-Copper	N/A	N/A	N/A	N/A	SFP-10G-SR	SFP-10G-LR	SFP-10G-Copper	N/A
PMP 450m	C000065L009A	C000065L008A	C000065L010A	N/A	N/A	N/A	N/A	N/A	N/A	N/A	N/A
EX1010	SFP-1G-SX	SFP-1G-LX	SFP-1G-Copper	N/A	N/A	N/A	N/A	N/A	N/A	N/A	N/A
EX1010-P	SFP-1G-SX	SFP-1G-LX	SFP-1G-Copper	N/A	N/A	N/A	N/A	N/A	N/A	N/A	N/A
EX1028	SFP-1G-SX	SFP-1G-LX	SFP-1G-Copper	N/A	N/A	N/A	N/A	N/A	N/A	N/A	N/A
EX1028-P	SFP-1G-SX	SFP-1G-LX	SFP-1G-Copper	N/A	N/A	N/A	N/A	N/A	N/A	N/A	N/A
EX2010	SFP-1G-SX	SFP-1G-LX	SFP-1G-Copper	N/A	N/A	N/A	N/A	N/A	N/A	N/A	N/A
EX2010-P	SFP-1G-SX	SFP-1G-LX	SFP-1G-Copper	N/A	N/A	N/A	N/A	N/A	N/A	N/A	N/A
EX2028	SFP-1G-SX	SFP-1G-LX	SFP-1G-Copper	N/A	N/A	N/A	N/A	SFP-10G-SR	SFP-10G-LR	SFP-10G-Copper	N/A
EX2028-P	SFP-1G-SX	SFP-1G-LX	SFP-1G-Copper	N/A	N/A	N/A	N/A	SFP-10G-SR	SFP-10G-LR	SFP-10G-Copper	N/A
EX2016M-P	SFP-1G-SX	SFP-1G-LX	SFP-1G-Copper	N/A	N/A	N/A	N/A	SFP-10G-SR	SFP-10G-LR	SFP-10G-Copper	N/A
EX2052	SFP-1G-SX	SFP-1G-LX	SFP-1G-Copper	N/A	N/A	N/A	N/A	SFP-10G-SR	SFP-10G-LR	SFP-10G-Copper	N/A
EX2052-P	SFP-1G-SX	SFP-1G-LX	SFP-1G-Copper	N/A	N/A	N/A	N/A	SFP-10G-SR	SFP-10G-LR	SFP-10G-Copper	N/A
EX2052R-P	SFP-1G-SX	SFP-1G-LX	SFP-1G-Copper	N/A	N/A	N/A	N/A	SFP-10G-SR	SFP-10G-LR	SFP-10G-Copper	N/A
cnRanger RRH 2 and 3 GHz	SFP-1G-SX	N/A	N/A	N/A	N/A	N/A	N/A	N/A	N/A	N/A	N/A
cnRanger Sierra 800 BBU	SFP-1G-SX	N/A	N/A	N/A	N/A	N/A	N/A	SFP-10G-SR	SFP-10G-LR	SFP-10G-Copper	N/A

### ABOUT CAMBIUM NETWORKS

Cambium Networks empowers millions of people with wireless connectivity worldwide. Its wireless portfolio is used by commercial and government network operators as well as broadband service providers to connect people, places and things. With a single network architecture spanning fixed wireless and Wi-Fi, Cambium Networks enables operators to achieve maximum performance with minimal spectrum. End-to-end cloud management transforms networks into dynamic environments that evolve to meet changing needs with minimal physical human intervention. Cambium Networks empowers a growing ecosystem of partners who design and deliver gigabit wireless solutions that just work.