

IDEAL FOR  
CCTV  
INSTALLS

# BT5910

## DOMED SECURITY CAMERA MOUNT FOR Ø38MM POLES

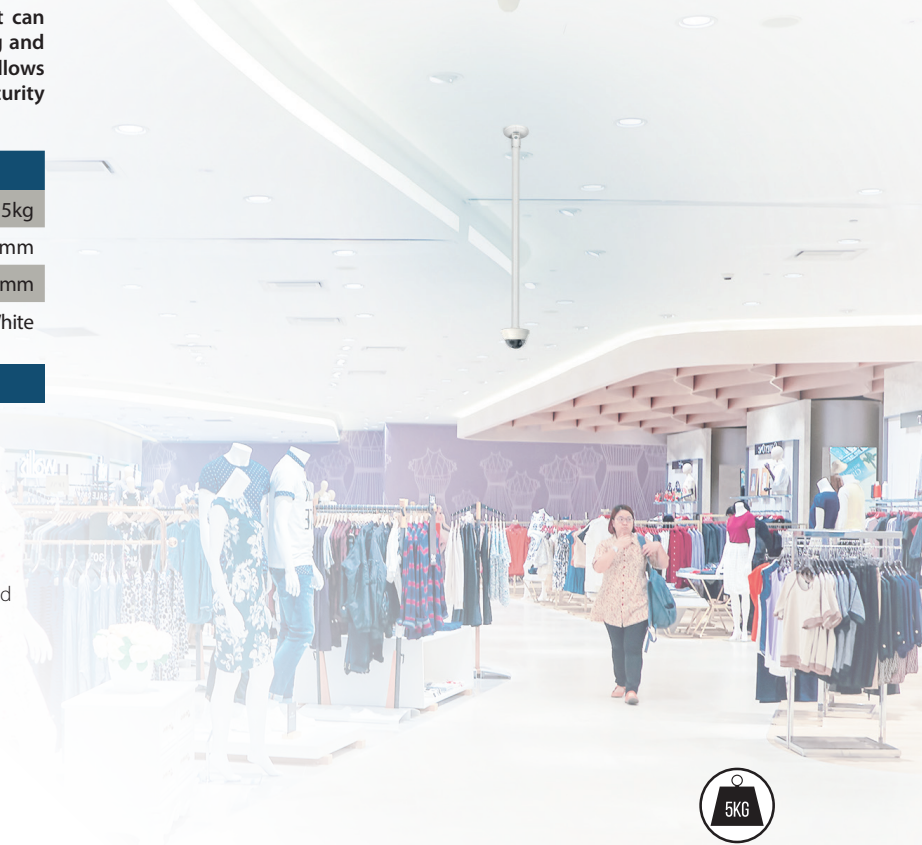
The BT5910 is a CCTV dome camera mount from B-Tech's System V Range; a collection of components designed for the installation of CCTV and other ceiling mounted equipment. Designed for use with BT5935 ø38mm poles, the mount can support a small to medium-sized dome camera up to 5kg and when used with other parts from the System V Range, allows professionals to customise their ceiling mounted security solutions to their specific requirement.

### SPECIFICATION

Maximum load	5kg
Camera fixings dimensions	51mm - 127.5mm
Camera plate diameter	144mm
Colour	White

### FEATURES

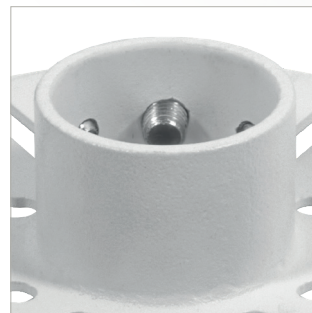
- Mount a small to medium sized dome camera to the end of a BT5935 ø38mm pole
- Carousel suitable for cameras with fixings from 51mm to 127.5mm apart
- Grub screws allow micro-adjustment of the mount to ensure camera sits level
- Safety bolt ensures pole and camera mount are securely joined
- Integrated cable management allows cables to pass through the centre of the mount
- Create a variety of ceiling mounted CCTV installs using System V's range of components



Attaches directly to **BT5935** ø38mm poles



Multiple mounting points for small / medium domed CCTV security cameras



Safety bolt ensures pole and camera mount are securely joined



Complete off-the-shelf kits also available (image shows BT5960-FD100)

