

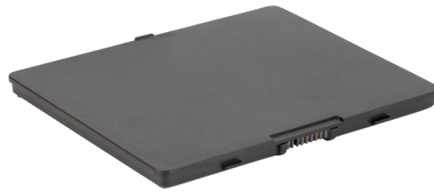
# POWER AND BATTERIES



RT10-PWR

### RT10 Power Supply

Spare power supply. 100–240V AC to 19V DC at 3.42A. Requires country-specific cord.



RT10-BAT-STD1

### RT10 Standard Battery

Spare standard battery: 7.7 V, 5140 mAh Li-Polymer battery. 276 g (9.7 oz) weight, 11 mm (0.4 in) thick.



RT10-BAT-EXT1

### RT10 Extended Battery

Spare extended battery. 7.4V, 10280 mAh Li-Polymer battery. 474 g (16.7 oz) weight, 16.5 mm (0.6 in) thick.

# POWER CABLES / ADAPTERS



RT10-PWR-CABLE

### RT10-PWR-CABLE-EU

C6 type power cable, Europe

### RT10-PWR-CABLE-DMK

C6 type power cable, Denmark 3-pin

### RT10-PWR-CABLE-ITA

C6 type power cable, Italy 3-pin

### RT10-PWR-CABLE-UK

C6 type power cable, UK 3-blade

### RT10-PWR-CABLE-SWI

C6 type power cable, Switzerland 3-pin

### RT10-PWR-CABLE-AUS

C6 type power cable, Australia

### RT10-PWR-CABLE-US

C6 type power cable, United States

### RT10-PWR-CABLE-IND

C6 type power cable, India

### RT10-PWR-CABLE-CN

C6 type power cable, China

### RT10-PWR-CABLE-SA

C6 type power cable, South Africa



RT10-VM-POWER-CVRT

Adapter cable to convert Thor VM series power supply connections to the RT10-VD or RT10-VC 3-pin terminal block power input.



RT10-IGNITION-CABLE

### RT10 Ignition Cable

Directs power to RT10-EVC or RT10-EVD Docks on forklifts that do not use separate ignition control (powered directly). If the forklift install uses ignition control, this bypass adapter cable is not required.

# CHARGERS



RT10-BC-2

### RT10 2-Bay Battery Charger

2-bay battery charger for standard or extended batteries. 12–19V DC in power. Standard battery charges in 3 hours, extended battery charges in 6 hours.

**Kit includes:** 1x 2-bay battery charger, 1x 19V AC adapter. Requires country-specific cord.



RT10-MC

### RT10 Vehicle Charger with Cigarette Header

Vehicle charger/cigarette lighter adapter. 11–32V DC in, 19V/3.42A DC out.