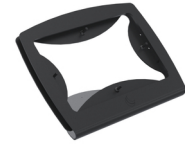


Ergonomic Solutions TabPOS Tablet & mPOS SPCF800-02 tablet security enclosure 25.6 cm (10.1") Black



Brand : Ergonomic Solutions **Product family:** TabPOS Tablet & mPOS **Product code:** SPCF800-02

Product name : SPCF800-02

- Designed for Samsung Galaxy 10,1" + Tab S6 Lite 10,4" w. hinge mount
 - Elegant and functional design
 - Versatile and configurable
 - Quick and tool-free setup
 - 5-year warranty
- C-Frame for Samsung Galaxy 10,1" + Tab S6 Lite 10,4" w. hinge mount

[Ergonomic Solutions TabPOS Tablet & mPOS SPCF800-02 tablet security enclosure 25.6 cm \(10.1"\) Black:](#)

SpacePole TabPOS C-Frame for Samsung Galaxy 10,1" + Tab S6 Lite 10,4" w. hinge mount is an elegant, flexible tablet mount.

Ideal for retail or hospitality environments, it's easy to set up without tools, providing secure mounting, flexibility, and featuring a 5-year warranty.

Ergonomic Solutions TabPOS Tablet & mPOS SPCF800-02. Maximum screen size: 25.6 cm (10.1"), Compatibility: Galaxy Tab A, Galaxy Tab S ; SM-T510 (Wi-Fi), SM-T515 (LTE), SM-P610 (Wi-Fi) , SM-P615 (LTE), Product colour: Black. Width: 293.3 mm, Depth: 152.3 mm, Height: 165.1 mm. Package width: 318 mm, Package depth: 264 mm, Package height: 214 mm

Features		Packaging data	
Maximum screen size *	25.6 cm (10.1")	Package depth	264 mm
Product colour	Black	Package height	214 mm
Material	Metal	Package weight	1.5 kg
Compatibility *	Galaxy Tab A, Galaxy Tab S ; SM-T510 (Wi-Fi), SM-T515 (LTE), SM-P610 (Wi-Fi) , SM-P615 (LTE)	Packaging content	
Colour group	Black	Screws included	✓
Lock type	Security screw	Number of screws	1
Weight & dimensions		Technical details	
Width	293.3 mm	Pallet net height	174 cm
Depth	152.3 mm	Pallet net length	120 cm
Height	165.1 mm	Pallet net width	80 cm
Weight	1.43 kg	Pallet net weight	137.6 kg
Packaging data		Compliance certificates	REACH, RoHS
Package width	318 mm	Version	1.1
		Logistics data	
		Harmonized System (HS) code	8473308000

Disclaimer. The information published here (the "Information") is based on sources that can be considered reliable, typically the manufacturer, but this Information is provided "AS IS" and without guarantee of correctness or completeness. The Information is only indicative and can be changed at any time without notification. No rights can be based on the Information. Suppliers or aggregators of this Information do not accept any liability with regard to the content of (web)pages and other documents, including its Information. The publisher of the Information can not be held liable for the content of 3rd party websites that are linking this Information or are linked to from this Information. You as the User of the Information are solely responsible for the choice and usage of this Information. You are not entitled to transfer, copy or otherwise multiply or distribute the Information. You are obliged to follow the directions of the copyright owner(s) with regard to the use of the Information. Exclusively Dutch law is applicable. With regard to price and stock data on the site, the publisher followed a number of starting points, which are not necessarily relevant for your private or business circumstances. Therefore, the price and stock data are only indicative and are subject to changes. You are personally responsible for the way you use and apply this information. As a user of the Information or sites or documents in which this Information is included, you will adhere to standard fair use including avoidance of spamming, ripping, intellectual-property violations, privacy violations, and any other illegal activity.

Publication date: 23-DEC-2024. Prints or copies of Information are only valid on the printed Publication date