



PF-310

PARTS LIST

Published in October 2006

5H3PL072

845H3122

Rev.2

NOTES

1. Indicate parts number and machine model when placing an order.

e.g.	Parts Number	Parts Name	Machine Model	Frequency	Quantity
	305H380160	GID-U	PF-310	50 / 60Hz	1

2. Service calls and freight will be charged separately.

3. Symbols in the "Parts Number" column.

- Parts with "•" are component parts or sub-assemblies of the assembly appearing immediately above them.

e.g.	Parts Number	Parts Name	Parts Number	Parts Name
	305H380400	ASY-BKT-MOT	•305H280440	RUB-BKT
			•305H280450	RLMC-05T V0

- Parts with "⊙" indicate the spare parts and the parts without "⊙" can not be supplied.

—— CONTENTS ——

FIG. 1	Paper Feed I	2
FIG. 2	Paper Feed II	4
FIG. 3	Paper Feed III	6
	• INDEX	8

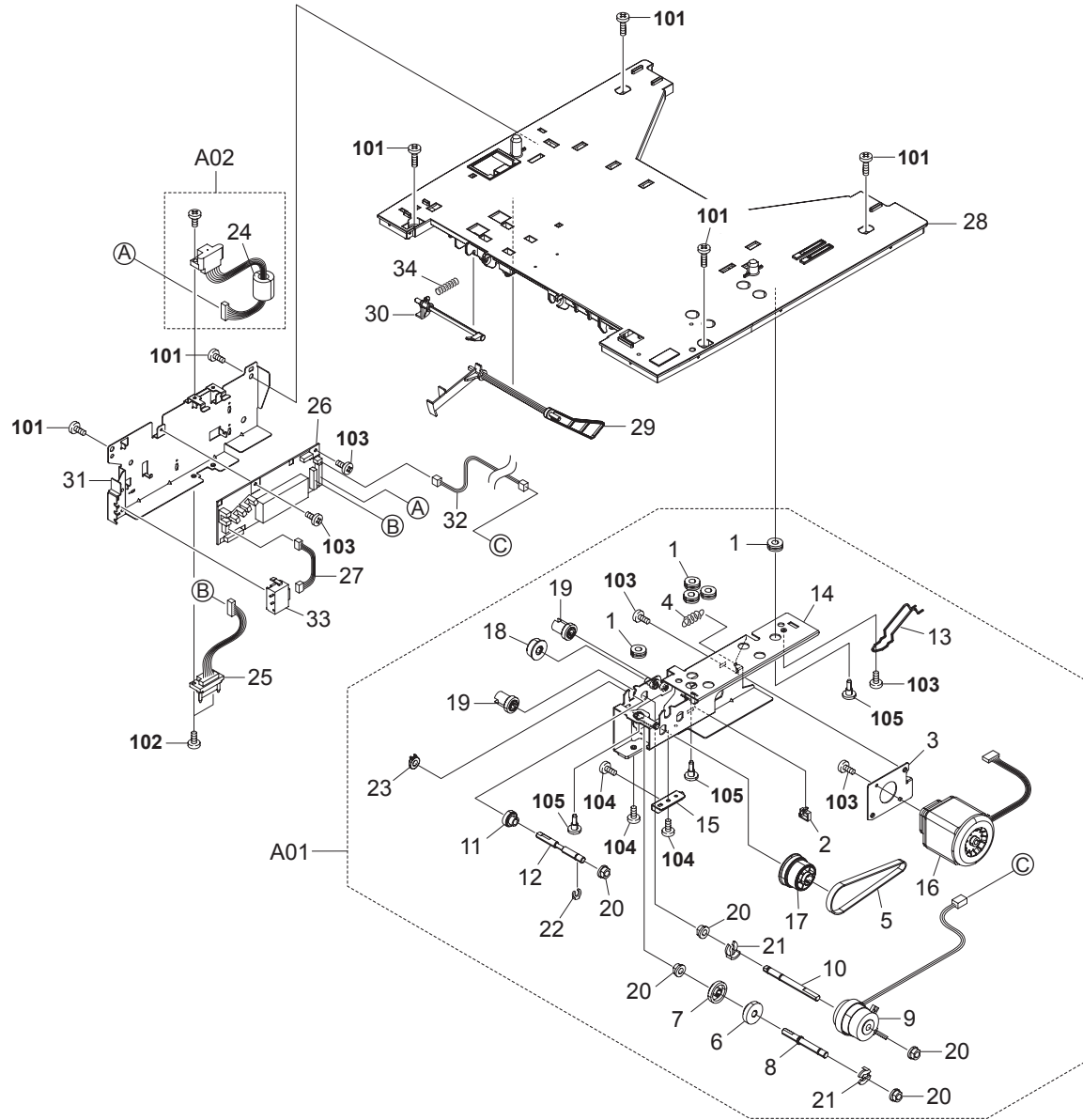


FIG. 1 Paper Feed I

5H3-2

SP	Ref. No.	Part.No.	Alternative.	Description	Quantity				SP	Ref. No.	Part.No.	Alternative.	Description	Quantity			
					110	120	230	240						110	120	230	240
⊙	A01	305H380400	5H380400	ASY-BKT-MOT	1	1	1	1	⊙	101	305H280160	5H280160	SCR04T120WAVE-W				
⊙	1	*305H280440	5H280440	RUB-BKT	5	5	5	5	⊙	102	305H280360	5H280360	SCR-030-080WTP				
⊙	2	*305H280450	5H280450	RLMC-05T V0	1	1	1	1	⊙	103	305H280390	5H280390	SCR03M060-WS-W				
⊙	3	*305H280470	5H280470	BKT-MOT-TEN	1	1	1	1	⊙	104	305H280430	5H280430	SCR-030-060WTP				
⊙	4	*305H280480	5H280480	SPG-TEN	1	1	1	1	⊙	105	305H280640	5H280640	SCR-M4-10-DAN				
⊙	5	*305H280500	5H280500	BELTS2M112060	1	1	1	1									
⊙	6	*305H280520	5H280520	GER-0.8-25-OW	1	1	1	1									
⊙	7	*305H280530	5H280530	H-GER-06-30	1	1	1	1									
⊙	8	*305H280540	5H280540	SFT-OW	1	1	1	1									
⊙	9	*305H280550	5H280550	CLU-BL-3-176	1	1	1	1									
⊙	10	*305H280560	5H280560	SFT-CL	1	1	1	1									
⊙	11	*305H280580	5H280580	H-GER-06-21	1	1	1	1									
⊙	12	*305H280590	5H280590	SFT-JOINT	1	1	1	1									
⊙	13	*305H280620	5H280620	SPG-EARTH-PF	1	1	1	1									
⊙	14	*305H380230	5H380230	BKT-MOT	1	1	1	1									
⊙	15	*305H380240	5H380240	BKT-MOT-SB	1	1	1	1									
⊙	16	*305H380250	5H380250	MOT-KH42JM2B213-ASY	1	1	1	1									
⊙	17	*305H380260	5H380260	PLY-S2M-48-G08-32	1	1	1	1									
⊙	18	*305H380540	5H380540	GEAR-045-34	1	1	1	1									
⊙	19	*305H380550	5H380550	GEAR-045-30	2	2	2	2									
⊙	20	*5AA08360	5AA08360	BUSH-6P	5	5	5	5									
⊙	21	*5FG11770	5FG11770	CLIP	2	2	2	2									
⊙	22	*5FG13430	5FG13430	CLIP	1	1	1	1									
⊙	23	*5SNSP0013698	3DD02290	BUSH 6 CLAMP	1	1	1	1									
⊙	A02	305H280330	5H280330	ASM-I/F-IN	1	1	1	1									
⊙	24	*305H380570	5H380570	SFT-36SN	1	1	1	1									
⊙	25	305H280350	5H280350	ASM-I/F-OUT	1	1	1	1									
⊙	26	305H280380	5H280380	PBA-CONTROL-ASY	1	1	1	1									
⊙	27	305H280400	5H280400	ASM-SW	1	1	1	1									
⊙	28	305H380160	5H380160	GID-U	1	1	1	1									
⊙	29	305H380190	5H380190	LVR-SEN-LEV	1	1	1	1									
⊙	30	305H380200	5H380200	LVR-EXIT	1	1	1	1									
⊙	31	305H380210	5H380210	BKT-PBA	1	1	1	1									
⊙	32	305H380220	5H380220	ASM-CLUTCH-A4	1	1	1	1									
⊙	33	5FSP03090001+01	SP0A0360	PUSH SWITCH 03 SN	1	1	1	1									
⊙	34	5SNSP0013815	3DD02460	SPRING EXIT	1	1	1	1									

- Parts with "*" are component parts or sub-assemblies of the assembly appearing immediately above them.
- Parts with "⊙" indicate the spare parts.

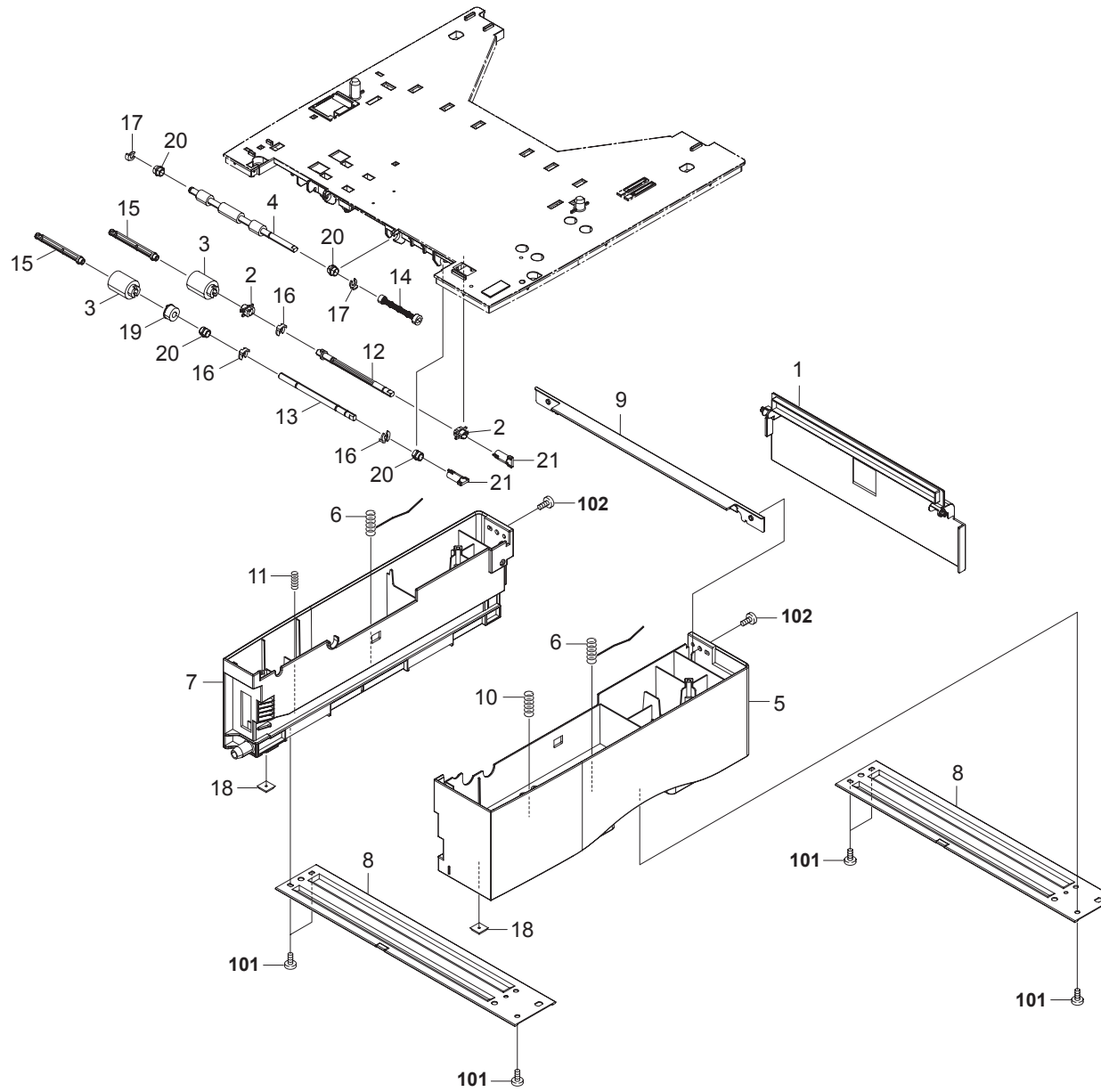


FIG. 2 Paper Feed II

5H3-2

SP	Ref. No.	Part.No.	Alternative.	Description	Quantity			
					110	120	230	240
⊙	1	302F909240	2F909240	LID CASSETTE	1	1	1	1
⊙	2	305H280230	5H280230	BUSH-6-T	2	2	2	2
⊙	3	305H280280	5H280280	P-ROLL	2	2	2	2
⊙	4	305H280290	5H280290	ROL-H	1	1	1	1
⊙	5	305H380090	5H380090	FRM-R	1	1	1	1
⊙	6	305H380100	5H380100	SPG-EARTH-STY	2	2	2	2
⊙	7	305H380110	5H380110	FRM-L	1	1	1	1
⊙	8	305H380120	5H380120	STY	2	2	2	2
⊙	9	305H380130	5H380130	STY-R	1	1	1	1
⊙	10	305H380140	5H380140	SPG-EARTH-MOT	1	1	1	1
⊙	11	305H380150	5H380150	SPG-EARTH-PBA	1	1	1	1
⊙	12	305H380170	5H380170	SFT-P-ROL	1	1	1	1
⊙	13	305H380180	5H380180	SFT-BH-ROL	1	1	1	1
⊙	14	305H380270	5H380270	JNT-H	1	1	1	1
⊙	15	3FW02590	5SNSP0014010	SHAFT HOLDER	2	2	2	2
⊙	16	5FG11770	5FG11770	CLIP	3	3	3	3
⊙	17	5FG13430	5FG13430	CLIP	2	2	2	2
⊙	18	5MVX221RB014	2BS03110	FOOT	2	2	2	2
⊙	19	5SNSP0013689	3DD22200	GEAR Z28	1	1	1	1
⊙	20	5SNSP0013695	3DD02260	BUSH 6	4	4	4	4
⊙	21	5SNSP0013697	3DD02280	CUPLING PICKUP FEED	2	2	2	2

SP	Ref. No.	Part.No.	Alternative.	Description	Quantity			
					110	120	230	240
⊙	101	305H280160	5H280160	SCR04T120WAVE-W				
⊙	102	305H281010	5H281010	SCR-040-060				

- Parts with "*" are component parts or sub-assemblies of the assembly appearing immediately above them.
- Parts with "⊙" indicate the spare parts.

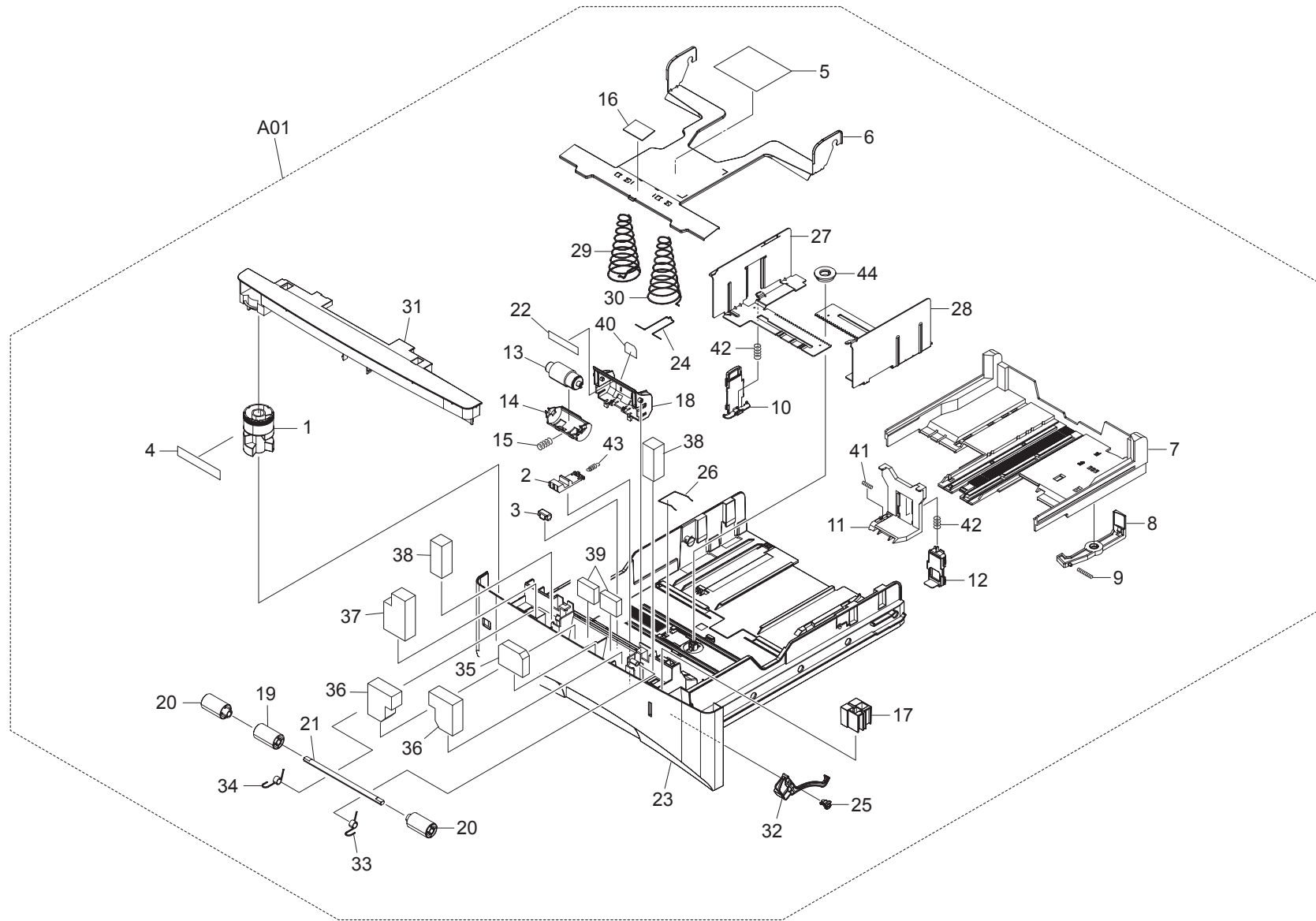


FIG. 3 Paper Feed III

5H3-2

SP	Ref. No.	Part.No.	Alternative.	Description	Quantity			
					110	120	230	240
⊙	A01	305H393020	5H393020	CT-311(U)	1	1		
⊙	A01	305H393010	5H393010	CT-311(E)	1	1	1	1
	1	*2BZ06070	5MVM686SH001	DIAL CASSETTE	1	1	1	1
⊙	2	*305H380620	5H380620	LOCK-BOTTOM	1	1	1	1
	3	*302F809030	2F809030	STOPPER A5	1	1	1	1
	4	*302F809050	2F809050	LABEL DIAL	1	1	1	1
	5	*302F809060	2F809060	LABEL OPERATION	1	1	1	1
	6	*302F809071	2F809071	PLATE BOTTOM	1	1	1	1
	7	*302F909020	2F909020	BASE CASSETTE REAR	1	1	1	1
	8	*302F909031	2F909031	LEVER BASE CAS REAR	1	1	1	1
	9	*302F909040	2F909040	SPRING BASE CAS REAR	1	1	1	1
	10	*302F909070	2F909070	LEVER SIDE CURSOR	1	1	1	1
	11	*302F909080	2F909080	CURSOR END	1	1	1	1
	12	*302F909090	2F909090	LEVER END CURSOR	1	1	1	1
⊙	13	*302F909170	2F909170	RETARD ROLLER ASSY	1	1	1	1
	14	*302F909180	2F909180	HOLDER RETARD	1	1	1	1
	15	*302F909200	2F909200	SPRING RETARD	1	1	1	1
	16	*302F909210	2F909210	PAD BOTTOM	1	1	1	1
	17	*302F909260	2F909260	MARKER INDICATOR	1	1	1	1
	18	*305H280740	5H280740	GUDE-RETARD	1	1	1	1
⊙	19	*305H280760	5H280760	ROL-CENTER	1	1	1	1
⊙	20	*305H280770	5H280770	ROL-SIDE	2	2	2	2
⊙	21	*305H280780	5H280780	SFT-ROL	1	1	1	1
	22	*305H280920	5H280920	CUSH-RETARD	1	1	1	1
	23	*305H380280	5H380280	BAS-CAS	1	1	1	1
	24	*305H380290	5H380290	SP-SIZE-FIX	1	1	1	1
	25	*305H380300	5H380300	CENTER-INDICATOR	1	1	1	1
	26	*305H380310	5H380310	SP-EARTH-CURSOR	1	1	1	1
	27	*305H380320	5H380320	CURSOR-LEFT	1	1	1	1
	28	*305H380330	5H380330	CURSOR-RIGHT	1	1	1	1
	29	*305H380340	5H380340	SP-BTM-L	1	1	1	1
	30	*305H380350	5H380350	SP-BTM-R	1	1	1	1
	31	*305H380370	5H380370	CVR-CAS-TOP	1	1	1	1
⊙	32	*305H380420	5H380420	LVR-INDICATOR	1	1	1	1
	33	*305H380430	5H380430	SPG-R	1	1	1	1
	34	*305H380440	5H380440	SPG-L	1	1	1	1
	35	*305H380480	5H380480	SPNG-94-C	1	1	1	1
	36	*305H380490	5H380490	SPNG-94-LR	2	2	2	2
	37	*305H380500	5H380500	SPNG-94-LL	1	1	1	1
	38	*305H380510	5H380510	SPNG-94-RS	2	2	2	2
	39	*305H380520	5H380520	SPNG-94-RC	2	2	2	2
	40	*305H380530	5H380530	MLR-RETARD	1	1	1	1
	41	*5MMW151SD003	2BS06100	SPRING END	1	1	1	1
	42	*5MMW166LD010	2B700070	SPRING LOCK GUIDE	2	2	2	2
	43	*5MMW251LD048	2BS06150	SP STOPPER BOTTOM	1	1	1	1
	44	*5MVG127DB046	2B700190	GEAR CASSETTE	1	1	1	1

• Parts with "*" are component parts or sub-assemblies of the assembly appearing immediately above them.

• Parts with "⊙" indicate the spare parts.

INDEX

5H3-2

SP	Part.No.	Alternative.	Description	Fig.No.
	2BZ06070	5MVM686SH001	DIAL CASSETTE	3
	302F809030	2F809030	STOPPER A5	3
	302F809050	2F809050	LABEL DIAL	3
	302F809060	2F809060	LABEL OPERATION	3
	302F809071	2F809071	PLATE BOTTOM	3
	302F909020	2F909020	BASE CASSETTE REAR	3
	302F909031	2F909031	LEVER BASE CAS REAR	3
	302F909040	2F909040	SPRING BASE CAS REAR	3
	302F909070	2F909070	LEVER SIDE CURSOR	3
	302F909080	2F909080	CURSOR END	3
	302F909090	2F909090	LEVER END CURSOR	3
⊙	302F909170	2F909170	RETARD ROLLER ASSY	3
	302F909180	2F909180	HOLDER RETARD	3
	302F909200	2F909200	SPRING RETARD	3
	302F909210	2F909210	PAD BOTTOM	3
⊙	302F909240	2F909240	LID CASSETTE	2
	302F909260	2F909260	MARKER INDICATOR	3
⊙	305H280230	5H280230	BUSH-6-T	2
⊙	305H280280	5H280280	P-ROLL	2
⊙	305H280290	5H280290	ROL-H	2
⊙	305H280330	5H280330	ASM-I/F-IN	1
⊙	305H280350	5H280350	ASM-I/F-OUT	1
⊙	305H280380	5H280380	PBA-CONTROL-ASY	1
⊙	305H280400	5H280400	ASM-SW	1
⊙	305H280440	5H280440	RUB-BKT	1
⊙	305H280450	5H280450	RLMC-05T V0	1
⊙	305H280470	5H280470	BKT-MOT-TEN	1
⊙	305H280480	5H280480	SPG-TEN	1
⊙	305H280500	5H280500	BELTS2M112060	1
⊙	305H280520	5H280520	GER-0.8-25-OW	1
⊙	305H280530	5H280530	H-GER-06-30	1
⊙	305H280540	5H280540	SFT-OW	1
⊙	305H280550	5H280550	CLU-BL-3-176	1
⊙	305H280560	5H280560	SFT-CL	1
⊙	305H280580	5H280580	H-GER-06-21	1
⊙	305H280590	5H280590	SFT-JOINT	1
⊙	305H280620	5H280620	SPG-EARTH-PF	1
	305H280740	5H280740	GUDE-RETARD	3
⊙	305H280760	5H280760	ROL-CENTER	3
⊙	305H280770	5H280770	ROL-SIDE	3
⊙	305H280780	5H280780	SFT-ROL	3
⊙	305H280920	5H280920	CUSH-RETARD	3
⊙	305H380090	5H380090	FRM-R	2
⊙	305H380100	5H380100	SPG-EARTH-STY	2
⊙	305H380110	5H380110	FRM-L	2
⊙	305H380120	5H380120	STY	2
⊙	305H380130	5H380130	STY-R	2
⊙	305H380140	5H380140	SPG-EARTH-MOT	2
⊙	305H380150	5H380150	SPG-EARTH-PBA	2
⊙	305H380160	5H380160	GID-U	1

SP	Part.No.	Alternative.	Description	Fig.No.
⊙	305H380170	5H380170	SFT-P-ROL	2
⊙	305H380180	5H380180	SFT-BH-ROL	2
⊙	305H380190	5H380190	LVR-SEN-LEV	1
⊙	305H380200	5H380200	LVR-EXIT	1
⊙	305H380210	5H380210	BKT-PBA	1
⊙	305H380220	5H380220	ASM-CLUTCH-A4	1
⊙	305H380230	5H380230	BKT-MOT	1
⊙	305H380240	5H380240	BKT-MOT-SB	1
⊙	305H380250	5H380250	MOT-KH42JM2B213-ASY	1
⊙	305H380260	5H380260	PLY-S2M-48-G08-32	1
⊙	305H380270	5H380270	JNT-H	2
	305H380280	5H380280	BAS-CAS	3
	305H380290	5H380290	SP-SIZE-FIX	3
	305H380300	5H380300	CENTER-INDICATOR	3
	305H380310	5H380310	SP-EARTH-CURSOR	3
	305H380320	5H380320	CURSOR-LEFT	3
	305H380330	5H380330	CURSOR-RIGHT	3
	305H380340	5H380340	SP-BTM-L	3
	305H380350	5H380350	SP-BTM-R	3
⊙	305H380370	5H380370	CVR-CAS-TOP	3
⊙	305H380400	5H380400	ASY-BKT-MOT	1
⊙	305H380420	5H380420	LVR-INDICATOR	3
	305H380430	5H380430	SPG-R	3
	305H380440	5H380440	SPG-L	3
	305H380480	5H380480	SPNG-94-C	3
	305H380490	5H380490	SPNG-94-LR	3
	305H380500	5H380500	SPNG-94-LL	3
	305H380510	5H380510	SPNG-94-RS	3
	305H380520	5H380520	SPNG-94-RC	3
	305H380530	5H380530	MLR-RETARD	3
⊙	305H380540	5H380540	GEAR-045-34	1
⊙	305H380550	5H380550	GEAR-045-30	1
	305H380570	5H380570	SFT-36SN	1
⊙	305H380620	5H380620	LOCK-BOTTOM	3
⊙	305H393010	5H393010	CT-311(E)	3
⊙	305H393020	5H393020	CT-311(U)	3
⊙	305H393030	5H393030	CT-311(J)	3
⊙	3FW02590	5SNSP0014010	SHAFT HOLDER	2
⊙	5AA08360	5AA08360	BUSH-6P	1
⊙	5FG11770	5FG11770	CLIP	1,2
⊙	5FG13430	5FG13430	CLIP	1,2
⊙	5FSP03090001+01	SP0A0360	PUSH SWITCH 03 SN	1
	5MMW151SD003	2BS06100	SPRING END	3
	5MMW166LD010	2B700070	SPRING LOCK GUIDE	3
	5MMW251LD048	2BS06150	SP STOPPER BOTTOM	3
	5MVG127DB046	2B700190	GEAR CASSETTE	3
⊙	5MVX221RB014	2BS03110	FOOT	2
⊙	5SNSP0013689	3DD22200	GEAR Z28	2
⊙	5SNSP0013695	3DD02260	BUSH 6	2
⊙	5SNSP0013697	3DD02280	CUPLING PICKUP FEED	2
⊙	5SNSP0013698	3DD02290	BUSH 6 CLAMP	1
⊙	5SNSP0013815	3DD02460	SPRING EXIT	1

• Parts with "⊙" indicate the spare parts.

KYOCERA MITA EUROPE B.V.

Hoeksteen 40, 2132 MS Hoofddorp,
The Netherlands
Phone: +31.20.654.0000
Home page: <http://www.kyoceramita-europe.com>
Email: info@kyoceramita-europe.com

KYOCERA MITA NEDERLAND B.V.
Beechavenue 25,1119RA Schiphol-Rijk
The Netherlands
Phone: +31.20.58.77.200

KYOCERA MITA (UK) LTD
8 Beacontree Plaza
Gillette Way Reading Berks RG2 OBS,
U.K.
Phone: +44.1189.311.500

KYOCERA MITA ITALIA S.p.A.
Via G. Verdi, 89 / 91, 20063 Cernusco s/N
Milano, Italy
Phone: +39.02.92179.1

S.A. KYOCERA MITA BELGIUM N.V.
Hermesstraat 8A,1930 Zaventem,
Belgium
Phone: +32.2.720.9270

KYOCERA MITA FRANCE S.A.
Parc Les Algorithmes Saint Aubin
91194 GIF-SUR-YVETTE,
France
Phone: +33.1.6985.2600

KYOCERA MITA ESPAÑA S.A.
Edificio Kyocera, Avda de Manacor No. 2,
28290 Las Matas (Madrid),
Spain
Phone: +34.91.631.8392

KYOCERA MITA FINLAND OY
Kirvesmiehenkatu 4, 00880 Helsinki,
Finland
Phone: +358.9.4780.5200

KYOCERA MITA (SCHWEIZ)
Hohlstrasse 614, 8048 Zürich
Switzerland
Phone: +41.1.908.4949

KYOCERA MITA DEUTSCHLAND GMBH
Mollsfeld 12,40670 Meerbusch,
Germany
Phone: +49.2159.918.0

KYOCERA MITA GMBH AUSTRIA
Eduard-Kittenberger-Gasse 95,
1230 Wien,
Austria
Phone: +43.1.86338.210

KYOCERA MITA SVENSKA AB
Vretenvägen 2, 6tr, 17 154 Solna,
Sweden
Phone: +46.8.546.55000

KYOCERA MITA NORGE
Postboks 150 Oppsal, NO 0619 Oslo
Olaf Helsetsvai 6, NO 0694 Oslo,
Norway
Phone: +47.22.62.73.00

KYOCERA MITA DANMARK A/S
Ejby Industrivej 1, DK-2600 Glostrup,
Denmark
Phone: +45.5687.1100

KYOCERA MITA PORTUGAL LDA.
Rua do Centro Cultural, 41 (Alvalade) 1700-106 Lisbon,
Portugal
Phone: +351.21.842.9100

KYOCERA MITA SOUTH AFRICA (PTY) LTD.
527 Kyalami Boulevard,
Kyalami Business Park Midrand,
South Africa
Phone: +27.(0)11.540.2600

KYOCERA MITA AMERICA, INC.

Headquarters:
225 Sand Road,
Fairfield, New Jersey 07004-0008,
U.S.A.
Phone: (973) 808-8444

KYOCERA MITA AUSTRALIA PTY. LTD.
Level 3, 6-10 Talavera Road, North Ryde,
N.S.W. 2113 Australia
Phone: (02) 9888-9999

KYOCERA MITA NEW ZEALAND LTD.
1-3 Parkhead Place, Albany
P.O. Box 302 125 NHPC, Auckland,
New Zealand
Phone: (09) 415-4517

KYOCERA MITA (THAILAND) CORP., LTD.
9/209 Ratchada-Prachachem Road,
Bang Sue, Bangkok 10800, Thailand
Phone: (02) 586-0320

KYOCERA MITA SINGAPORE PTE LTD.
121 Genting Lane, 3rd Level,
Singapore 349572
Phone: 67418733


KYOCERA MITA HONG KONG LIMITED
11/F., Mita Centre,
552-566, Castle Peak Road,
Tsuen Wan, New Territories,
Hong Kong
Phone: 24297422

KYOCERA MITA TAIWAN Corporation.
7F-1~2, No.41, Lane 221, Gangchi Rd.
Neihu District, Taipei, Taiwan, 114. R.O.C.
Phone: (02) 87511560

KYOCERA MITA Corporation

2-28, 1-chome, Tamatsukuri, Chuo-ku
Osaka 540-8585, Japan
Phone: (06) 6764-3555
<http://www.kyoceramita.com>

©2006 KYOCERA MITA Corporation

 is a trademark of Kyocera Corporation

KYOCERA MITA AMERICA, INC.

Headquarters:

225 Sand Road,
Fairfield, New Jersey 07004-0008
TEL : (973) 808-8444
FAX : (973) 882-6000

New York Branch:

1410 Broadway 23rd floor
New York, NY 10018
TEL : (917) 286-5400
FAX : (917) 286-5402

Northeastern Region:

225 Sand Road,
Fairfield, New Jersey 07004-0008
TEL : (973) 808-8444
FAX : (973) 882-4401

Midwestern Region:

201 Hansen Court Suite 119
Wood Dale, Illinois 60191
TEL : (630) 238-9982
FAX : (630) 238-9487

Western Region:

14101 Alton Parkway,
Irvine, California 92618-7006
TEL : (949) 457-9000
FAX : (949) 457-9119

Southeastern Region:

1500 Oakbrook Drive,
Norcross, Georgia 30093
TEL : (770) 729-9786
FAX : (770) 729-9873

Southwestern Region:

2825 West Story Road,
Irving, Texas 75038-5299
TEL : (972) 550-8987
FAX : (972) 252-9786

National Operation Center & National Training Center:

2825 West Story Road,
Irving, Texas 75038-5299
TEL : (972) 659-0055
FAX : (972) 570-5816

Latin America Division:

8240 N.W. 52nd. Terrace Dawson Building,
Suite 108 Miami, Florida 33166
TEL : (305) 421-6640
FAX : (305) 421-6666

KYOCERA MITA CANADA, LTD.

6120 Kestrel Road, Mississauga,
Ontario L5T 1S8, Canada
TEL : (905) 670-4425
FAX : (905) 670-8116

KYOCERA MITA MEXICO, S.A. DE C.V.

Av. 16 de Septiembre #407
Col. Santa Inés,
Azcapotzalco México,
D.F. 02130, México
TEL : (55) 5383-2741
FAX : (55) 5383-7804