



FS-1120D

FS-1320D

ECOSYS P2035d

ECOSYS P2135d

PARTS LIST

Published in January 2014

2LZPL072

Rev.2

———— CONTENTS ————

| | | |
|---------|-------------------------------|----|
| FIG. 1 | Covers..... | 2 |
| FIG. 2 | Frames..... | 4 |
| FIG. 3 | Paper Cassette | 6 |
| FIG. 4 | Paper Feed Section 1 | 8 |
| FIG. 5 | Paper Feed Section 2 | 10 |
| FIG. 6 | Image Formation Section | 12 |
| FIG. 7 | Developing Section | 14 |
| FIG. 8 | Fuser Section | 16 |
| FIG. 9 | Drive Section..... | 18 |
| FIG. 10 | Duplex Section | 20 |
| FIG. 11 | Electrical Components | 22 |
| FIG. 12 | Maintenance Kits..... | 24 |
| | • INDEX | 25 |

<Notation of products>

For the purpose of this parts list, products are identified as following.

FS-1120D : 30ppm(A)

FS-1320D : 35ppm(A)

ECOSYS P2035d : 30ppm(B)

ECOSYS P2135d : 35ppm(B)

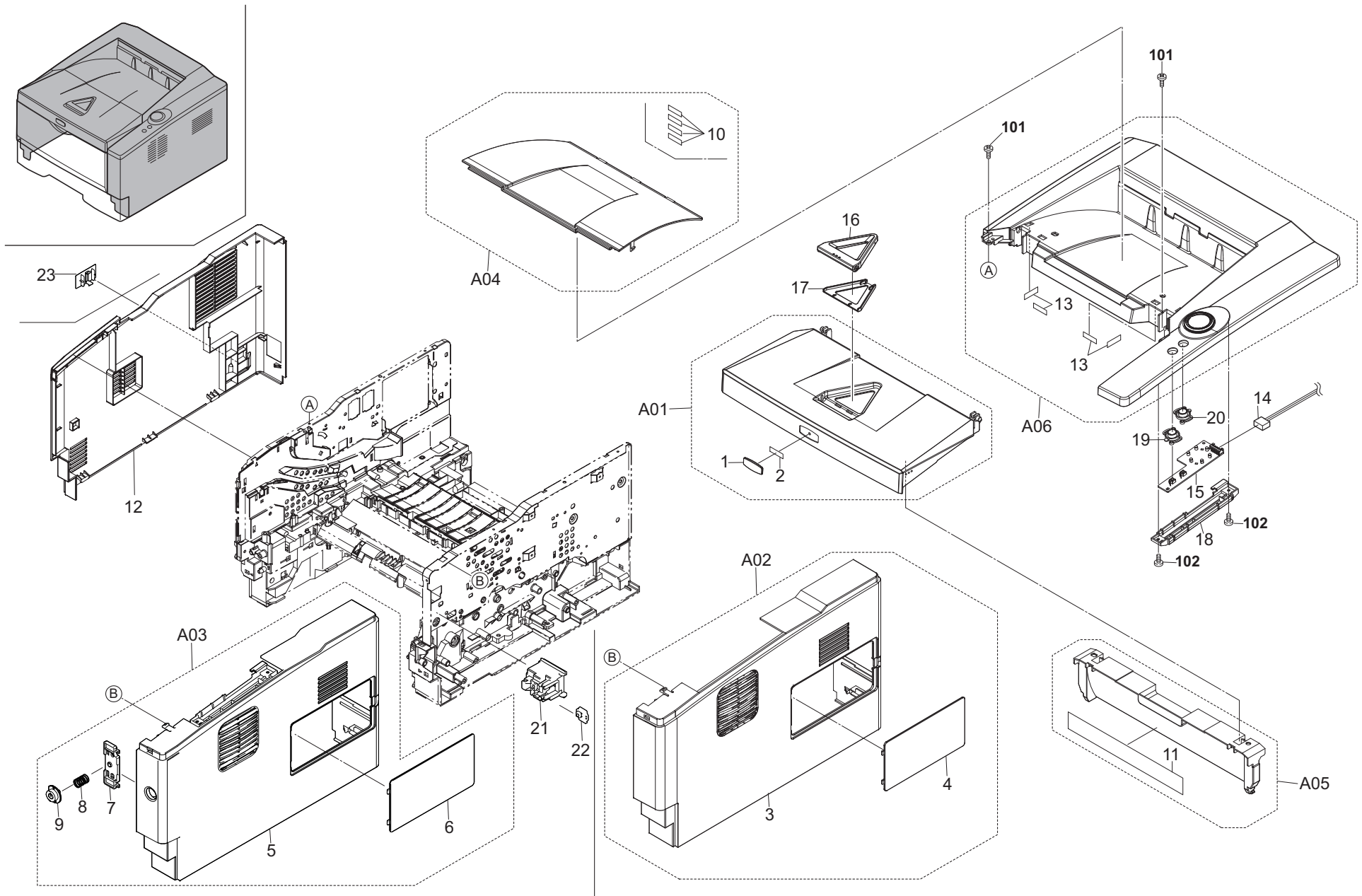


FIG. 1 Covers

2LY/2LZ/2PG/2PH-2

| Ref. No. | Part.No. | Alternative. | Description | Notes | Quantity | | |
|----------|-------------|--------------|-----------------------------------|----------------------|----------|-----|-----|
| | | | | | 120 | 230 | 240 |
| ⊙ A01 | 302HS94020 | 2HS94020 | LID TOP ASSY | | 1 | 1 | 1 |
| 1 | *302F904120 | 2F904120 | EMBLEM KYOCERA | | 1 | 1 | 1 |
| 2 | *302F904130 | 2F904130 | TAPE EMBLEM | | 1 | 1 | 1 |
| ⊙ A02 | 302LY00010 | 2LY00010 | COVER RIGHT ASSY | 30ppm(A) | 1 | 1 | 1 |
| ⊙ A02 | 302LZ00010 | 2LZ00010 | COVER RIGHT ASSY | 35ppm(A) | 1 | 1 | 1 |
| ⊙ A02 | 302PG00020 | 2PG00020 | COVER RIGHT ASSY | 30ppm(B) | 1 | 1 | 1 |
| ⊙ A02 | 302PH00020 | 2PH00020 | COVER RIGHT ASSY | 35ppm(B) | 1 | 1 | 1 |
| 3 | *302LY04010 | 2LY04010 | COVER RIGHT | 30ppm(A) | 1 | 1 | 1 |
| 3 | *302LZ04020 | 2LZ04020 | COVER RIGHT | 35ppm(A) | 1 | 1 | 1 |
| 3 | *302PG04020 | 2PG04020 | COVER RIGHT | 30ppm(B) | 1 | 1 | 1 |
| 3 | *302PH04010 | 2PH04010 | COVER RIGHT | 35ppm(B) | 1 | 1 | 1 |
| 4 | *302LZ04030 | 2LZ04030 | COVER DIMM | | 1 | 1 | 1 |
| ⊙ A03 | 302LY94030 | 2LY94030 | PARTS COVER RIGHT 2 ASSY SP | 30ppm(A) | 1 | | |
| ⊙ A03 | 302LZ94140 | 2LZ94140 | PARTS COVER RIGHT 2 ASSY SP | 35ppm(A) | 1 | | |
| ⊙ A03 | 302PG94010 | 2PG94010 | PARTS COVER RIGHT 2 ASSY SP | 30ppm(B) | 1 | | |
| ⊙ A03 | 302PH94010 | 2PH94010 | PARTS COVER RIGHT 2 ASSY SP | 35ppm(B) | 1 | | |
| 5 | *302LY04020 | 2LY04020 | COVER RIGHT 2 | 30ppm(A) | 1 | | |
| 5 | *302LZ04080 | 2LZ04080 | COVER RIGHT 2 | 35ppm(A) | 1 | | |
| 5 | *302PG04030 | 2PG04030 | COVER RIGHT 2 | 30ppm(B) | 1 | | |
| 5 | *302PH04020 | 2PH04020 | COVER RIGHT 2 | 35ppm(B) | 1 | | |
| 6 | *302LZ04030 | 2LZ04030 | COVER DIMM | | 1 | | |
| 7 | *302LZ04070 | 2LZ04070 | HOLDER KEY SW | | 1 | | |
| 8 | *302F931270 | 2F931270 | SPRING FUSER | | 1 | | |
| 9 | *302LZ04060 | 2LZ04060 | KEY POWER | | 1 | | |
| ⊙ A04 | 302HS94140 | 2HS94140 | COVER TOP B KIT SP | | 1 | 1 | 1 |
| 10 | *302HS04170 | 2HS04170 | SHEET TOP COVER | | 4 | 4 | 4 |
| ⊙ A05 | 302HS94121 | 2HS94121 | COVER FRONT ASSY (2HS) SP | | 1 | 1 | 1 |
| 11 | *302HS34080 | 2HS34080 | LABEL JAM TK OPERATION | | 1 | 1 | 1 |
| ⊙ 12 | 302LZ04011 | 2LZ04011 | COVER LEFT | | 1 | 1 | 1 |
| ⊙ A06 | 302HS94010 | 2HS94010 | COVER TOP ASSY | | 1 | 1 | 1 |
| 13 | *302HS04170 | 2HS04170 | SHEET TOP COVER | | 4 | 4 | 4 |
| 14 | 302HS46230 | 2HS46230 | CONN.CORD ASSY PANEL-RELAY S03353 | | 1 | 1 | 1 |
| 15 | 302HS01030 | 2HS01030 | P.W.B BOARD ASSY PANEL | | 1 | 1 | 1 |
| ⊙ 16 | 302HS04070 | 2HS04070 | COVER RACK | | 1 | 1 | 1 |
| ⊙ 17 | 302HS04160 | 2HS04160 | COVER RACK B | | 1 | 1 | 1 |
| 18 | 302HS04080 | 2HS04080 | COVER PANEL | | 1 | 1 | 1 |
| 19 | 302HS04100 | 2HS04100 | BUTTON ENTER | 30ppm(A) 35ppm(A) | 1 | 1 | 1 |
| | | | | 30ppm(B) 35ppm(B) | 1 | 1 | 1 |
| 20 | 302HS04110 | 2HS04110 | BUTTON CANCEL | | 1 | 1 | 1 |
| 21 | 302LZ04050 | 2LZ04050 | MOUNT PWB SW | | 1 | | |
| ⊙ 22 | 302LZ94180 | 2LZ94180 | PARTS PWB ASSY SWITCH SP | | 1 | | |
| 23 | 302LZ04090 | 2LZ04090 | COVER MAIN SW | | 1 | | |

| Ref. No. | Part.No. | Alternative. | Description | Notes | Quantity | | |
|----------|------------|--------------|------------------------|-------|----------|-----|-----|
| | | | | | 120 | 230 | 240 |
| 101 | 7BB200410H | BB105700 | +BIND T.T P SCREW 4X10 | | | | |
| 102 | 7BB200308H | BB105660 | +BIND T.T P SCREW 3X8 | | | | |

- Parts with "⊙" indicate regular maintenance parts.
- Parts with Ref.No. indicate maintenance parts and the ones without it indicate out of the above.

- Parts with "*" are component parts or sub-assemblies of the assembly appearing immediately above them.
- Parts with "••" are component parts or sub-assembly with "•" appearing immediately above them.

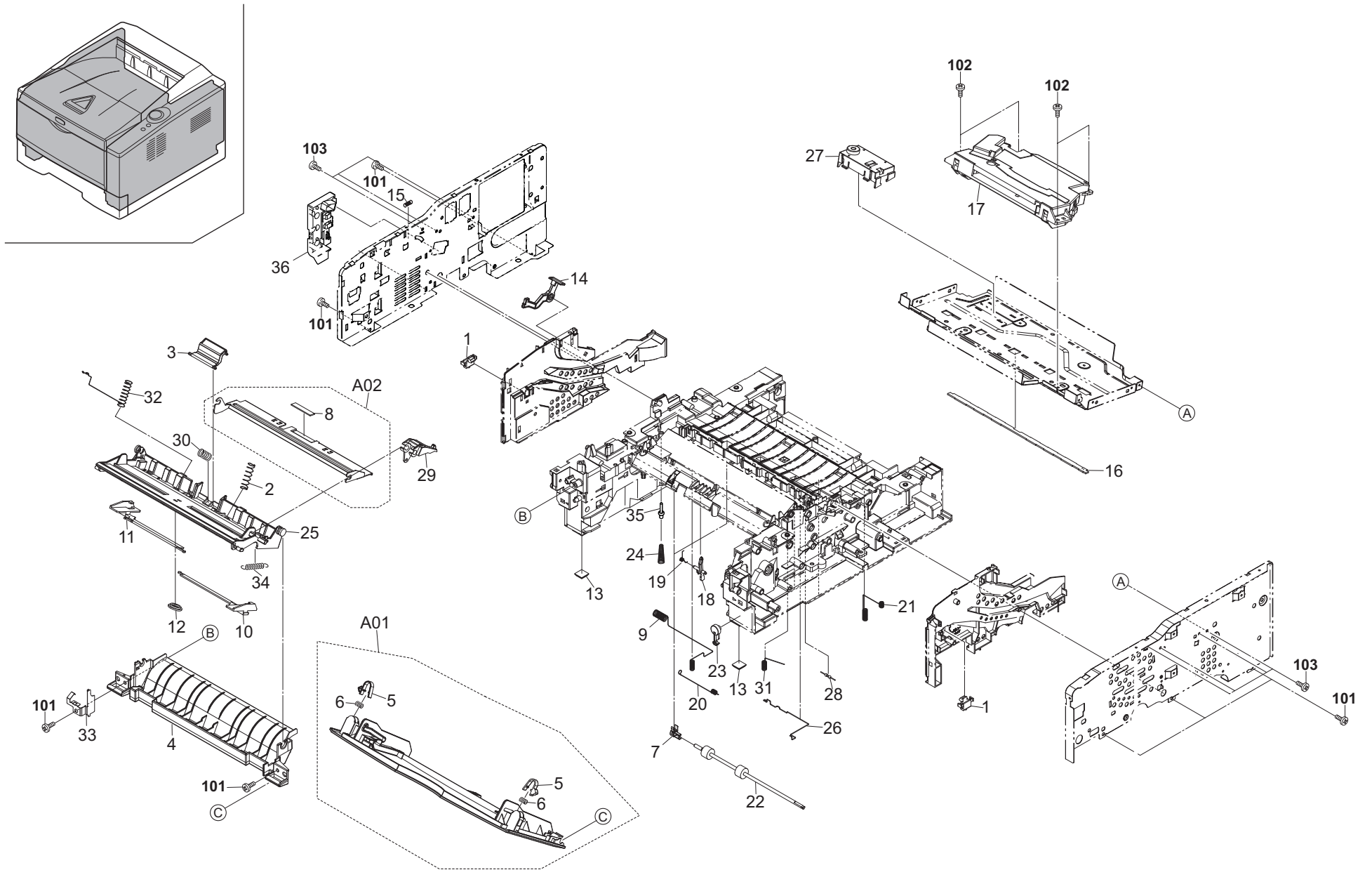


FIG. 2 Frames

2LY/2LZ/2PG/2PH-2

| | Ref. No. | Part.No. | Alternative. | Description | Notes | Quantity | | |
|---|----------|-----------------|--------------|---------------------------|--|----------|-----|-----|
| | | | | | | 120 | 230 | 240 |
| | 1 | 302F902420 | 2F902420 | LOCK COVER TOP R | | 2 | 2 | 2 |
| | 2 | 302F908270 | 2F908270 | SP BOTTOM MPF L | | 1 | 1 | 1 |
| ⊙ | 3 | 302HS94040 | 2HS94040 | SEPARATOR MPF ASSY | | 1 | 1 | 1 |
| | 4 | 302LZ08020 | 2LZ08020 | GUIDE TURN MPF | | 1 | 1 | 1 |
| ⊙ | A01 | 302LZ94090 | 2LZ94090 | PARTS TRAY MPF ASSY SP | | 1 | 1 | 1 |
| | 5 | *302F908200 | 2F908200 | LOCK COVER | | 2 | 2 | 2 |
| | 6 | *302HS08320 | 2HS08320 | SPRING COVER MPF | | 2 | 2 | 2 |
| | 7 | 302HS24130 | 2HS24130 | BUSH 4 DU ROLL | | 2 | 2 | 2 |
| ⊙ | A02 | 302HS94050 | 2HS94050 | PLATE BOTTOM MPF ASSY | | 1 | 1 | 1 |
| | 8 | *302F908310 | 2F908310 | PAD FRICTION MPF | | 1 | 1 | 1 |
| | 9 | 302HS02160 | 2HS02160 | SPRING MC | | 1 | 1 | 1 |
| | 10 | 302HS08241 | 2HS08241 | GUIDE MPF R | | 1 | 1 | 1 |
| | 11 | 302HS08251 | 2HS08251 | GUIDE MPF L | | 1 | 1 | 1 |
| | 12 | 5MVG137DN032 | 2A806720 | GEAR MPF /A-49 MPF A4 | | 1 | 1 | 1 |
| ⊙ | 13 | 302J002010 | 2J002010 | FOOT | | 2 | 2 | 2 |
| ⊙ | 14 | 302HS02090 | 2HS02090 | LEVER STOPPER DLP | | 1 | 1 | 1 |
| | 15 | 302HS02100 | 2HS02100 | SPRING STOPPER DLP | | 1 | 1 | 1 |
| ⊙ | 16 | 302H494020 | 2H494020 | ERASER KIT (N) SP | 30ppm(A) | 1 | 1 | 1 |
| ⊙ | 16 | 302LZ94010 | 2LZ94010 | PARTS PWB ERASER SP | 35ppm(A) 30ppm(B) | 1 | 1 | 1 |
| | 17 | 302LY93030 | 2LY93030 | LK-160 | 30ppm(B) 35ppm(B) | 1 | 1 | 1 |
| ⊙ | 17 | 302LZ93030 | 2LZ93030 | LK-170 | 30ppm(A) 35ppm(A) 30ppm(B) 35ppm(B) | 1 | 1 | 1 |
| | 18 | 302LZ24030 | 2LZ24030 | ACTUATOR REGIST | | 1 | 1 | 1 |
| | 19 | 302HS24070 | 2HS24070 | SPRING ACTUATOR REG | | 1 | 1 | 1 |
| | 20 | 302H402060 | 2H402060 | SPRING EARTH DU FEED | | 1 | 1 | 1 |
| | 21 | 302HS02330 | 2HS02330 | SPRING EARTH DU PLATE | | 1 | 1 | 1 |
| ⊙ | 22 | 302HS24160 | 2HS24160 | ROLLER DU | | 2 | 2 | 2 |
| ⊙ | 23 | 302HS02650 | 2HS02650 | HOOK PF | | 1 | 1 | 1 |
| | 24 | 302HS02470 | 2HS02470 | SPRING PIN BIAS | | 1 | 1 | 1 |
| | 25 | 302HS08050 | 2HS08050 | BASE MPF | | 1 | 1 | 1 |
| | 26 | 302H402040 | 2H402040 | SPRING REG GND | | 1 | 1 | 1 |
| ⊙ | 27 | 302H994360 | 2H994360 | PARTS FULL SENSOR ASSY SP | | 1 | 1 | 1 |
| | 28 | 7RHA2H10701+H01 | RH043740 | M.GLAZE R. 100MJ 1/2W | | 1 | 1 | 1 |
| | 29 | 302HS08100 | 2HS08100 | BRACKET BOTTOM | | 1 | 1 | 1 |
| | 30 | 302HS08170 | 2HS08170 | SPRING SEPARATOR | | 1 | 1 | 1 |
| | 31 | 302HS24300 | 2HS24300 | SPRING CONTACT TC | | 1 | 1 | 1 |
| | 32 | 302HS08210 | 2HS08210 | SPRING EARTH MPF | | 1 | 1 | 1 |
| | 33 | 302HS08230 | 2HS08230 | PLATE EARTH BOTTOM | | 1 | 1 | 1 |
| | 34 | 302HS08270 | 2HS08270 | SPRING BRACKET | | 1 | 1 | 1 |
| | 35 | 302HS02461 | 2HS02461 | PIN CONTACT BIAS | | 1 | 1 | 1 |
| | 36 | 302HS94281 | 2HS94281 | HOLDER MCH ASSY | | 1 | 1 | 1 |

| | Ref. No. | Part.No. | Alternative. | Description | Notes | Quantity | | |
|--|----------|-------------|--------------|----------------------------|-------|----------|-----|-----|
| | | | | | | 120 | 230 | 240 |
| | 101 | 7BB200410H | BB105700 | +BIND T.T P SCREW 4X10 | | | | |
| | 102 | 7BB600308H | BB055190 | +BIND SCREW M3X8 CRFREE SR | | | | |
| | 103 | 7BB100306H1 | BB105820 | +BIND T.T S SCREW 3X6 | | | | |

- Parts with "⊙" indicate regular maintenance parts.
- Parts with Ref.No. indicate maintenance parts and the ones without it indicate out of the above.

- Parts with "*" are component parts or sub-assemblies of the assembly appearing immediately above them.
- Parts with "••" are component parts or sub-assembly with "•" appearing immediately above them.

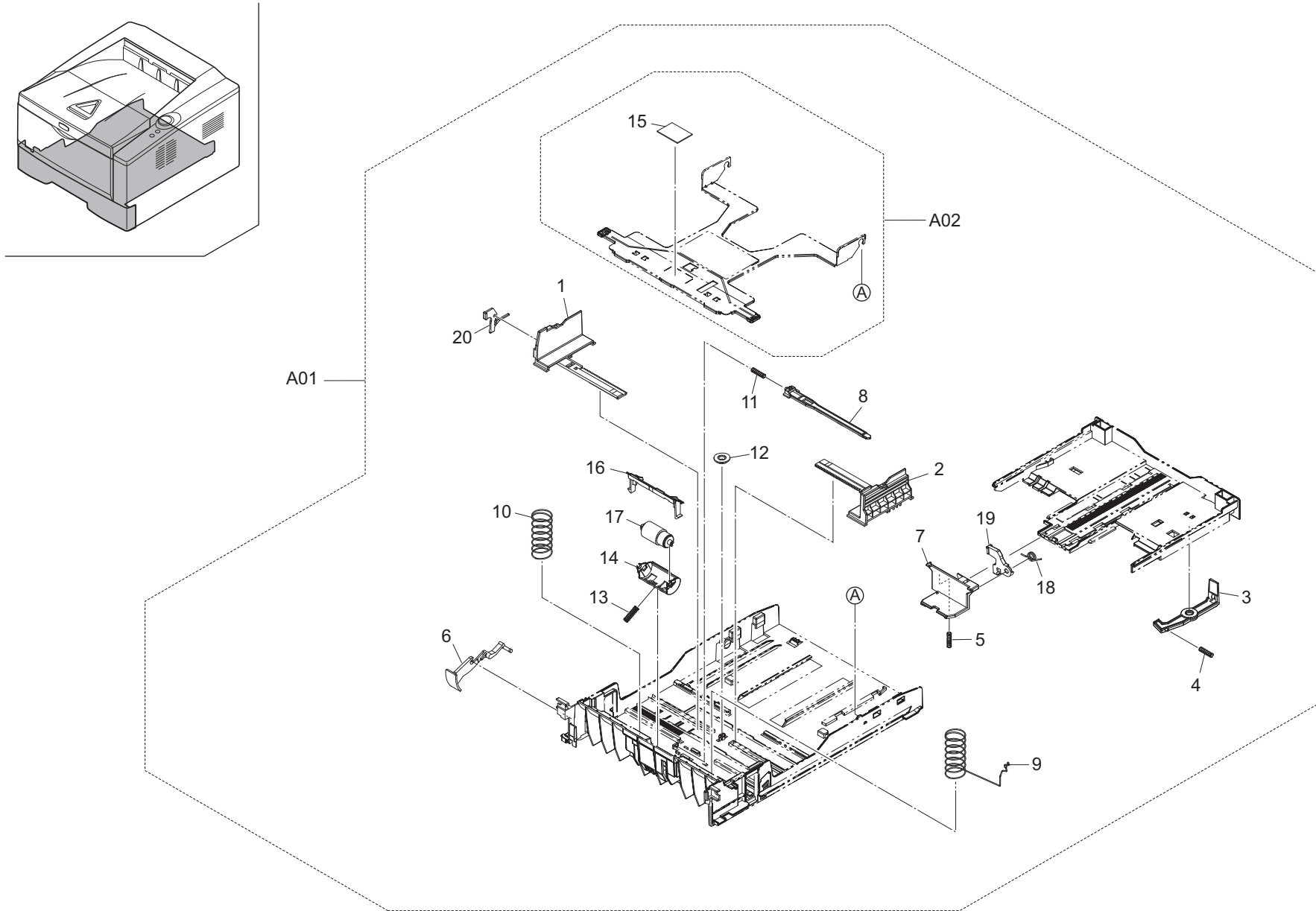


FIG. 3 Paper Cassette

2LY/2LZ/2PG/2PH-1

| | Ref. No. | Part.No. | Alternative. | Description | Notes | Quantity | | |
|---|----------|---------------|--------------|---------------------------------|-------|----------|-----|-----|
| | | | | | | 120 | 230 | 240 |
| ⊙ | A01 | 302LZ93071 | 2LZ93071 | CT-170 | | 1 | 1 | 1 |
| | 1 | *2FM06010 | 5MVX765SH004 | GUIDE SIDE L /B-11 CASSETTE A2 | | 1 | 1 | 1 |
| | 2 | *2FM06020 | 5MVX765SH005 | GUIDE SIDE R /B-11 CASSETTE A2 | | 1 | 1 | 1 |
| | 3 | *302F909031 | 2F909031 | LEVER BASE CAS REAR | | 1 | 1 | 1 |
| | 4 | *302F909040 | 2F909040 | SPRING BASE CAS REAR | | 1 | 1 | 1 |
| | 5 | *302HN09190 | 2HN09190 | SPRING FIX | | 1 | 1 | 1 |
| | 6 | *302HS09070 | 2HS09070 | PAPER INDICATOR | | 1 | 1 | 1 |
| | 7 | *302HS09081 | 2HS09081 | CURSOR END | | 1 | 1 | 1 |
| | 8 | *302HS09100 | 2HS09100 | LOCK BOTTOM | | 1 | 1 | 1 |
| | 9 | *302HS09120 | 2HS09120 | SPRING BOTTOM L | | 1 | 1 | 1 |
| | 10 | *302HS09130 | 2HS09130 | SPRING BOTTOM R | | 1 | 1 | 1 |
| | 11 | *302HS09140 | 2HS09140 | SPRING LOCK BOTTOM | | 1 | 1 | 1 |
| | 12 | *302HS09160 | 2HS09160 | GEAR CASSETTE | | 1 | 1 | 1 |
| | 13 | *302HS09180 | 2HS09180 | SPRING RETARD | | 1 | 1 | 1 |
| | 14 | *302HS09260 | 2HS09260 | HOLDER RETARD | | 1 | 1 | 1 |
| ⊙ | A02 | *302HS94000 | 2HS94000 | PLATE BOTTOM ASSY | | 1 | 1 | 1 |
| | 15 | **302F909210 | 2F909210 | PAD BOTTOM | | 1 | 1 | 1 |
| | 16 | *302LZ09030 | 2LZ09030 | GUIDE RETARD | | 1 | 1 | 1 |
| ⊙ | 17 | *302BR06521 | 2BR06521 | RETARD ROLL ASSY /43487V0005 A4 | | 1 | 1 | 1 |
| | 18 | *5MMW171LD006 | 2A807530 | SPRING STOPPER /A49 CASSETTE A4 | | 1 | 1 | 1 |
| | 19 | *5MVX541DG002 | 2A807191 | LEVER REAR /A-49 CASSETTE A3 | | 1 | 1 | 1 |
| | 20 | *5MVX541DG003 | 2A807161 | LEVER SIDE /A-49 CASSETTE A3 | | 1 | 1 | 1 |

| | Ref. No. | Part.No. | Alternative. | Description | Notes | Quantity | | |
|--|----------|----------|--------------|-------------|-------|----------|-----|-----|
| | | | | | | 120 | 230 | 240 |
| | | | | | | | | |
| | | | | | | | | |
| | | | | | | | | |
| | | | | | | | | |
| | | | | | | | | |
| | | | | | | | | |
| | | | | | | | | |
| | | | | | | | | |
| | | | | | | | | |
| | | | | | | | | |
| | | | | | | | | |
| | | | | | | | | |
| | | | | | | | | |
| | | | | | | | | |
| | | | | | | | | |
| | | | | | | | | |
| | | | | | | | | |
| | | | | | | | | |

- Parts with "⊙" indicate regular maintenance parts.
- Parts with Ref.No. indicate maintenance parts and the ones without it indicate out of the above.

- Parts with "*" are component parts or sub-assemblies of the assembly appearing immediately above them.
- Parts with "•" are component parts or sub-assembly with "•" appearing immediately above them.

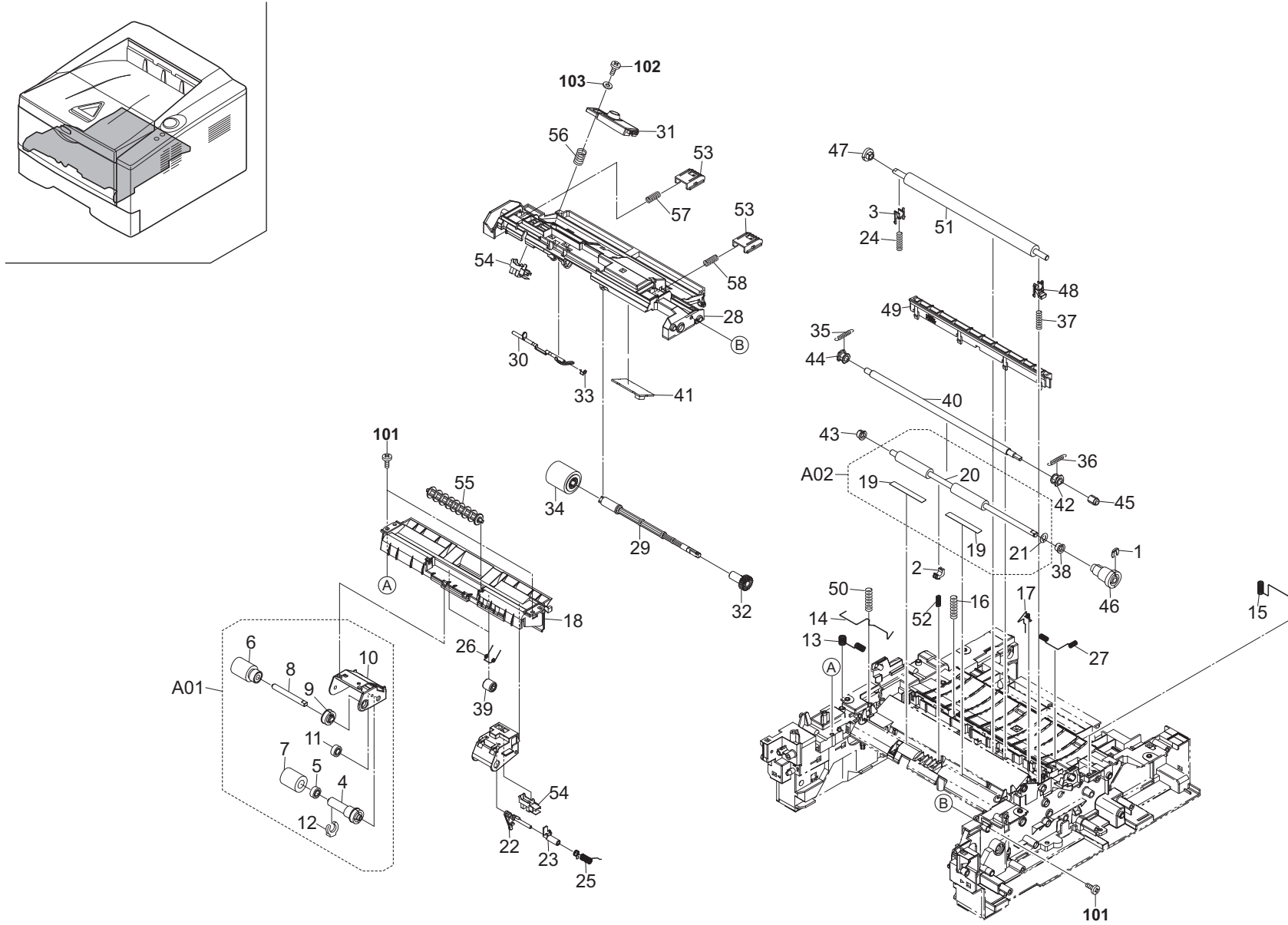


FIG. 4 Paper Feed Section 1

2LY/2LZ/2PG/2PH-1

| | Ref. No. | Part.No. | Alternative. | Description | Notes | Quantity | | |
|---|----------|------------------|--------------|--------------------------------|-------|----------|-----|-----|
| | | | | | | 120 | 230 | 240 |
| ⊙ | 1 | 5MVX111DN003 | 2A806250 | RING STOPPER /A-49 FEED A4 | | 1 | 1 | 1 |
| | 2 | 302LZ24220 | 2LZ24220 | BUSH REGIST C | | 1 | 1 | 1 |
| ⊙ | 3 | 302A816031 | 2A816031 | BUSH TC R /A-49 FEED A4 | | 1 | 1 | 1 |
| ⊙ | A01 | 302HS94032 | 2HS94032 | HOLDER FEED ASSY | | 1 | 1 | 1 |
| | 4 | *302F906170 | 2F906170 | JOINT PICKUP A | | 1 | 1 | 1 |
| | 5 | *302F906180 | 2F906180 | JOINT PICKUP B | | 1 | 1 | 1 |
| | 6 | *302F906230 | 2F906230 | PULLEY FEED ASSY | | 1 | 1 | 1 |
| | 7 | *302F906240 | 2F906240 | PULLEY PICKUP ASSY | | 1 | 1 | 1 |
| | 8 | *302F906272 | 2F906272 | SHAFT FEED L | | 1 | 1 | 1 |
| | 9 | *302F906280 | 2F906280 | GEAR FEED Z30H | | 1 | 1 | 1 |
| | 10 | *302HS06020 | 2HS06020 | HOLDER FEED | | 1 | 1 | 1 |
| ⊙ | 11 | *302HS06090 | 2HS06090 | GEAR Z22S FEED | | 1 | 1 | 1 |
| ⊙ | 12 | *5MVX111DN003 | 2A806250 | RING STOPPER /A-49 FEED A4 | | 1 | 1 | 1 |
| | 13 | 302LZ02100 | 2LZ02100 | SPRING EARTH REG UP | | 1 | 1 | 1 |
| | 14 | 302HS02260 | 2HS02260 | SPRING EARTH REG LOW | | 1 | 1 | 1 |
| | 15 | 302HS02340 | 2HS02340 | SPRING EARTH RIGHT | | 1 | 1 | 1 |
| | 16 | 302HS02410 | 2HS02410 | SPRING EARTH DU MID | | 1 | 1 | 1 |
| | 17 | 302HS02440 | 2HS02440 | SPRING EARTH DLP PLATE | | 1 | 1 | 1 |
| | 18 | 302HS06010 | 2HS06010 | FRAME FEED | | 1 | 1 | 1 |
| ⊙ | A02 | 302HS94081 | 2HS94081 | REGIST LOW KIT | | 1 | 1 | 1 |
| | 19 | *302HS24181 | 2HS24181 | SHEET REGIST | | 2 | 2 | 2 |
| | 20 | *302HS24410 | 2HS24410 | ROLLER REGIST LOW | | 1 | 1 | 1 |
| | 21 | *7BC460529080H01 | BC059590 | CUT WASHER 5.2X9.0X0.8T(BLACK) | | 1 | 1 | 1 |
| ⊙ | 22 | 302LZ06011 | 2LZ06011 | ACTUATOR EMPTY A | | 1 | 1 | 1 |
| ⊙ | 23 | 302HS06071 | 2HS06071 | ACTUATOR EMPTY B | | 1 | 1 | 1 |
| | 24 | 302LZ24090 | 2LZ24090 | SPRING TC L | | 1 | 1 | 1 |
| | 25 | 302HS06120 | 2HS06120 | SPRING ACTUATOR | | 1 | 1 | 1 |
| | 26 | 302HS06130 | 2HS06130 | SPRING PULLEY | | 2 | 2 | 2 |
| | 27 | 302HS24310 | 2HS24310 | SPRING EARTH BRUSH | | 1 | 1 | 1 |
| | 28 | 302HS08011 | 2HS08011 | FRAME MPF | | 1 | 1 | 1 |
| | 29 | 302HS08080 | 2HS08080 | SHAFT FEED MPF | | 1 | 1 | 1 |
| ⊙ | 30 | 302HS08110 | 2HS08110 | ACTUATOR MPF | | 1 | 1 | 1 |
| ⊙ | 31 | 302HS94150 | 2HS94150 | EMPTY SENSOR KIT SP | | 1 | 1 | 1 |
| ⊙ | 32 | 302HS08160 | 2HS08160 | GEAR Z20S MPF | | 1 | 1 | 1 |
| | 33 | 302HS08190 | 2HS08190 | SPRING ACTUATOR | | 1 | 1 | 1 |
| ⊙ | 34 | 302HS08260 | 2HS08260 | ROLLER M/P ASSY | | 1 | 1 | 1 |
| ⊙ | 35 | 302LZ24120 | 2LZ24120 | SPRING REGIST LB | | 1 | 1 | 1 |
| ⊙ | 36 | 302LZ24110 | 2LZ24110 | SPRING REGIST RB | | 1 | 1 | 1 |
| | 37 | 302HS24400 | 2HS24400 | SPRING TC R | | 1 | 1 | 1 |
| | 38 | 302HS24460 | 2HS24460 | BUSH REGIST R | | 1 | 1 | 1 |
| ⊙ | 39 | 5MVM273DB005 | 2A820100 | PULLEY EXIT /A-49 FUSER A3 | | 2 | 2 | 2 |
| | 40 | 302LZ94050 | 2LZ94050 | PARTS ROLLER REGIST UP SP | | 1 | 1 | 1 |
| | 41 | 302HS01130 | 2HS01130 | P.W.B RFID WITH SOFTWARE | | 1 | 1 | 1 |
| | 42 | 302HS24120 | 2HS24120 | BUSH REGIST | | 1 | 1 | 1 |
| | 43 | 302HS24140 | 2HS24140 | BUSH 6 EW | | 1 | 1 | 1 |
| | 44 | 302H402050 | 2H402050 | BUSH REGIST | | 1 | 1 | 1 |
| ⊙ | 45 | 302HS24190 | 2HS24190 | GEAR Z14R REG UP | | 1 | 1 | 1 |
| ⊙ | 46 | 302HS24200 | 2HS24200 | GEAR Z21L-Z23L REG LOW | | 1 | 1 | 1 |
| ⊙ | 47 | 302LZ24010 | 2LZ24010 | GEAR Z17L TC | | 1 | 1 | 1 |

| | Ref. No. | Part.No. | Alternative. | Description | Notes | Quantity | | |
|---|----------|-----------------|--------------|-------------------------------|-------|----------|-----|-----|
| | | | | | | 120 | 230 | 240 |
| ⊙ | 48 | 302HS24250 | 2HS24250 | BUSH TC R | | 1 | 1 | 1 |
| ⊙ | 49 | 302H494080 | 2H494080 | HOLDER DC BRUSH ASSY | | 1 | 1 | 1 |
| | 50 | 302HS24280 | 2HS24280 | SPRING RELEASE TC L | | 1 | 1 | 1 |
| ⊙ | 51 | 302LZ94060 | 2LZ94060 | PARTS ROLLER TRANSFER E SP | | | 1 | 1 |
| ⊙ | 51 | 302LZ94070 | 2LZ94070 | PARTS ROLLER TRANSFER A SP | | 1 | | |
| | 52 | 302HS24360 | 2HS24360 | SPRING REGIST C | | 1 | 1 | 1 |
| ⊙ | 53 | 5MVX431DN005 | 2FV02100 | LEVER LOCK DLP | | 2 | 2 | 2 |
| | 54 | 7NXSG2481+++H01 | NX052600 | SENSOR OPT. | | 2 | 2 | 2 |
| | 55 | 302HS06050 | 2HS06050 | PULLEY FEED | | 1 | 1 | 1 |
| | 56 | 5MMW261LD036 | 2A814570 | SPRING TE SENSOR /A-49 DLP A4 | | 1 | 1 | 1 |
| | 57 | 5MMW261LD067 | 2FV02270 | SPRING LEVER LOCK L | | 1 | 1 | 1 |
| | 58 | 5MMW261LD068 | 2FV02280 | SPRING LEVER LOCK R | | 1 | 1 | 1 |
| | 101 | 7BB200410H | BB105700 | +BIND T.T P SCREW 4X10 | | | | |
| | 102 | 7BB202308H | BB105690 | +TP-FLAT T.T P SCREW 3X8 | | | | |
| | 103 | 7BC00030A080H01 | BC046150 | WASHER M3X10X0.8T | | | | |

- Parts with "⊙" indicate regular maintenance parts.
- Parts with Ref.No. indicate maintenance parts and the ones without it indicate out of the above.

- Parts with "*" are component parts or sub-assemblies of the assembly appearing immediately above them.
- Parts with "••" are component parts or sub-assembly with "•" appearing immediately above them.

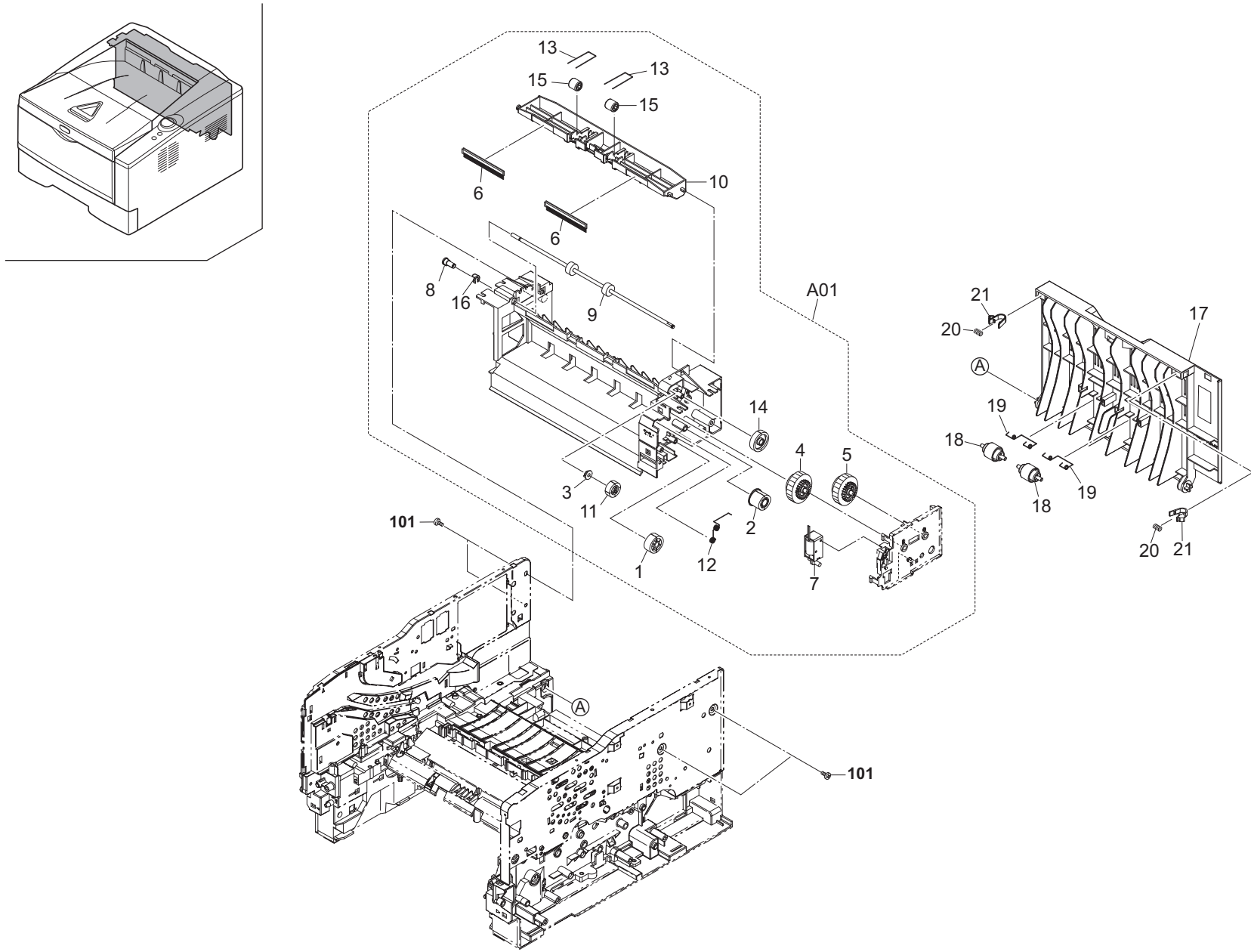


FIG. 5 Paper Feed Section 2

2LY/2LZ/2PG/2PH-1

| Ref. No. | Part.No. | Alternative. | Description | Notes | Quantity | | |
|----------|---------------|--------------|----------------------------|-------|----------|-----|-----|
| | | | | | 120 | 230 | 240 |
| ⊙ A01 | 302LZ94100 | 2LZ94100 | PARTS FD ASSY (2LZ) SP | | 1 | 1 | 1 |
| ⊙ 1 | *2BL06380 | 2BL06380 | GEAR Z25 JOINT | | 1 | 1 | 1 |
| ⊙ 2 | *2FM02350 | 5MVG133DN022 | GEAR Z22 /B-11 FRAME A4 | | 1 | 1 | 1 |
| ⊙ 3 | *302F929140 | 2F929140 | BUSH DU | | 1 | 1 | 1 |
| ⊙ 4 | *302FM94020 | 2FM94020 | GEAR CLUTCH ASSY A SP | | 1 | 1 | 1 |
| ⊙ 5 | *302FM94030 | 2FM94030 | GEAR CLUTCH ASSY B SP | | 1 | 1 | 1 |
| ⊙ 6 | *302H428020 | 2H428020 | DISCHARGER FD | | 2 | 2 | 2 |
| ⊙ 7 | *302H494070 | 2H494070 | SOLENOID ASSY SP | | 1 | 1 | 1 |
| ⊙ 8 | *302HN29050 | 2HN29050 | BUSH DU | | 1 | 1 | 1 |
| ⊙ 9 | *302HS28830 | 2HS28830 | ROLLER FD UP B | | 1 | 1 | 1 |
| 10 | *302HS28041 | 2HS28041 | COVER FD | | 1 | 1 | 1 |
| ⊙ 11 | *302HS28060 | 2HS28060 | GEAR Z21S | | 1 | 1 | 1 |
| 12 | *302HS28110 | 2HS28110 | SPRING EARTH | | 1 | 1 | 1 |
| 13 | *302HS28141 | 2HS28141 | SPRING PULLEY | | 2 | 2 | 2 |
| ⊙ 14 | *302HS28170 | 2HS28170 | GEAR FD Z29S | | 1 | 1 | 1 |
| 15 | *5MVM273DB005 | 2A820100 | PULLEY EXIT /A-49 FUSER A3 | | 2 | 2 | 2 |
| 16 | *5MVX111DN007 | 2BT11070 | STOPPER 3 /2BT1107 A4 | | 1 | 1 | 1 |
| ⊙ 17 | 302HS94160 | 2HS94160 | COVER REAR ASSY SP | | 1 | 1 | 1 |
| 18 | 302HS28070 | 2HS28070 | PULLEY EXIT | | 2 | 2 | 2 |
| 19 | 302HS28120 | 2HS28120 | SPRING EXIT | | 2 | 2 | 2 |
| 20 | 302HS08320 | 2HS08320 | SPRING COVER MPF | | 2 | 2 | 2 |
| 21 | 302F908200 | 2F908200 | LOCK COVER | | 2 | 2 | 2 |

| Ref. No. | Part.No. | Alternative. | Description | Notes | Quantity | | |
|----------|------------|--------------|------------------------|-------|----------|-----|-----|
| | | | | | 120 | 230 | 240 |
| 101 | 7BB200410H | BB105700 | +BIND T.T P SCREW 4X10 | | | | |

- Parts with "⊙" indicate regular maintenance parts.
- Parts with Ref.No. indicate maintenance parts and the ones without it indicate out of the above.

- Parts with "*" are component parts or sub-assemblies of the assembly appearing immediately above them.
- Parts with "•" are component parts or sub-assembly with "*" appearing immediately above them.

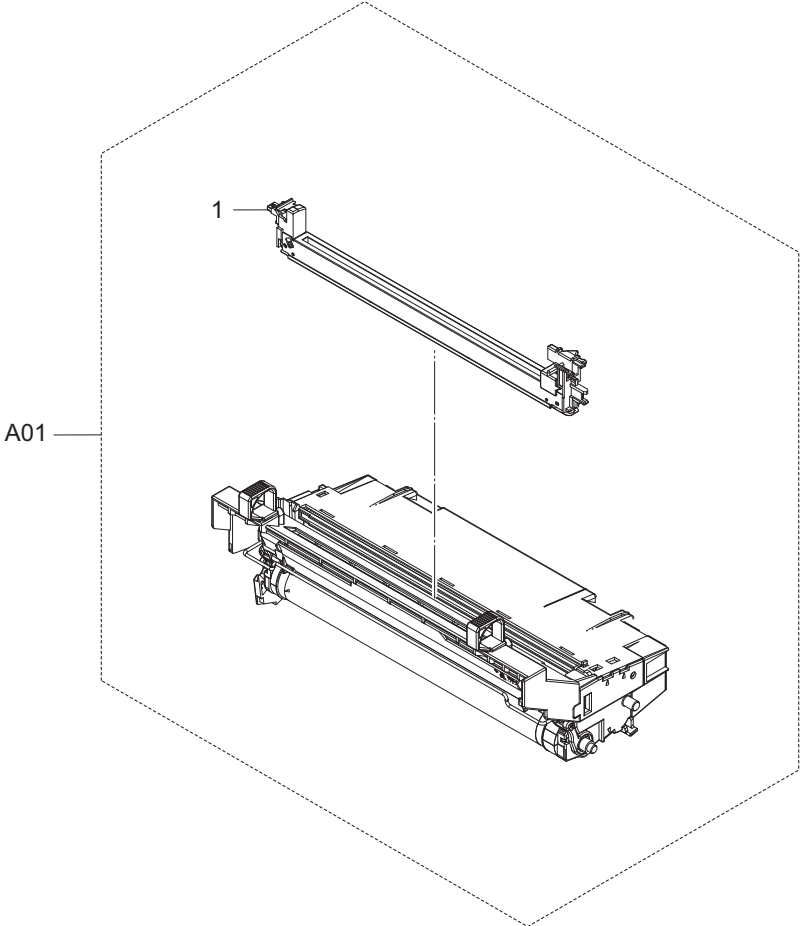
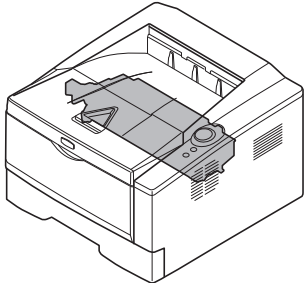


FIG. 6 Image Formation Section

2LY/2LZ/2PG/2PH-2

| | Ref. No. | Part.No. | Alternative. | Description | Notes | Quantity | | |
|---|----------|-------------|--------------|-------------|----------------------------------|----------|-----|-----|
| | | | | | | 120 | 230 | 240 |
| ⊙ | A01 | 302H493011 | 2H493011 | DK-150 | 30ppm(A) | 1 | 1 | 1 |
| ⊙ | A01 | 302LZ93061 | 2LZ93061 | DK-170 | 35ppm(A) 30ppm(B) 35ppm(B) | 1 | 1 | 1 |
| ⊙ | 1 | *302HS93070 | 2HS93070 | MC-130 | | 1 | 1 | 1 |

| | Ref. No. | Part.No. | Alternative. | Description | Notes | Quantity | | |
|--|----------|----------|--------------|-------------|-------|----------|-----|-----|
| | | | | | | 120 | 230 | 240 |
| | | | | | | | | |

- Parts with "⊙" indicate regular maintenance parts.
- Parts with Ref.No. indicate maintenance parts and the ones without it indicate out of the above.

- Parts with "*" are component parts or sub-assemblies of the assembly appearing immediately above them.
- Parts with "••" are component parts or sub-assembly with "•" appearing immediately above them.

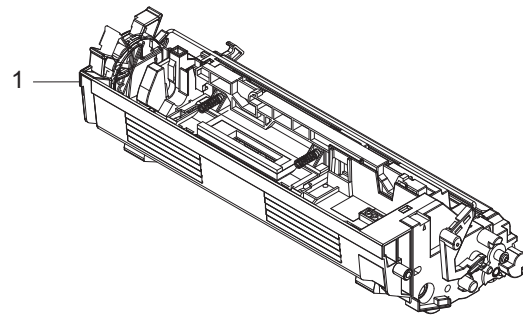
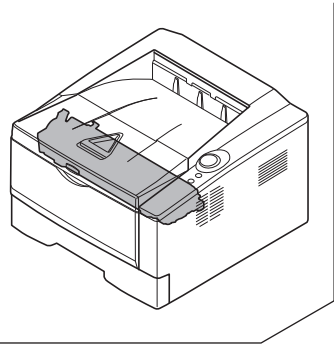


FIG. 7 Developing Section

2LY/2LZ/2PG/2PH-2

| | Ref. No. | Part.No. | Alternative. | Description | Notes | Quantity | | |
|---|----------|------------|--------------|-------------|----------------------|----------|-----|-----|
| | | | | | | 120 | 230 | 240 |
| ⊙ | 1 | 302LY93010 | 2LY93010 | DV-160(E) | 30ppm(A) 30ppm(B) | | 1 | |
| ⊙ | 1 | 302LY93020 | 2LY93020 | DV-162(U) | 30ppm(A) 30ppm(B) | 1 | | |
| ⊙ | 1 | 302LY93040 | 2LY93040 | DV-164(AO) | 30ppm(A) 30ppm(B) | | | 1 |
| ⊙ | 1 | 302LZ93010 | 2LZ93010 | DV-170(E) | 35ppm(A) 35ppm(B) | | 1 | |
| ⊙ | 1 | 302LZ93020 | 2LZ93020 | DV-172(U) | 35ppm(A) 35ppm(B) | 1 | | |
| ⊙ | 1 | 302LZ93080 | 2LZ93080 | DV-174(AO) | 35ppm(A) 35ppm(B) | | | 1 |

| | Ref. No. | Part.No. | Alternative. | Description | Notes | Quantity | | |
|--|----------|----------|--------------|-------------|-------|----------|-----|-----|
| | | | | | | 120 | 230 | 240 |
| | | | | | | | | |

- Parts with "⊙" indicate regular maintenance parts.
- Parts with Ref.No. indicate maintenance parts and the ones without it indicate out of the above.

- Parts with "*" are component parts or sub-assemblies of the assembly appearing immediately above them.
- Parts with "*•" are component parts or sub-assembly with "*" appearing immediately above them.

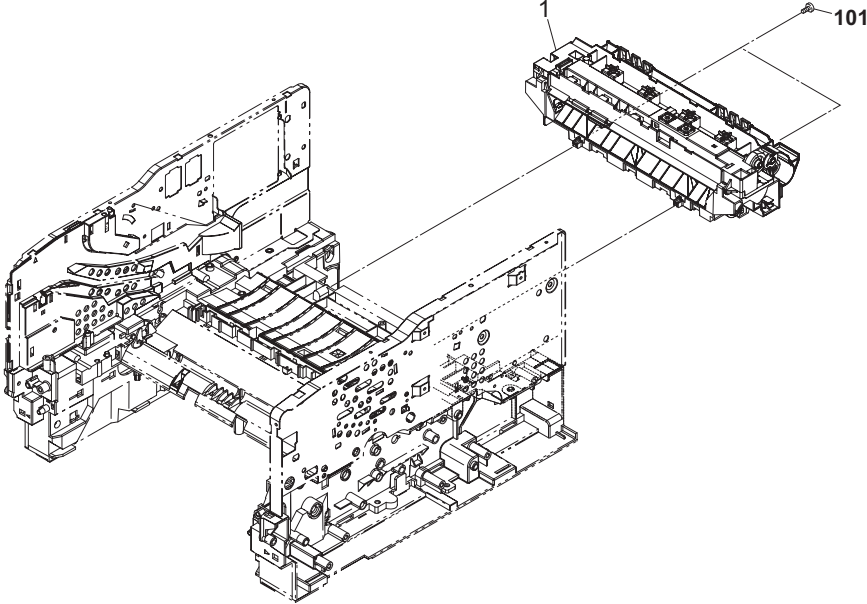
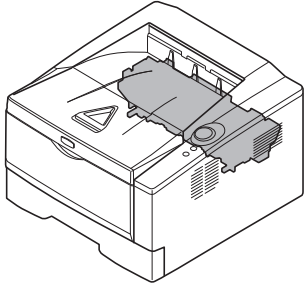


FIG. 8 Fuser Section

2LY/2LZ/2PG/2PH-2

| | Ref. No. | Part.No. | Alternative. | Description | Notes | Quantity | | |
|---|----------|------------|--------------|-------------|----------------------|----------|-----|-----|
| | | | | | | 120 | 230 | 240 |
| ⊙ | 1 | 302LZ93040 | 2LZ93040 | FK-170(E) | 30ppm(A) 35ppm(A) | 1 | 1 | |
| ⊙ | 1 | 302PH93010 | 2PH93010 | FK-171(E) | 30ppm(B) 35ppm(B) | 1 | 1 | |
| ⊙ | 1 | 302LZ93050 | 2LZ93050 | FK-170(U) | 30ppm(A) 35ppm(A) | 1 | | |
| ⊙ | 1 | 302PH93020 | 2PH93020 | FK-171(U) | 30ppm(B) 35ppm(B) | 1 | | |

| | Ref. No. | Part.No. | Alternative. | Description | Notes | Quantity | | |
|--|----------|------------|--------------|------------------------|-------|----------|-----|-----|
| | | | | | | 120 | 230 | 240 |
| | 101 | 7BB200410H | BB105700 | +BIND T.T P SCREW 4X10 | | | | |

- Parts with "⊙" indicate regular maintenance parts.
- Parts with Ref.No. indicate maintenance parts and the ones without it indicate out of the above.

- Parts with "*" are component parts or sub-assemblies of the assembly appearing immediately above them.
- Parts with "••" are component parts or sub-assembly with "•" appearing immediately above them.

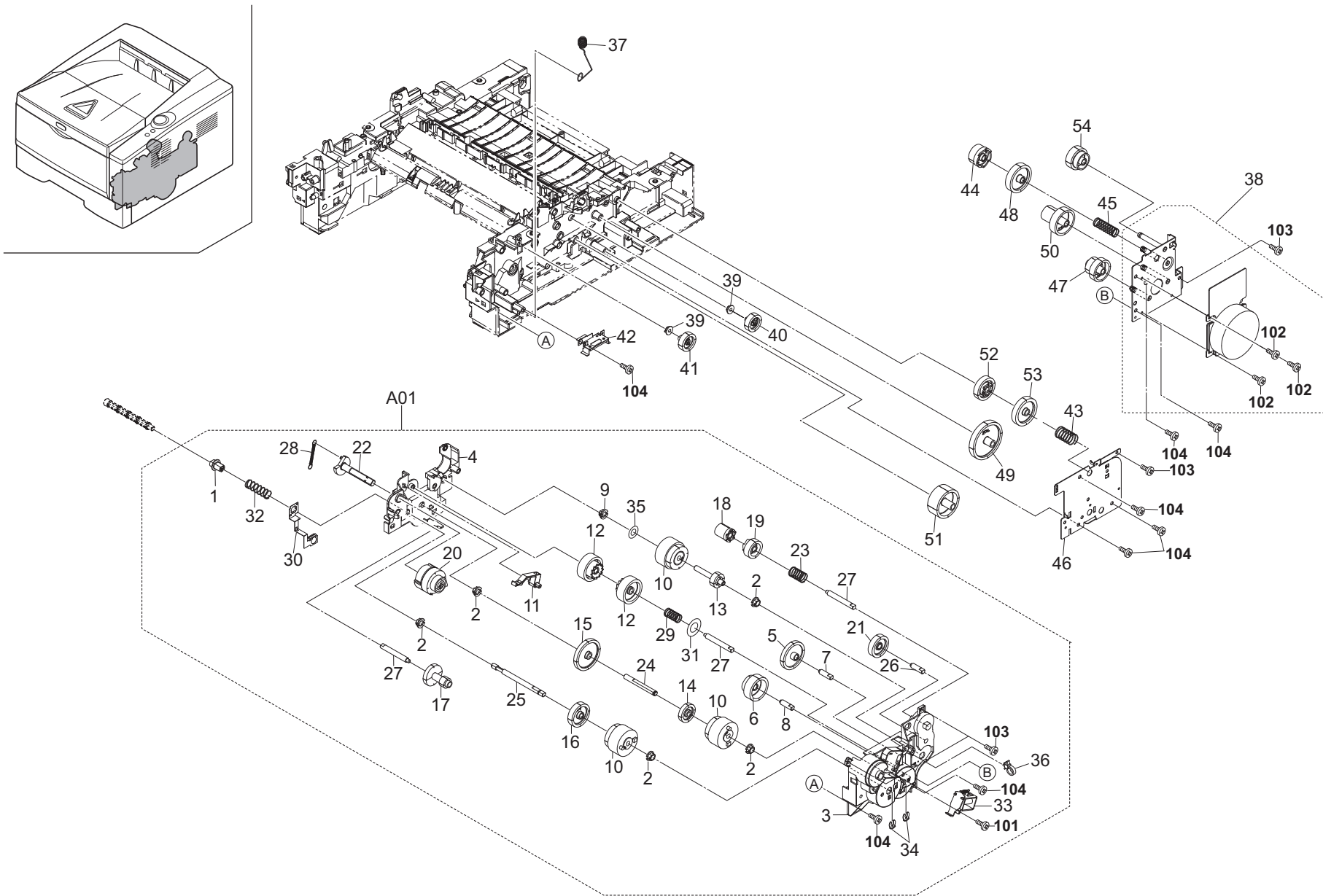


FIG. 9 Drive Section

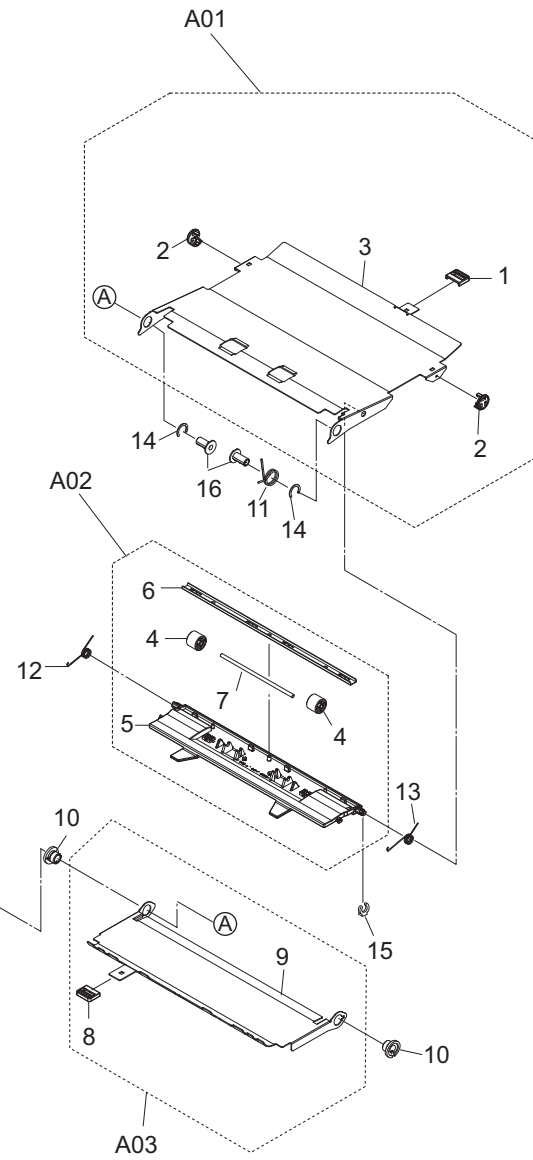
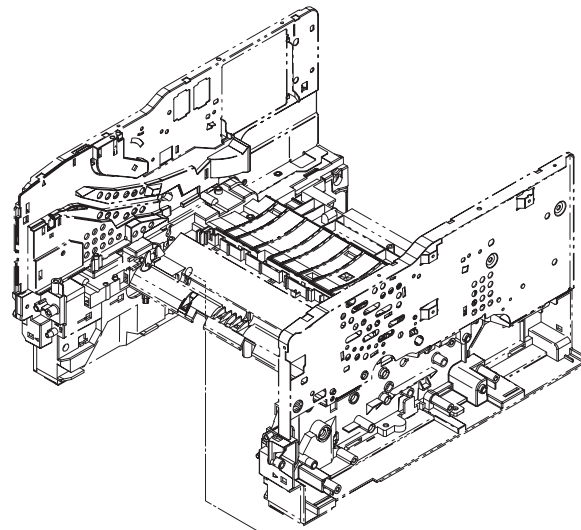
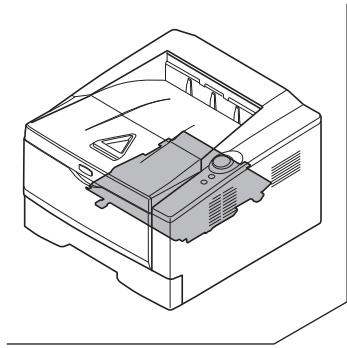
2LY/2LZ/2PG/2PH-1

| Ref. No. | Part.No. | Alternative. | Description | Notes | Quantity | | |
|----------|------------------|--------------|---------------------------------|-------|----------|-----|-----|
| | | | | | 120 | 230 | 240 |
| ⊙ A01 | 302H493040 | 2H493040 | DR-150 | | 1 | 1 | 1 |
| 1 | *302F931350 | 2F931350 | JOINT SHAFT CASSETTE | | 1 | 1 | 1 |
| 2 | *302F931490 | 2F931490 | BUSH FEED DRIVE | | 5 | 5 | 5 |
| 3 | *302H431010 | 2H431010 | HOLDER DRIVE | | 1 | 1 | 1 |
| 4 | *302H431020 | 2H431020 | COVER HOLDER DRIVE | | 1 | 1 | 1 |
| ⊙ 5 | *302H431030 | 2H431030 | GEAR Z42R | | 1 | 1 | 1 |
| ⊙ 6 | *302H431040 | 2H431040 | GEAR Z34L-Z24L | | 1 | 1 | 1 |
| 7 | *302H431050 | 2H431050 | PIN HOLDER A | | 1 | 1 | 1 |
| 8 | *302H431060 | 2H431060 | PIN HOLDER B | | 1 | 1 | 1 |
| 9 | *302H431070 | 2H431070 | BUSH DRIVE 6 | | 1 | 1 | 1 |
| ⊙ 10 | *302HN44111 | 2HN44111 | CLUTCH FEED | | 3 | 3 | 3 |
| 11 | *302HS31050 | 2HS31050 | LEVER LIFT BOTTOM | | 1 | 1 | 1 |
| ⊙ 12 | *302HS31090 | 2HS31090 | GEAR Z37L FREE | | 2 | 2 | 2 |
| ⊙ 13 | *302HS31100 | 2HS31100 | GEAR Z20L CLUTCH | | 1 | 1 | 1 |
| ⊙ 14 | *302HS31120 | 2HS31120 | GEAR Z27L CLUTCH | | 1 | 1 | 1 |
| ⊙ 15 | *302HS31130 | 2HS31130 | GEAR Z45R CLUTCH | | 1 | 1 | 1 |
| ⊙ 16 | *302HS31140 | 2HS31140 | GEAR Z35R IDLE | | 1 | 1 | 1 |
| ⊙ 17 | *302HS31150 | 2HS31150 | GEAR Z31L-Z14S | | 1 | 1 | 1 |
| ⊙ 18 | *302HS31190 | 2HS31190 | GEAR Z17R FREE | | 1 | 1 | 1 |
| ⊙ 19 | *302HS31200 | 2HS31200 | GEAR Z26L FREE | | 1 | 1 | 1 |
| ⊙ 20 | *302HS31230 | 2HS31230 | GEAR Z38S MPF | | 1 | 1 | 1 |
| ⊙ 21 | *302HS31260 | 2HS31260 | GEAR Z32R | | 1 | 1 | 1 |
| 22 | *302HS31281 | 2HS31281 | LIFT BOTTOM | | 1 | 1 | 1 |
| 23 | *302HS31320 | 2HS31320 | SPRING FREE MAG | | 1 | 1 | 1 |
| 24 | *302HS31330 | 2HS31330 | PIN CLUTCH | | 1 | 1 | 1 |
| 25 | *302HS31340 | 2HS31340 | SHAFT CASSETTE | | 1 | 1 | 1 |
| 26 | *302HS31360 | 2HS31360 | PIN HOLDER A | | 1 | 1 | 1 |
| 27 | *302HS31370 | 2HS31370 | PIN HOLDER B | | 3 | 3 | 3 |
| 28 | *302HS31380 | 2HS31380 | SPRING LIFT BOTTOM | | 1 | 1 | 1 |
| 29 | *302HS31410 | 2HS31410 | SPRING FREE Z37L | | 1 | 1 | 1 |
| 30 | *302HS31420 | 2HS31420 | EARTH PLATE DRIVE | | 1 | 1 | 1 |
| 31 | *302HS31430 | 2HS31430 | POLYSLIDER 9.5 | | 1 | 1 | 1 |
| 32 | *302HS31440 | 2HS31440 | SPRING FEED | | 1 | 1 | 1 |
| ⊙ 33 | *302HS44020 | 2HS44020 | SOLENOID MPF | | 1 | 1 | 1 |
| ⊙ 34 | *5MVX111DN003 | 2A806250 | RING STOPPER /A-49 FEED A4 | | 2 | 2 | 2 |
| 35 | *7BC06062C020H01 | BC045240 | POLY SLIDER WASHER M6.2X12X0.2T | | 1 | 1 | 1 |
| 36 | *M2107250 | M2107250 | BAND,RSG-100(KITAGAWA) | | 1 | 1 | 1 |
| 37 | 302HS02370 | 2HS02370 | SPRING EARTH CASSETTE | | 1 | 1 | 1 |
| ⊙ 38 | 302LZ94022 | 2LZ94022 | PARTS MOTOR ASSY SP | | 1 | 1 | 1 |
| 39 | 302F929140 | 2F929140 | BUSH DU | | 2 | 2 | 2 |
| ⊙ 40 | 302HS24220 | 2HS24220 | GEAR Z25R DU FEED | | 1 | 1 | 1 |
| ⊙ 41 | 302HS24230 | 2HS24230 | GEAR Z26L DU MID | | 1 | 1 | 1 |
| 42 | 302HS02381 | 2HS02381 | PLATE PF CONNECTOR | | 1 | 1 | 1 |
| 43 | 302HS31310 | 2HS31310 | SPRING FREE FUSER | | 1 | 1 | 1 |
| ⊙ 44 | 302HS31390 | 2HS31390 | GEAR Z27R FREE 2 | | 1 | 1 | 1 |
| 45 | 302LZ31040 | 2LZ31040 | SPRING FREE DRUM | | 1 | 1 | 1 |
| 46 | 302HS31041 | 2HS31041 | PLATE GEAR DRIVE | | 1 | 1 | 1 |
| ⊙ 47 | 302HS31250 | 2HS31250 | GEAR Z54R-Z24R | | 1 | 1 | 1 |
| ⊙ 48 | 302HS31070 | 2HS31070 | GEAR Z42R FREE 2 | | 1 | 1 | 1 |

| Ref. No. | Part.No. | Alternative. | Description | Notes | Quantity | | |
|----------|------------|--------------|----------------------------|-------|----------|-----|-----|
| | | | | | 120 | 230 | 240 |
| ⊙ 49 | 302HS31110 | 2HS31110 | GEAR Z58L | | 1 | 1 | 1 |
| ⊙ 50 | 302H431080 | 2H431080 | GEAR Z64R-Z21L | | 1 | 1 | 1 |
| ⊙ 51 | 302HS31180 | 2HS31180 | GEAR Z44R | | 1 | 1 | 1 |
| ⊙ 52 | 302HS31210 | 2HS31210 | GEAR Z35S FREE | | 1 | 1 | 1 |
| ⊙ 53 | 302HS31220 | 2HS31220 | GEAR Z42R FREE | | 1 | 1 | 1 |
| ⊙ 54 | 302HS31240 | 2HS31240 | GEAR Z32L DRUM | | 1 | 1 | 1 |
| 101 | 7BB200308H | BB105660 | +BIND T.T P SCREW 3X8 | | | | |
| 102 | BAB53060 | BAB53060 | +TP TAP-TITE S SCREW M3X06 | | | | |
| 103 | 7BB100306H | BB046010 | +BIND T.T S SCREW 3X6 | | | | |
| 104 | 7BB200410H | BB105700 | +BIND T.T P SCREW 4X10 | | | | |

- Parts with "⊙" indicate regular maintenance parts.
- Parts with Ref.No. indicate maintenance parts and the ones without it indicate out of the above.

- Parts with "*" are component parts or sub-assemblies of the assembly appearing immediately above them.
- Parts with "• •" are component parts or sub-assembly with "•" appearing immediately above them.



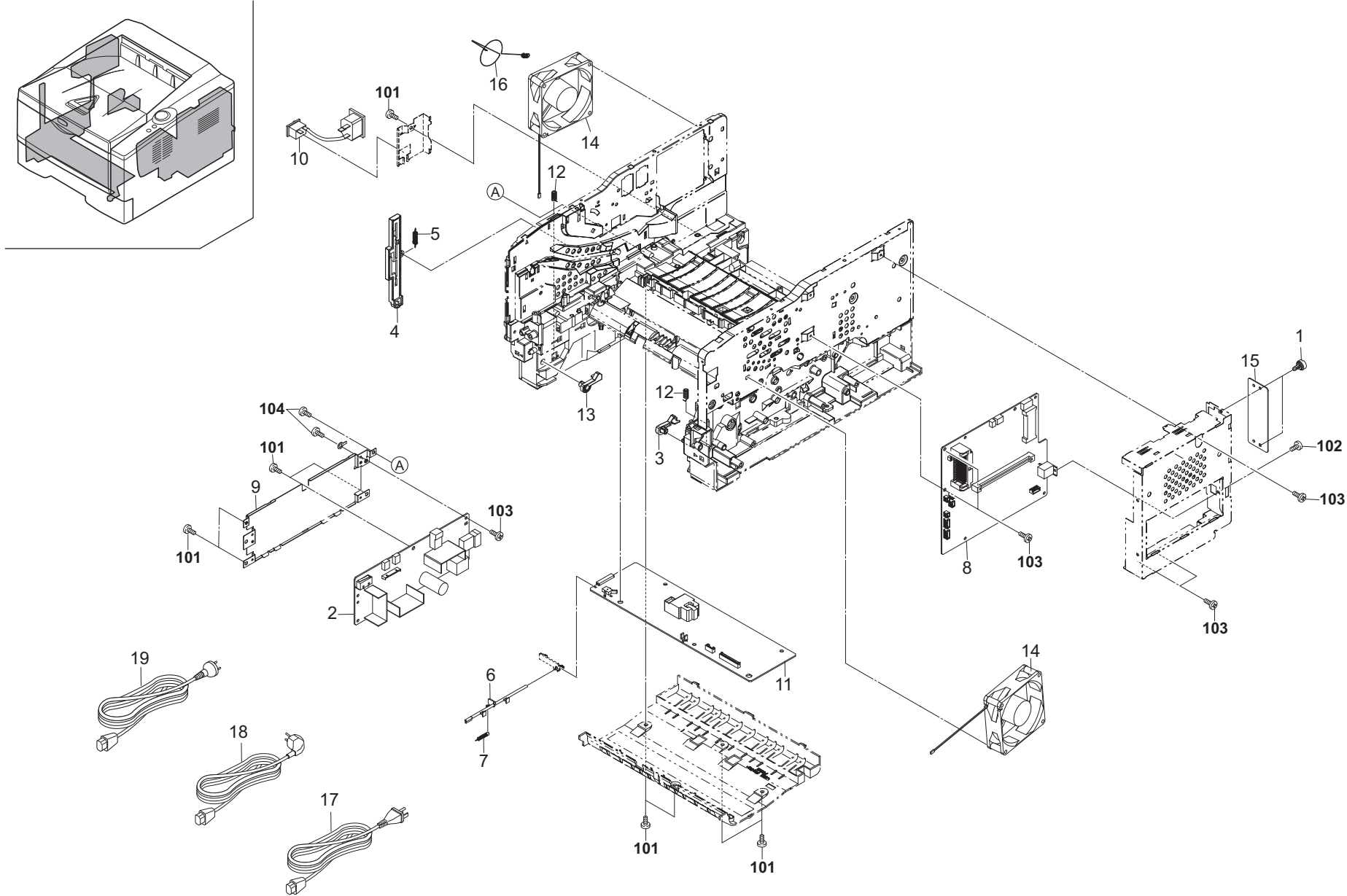


FIG. 11 Electrical Components

2LY/2LZ/2PG/2PH-2

| Ref. No. | Part.No. | Alternative. | Description | Notes | Quantity | | |
|----------|-----------------|--------------|-----------------------------------|----------|----------|-----|-----|
| | | | | | 120 | 230 | 240 |
| 1 | 302F939082 | 2F939082 | SCREW BOX | | 2 | 2 | 2 |
| ⊙ 2 | 302HS45013 | 2HS45013 | SWITCHING REGULATOR 230V | | | | 1 |
| ⊙ 2 | 302LZ94170 | 2LZ94170 | PARTS SWITCHING REGULATOR 230V SP | 30ppm(A) | | 1 | |
| ⊙ 2 | 302PG94020 | 2PG94020 | PARTS SWITCHING REGULATOR 230V SP | 35ppm(A) | | | |
| ⊙ 2 | 302PG94020 | 2PG94020 | PARTS SWITCHING REGULATOR 230V SP | 30ppm(B) | | 1 | |
| ⊙ 2 | 302HS45021 | 2HS45021 | SWITCHING REGULATOR 120V | 35ppm(B) | | | |
| ⊙ 3 | 302HS02070 | 2HS02070 | LEVER LOCK CASSETTE | | 1 | 1 | 1 |
| ⊙ 4 | 302HS02110 | 2HS02110 | LEVER INTERLOCK SW | | 1 | 1 | 1 |
| ⊙ 5 | 302HS02120 | 2HS02120 | SPRING INTERLOCK SW | | 1 | 1 | 1 |
| ⊙ 6 | 302HS02180 | 2HS02180 | PIN CASSETTE | | 1 | 1 | 1 |
| ⊙ 7 | 302HS02190 | 2HS02190 | SPRING PIN CASSETTE | | 1 | 1 | 1 |
| ⊙ 8 | 302LY94010 | 2LY94010 | PARTS PWB CONTROL SP | 30ppm(A) | 1 | | 1 |
| ⊙ 8 | 302LY94040 | 2LY94040 | PARTS PWB ASSY CONTROL SP | 30ppm(A) | | 1 | |
| ⊙ 8 | 302LZ94080 | 2LZ94080 | PARTS PWB CONTROL SP | 35ppm(A) | 1 | | 1 |
| ⊙ 8 | 302LZ94160 | 2LZ94160 | PARTS PWB ASSY CONTROL SP | 35ppm(A) | | 1 | |
| ⊙ 8 | 302PG94030 | 2PG94030 | PARTS PWB ASSY MAIN SP | 30ppm(B) | 1 | | 1 |
| ⊙ 8 | 302PH94020 | 2PH94020 | PARTS PWB ASSY MAIN SP | 35ppm(B) | 1 | | 1 |
| ⊙ 8 | 302PG94040 | 2PG94040 | PARTS PWB ASSY MAIN EU SP | 30ppm(B) | | 1 | |
| ⊙ 8 | 302PH94030 | 2PH94030 | PARTS PWB ASSY MAIN EU SP | 35ppm(B) | | 1 | |
| ⊙ 9 | 302HS02210 | 2HS02210 | PLATE POWER SUPPLY | | 1 | 1 | 1 |
| 10 | 302HS46120 | 2HS46120 | CONN.CORD ASSY PWS-INLET S03238 | | 1 | | 1 |
| 10 | 302LZ46030 | 2LZ46030 | CONN.CORD ASSY S03808 | | | | 1 |
| ⊙ 11 | 302H494220 | 2H494220 | PARTS HIGH VOLTAGE UNIT SP | 30ppm(A) | 1 | 1 | 1 |
| ⊙ 11 | 302LZ94041 | 2LZ94041 | PARTS HIGH VOLTAGE UNIT SP | 35ppm(A) | 1 | 1 | 1 |
| | | | | 30ppm(B) | | | |
| | | | | 35ppm(B) | | | |
| ⊙ 12 | 302HS02360 | 2HS02360 | SPRING LOCK CASSETTE | | 2 | 2 | 2 |
| ⊙ 13 | 302HS02390 | 2HS02390 | LEVER LOCK CASSETTE L | | 1 | 1 | 1 |
| ⊙ 14 | 302LZ94030 | 2LZ94030 | PARTS MOTOR FAN 80 SP | | 2 | 2 | 2 |
| 15 | 302HS39040 | 2HS39040 | PLATE OPTION | | 1 | 1 | 1 |
| 16 | 302HS02620 | 2HS02620 | SPRING EARTH FAN | | 1 | 1 | 1 |
| 17 | 7AAACCUS+10H001 | AA068380 | AC CORD ASSY US | | 1 | | |
| 18 | 302FV94010 | 2FV94010 | PARTS AC CORD EU SP | | | 1 | |
| 19 | 302FV45040 | 2FV45040 | AC CORD ASSY | | | | 1 |

| Ref. No. | Part.No. | Alternative. | Description | Notes | Quantity | | |
|----------|-----------------|--------------|--------------------------------------|-------|----------|-----|-----|
| | | | | | 120 | 230 | 240 |
| 101 | 7BB200410H | BB105700 | +BIND T.T P SCREW 4X10 | | | | |
| 102 | 5MBSPB3006NW++R | B1B03060 | BIND HEAD SCREW(+)/ M3 X 6 CRFREE | | | | |
| 103 | 7BB100306H1 | BB105820 | +BIND T.T S SCREW 3X6 | | | | |
| 104 | 5MBTPB4006TW++R | B1A54060 | BIND T.T SCREW(+)/ M4 X 6 CRFREE S-T | | | | |

- Parts with "⊙" indicate regular maintenance parts.
- Parts with Ref.No. indicate maintenance parts and the ones without it indicate out of the above.

- Parts with "*" are component parts or sub-assemblies of the assembly appearing immediately above them.
- Parts with "••" are component parts or sub-assembly with "•" appearing immediately above them.

FIG. 12 Maintenance Kits

2LY/2LZ/2PG/2PH-2

| Ref. No. | Part.No. | Alternative. | Description | Notes | Quantity | | |
|----------|------------|--------------|------------------------|-----------------------------|----------|-----|-----|
| | | | | | 120 | 230 | 240 |
| | 1702LY7US0 | 072LY7US | MK-162/MAINTENANCE KIT | OPTION 30ppm(A) | 1 | | |
| | | | DK-150 | | 1 | | |
| | | | DV-162(U) | | 1 | | |
| | 1702LY8AS0 | 072LY8AS | MK-164/MAINTENANCE KIT | OPTION 30ppm(A) | | | 1 |
| | | | DK-150 | | | | 1 |
| | | | DV-164(AO) | | | | 1 |
| | 1702LY8NL0 | 072LY8NL | MK-160/MAINTENANCE KIT | OPTION 30ppm(A) | 1 | | |
| | | | DK-150 | | 1 | | |
| | | | DV-160(E) | | 1 | | |
| | 1702LZ7US0 | 072LZ7US | MK-172/MAINTENANCE KIT | OPTION 35ppm(A) 35ppm(B) | 1 | | |
| | | | DV-172(U) | | 1 | | |
| | | | DK-170 | | 1 | | |
| | 1702LZ8AS0 | 072LZ8AS | MK-174/MAINTENANCE KIT | OPTION 35ppm(A) 35ppm(B) | | | 1 |
| | | | DV-174(AO) | | | | 1 |
| | | | DK-170 | | | | 1 |
| | 1702LZ8NL0 | 072LZ8NL | MK-170/MAINTENANCE KIT | OPTION 35ppm(A) 35ppm(B) | 1 | | |
| | | | DV-170(E) | | 1 | | |
| | | | DK-170 | | 1 | | |
| | 1702PG7US0 | 072PG7US | MK-182/MAINTENANCE KIT | OPTION 30ppm(B) | 1 | | |
| | | | DV-162(U) | | 1 | | |
| | | | DK-170 | | 1 | | |
| | 1702PG8AS0 | 072PG8AS | MK-184/MAINTENANCE KIT | OPTION 30ppm(B) | | | 1 |
| | | | DV-164(AO) | | | | 1 |
| | | | DK-170 | | | | 1 |
| | 1702PG8NL0 | 072PG8NL | MK-180/MAINTENANCE KIT | OPTION 30ppm(B) | 1 | | |
| | | | DV-160(E) | | 1 | | |
| | | | DK-170 | | 1 | | |

| Ref. No. | Part.No. | Alternative. | Description | Notes | Quantity | | |
|----------|----------|--------------|-------------|-------|----------|-----|-----|
| | | | | | 120 | 230 | 240 |
| | | | | | | | |

- Parts with "⊙" indicate regular maintenance parts.
- Parts with Ref.No. indicate maintenance parts and the ones without it indicate out of the above.

- Parts with "*" are component parts or sub-assemblies of the assembly appearing immediately above them.
- Parts with "••" are component parts or sub-assembly with "•" appearing immediately above them.

INDEX

2LY/2LZ/2PG/2PH-1

| | Part.No. | Alternative. | Description | Fig.No. |
|---|------------|--------------|---------------------------------|---------|
| | 1702LY7US0 | 072LY7US | MK-162/MAINTENANCE KIT | 12 |
| | 1702LY8AS0 | 072LY8AS | MK-164/MAINTENANCE KIT | 12 |
| | 1702LY8NL0 | 072LY8NL | MK-160/MAINTENANCE KIT | 12 |
| | 1702LZ7US0 | 072LZ7US | MK-172/MAINTENANCE KIT | 12 |
| | 1702LZ8AS0 | 072LZ8AS | MK-174/MAINTENANCE KIT | 12 |
| | 1702LZ8NL0 | 072LZ8NL | MK-170/MAINTENANCE KIT | 12 |
| | 1702PG7US0 | 072PG7US | MK-182/MAINTENANCE KIT | 12 |
| | 1702PG8AS0 | 072PG8AS | MK-184/MAINTENANCE KIT | 12 |
| | 1702PG8NL0 | 072PG8NL | MK-180/MAINTENANCE KIT | 12 |
| ⊙ | 2BL06380 | 2BL06380 | GEAR Z25 JOINT | 5 |
| | 2FM02140 | 5MVM786XB001 | BUSH DU /B-11 FRAME A3 | 10 |
| ⊙ | 2FM02210 | 5MVM274DN002 | PULLEY MID /B-11 FRAME A4 | 10 |
| ⊙ | 2FM02350 | 5MVG133DN022 | GEAR Z22 /B-11 FRAME A4 | 5 |
| | 2FM02500 | 5MMW176SD002 | SPRING DU R /B-11 FRAME A4 | 10 |
| | 2FM02510 | 5MMW166SD002 | SPRING HOLDER L /B-11 FRAME A4 | 10 |
| | 2FM02520 | 5MMW166SD003 | SPRING HOLDER R /B-11 FRAME A4 | 10 |
| | 2FM02690 | 5MVX221DG002 | LEVER DU /B-11 DU A3 | 10 |
| | 2FM06010 | 5MVX765SH004 | GUIDE SIDE L /B-11 CASSETTE A2 | 3 |
| | 2FM06020 | 5MVX765SH005 | GUIDE SIDE R /B-11 CASSETTE A2 | 3 |
| | 2FM21020 | 5MML821SD009 | STAY DU /B-11 DU A3 | 10 |
| | 2FM21030 | 5MVM276DN017 | STOPPER BUSH /B-11 DU A4 | 10 |
| | 2FM21050 | 5MVX173DN001 | COLLER DU /B-11 DU A3 | 10 |
| ⊙ | 302A816031 | 2A816031 | BUSH TC R /A-49 FEED A4 | 4 |
| ⊙ | 302BR06521 | 2BR06521 | RETARD ROLL ASSY /43487V0005 A4 | 3 |
| | 302F902420 | 2F902420 | LOCK COVER TOP R | 2 |
| | 302F904120 | 2F904120 | EMBLEM KYOCERA | 1 |
| | 302F904130 | 2F904130 | TAPE EMBLEM | 1 |
| | 302F906170 | 2F906170 | JOINT PICKUP A | 4 |
| | 302F906180 | 2F906180 | JOINT PICKUP B | 4 |
| | 302F906230 | 2F906230 | PULLEY FEED ASSY | 4 |
| | 302F906240 | 2F906240 | PULLEY PICKUP ASSY | 4 |
| | 302F906272 | 2F906272 | SHAFT FEED L | 4 |
| | 302F906280 | 2F906280 | GEAR FEED Z30H | 4 |
| | 302F908200 | 2F908200 | LOCK COVER | 2,5 |
| | 302F908270 | 2F908270 | SP BOTTOM MPF L | 2 |
| | 302F908310 | 2F908310 | PAD FRICTION MPF | 2 |
| | 302F909031 | 2F909031 | LEVER BASE CAS REAR | 3 |
| | 302F909040 | 2F909040 | SPRING BASE CAS REAR | 3 |
| | 302F909210 | 2F909210 | PAD BOTTOM | 3 |
| | 302F929140 | 2F929140 | BUSH DU | 5,9 |
| | 302F931270 | 2F931270 | SPRING FUSER | 1 |
| | 302F931350 | 2F931350 | JOINT SHAFT CASSETTE | 9 |
| | 302F931490 | 2F931490 | BUSH FEED DRIVE | 9 |
| | 302F939082 | 2F939082 | SCREW BOX | 11 |
| | 302FM02421 | 2FM02421 | SHAFT PULLEY /B-11 FRAME A4 | 10 |
| | 302FM21011 | 2FM21011 | HOLDER DU | 10 |
| ⊙ | 302FM94020 | 2FM94020 | GEAR CLUTCH ASSY A SP | 5 |
| ⊙ | 302FM94030 | 2FM94030 | GEAR CLUTCH ASSY B SP | 5 |
| ⊙ | 302FM94061 | 2FM94061 | PARTS HOLDER DU ASSY SP | 10 |
| | 302FV45040 | 2FV45040 | AC CORD ASSY | 11 |

| | Part.No. | Alternative. | Description | Fig.No. |
|---|------------|--------------|----------------------------|---------|
| | 302FV94010 | 2FV94010 | PARTS AC CORD EU SP | 11 |
| | 302H402040 | 2H402040 | SPRING REG GND | 2 |
| | 302H402050 | 2H402050 | BUSH REGIST | 4 |
| | 302H402060 | 2H402060 | SPRING EARTH DU FEED | 2 |
| ⊙ | 302H428020 | 2H428020 | DISCHARGER FD | 5 |
| | 302H431010 | 2H431010 | HOLDER DRIVE | 9 |
| | 302H431020 | 2H431020 | COVER HOLDER DRIVE | 9 |
| ⊙ | 302H431030 | 2H431030 | GEAR Z42R | 9 |
| ⊙ | 302H431040 | 2H431040 | GEAR Z34L-Z24L | 9 |
| | 302H431050 | 2H431050 | PIN HOLDER A | 9 |
| | 302H431060 | 2H431060 | PIN HOLDER B | 9 |
| | 302H431070 | 2H431070 | BUSH DRIVE 6 | 9 |
| ⊙ | 302H431080 | 2H431080 | GEAR Z64R-Z21L | 9 |
| ⊙ | 302H493011 | 2H493011 | DK-150 | 6 |
| ⊙ | 302H493040 | 2H493040 | DR-150 | 9 |
| ⊙ | 302H494020 | 2H494020 | ERASER KIT (N) SP | 2 |
| ⊙ | 302H494070 | 2H494070 | SOLENOID ASSY SP | 5 |
| ⊙ | 302H494080 | 2H494080 | HOLDER DC BRUSH ASSY | 4 |
| ⊙ | 302H494220 | 2H494220 | PARTS HIGH VOLTAGE UNIT SP | 11 |
| ⊙ | 302H994360 | 2H994360 | PARTS FULL SENSOR ASSY SP | 2 |
| | 302HN09190 | 2HN09190 | SPRING FIX | 3 |
| | 302HN29050 | 2HN29050 | BUSH DU | 5 |
| ⊙ | 302HN44111 | 2HN44111 | CLUTCH FEED | 9 |
| ⊙ | 302HS01030 | 2HS01030 | P.W.B BOARD ASSY PANEL | 1 |
| | 302HS01130 | 2HS01130 | P.W.B RFID WITH SOFTWARE | 4 |
| ⊙ | 302HS02070 | 2HS02070 | LEVER LOCK CASSETTE | 11 |
| ⊙ | 302HS02090 | 2HS02090 | LEVER STOPPER DLP | 2 |
| | 302HS02100 | 2HS02100 | SPRING STOPPER DLP | 2 |
| ⊙ | 302HS02110 | 2HS02110 | LEVER INTERLOCK SW | 11 |
| | 302HS02120 | 2HS02120 | SPRING INTERLOCK SW | 11 |
| | 302HS02160 | 2HS02160 | SPRING MC | 2 |
| ⊙ | 302HS02180 | 2HS02180 | PIN CASSETTE | 11 |
| ⊙ | 302HS02190 | 2HS02190 | SPRING PIN CASSETTE | 11 |
| ⊙ | 302HS02210 | 2HS02210 | PLATE POWER SUPPLY | 11 |
| | 302HS02260 | 2HS02260 | SPRING EARTH REG LOW | 4 |
| | 302HS02330 | 2HS02330 | SPRING EARTH DU PLATE | 2 |
| | 302HS02340 | 2HS02340 | SPRING EARTH RIGHT | 4 |
| | 302HS02360 | 2HS02360 | SPRING LOCK CASSETTE | 11 |
| | 302HS02370 | 2HS02370 | SPRING EARTH CASSETTE | 9 |
| | 302HS02381 | 2HS02381 | PLATE PF CONNECTOR | 9 |
| ⊙ | 302HS02390 | 2HS02390 | LEVER LOCK CASSETTE L | 11 |
| | 302HS02410 | 2HS02410 | SPRING EARTH DU MID | 4 |
| | 302HS02440 | 2HS02440 | SPRING EARTH DLP PLATE | 4 |
| | 302HS02461 | 2HS02461 | PIN CONTACT BIAS | 2 |
| | 302HS02470 | 2HS02470 | SPRING PIN BIAS | 2 |
| | 302HS02620 | 2HS02620 | SPRING EARTH FAN | 11 |
| ⊙ | 302HS02650 | 2HS02650 | HOOK PF | 2 |
| ⊙ | 302HS04070 | 2HS04070 | COVER RACK | 1 |
| | 302HS04080 | 2HS04080 | COVER PANEL | 1 |
| | 302HS04100 | 2HS04100 | BUTTON ENTER | 1 |

• Parts with "⊙" indicate regular maintenance parts.

| | Part.No. | Alternative. | Description | Fig.No. |
|---|------------|--------------|------------------------|---------|
| ⊙ | 302HS04110 | 2HS04110 | BUTTON CANCEL | 1 |
| | 302HS04160 | 2HS04160 | COVER RACK B | 1 |
| | 302HS04170 | 2HS04170 | SHEET TOP COVER | 1 |
| | 302HS06010 | 2HS06010 | FRAME FEED | 4 |
| | 302HS06020 | 2HS06020 | HOLDER FEED | 4 |
| | 302HS06050 | 2HS06050 | PULLEY FEED | 4 |
| ⊙ | 302HS06071 | 2HS06071 | ACTUATOR EMPTY B | 4 |
| ⊙ | 302HS06090 | 2HS06090 | GEAR Z22S FEED | 4 |
| | 302HS06120 | 2HS06120 | SPRING ACTUATOR | 4 |
| | 302HS06130 | 2HS06130 | SPRING PULLEY | 4 |
| | 302HS08011 | 2HS08011 | FRAME MPF | 4 |
| | 302HS08050 | 2HS08050 | BASE MPF | 2 |
| | 302HS08080 | 2HS08080 | SHAFT FEED MPF | 4 |
| | 302HS08100 | 2HS08100 | BRACKET BOTTOM | 2 |
| ⊙ | 302HS08110 | 2HS08110 | ACTUATOR MPF | 4 |
| ⊙ | 302HS08160 | 2HS08160 | GEAR Z20S MPF | 4 |
| | 302HS08170 | 2HS08170 | SPRING SEPARATOR | 2 |
| | 302HS08190 | 2HS08190 | SPRING ACTUATOR | 4 |
| | 302HS08210 | 2HS08210 | SPRING EARTH MPF | 2 |
| | 302HS08230 | 2HS08230 | PLATE EARTH BOTTOM | 2 |
| | 302HS08241 | 2HS08241 | GUIDE MPF R | 2 |
| | 302HS08251 | 2HS08251 | GUIDE MPF L | 2 |
| ⊙ | 302HS08260 | 2HS08260 | ROLLER M/P ASSY | 4 |
| | 302HS08270 | 2HS08270 | SPRING BRACKET | 2 |
| | 302HS08320 | 2HS08320 | SPRING COVER MPF | 2,5 |
| | 302HS09070 | 2HS09070 | PAPER INDICATOR | 3 |
| | 302HS09081 | 2HS09081 | CURSOR END | 3 |
| | 302HS09100 | 2HS09100 | LOCK BOTTOM | 3 |
| | 302HS09120 | 2HS09120 | SPRING BOTTOM L | 3 |
| | 302HS09130 | 2HS09130 | SPRING BOTTOM R | 3 |
| | 302HS09140 | 2HS09140 | SPRING LOCK BOTTOM | 3 |
| | 302HS09160 | 2HS09160 | GEAR CASSETTE | 3 |
| | 302HS09180 | 2HS09180 | SPRING RETARD | 3 |
| | 302HS09260 | 2HS09260 | HOLDER RETARD | 3 |
| | 302HS24070 | 2HS24070 | SPRING ACTUATOR REG | 2 |
| | 302HS24120 | 2HS24120 | BUSH REGIST | 4 |
| | 302HS24130 | 2HS24130 | BUSH 4 DU ROLL | 2 |
| | 302HS24140 | 2HS24140 | BUSH 6 EW | 4 |
| ⊙ | 302HS24160 | 2HS24160 | ROLLER DU | 2 |
| | 302HS24181 | 2HS24181 | SHEET REGIST | 4 |
| ⊙ | 302HS24190 | 2HS24190 | GEAR Z14R REG UP | 4 |
| ⊙ | 302HS24200 | 2HS24200 | GEAR Z21L-Z23L REG LOW | 4 |
| ⊙ | 302HS24220 | 2HS24220 | GEAR Z25R DU FEED | 9 |
| ⊙ | 302HS24230 | 2HS24230 | GEAR Z26L DU MID | 9 |
| ⊙ | 302HS24250 | 2HS24250 | BUSH TC R | 4 |
| | 302HS24280 | 2HS24280 | SPRING RELEASE TC L | 4 |
| | 302HS24300 | 2HS24300 | SPRING CONTACT TC | 2 |
| | 302HS24310 | 2HS24310 | SPRING EARTH BRUSH | 4 |
| | 302HS24360 | 2HS24360 | SPRING REGIST C | 4 |
| | 302HS24400 | 2HS24400 | SPRING TC R | 4 |

| | Part.No. | Alternative. | Description | Fig.No. |
|---|------------|--------------|---------------------------------|---------|
| | 302HS24410 | 2HS24410 | ROLLER REGIST LOW | 4 |
| | 302HS24460 | 2HS24460 | BUSH REGIST R | 4 |
| | 302HS28041 | 2HS28041 | COVER FD | 5 |
| ⊙ | 302HS28060 | 2HS28060 | GEAR Z21S | 5 |
| | 302HS28070 | 2HS28070 | PULLEY EXIT | 5 |
| | 302HS28110 | 2HS28110 | SPRING EARTH | 5 |
| | 302HS28120 | 2HS28120 | SPRING EXIT | 5 |
| | 302HS28141 | 2HS28141 | SPRING PULLEY | 5 |
| ⊙ | 302HS28170 | 2HS28170 | GEAR FD Z29S | 5 |
| ⊙ | 302HS28830 | 2HS28830 | ROLLER FD UP B | 5 |
| | 302HS29011 | 2HS29011 | PLATE COVER DU | 10 |
| | 302HS29020 | 2HS29020 | PLATE COVER DU B | 10 |
| | 302HS31041 | 2HS31041 | PLATE GEAR DRIVE | 9 |
| | 302HS31050 | 2HS31050 | LEVER LIFT BOTTOM | 9 |
| ⊙ | 302HS31070 | 2HS31070 | GEAR Z42R FREE 2 | 9 |
| ⊙ | 302HS31090 | 2HS31090 | GEAR Z37L FREE | 9 |
| ⊙ | 302HS31100 | 2HS31100 | GEAR Z20L CLUTCH | 9 |
| ⊙ | 302HS31110 | 2HS31110 | GEAR Z58L | 9 |
| ⊙ | 302HS31120 | 2HS31120 | GEAR Z27L CLUTCH | 9 |
| ⊙ | 302HS31130 | 2HS31130 | GEAR Z45R CLUTCH | 9 |
| ⊙ | 302HS31140 | 2HS31140 | GEAR Z35R IDLE | 9 |
| ⊙ | 302HS31150 | 2HS31150 | GEAR Z31L-Z14S | 9 |
| ⊙ | 302HS31180 | 2HS31180 | GEAR Z44R | 9 |
| ⊙ | 302HS31190 | 2HS31190 | GEAR Z17R FREE | 9 |
| ⊙ | 302HS31200 | 2HS31200 | GEAR Z26L FREE | 9 |
| ⊙ | 302HS31210 | 2HS31210 | GEAR Z35S FREE | 9 |
| ⊙ | 302HS31220 | 2HS31220 | GEAR Z42R FREE | 9 |
| ⊙ | 302HS31230 | 2HS31230 | GEAR Z38S MPF | 9 |
| ⊙ | 302HS31240 | 2HS31240 | GEAR Z32L DRUM | 9 |
| ⊙ | 302HS31250 | 2HS31250 | GEAR Z54R-Z24R | 9 |
| ⊙ | 302HS31260 | 2HS31260 | GEAR Z32R | 9 |
| | 302HS31281 | 2HS31281 | LIFT BOTTOM | 9 |
| | 302HS31310 | 2HS31310 | SPRING FREE FUSER | 9 |
| | 302HS31320 | 2HS31320 | SPRING FREE MAG | 9 |
| | 302HS31330 | 2HS31330 | PIN CLUTCH | 9 |
| | 302HS31340 | 2HS31340 | SHAFT CASSETTE | 9 |
| | 302HS31360 | 2HS31360 | PIN HOLDER A | 9 |
| | 302HS31370 | 2HS31370 | PIN HOLDER B | 9 |
| | 302HS31380 | 2HS31380 | SPRING LIFT BOTTOM | 9 |
| ⊙ | 302HS31390 | 2HS31390 | GEAR Z27R FREE 2 | 9 |
| | 302HS31410 | 2HS31410 | SPRING FREE Z37L | 9 |
| | 302HS31420 | 2HS31420 | EARTH PLATE DRIVE | 9 |
| | 302HS31430 | 2HS31430 | POLYSLIDER 9.5 | 9 |
| | 302HS31440 | 2HS31440 | SPRING FEED | 9 |
| | 302HS34080 | 2HS34080 | LABEL JAM TK OPERATION | 1 |
| | 302HS39040 | 2HS39040 | PLATE OPTION | 11 |
| ⊙ | 302HS44020 | 2HS44020 | SOLENOID MPF | 9 |
| ⊙ | 302HS45013 | 2HS45013 | SWITCHING REGULATOR 230V | 11 |
| ⊙ | 302HS45021 | 2HS45021 | SWITCHING REGULATOR 120V | 11 |
| | 302HS46120 | 2HS46120 | CONN.CORD ASSY PWS-INLET S03238 | 11 |

• Parts with "⊙" indicate regular maintenance parts.

| | Part.No. | Alternative. | Description | Fig.No. |
|---|------------|--------------|-----------------------------------|---------|
| | 302HS46230 | 2HS46230 | CONN.CORD ASSY PANEL-RELAY S03353 | 1 |
| ⊙ | 302HS93070 | 2HS93070 | MC-130 | 6 |
| ⊙ | 302HS94000 | 2HS94000 | PLATE BOTTOM ASSY | 3 |
| ⊙ | 302HS94010 | 2HS94010 | COVER TOP ASSY | 1 |
| ⊙ | 302HS94020 | 2HS94020 | LID TOP ASSY | 1 |
| ⊙ | 302HS94032 | 2HS94032 | HOLDER FEED ASSY | 4 |
| ⊙ | 302HS94040 | 2HS94040 | SEPARATOR MPF ASSY | 2 |
| ⊙ | 302HS94050 | 2HS94050 | PLATE BOTTOM MPF ASSY | 2 |
| ⊙ | 302HS94081 | 2HS94081 | REGIST LOW KIT | 4 |
| ⊙ | 302HS94121 | 2HS94121 | COVER FRONT ASSY (2HS) SP | 1 |
| ⊙ | 302HS94140 | 2HS94140 | COVER TOP B KIT SP | 1 |
| ⊙ | 302HS94150 | 2HS94150 | EMPTY SENSOR KIT SP | 4 |
| ⊙ | 302HS94160 | 2HS94160 | COVER REAR ASSY SP | 5 |
| ⊙ | 302HS94281 | 2HS94281 | HOLDER MCH ASSY | 2 |
| ⊙ | 302HS94320 | 2HS94320 | PARTS PLATE COVER DU B ASSY SP | 10 |
| ⊙ | 302HS94331 | 2HS94331 | PARTS PLATE COVER DU ASSY SP | 10 |
| ⊙ | 302J002010 | 2J002010 | FOOT | 2 |
| ⊙ | 302LY00010 | 2LY00010 | COVER RIGHT ASSY | 1 |
| | 302LY04010 | 2LY04010 | COVER RIGHT | 1 |
| | 302LY04020 | 2LY04020 | COVER RIGHT 2 | 1 |
| ⊙ | 302LY93010 | 2LY93010 | DV-160(E) | 7 |
| ⊙ | 302LY93020 | 2LY93020 | DV-162(U) | 7 |
| ⊙ | 302LY93030 | 2LY93030 | LK-160 | 2 |
| ⊙ | 302LY93040 | 2LY93040 | DV-164(AO) | 7 |
| ⊙ | 302LY94010 | 2LY94010 | PARTS PWB CONTROL SP | 11 |
| ⊙ | 302LY94030 | 2LY94030 | PARTS COVER RIGHT 2 ASSY SP | 1 |
| ⊙ | 302LY94040 | 2LY94040 | PARTS PWB ASSY CONTROL SP | 11 |
| ⊙ | 302LZ00010 | 2LZ00010 | COVER RIGHT ASSY | 1 |
| | 302LZ02100 | 2LZ02100 | SPRING EARTH REG UP | 4 |
| ⊙ | 302LZ04011 | 2LZ04011 | COVER LEFT | 1 |
| | 302LZ04020 | 2LZ04020 | COVER RIGHT | 1 |
| | 302LZ04030 | 2LZ04030 | COVER DIMM | 1 |
| | 302LZ04050 | 2LZ04050 | MOUNT PWB SW | 1 |
| | 302LZ04060 | 2LZ04060 | KEY POWER | 1 |
| | 302LZ04070 | 2LZ04070 | HOLDER KEY SW | 1 |
| | 302LZ04080 | 2LZ04080 | COVER RIGHT 2 | 1 |
| | 302LZ04090 | 2LZ04090 | COVER MAIN SW | 1 |
| ⊙ | 302LZ06011 | 2LZ06011 | ACTUATOR EMPTY A | 4 |
| | 302LZ08020 | 2LZ08020 | GUIDE TURN MPF | 2 |
| | 302LZ09030 | 2LZ09030 | GUIDE RETARD | 3 |
| ⊙ | 302LZ24010 | 2LZ24010 | GEAR Z17L TC | 4 |
| | 302LZ24030 | 2LZ24030 | ACTUATOR REGIST | 2 |
| | 302LZ24090 | 2LZ24090 | SPRING TC L | 4 |
| ⊙ | 302LZ24110 | 2LZ24110 | SPRING REGIST RB | 4 |
| ⊙ | 302LZ24120 | 2LZ24120 | SPRING REGIST LB | 4 |
| | 302LZ24220 | 2LZ24220 | BUSH REGIST C | 4 |
| | 302LZ31040 | 2LZ31040 | SPRING FREE DRUM | 9 |
| ⊙ | 302LZ46030 | 2LZ46030 | CONN.CORD ASSY S03808 | 11 |
| ⊙ | 302LZ93010 | 2LZ93010 | DV-170(E) | 7 |
| ⊙ | 302LZ93020 | 2LZ93020 | DV-172(U) | 7 |

| | Part.No. | Alternative. | Description | Fig.No. |
|---|-----------------|--------------|-----------------------------------|---------|
| ⊙ | 302LZ93030 | 2LZ93030 | LK-170 | 2 |
| ⊙ | 302LZ93040 | 2LZ93040 | FK-170(E) | 8 |
| ⊙ | 302LZ93050 | 2LZ93050 | FK-170(U) | 8 |
| ⊙ | 302LZ93061 | 2LZ93061 | DK-170 | 6 |
| ⊙ | 302LZ93071 | 2LZ93071 | CT-170 | 3 |
| ⊙ | 302LZ93080 | 2LZ93080 | DV-174(AO) | 7 |
| ⊙ | 302LZ94010 | 2LZ94010 | PARTS PWB ERASER SP | 2 |
| ⊙ | 302LZ94022 | 2LZ94022 | PARTS MOTOR ASSY SP | 9 |
| ⊙ | 302LZ94030 | 2LZ94030 | PARTS MOTOR FAN 80 SP | 11 |
| ⊙ | 302LZ94041 | 2LZ94041 | PARTS HIGH VOLTAGE UNIT SP | 11 |
| ⊙ | 302LZ94050 | 2LZ94050 | PARTS ROLLER REGIST UP SP | 4 |
| ⊙ | 302LZ94060 | 2LZ94060 | PARTS ROLLER TRANSFER E SP | 4 |
| ⊙ | 302LZ94070 | 2LZ94070 | PARTS ROLLER TRANSFER A SP | 4 |
| ⊙ | 302LZ94080 | 2LZ94080 | PARTS PWB CONTROL SP | 11 |
| ⊙ | 302LZ94090 | 2LZ94090 | PARTS TRAY MPF ASSY SP | 2 |
| ⊙ | 302LZ94100 | 2LZ94100 | PARTS FD ASSY (2LZ) SP | 5 |
| ⊙ | 302LZ94140 | 2LZ94140 | PARTS COVER RIGHT 2 ASSY SP | 1 |
| ⊙ | 302LZ94160 | 2LZ94160 | PARTS PWB ASSY CONTROL SP | 11 |
| ⊙ | 302LZ94170 | 2LZ94170 | PARTS SWITCHING REGULATOR 230V SP | 11 |
| ⊙ | 302LZ94180 | 2LZ94180 | PARTS PWB ASSY SWITCH SP | 1 |
| ⊙ | 302PG00020 | 2PG00020 | COVER RIGHT ASSY | 1 |
| | 302PG04020 | 2PG04020 | COVER RIGHT | 1 |
| | 302PG04030 | 2PG04030 | COVER RIGHT 2 | 1 |
| | 302PG04070 | 2PG04070 | BUTTON ENTER | 1 |
| ⊙ | 302PG94010 | 2PG94010 | PARTS COVER RIGHT 2 ASSY SP | 1 |
| ⊙ | 302PG94020 | 2PG94020 | PARTS SWITCHING REGULATOR 230V SP | 11 |
| ⊙ | 302PG94030 | 2PG94030 | PARTS PWB ASSY MAIN SP | 11 |
| ⊙ | 302PG94040 | 2PG94040 | PARTS PWB ASSY MAIN EU SP | 11 |
| ⊙ | 302PH00020 | 2PH00020 | COVER RIGHT ASSY | 1 |
| | 302PH04010 | 2PH04010 | COVER RIGHT | 1 |
| | 302PH04020 | 2PH04020 | COVER RIGHT 2 | 1 |
| ⊙ | 302PH93010 | 2PH93010 | FK-171(E) | 8 |
| ⊙ | 302PH93020 | 2PH93020 | FK-171(U) | 8 |
| ⊙ | 302PH94010 | 2PH94010 | PARTS COVER RIGHT 2 ASSY SP | 1 |
| ⊙ | 302PH94020 | 2PH94020 | PARTS PWB ASSY MAIN SP | 11 |
| ⊙ | 302PH94030 | 2PH94030 | PARTS PWB ASSY MAIN EU SP | 11 |
| | 5MBCK9560XSC | D4103700 | C STOP RING /X9.5 X 0.6T S-CR | 10 |
| | 5MMW171LD006 | 2A807530 | SPRING STOPPER /A49 CASSETTE A4 | 3 |
| | 5MMW261LD036 | 2A814570 | SPRING TE SENSOR /A-49 DLP A4 | 4 |
| | 5MMW261LD067 | 2FV02270 | SPRING LEVER LOCK L | 4 |
| | 5MMW261LD068 | 2FV02280 | SPRING LEVER LOCK R | 4 |
| | 5MVG137DN032 | 2A806720 | GEAR MPF /A-49 MPF A4 | 2 |
| | 5MVM273DB005 | 2A820100 | PULLEY EXIT /A-49 FUSER A3 | 4,5 |
| ⊙ | 5MVX111DN003 | 2A806250 | RING STOPPER /A-49 FEED A4 | 4,9,10 |
| | 5MVX111DN007 | 2BT11070 | STOPPER 3 /2BT1107 A4 | 5 |
| ⊙ | 5MVX431DN005 | 2FV02100 | LEVER LOCK DLP | 4 |
| | 5MVX541DG002 | 2A807191 | LEVER REAR /A-49 CASSETTE A3 | 3 |
| | 5MVX541DG003 | 2A807161 | LEVER SIDE /A-49 CASSETTE A3 | 3 |
| | 7AAACCUS+10H001 | AA068380 | AC CORD ASSY US | 11 |
| | 7BC06062C020H01 | BC045240 | POLY SLIDER WASHER M6.2X12X0.2T | 9 |

• Parts with "⊙" indicate regular maintenance parts.

| | Part.No. | Alternative. | Description | Fig.No. |
|--|---|--|--|------------------|
| | 7BC460529080H01 7NXSG2481+++H01 7RHA2H10701+H01 M2107250 | BC059590 NX052600 RH043740 M2107250 | CUT WASHER 5.2X9.0X0.8T(BLACK) SENSOR OPT. M.GLAZE R. 100MJ 1/2W BAND,RSG-100(KITAGAWA) | 4 4 2 9 |

• Parts with "⊙" indicate regular maintenance parts.

KYOCERA Document Solutions America, Inc.**Headquarters**

225 Sand Road,
Fairfield, New Jersey 07004-0008, USA
Phone: +1-973-808-8444
Fax: +1-973-882-6000

Latin America

8240 NW 52nd Terrace Dawson Building, Suite 100
Miami, Florida 33166, USA
Phone: +1-305-421-6640
Fax: +1-305-421-6666

KYOCERA Document Solutions Canada, Ltd.

6120 Kestrel Rd., Mississauga, ON L5T 1S8,
Canada
Phone: +1-905-670-4425
Fax: +1-905-670-8116

KYOCERA Document Solutions**Mexico, S.A. de C.V.**

Calle Arquimedes No. 130, 4 Piso, Colonia Polanco
Chapultepec, Delegacion Miguel Hidalgo,
Distrito Federal, C.P. 11560, México
Phone: +52-555-383-2741
Fax: +52-555-383-7804

KYOCERA Document Solutions Brazil, Ltda.

Alameda África, 545, Pólo Empresarial Consbrás,
Tamboré, Santana de Parnaíba-SP, CEP 06543-306,
Brazil
Phone: +55-11-4195-8496
Fax: +55-11-4195-6167

KYOCERA Document Solutions**Australia Pty. Ltd.**

Level 3, 6-10 Talavera Road North Ryde N.S.W, 2113,
Australia
Phone: +61-2-9888-9999
Fax: +61-2-9888-9588

KYOCERA Document Solutions**New Zealand Ltd.**

Ground Floor, 19 Byron Avenue, Takapuna, Auckland,
New Zealand
Phone: +64-9-415-4517
Fax: +64-9-415-4597

KYOCERA Document Solutions Asia Limited

16/F., Mita Centre, 552-566, Castle Peak Road
Tsuenwan, NT, Hong Kong
Phone: +852-2610-2181
Fax: +852-2610-2063

KYOCERA Document Solutions**(China) Corporation**

8F, No. 288 Nanjing Road West, Huangpu District,
Shanghai, 200003, China
Phone: +86-21-5301-1777
Fax: +86-21-5302-8300

KYOCERA Document Solutions**(Thailand) Corp., Ltd.**

335 Ratchadapisek Road, Bangsue, Bangkok 10800,
Thailand
Phone: +66-2-586-0333
Fax: +66-2-586-0278

KYOCERA Document Solutions**Singapore Pte. Ltd.**

12 Tai Seng Street #04-01A,
Luxasia Building, Singapore 534118
Phone: +65-6741-8733
Fax: +65-6748-3788

KYOCERA Document Solutions**Hong Kong Limited**

16/F., Mita Centre, 552-566, Castle Peak Road
Tsuenwan, NT, Hong Kong
Phone: +852-3582-4000
Fax: +852-3185-1399

KYOCERA Document Solutions**Taiwan Corporation**

6F., No.37, Sec. 3, Minquan E. Rd.,
Zhongshan Dist., Taipei 104, Taiwan R.O.C.
Phone: +886-2-2507-6709
Fax: +886-2-2507-8432

KYOCERA Document Solutions Korea Co., Ltd.

18F, Kangnam bldg, 1321-1,
Seocho-Dong, Seocho-Gu, Seoul, Korea
Phone: +822-6933-4050
Fax: +822-747-0084

KYOCERA Document Solutions**India Private Limited**

First Floor, ORCHID CENTRE
Sector-53, Golf Course Road, Gurgaon 122 002,
India
Phone: +91-0124-4671000
Fax: +91-0124-4671001

KYOCERA Document Solutions Europe B.V.

Bloemlaan 4, 2132 NP Hoofddorp,
The Netherlands
Phone: +31-20-654-0000
Fax: +31-20-653-1256

KYOCERA Document Solutions Nederland B.V.

Beechavenue 25, 1119 RA Schiphol-Rijk,
The Netherlands
Phone: +31-20-5877200
Fax: +31-20-5877260

KYOCERA Document Solutions (U.K.) Limited

Eldon Court, 75-77 London Road,
Reading, Berkshire RG1 5BS,
United Kingdom
Phone: +44-118-931-1500
Fax: +44-118-931-1108

KYOCERA Document Solutions Italia S.p.A.

Via Verdi, 89/91 20063 Cernusco s/N.(MI),
Italy
Phone: +39-02-921791
Fax: +39-02-92179-600

KYOCERA Document Solutions Belgium N.V.

Sint-Martinusweg 199-201 1930 Zaventem,
Belgium
Phone: +32-2-7209270
Fax: +32-2-7208748

KYOCERA Document Solutions France S.A.S.

Espace Technologique de St Aubin
Route de l'Orme 91195 Gif-sur-Yvette CEDEX,
France
Phone: +33-1-69852600
Fax: +33-1-69853409

KYOCERA Document Solutions Espana, S.A.

Edificio Kyocera, Avda. de Manacor No.2,
28290 Las Matas (Madrid), Spain
Phone: +34-91-6318392
Fax: +34-91-6318219

KYOCERA Document Solutions Finland Oy

Atomitie 5C, 00370 Helsinki,
Finland
Phone: +358-9-47805200
Fax: +358-9-47805390

**KYOCERA Document Solutions
Europe B.V., Amsterdam (NL) Zürich Branch**

Hohlstrasse 614, 8048 Zürich,
Switzerland
Phone: +41-44-9084949
Fax: +41-44-9084950

**KYOCERA Document Solutions
Deutschland GmbH**

Otto-Hahn-Strasse 12, 40670 Meerbusch,
Germany
Phone: +49-2159-9180
Fax: +49-2159-918100

KYOCERA Document Solutions Austria GmbH

Eduard-Kittenberger-Gasse 95, 1230 Vienna,
Austria
Phone: +43-1-863380
Fax: +43-1-86338-400

KYOCERA Document Solutions Nordic AB

Esbogatan 16B 164 75 Kista, Sweden
Phone: +46-8-546-550-00
Fax: +46-8-546-550-10

KYOCERA Document Solutions Norge Nuf

Postboks 150 Oppsal, 0619 Oslo,
Norway
Phone: +47-22-62-73-00
Fax: +47-22-62-72-00

KYOCERA Document Solutions Danmark A/S

Ejby Industrivej 60, DK-2600 Glostrup,
Denmark
Phone: +45-70223880
Fax: +45-45765850

KYOCERA Document Solutions Portugal Lda.

Rua do Centro Cultural, 41 (Alvalade) 1700-106 Lisboa,
Portugal
Phone: +351-21-843-6780
Fax: +351-21-849-3312

**KYOCERA Document Solutions
South Africa (Pty) Ltd.**

KYOCERA House, Hertford Office Park,
90 Bekker Road (Cnr. Allandale), Midrand, South Africa.
Phone: +27-11-540-2600
Fax: +27-11-466-3050

KYOCERA Document Solutions Russia LLC

Botanichesky pereulok 5, Moscow, 129090,
Russia
Phone: +7(495)741-0004
Fax: +7(495)741-0018

KYOCERA Document Solutions Middle East

Dubai Internet City, Bldg. 17,
Office 157 P.O. Box 500817, Dubai,
United Arab Emirates
Phone: +971-04-433-0412

KYOCERA Document Solutions Inc.

2-28, 1-chome, Tamatsukuri, Chuo-ku
Osaka 540-8585, Japan
Phone: +81-6-6764-3555
<http://www.kyoceradocumentsolutions.com>

© 2014 KYOCERA Document Solutions Inc.

 is a trademark of KYOCERA Corporation