



Ecosys FS-9120DN/FS-9520DN Laser Printers

PARTS LIST

Published in April 2005
2FJPL075 2FHPL075
842FJ125 842FH125
Version 6.0

NOTES

1. Indicate parts number and machine model when placing an order.

e.g.	Parts Number	Parts Name	Machine Model	Cycle	Quantity
	2FJ04010	RIGHT FRONT COVER	FS-9120DN	50Hz	1
	2FH04010	RIGHT FRONT COVER	FS-9520DN	50Hz	1
	2FJ04010	RIGHT FRONT COVER	FS-9120DN	60Hz	1
	2FH04010	RIGHT FRONT COVER	FS-9520DN	60Hz	1

2. Service calls and freight will be charged separately.

3. Symbols in the "Parts Number" column.

- Parts with "⊙" indicates the spare parts and the parts without "⊙" can not be supplied.

- Parts with "•" are component parts or sub-assemblies of the assembly appearing immediately above them.

e.g.	Parts Number	Parts Name	Parts Number	Parts Name
	2FH93100	PARTS, FEED UNIT FE-702	•2BL16080	PULLEY FEED
			•2FG16280	SHAFT FEED

- Parts with "••" are component parts or sub-assembly with "•" appearing immediately above them.

e.g.	Parts Number	Parts Name	Parts Number	Parts Name
	•2FH93040	PARTS, TR-702,SP	••2BL17010	HOUSING TRANSFER
			••2BL17021	ROLLER TRANSFER

4. Items indicated in Description column as (OPTION) are supply parts and should be ordered through your Regional Office.

— CONTENTS —

FIG. 1	Enclosure.....	2	FIG. 11	LSU	24
FIG. 2	Upper Frame Unit.....	4	FIG. 12	Developer unit	26
FIG. 3	Paper cassette.....	6	FIG. 13	Fuser unit	28
FIG. 4	Paper feed unit, 1	8	FIG. 14	Cleaning system.....	30
FIG. 5	Paper feed unit, 2	10	FIG. 15	Drive unit, 1	32
FIG. 6	Paper feed unit, 3	14	FIG. 16	Drive unit, 2	34
FIG. 7	Paper conveyers.....	16	FIG. 17	Electrical components	36
FIG. 8	Paper exit	18	FIG. 18	Option.....	40
FIG. 9	Bypass unit.....	20	FIG. 19	Parts Packages	42
FIG. 10	Bypass feed unit.....	22			

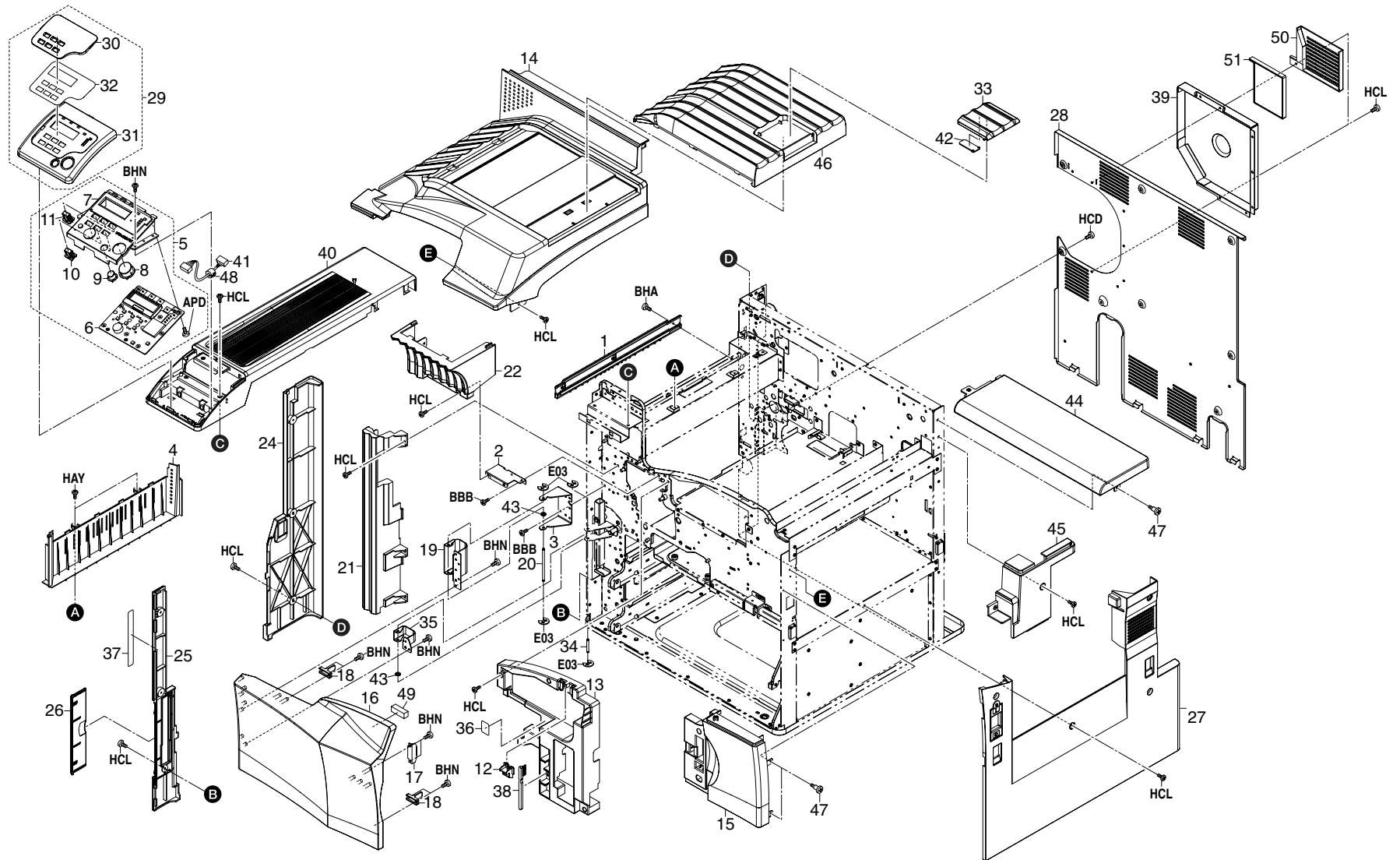


FIG. 1 Enclosure

2FJ/2FH-4

SP	Ref.No.	Part.No.	Alternative.	Description	Applicable Model	Quantity		SP	Ref.No.	Part.No.	Alternative.	Description	Applicable Model	Quantity	
						120V	230V							120V	230V
	1	2BL21350		GUIDE DU FEED R		1	1	⊙	33	2BK04030		STOPPER PAPER C	FS-9120DN	1	1
	2	2FG02010		MOUNT TRAY EJECT		1	1	⊙	33	2BL04400		STOPPER PAPER P	FS-9520DN	1	1
	3	2BL04220		MOUNT HINGE		1	1		34	2BL04840		PIN COVER HINGE S		1	1
⊙	4	2BL04100		COVER EXIT LOW		1	1		35	2BL04480		FRONT COVER HINGE S		1	1
⊙	5	2FH93070		PARTS, OPERATION ASSY		1	1		36	2BL05070		LABEL SEP CLEANING		1	1
	6	2FH68040	5AAYB10E++03	PANEL PWB ASSY /B09/10 PANEL PWB		1	1	⊙	37	2BL05120		LABEL CONVEYING JAM		1	1
	7	•2BL04240		LOWER COVER KEY		1	1	⊙	38	5AAVBRUSH036	2BL16220	BRUSH CLEANER ASSY		1	1
	8	•2BL04260		KEY OPERATION A		1	1	⊙	39	2BL04710		COVER FLYWHEEL		1	1
	9	•2BL04270		KEY OPERATION B		1	1	⊙	40	2BL04170		LEFT TOP COVER		1	1
	10	•2BL04280		KEY OPERATION C		3	3		41	2BL27270		WIRE OPE FRONT (P)		1	1
	11	•2BL04050		KEY OPERATION D		3	3	⊙	42	2BK04040		STOPPER PAPER SUB	FS-9120DN	1	1
	12	2BL04200		LEVER CONT RELEASE		1	1		43	2BL04880		FILM HINGE		2	2
	13	2BL04090		INNER RIGHT COVER		1	1	⊙	44	2BL04181		REAR TOP COVER		1	1
⊙	14	2BL04040		TRAY EJECT		1	1	⊙	45	2BL04210		RIGHT TOP COVER		1	1
⊙	15	2FH04010		RIGHT FRONT COVER	FS-9520DN	1	1	⊙	46	2BK04020		TRAY SUB C	FS-9120DN	1	1
⊙	15	2FJ04010		RIGHT FRONT COVER	FS-9120DN	1	1	⊙	46	2BL04340		TRAY SUB	FS-9520DN	1	1
⊙	16	2BJ04600		FRONT COVER MIDDLE K		1	1		47	2BL04410		PIN COVER		3	3
	17	60804120		MAGNET CATCH		1	1		48	33927590		CORE 7-15X18		1	1
⊙	18	2BL04330		HOLDER SWITCH		2	2	⊙	49	2BL06620		SPONGE FRONT		1	1
	19	2BL04350		FRONT HINGE COVER P		1	1		50	2FG23040	302FG23040	MOUNT OZONE FILTER B			1
	20	2BL04190		PIN COVER HINGE		1	1	⊙	51	2FG23050	302FG23050	FILTER OZONE B			1
⊙	21	2BL04150		LEFT COVER CASSETTE		1	1								
⊙	22	2BL04010		LEFT FRONT COVER		1	1								
⊙	24	2BL04120		REAR LEFT COVER		1	1								
⊙	25	2BL04110		FRONT LEFT COVER		1	1								
⊙	26	2BL04300		LID COVER LEFT		1	1								
⊙	27	2BL04131	302BL04131	RIGHT COVER		1	1								
⊙	28	2BL04071		REAR COVER		1	1								
⊙	29	2BL93330		PARTS, UPPER COVER KEY ASY	Excl.KMFR/KMIT	1	1								
⊙	29	2BL93340		PARTS, UPPER COVER KEY FR	KMFR only		1								
⊙	29	2BL93350		PARTS, UPPER COVER KEY IT	KMIT only		1								
	30	•2BL04250		COVER LCD	Excl.KMFR/KMIT	1	1								
	30	•2BL04810		COVER LCD I	KMIT only		1								
	30	•2BL04830		COVER LCD F	KMFR only		1								
	31	•2BL04230		UPPER COVER KEY	Excl.KMFR/KMIT	1	1								
	31	•2BL04800		UPPER COVER KEY I	KMIT only		1								
	31	•2BL04820		UPPER COVER KEY F	KMFR only		1								
	32	•2BL04960		FILM OPERATION	Excl.KMFR/KMIT	1	1								
	32	•2BL04970		FILM OPERATION I	KMIT only		1								
	32	•2BL04980		FILM OPERATION F	KMFR only		1								

- Parts with "*" are component parts or sub-assemblies of the assembly appearing immediately above them.
- Parts with "⊙" indicates the spare parts.

- Parts with "••" are component parts or sub-assembly with "*" appearing immediately above them.

FIG. 2 Upper Frame Unit

2FJ/2FH-4

SP	Ref.No.	Part.No.	Alternative.	Description	Applicable Model	Quantity		SP	Ref.No.	Part.No.	Alternative.	Description	Applicable Model	Quantity	
						120V	230V							120V	230V
	1	2BL02010		FRONT FRAME		1			49	•2AR07710		MOUNT, PAPER FEED DRAWER		2	2
	1	2FG02040	302FG02040	FRONT FRAME			1		50	•2AR27600		JUNCTION WIRING, PRIMARY PAPER FEED UNIT		2	2
	2	2BL02020		REAR FRAME		1			51	•33927450		RETAINING PIN, DRAWER		4	4
	2	2FG02050	302FG02050	REAR FRAME			1	⊙	52	•J0464080		RECEPTACLE, QR/P15-8S-C (02) (HIROSE)		2	2
	3	2BL02030		BASE		1	1								
	4	2BL02040		BASE MIDDLE		1	1								
	5	2BL04290		MOUNT OPERATION		1	1								
	6	2BL05150		LABEL RADIATION		1	1								
	9	2AR00030		LOWER LEFT REINFORCEMENT ASSY		1	1								
	10	•2AR02060		LOWER LEFT REINFORCEMENT		1	1								
⊙	11	•2AR07140		LEFT RAIL, CASSETTE		2	2								
	12	•2AR07800		PULLEY, CASSETTE RAIL		4	4								
	13	•2AR07810		FRONT PIN, CASSETTE RAIL		2	2								
	14	•2AR07820		REAR PIN, CASSETTE RAIL		2	2								
	15	•M2104350		EDGING, EDS-0607M (KITAGAWA)		1	1								
	16	•M2109330		WIRE SADDLE, YMC-10-0 (KITAGAWA)		1	1								
	17	2AR00020		LOWER RIGHT REINFORCEMENT ASSY		1	1								
⊙	18	•2AR02050		LOWER RIGHT REINFORCEMENT		1	1								
	19	•2AR07800		PULLEY, CASSETTE RAIL		4	4								
	20	•2AR07810		FRONT PIN, CASSETTE RAIL		2	2								
	21	•2AR07820		REAR PIN, CASSETTE RAIL		2	2								
	22	2BL02100		UPPER PLATE FIXING		1	1								
	23	2BL02060		UPPER PLATE DRUM		1	1								
	24	2BL02130		LOWER PLATE CONT		1	1								
	25	2BL02050		LOWER BASE LSU		1	1								
	27	77906291		HOLDER, CASSETTE STOPPER		2	2								
	28	2BL02140		HANDLE MACHINE		1	1								
	29	2BL06840		SPRING BYPASS RET		1	1								
	30	2AR02180		BASE RUBBER		4	4								
	31	2BL02120		UPPER RIGHT PLATE		1	1								
	32	2BL02180		RIGHT HANDLE MACHINE		3	3								
	33	2BL02150		MOUNT RIGHT HANDLE		3	3								
	35	2BL06590		PULLEY RAIL		4	4								
	36	2BL04470		MOUNT HINGE S		1	1								
	37	2BL06410		GROUND PLATE MIDDLE		1	1								
	38	2AR07720		COVER, CASSETTE RAIL		1	1								
	40	2BL02200		MOUNT REAR COVER		1	1								
	46	2BL02170		PIN HANDLE		2	2								
	47	M2109330		WIRE SADDLE, YMC-10-0 (KITAGAWA)		3	3								
	48	2AR00610		PAPER FEED DRAWER ASSY		2	2								

- Parts with "•" are component parts or sub-assemblies of the assembly appearing immediately above them.
- Parts with "⊙" indicates the spare parts.

- Parts with "••" are component parts or sub-assembly with "•" appearing immediately above them.

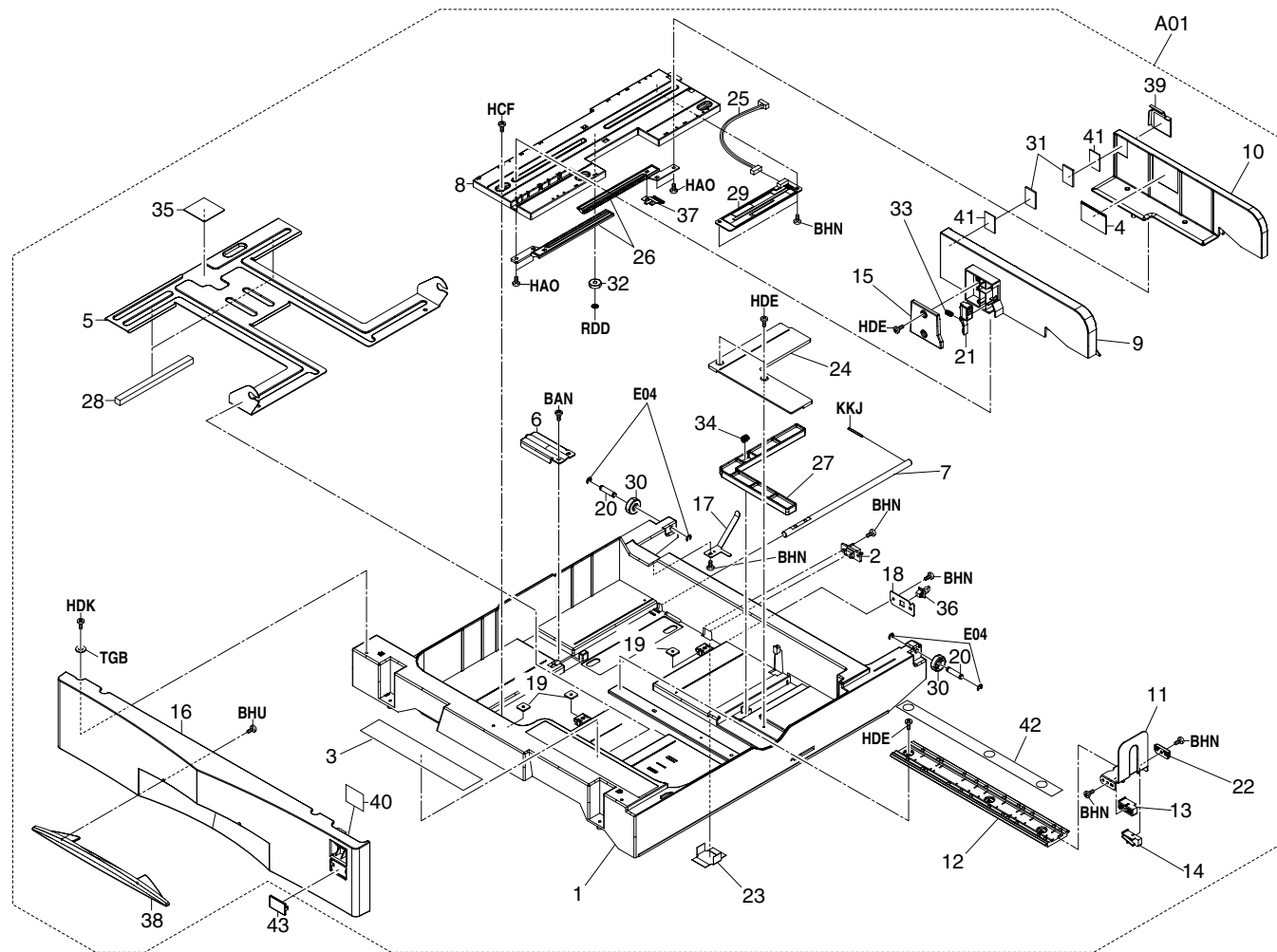


FIG. 3 Paper cassette

2FJ/2FH-4

SP	Ref.No.	Part.No.	Alternative.	Description	Applicable Model	Quantity		SP	Ref.No.	Part.No.	Alternative.	Description	Applicable Model	Quantity	
						120V	230V							120V	230V
⊙	A01	2BL93113		PARTS,PC700(A4)			2		39	•2BL05260		LABEL CASSETTE SIZE		2	2
⊙	A01	2BL93123		PARTS,PC700(LTR)		2	2	⊙	40	•2BL06470	5MVS446VE001	PLATE SIZE C		2	2
	1	•2AR07011		CASSETTE		2	2	⊙	40	•2BL06910	5MVS446VE002	PLATE SIZE IN		2	2
	2	•J0463080		PLUG, QR/P15-8S-C (HIROSE)		2	2		41	•2BL06980		MOUNT CUSHION		4	4
	3	•2AR05150		LABEL, CASSETTE OPERATION		2	2		42	•2BJ68190		STOPPER PAPER SP		2	2
	4	•2AR05200		LABEL, PAPER UPPER LIMIT		2	2	⊙	43	2BL04310		PLATE NUMBER		1	1
	5	•2AR07020		BASE, CASSETTE		2	2	⊙	43	2BL04370		PLATE NUMBER 2		1	1
	6	•2AR07030		WORK PLATE, CASSETTE BASE		2	2								
	7	•2AR07040		SHAFT, WORK PLATE		2	2								
	8	•2AR07052		RAIL A, CURSOR		2	2								
	9	•2AR07060		CURSOR A, CASSETTE		2	2								
	10	•2AR07071		CURSOR B, CASSETTE		2	2								
	11	•2AR07080		CURSOR C, CASSETTE		2	2								
	12	•2AR07091		RAIL C, CURSOR		2	2								
	13	•2AR07100		FRONT GUIDE C, CURSOR		2	2								
	14	•2AR07110		REAR GUIDE C, CURSOR		2	2								
	15	•2AR07120		LID A, CURSOR		2	2								
⊙	16	•2BL04140		COVER CASSETTE		2	2								
⊙	17	•2AR07150		GROUND PLATE, CASSETTE		2	2								
	18	•2AR07160		MOUNT, CASSETTE STOPPER		2	2								
	19	•2AR07180		RETAINER M4		6	6								
	20	•2AR07190		SHAFT, CASSETTE PULLEY		4	4								
	21	•2FG07010		LEVER A, CURSOR		2	2								
	22	•2AR07610		STOPPER, TRAILING EDGE DETECTION		2	2								
	23	•2AR07620		PROTECTING PLATE, CASSETTE WIRE		2	2								
	24	•2AR07630		LID, TRAILING EDGE DETECTION PLATE		2	2								
	25	•2AR27220		WIRE, CASSETTE UNIT		2	2								
⊙	26	•3CY06090		RACK CURSOR		4	4								
	27	•33907170		DETECTION PLATE, PAPER SIZE		2	2								
⊙	28	•33907210		CUSHION, CASSETTE WORK PLATE		4	4								
⊙	29	•2FG01020		SIZE DETECTION ASS'Y		2	2								
⊙	30	•34907150		PULLEY, CASSETTE		4	4								
⊙	31	•60907170		CUSHION, CASSETTE R		4	4								
⊙	32	•3CY06100		GEAR 20,CURSOR		2	2								
	33	•66007120		SPRING, CURSOR C		2	2								
⊙	34	•66106080		SPRING, PAD		2	2								
⊙	35	•66107100		PAD, CASSETTE		2	2								
	36	•77906210		CASSETTE STOPPER		2	2								
	37	•2BC07860		TERMINAL,PAPER SIZE DETECTION		2	2								
⊙	38	•2BL04160	5MVX843CH003	HANDLE CASSETTE		2	2								

- Parts with "•" are component parts or sub-assemblies of the assembly appearing immediately above them.
- Parts with "⊙" indicates the spare parts.

- Parts with "••" are component parts or sub-assembly with "•" appearing immediately above them.

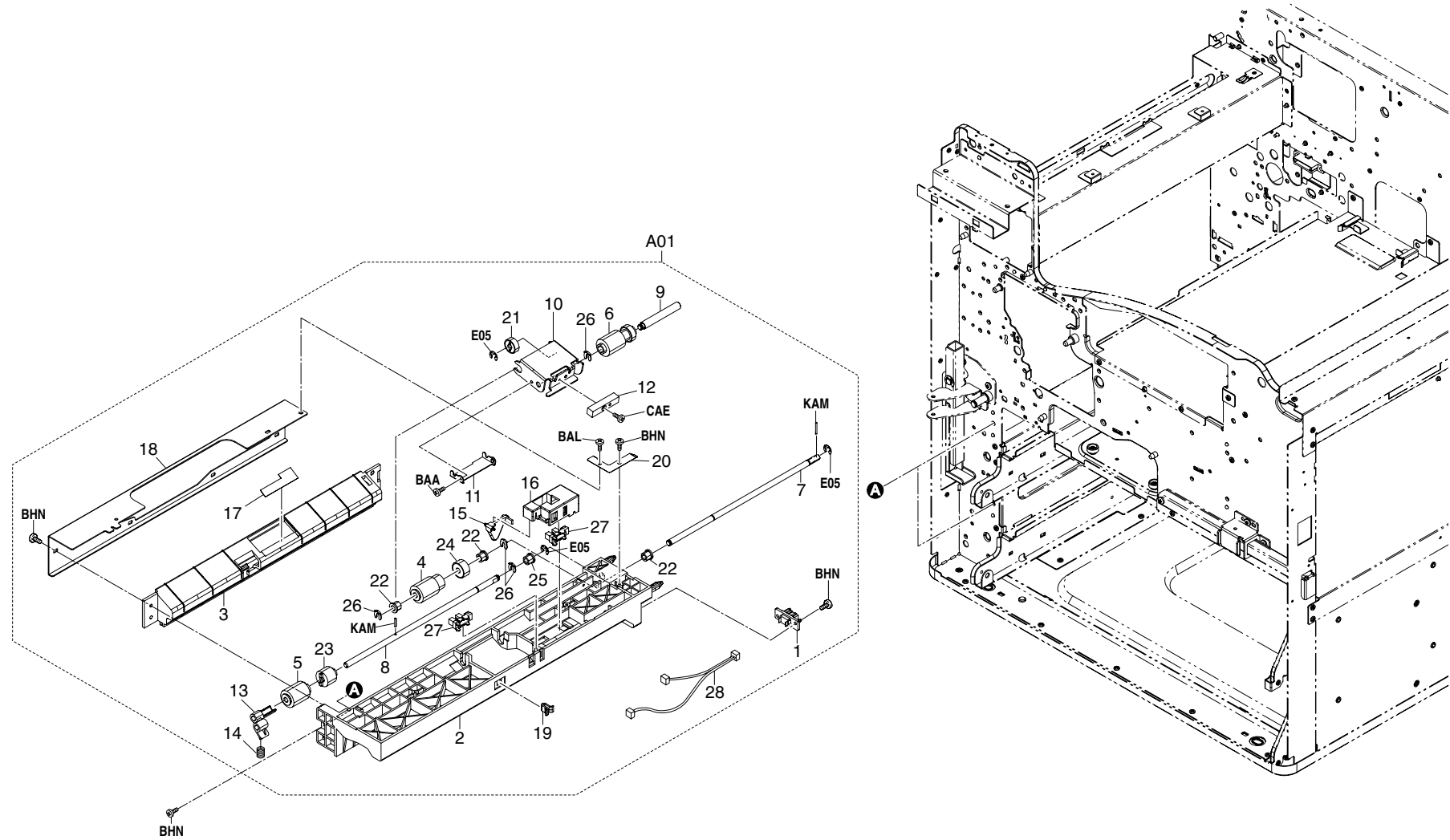


FIG. 4 Paper feed unit, 1

2FJ/2FH-4

SP	Ref.No.	Part.No.	Alternative.	Description	Applicable Model	Quantity	
						120V	230V
⊙	A01	2BJ00020		PAPER FEED ASSY(CHN)		2	2
⊙	1	•J0463080		PLUG, QR/P15-8S-C (HIROSE)		2	2
	2	•2AR07200		UPPER HOUSING, PAPER FEED		2	2
	3	•2AR07210		LOWER HOUSING, PAPER FEED		2	2
⊙	4	•2AR07220		PULLEY, PAPER FEED		2	2
⊙	5	•2AR07230		PULLEY, SEPARATION		2	2
⊙	6	•2BJ06010		PULLEY FEED A		2	2
	7	•2AR07250		SHAFT, PAPER FEED		2	2
	8	•2AR07260		SHAFT, SEPARATION		2	2
	9	•2AR07270		SHAFT, LEADING FEED		2	2
	10	•2BL07910		SUPPORT PLATE FEED		2	2
	11	•2BL07900		PLATE LEADING FEED		2	2
	12	•2AR07300		WEIGHT, LEADING FEED PULLEY		2	2
	13	•2AR07310		LEVER, SEPARATION PULLEY RELEASE		2	2
⊙	14	•2BL07990		SPRING SEPARATION		2	2
	15	•2AR07640		ACTUATOR, PAPER EMPTY		2	2
	16	•2AR07650		HOLDER, ACTUATOR		2	2
	17	•2AR07660		GUIDE FILM, SEPARATION PULLEY		2	2
	18	•2AR07670		REINFORCEMENT, PRIMARY PAPER FEED		2	2
	19	•2AR07690		STOPPER, SUPPORT PLATE		2	2
	20	•2AR07790		GROUND PLATE, PRIMARY PAPER FEED		2	2
⊙	21	•34922420		GEAR 15		2	2
⊙	22	•29806810		BUSHING, 6 REGISTRATION		6	6
⊙	23	•33906070		TORQUE LIMITER, PAPER FEED		2	2
⊙	24	•33906160		GEAR 16, PAPER FEED		2	2
⊙	25	•34806040		LOWER BUSHING, PAPER FEED		2	2
⊙	26	•2A806250		RING STOPPER		8	8
⊙	27	•35327400		SWITCH FEED		4	4
	28	•2AR27430		WIRE, PRIMARY PAPER FEED UNIT		2	2

- Parts with "•" are component parts or sub-assemblies of the assembly appearing immediately above them.
- Parts with "⊙" indicates the spare parts.

- Parts with "••" are component parts or sub-assembly with "•" appearing immediately above them.

FIG. 5 Paper feed unit, 2

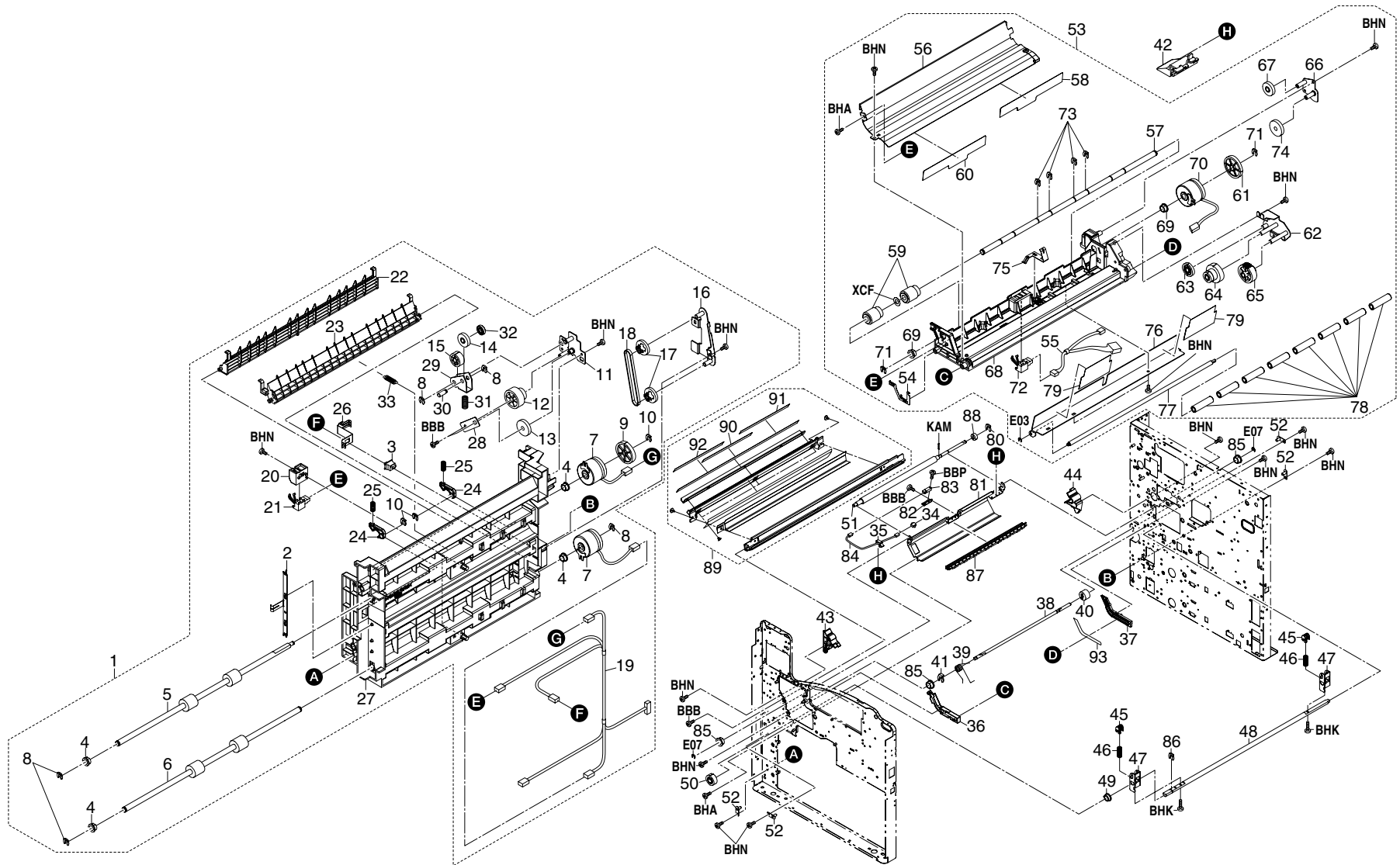


FIG. 5 Paper feed unit, 2

2FJ/2FH-4

SP	Ref.No.	Part.No.	Alternative.	Description	Applicable Model	Quantity		SP	Ref.No.	Part.No.	Alternative.	Description	Applicable Model	Quantity	
						120V	230V							120V	230V
⊙	1	2FG93080		PARTS,VERTICAL FEED ASSY,SP		1	1	⊙	41	33973300		STOPPER 7, CARTRIDGE		1	1
	2	•2BL06220		EARTH VERTICAL FEED		1	1		42	2BL06430		COVER CONNECTOR		1	1
⊙	3	•35927420		SWITCH,SIZE		1	1		43	2FG16160		GUIDE ROLLER F		1	1
⊙	4	•67322230		BUSHING 8		4	4		44	2FG16170		GUIDE ROLLER R		1	1
⊙	5	•2BL06080		ROLLER B FEED		1	1		45	2BL14240		CAM DLP		2	2
⊙	6	•2BL06090		ROLLER C FEED		1	1		46	2BL14410		SPRING CAM		2	2
⊙	7	•2FG27160		CLUTCH FEED		2	2		47	2BL14140		MOUNT CAM		2	2
⊙	8	•2BC06980		STOPPER 5		5	5		48	2BL14230		SHAFT CAM		1	1
⊙	9	•2BL06170		GEAR Z42 FEED		1	1		49	2BM17920	5MVM122DB003	BUSH POM		1	1
⊙	10	•2A806250		RING STOPPER		3	3		50	2BL14250		GEAR 18		1	1
	11	•2FG06020		MOUNT FEED DRIVE A		1	1	⊙	51	2FG06210		RIGHT ROLLER REGIST		1	1
⊙	12	•2FG06040		GEAR Z21-36 FEED		1	1		52	2AR02250		POSITIONING PLATE,LSU		4	4
⊙	13	•36222250		GEAR 30,IDLE		1	1	⊙	53	2FG93062		PARTS,MIDDLE FEED ASSY		1	1
⊙	14	•2AL06110		GEAR 25		1	1		54	•2BL06230		GROUND PLATE A FEED		1	1
⊙	15	•2BL06380		GEAR Z25 JOINT		1	1		55	•2BL27240		WIRE FEED 1		1	1
	16	•2BL06130		MOUNT C FEED DRIVE		1	1		56	•2BL06020		GUIDE A FEED		1	1
⊙	17	•2BL06180		GEAR Z28-P18 FEED		2	2		57	•2BL06920		SHAFT FEED A		1	1
⊙	18	•2BL06320		BELT CONVEYING		1	1	⊙	58	•2BL06480		FILM REGIST F		1	1
	19	•2BL27190		WIRE CONVEYING		1	1	⊙	59	•2BL06930		PULLEY FEED		2	2
	20	•2BL06450		HOLDER FEED SWITCH		2	2		60	•2BL06970		FILM REGIST FF		1	1
⊙	21	•2BL27410		SWITCH CONVEYING		2	2	⊙	61	•2BL06360		GEAR Z42 BYPASS		1	1
	22	•2BL06110		GUIDE VERTICAL FEED		1	1		62	•2FG06160		MOUNT BYPASS FEED		1	1
	23	•2BL06330		GUIDE B FEED		1	1	⊙	63	•2BL06190		GEAR Z25 FEED		1	1
⊙	24	•2BL06490	5MVX421DN003	LOCK COVER R		2	2	⊙	64	•2BL06160		GEAR Z35-15 FEED		1	1
	25	•2BL06460		SPRING LEFT COVER		2	2	⊙	65	•2BL06150		GEAR Z28 FEED		1	1
	26	•2BL06940		EARTH PUSH SWITCH		1	1		66	•2FG06150		MOUNT MID FEED DRIVE		1	1
	27	•2FG06010		FRAME VERTICAL FEED A		1	1	⊙	67	•36222250		GEAR 30 IDLE		1	1
	28	•2FG06030		MOUNT FEED DRIVE B		1	1		68	•2FG06081		HOUSING FEED A		1	1
	29	•2FG06050		JOINT FEED DRIVE		1	1	⊙	69	•67322230		BUSHING 8		2	2
	30	•2FG06060		SHAFT FEED JOINT		1	1	⊙	70	•2FG27180		CLUTCH REGISTRATION		1	1
	31	•2FG06070		SPRING FEED JOINT		1	1	⊙	71	•2BC06980		STOPPER 5		2	2
	32	•2FG06120		COLLAR FEED JOINT		1	1	⊙	72	•2BL27410		SWITCH CONVEYING		1	1
	33	•2FG06130		SPRING GUIDE FEED		1	1	⊙	73	•2BC06910		STOPPER 6		4	4
	34	J5016030		CASE, BU03P-TR-PC-H (JST)		1	1	⊙	74	•2AL06110		GEAR 25		1	1
	35	M2109330		WIRE SADDLE, YMC-10-0 (KITAGAWA)		1	1		75	•2FG06170		GROUND PLATE GUIDE A		1	1
	36	2BL06051		FRONT RAIL FEED		1	1		76	•2FG06090		GUIDE MIDDLE FEED		1	1
	37	2BL06061		REAR RAIL FEED		1	1		77	•2FG06100		SHAFT MIDDLE FEED		1	1
	38	2BL04520		SHAFT LEFT COVER M		1	1		78	•2FG06110		PULLEY MIDDLE FEED		8	8
	39	2BL16230		SPRING CONV OPEN		1	1		79	•2FG06200		FILM MIDDLE FEED		2	2
	40	2BL06950		DUMPER LEFT COVER		1	1	⊙	80	2BC06910		STOPPER 6		1	1

- Parts with "•" are component parts or sub-assemblies of the assembly appearing immediately above them.
- Parts with "⊙" indicates the spare parts.

- Parts with "••" are component parts or sub-assembly with "•" appearing immediately above them.

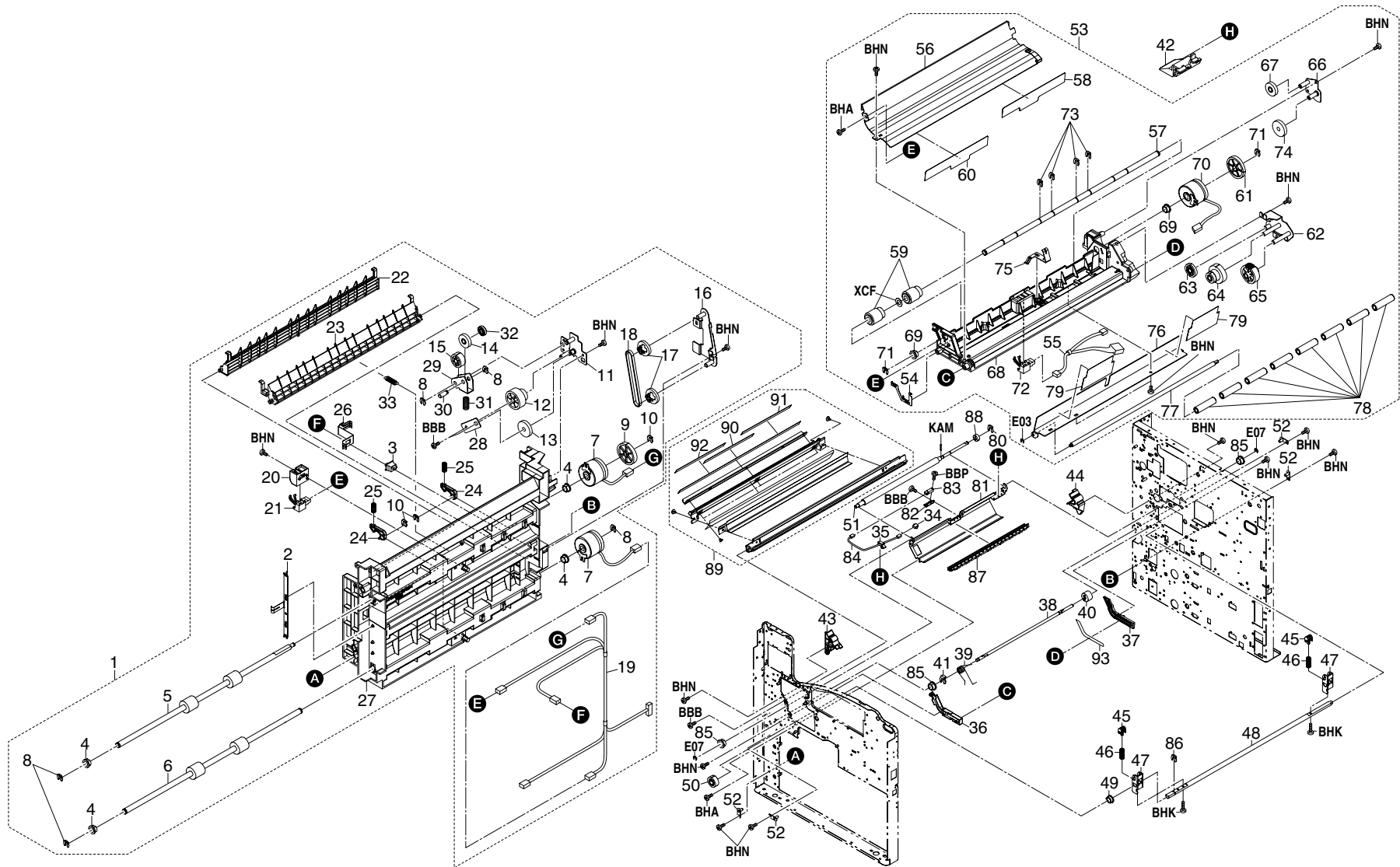


FIG. 5 Paper feed unit, 2

2FJ/2FH-4

SP	Ref.No.	Part.No.	Alternative.	Description	Applicable Model	Quantity	
						120V	230V
	81	2BL06260		FRONT GUIDE REGIST		1	1
	82	2BL06440		MOUNT REGIST SWITCH		1	1
⊙	83	2FG27110		SWITCH REGISTRATION		1	1
	84	2BL27170		WIRE REGISTRATION		1	1
⊙	85	67322230		BUSHING 8		3	3
⊙	86	2BC06980		STOPPER 5		1	1
⊙	87	2BL93450		PARTS,REGISTRATION		1	1
⊙	88	36722860		GEAR 18		1	1
⊙	89	2FG93110		PARTS, GUIDE TRANSFER ASSY		1	1
	90	•2FG05100		LABEL DRUM CAUTION A		1	
	91	•2FG05080		LABEL DRUM CAUTION E1			1
	92	•2FG05090		LABEL DRUM CAUTION E2			1
	93	2FG06220		FILM MIDDLE FEED RAIL R		1	1

- Parts with "•" are component parts or sub-assemblies of the assembly appearing immediately above them.
- Parts with "⊙" indicates the spare parts.

- Parts with "••" are component parts or sub-assembly with "•" appearing immediately above them.

FIG. 6 Paper feed unit, 3

2FJ/2FH-4

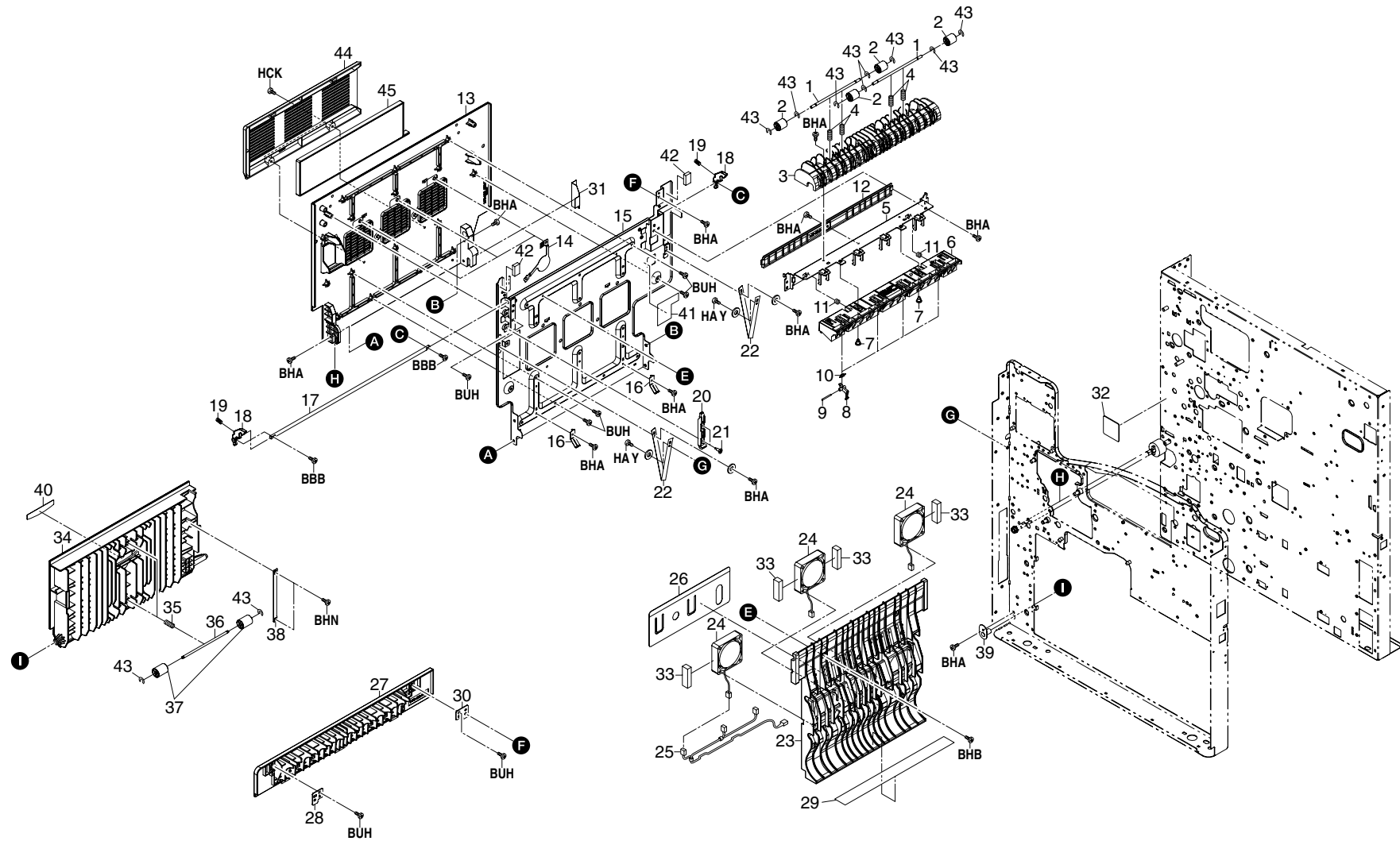


FIG. 6 Paper feed unit, 3

2FJ/2FH-4

SP	Ref.No.	Part.No.	Alternative.	Description	Applicable Model	Quantity		SP	Ref.No.	Part.No.	Alternative.	Description	Applicable Model	Quantity	
						120V	230V							120V	230V
⊙	1	2BL21361		SHAFT CHANGE PULLEY		2	2		41	2BL05110		LABEL HIGH TEMP		1	1
	2	2BL21330		PULLEY FEED SHIFT		4	4		42	2AC26310		SHIELD 10X8X20,GASKET		2	2
⊙	3	2BL21290		GUIDE EXIT L		1	1	⊙	43	2BL16290		CUT WASHER 3		12	12
	4	2BL21340		SPRING CHANGE PULLEY		4	4		44	2FG23020	302FG23020	MOUNT OZONE FILTER A		1	1
⊙	5	2FG20181		MOUNT REAR GUIDE		1	1	⊙	45	2FG23030	302FG23030	FILTER OZONE A		1	1
	6	2FG20170		REAR GUIDE FIXING		1	1								
⊙	7	34920170		FULCRUM PIN, FIXING		2	2								
	8	2BL20350		CLAW PRESS ROLLER		4	4								
⊙	9	2AR20510		SHAFT, PRESSURE ROLLER SEPARATION CLAW		4	4								
	10	2FG20370		SPRING PRESS ROLLER		4	4								
⊙	11	65009050		SPRING, DEVELOPING ROCK		2	2								
	12	2BL21410		GUIDE FEED SHIFT L		1	1								
⊙	13	2BL04511	302BL04511	LEFT COVER MIDDLE		1	1								
	14	2BL23110		GROUND PLATE LEFT FAN		3	3								
⊙	15	2BL04621	302BL04621	PLATE LEFT COVER M		1	1								
	16	2BL04700		GROUND PLATE LEFT B		2	2								
⊙	17	2BL04540		SHAFT L COVER LOCK M		1	1								
	18	2BL04550		LEVER L COVER LOCK M		2	2								
⊙	19	2BL04560		SPRING L COVER LOCK		2	2								
	20	2BL04600		LEVER COVER RELEASE		1	1								
⊙	21	73912281		PIN, ORIGINAL HOLDER		2	2								
	22	2BL04680		STRAP COVER		2	2								
⊙	23	2BL21320		GUIDE LEFT COVER M		1	1								
	24	2FG27080		FAN MOTOR 4		3	3								
⊙	25	2BL27300		WIRE CONVEYING FAN		1	1								
	26	2BL21460		FILM WIRE PROTECT		1	1								
⊙	27	2BL04650		COVER EXIT L		1	1								
	28	2BL04660		FRONT PLATE EXIT L		1	1								
⊙	29	2BL21490		GUIDE FILM DU		1	1								
	30	2BL04670		REAR PLATE EXIT L		1	1								
⊙	31	2BL21500		FILM WIRE PROTECT B		1	1								
	32	2BL05271		LABEL DRUM CAUTION		1	1								
⊙	33	2BL23170		SPONGE LEFT FAN		4	4								
	34	2BL06100		LEFT COVER FEED		1	1								
⊙	35	2BL06340		SPRING FEED		2	2								
	36	2BL06211		SHAFT FEED PULLEY		2	2								
⊙	37	2BL16080		PULLEY FEED		4	4								
	38	2BL06960		STRAP RELEASE		1	1								
⊙	39	2AR07540		RETAINING PIN, VERTICAL CONVEYING		1	1								
	40	2BL05250		LABEL LEFT COVER A		1	1								

- Parts with "*" are component parts or sub-assemblies of the assembly appearing immediately above them.
- Parts with "⊙" indicates the spare parts.

- Parts with "*" are component parts or sub-assembly with "*" appearing immediately above them.

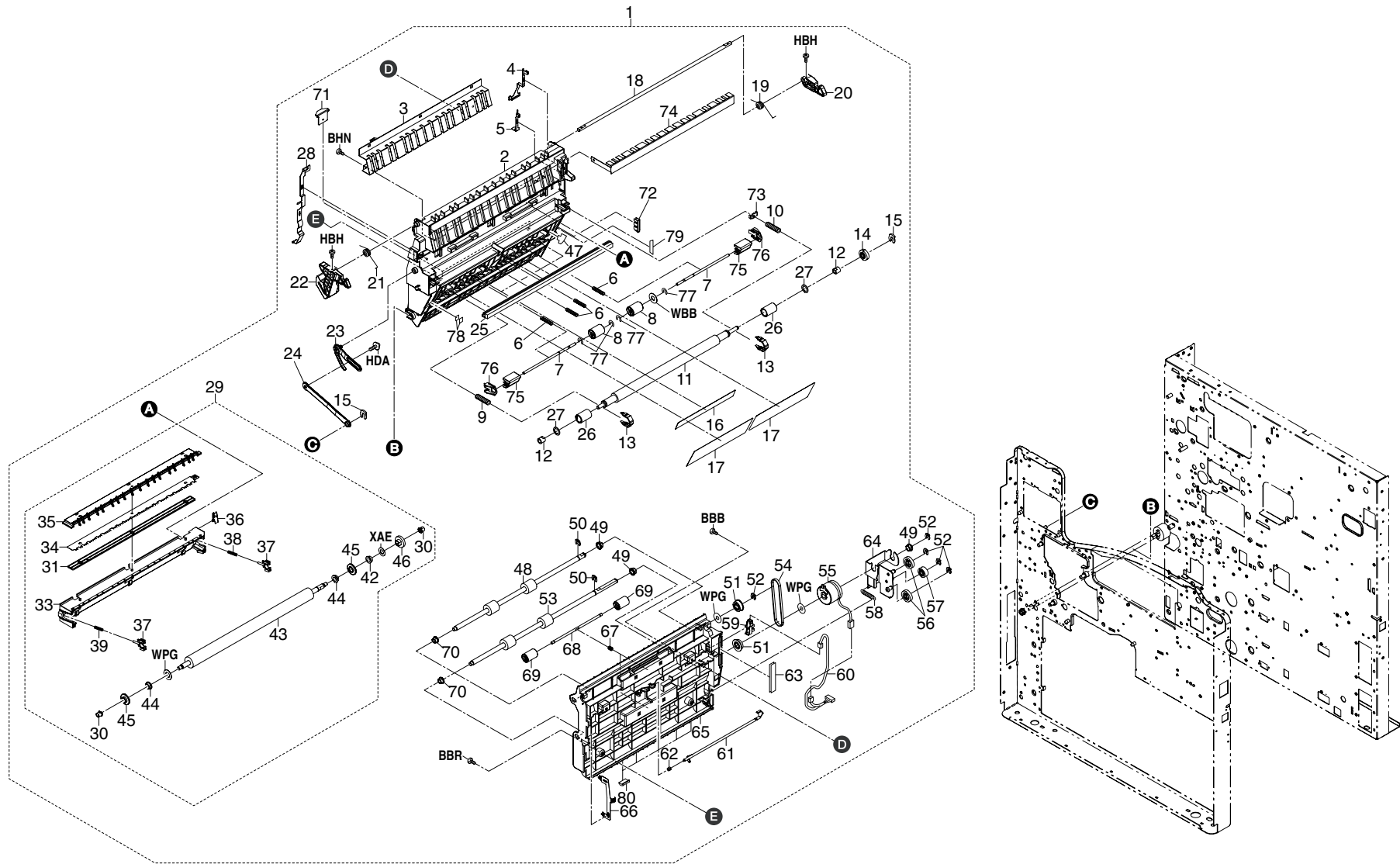


FIG. 7 Paper conveyers

2FJ/2FH-4

SP	Ref.No.	Part.No.	Alternative.	Description	Applicable Model	Quantity		SP	Ref.No.	Part.No.	Alternative.	Description	Applicable Model	Quantity	
						120V	230V							120V	230V
⊙	1	2FH93100		PARTS, FEED UNIT FE-702		1	1	⊙	44	•2BL17170		BUSHING 8		2	2
	2	•2FG16260		BASE CONVEYING A 1		1	1	⊙	45	•2BL17040		PULLEY TRANS ROLLER		2	2
	3	•2FG16200		PLATE PAPER GUIDE		1	1	⊙	46	•2BL17090		GEAR TRANS Z25H		1	1
	4	•2BL16150		PLATE TRANS B		1	1		47	•2FG16340		FILM FEED SHAFT R		1	1
	5	•2BL16170		PLATE SEPARATION B		1	1	⊙	48	•2BL07020		ROLLER DU FEED UP		1	1
	6	•2FG16320		SPRING FEED		4	4	⊙	49	•67322230		BUSHING 8		3	3
	7	•2FG16280		SHAFT FEED		2	2	⊙	50	•2BC06910		STOPPER 6		2	2
⊙	8	•2BL16080		PULLEY FEED		2	2	⊙	51	•2BL21230		PULLEY EXIT T30		2	2
⊙	9	•2FG16300		SPRING REGIST F		1	1	⊙	52	•2BC06980		STOPPER 5		5	5
⊙	10	•2FG16310		SPRING REGIST R		1	1	⊙	53	•2BL07030		ROLLER DU FEED LOW		1	1
⊙	11	•2FG16021		ROLLER REGIST		1	1	⊙	54	•2BL21240		BELT EXIT P2M212		1	1
⊙	12	•2BL16260		BUSHING REGIST		2	2	⊙	55	•2FG27160		CLUTCH FEED		1	1
⊙	13	•2BL16030		STOPPER BUSH		2	2	⊙	56	•2AL06110		GEAR 25		2	2
⊙	14	•2BL16060		GEAR REGIST Z18		1	1	⊙	57	•66506630		GEAR IDLE 20		1	1
⊙	15	•2A806250	5MVX1111DN003	RING STOPPER		2	2		58	•2BL07080		SPRING DU JOINT		1	1
⊙	16	•2BL16130		GUIDE REGIST F		2	2	⊙	59	•2C927210		SENSOR 248NL1		1	1
	17	•2BL16250		GUIDE FEED F		2	2		60	•2BL27200		WIRE DUPLEX		1	1
	18	•2BL16210		SHAFT CONVEYING		1	1	⊙	61	•2BL07090		ACTUATOR DU		1	1
	19	•2BL16240		SPRING CONVEYING B		1	1		62	•2BL07130		SPRING DU ACT.		1	1
⊙	20	•2BL16190		HOOK CONVEYING		1	1		63	•2BL07140		FILM WIRE DU		1	1
	21	•2BL16200		SPRING CONVEYING		1	1		64	•2BL07070		JOINT DU		1	1
⊙	22	•2BL16180		HANDLE CONVEYING		1	1		65	•2BL07010		FRAME DU		1	1
	23	•2BL16100		STRAP CONVEYING A		1	1		66	•2BL07110		PLATE EARTH DU		1	1
	24	•2BL16110		STRAP CONVEYING B		1	1		67	•2BL07060		SPRING DU PULLEY		2	2
	25	•2BL07950		UNDER CLEANER REGIST		1	1		68	•2BL07051		SHAFT DU PULLEY		2	2
	26	•2FG16030		PULLEY REGIST		2	2	⊙	69	•2BL07040		PULLEY DU		4	4
	27	•2BL07970		CUT WASHER 10		2	2	⊙	70	•73210450		BUSH, 6		2	2
	28	•2BL16160		PLATE TRANS UNIT GND		1	1		71	•2BL07120		PLATE NUT DU		2	2
⊙	29	•2FH93040		PARTS, TR-702,SP		1	1		72	•2FG16010		PLATE MID FEED UNIT		1	1
⊙	30	•2BL17030		COLLAR TRANS ROLLER		2	2		73	•2FG16250		SPACER REGIST		1	1
	31	•2FG17020		SPACER SEPARATION		1	1		74	•2FG16270		SHEET CONVEYING		1	1
	33	•2BL17010		HOUSING TRANSFER		1	1		75	•2FG16290		GUIDE FEED		2	2
⊙	34	•2FG17040		BRUSH SEPARATION		1	1		76	•2FG16330		HOLDER SHAFT A		2	2
	35	•2FG17010		HOLDER SEPARATION A		1	1	⊙	77	•2BL16290		CUT WASHER 3		4	4
	36	•2BL17050		PLATE TRANS UNIT		1	1		78	•2FG16350		FILM PLATE TRANS		2	2
⊙	37	•2BL17060		BUSH TRANS ROLLER		2	2		79	•2FG16360		FILM PLATE MID		1	1
⊙	38	•2FG17160		SPRING TRANS R		1	1		80	•2BL07150		GUIDE RIB DU		4	4
⊙	39	•2BL17070		SPRING TRANS F		1	1								
⊙	42	•75718040		BUSHING,CLEANING BLADE SHAFT		1	1								
⊙	43	•2BL17021		ROLLER TRANSFER		1	1								

- Parts with "•" are component parts or sub-assemblies of the assembly appearing immediately above them.
- Parts with "⊙" indicates the spare parts.

- Parts with "••" are component parts or sub-assembly with "•" appearing immediately above them.

FIG. 8 Paper exit

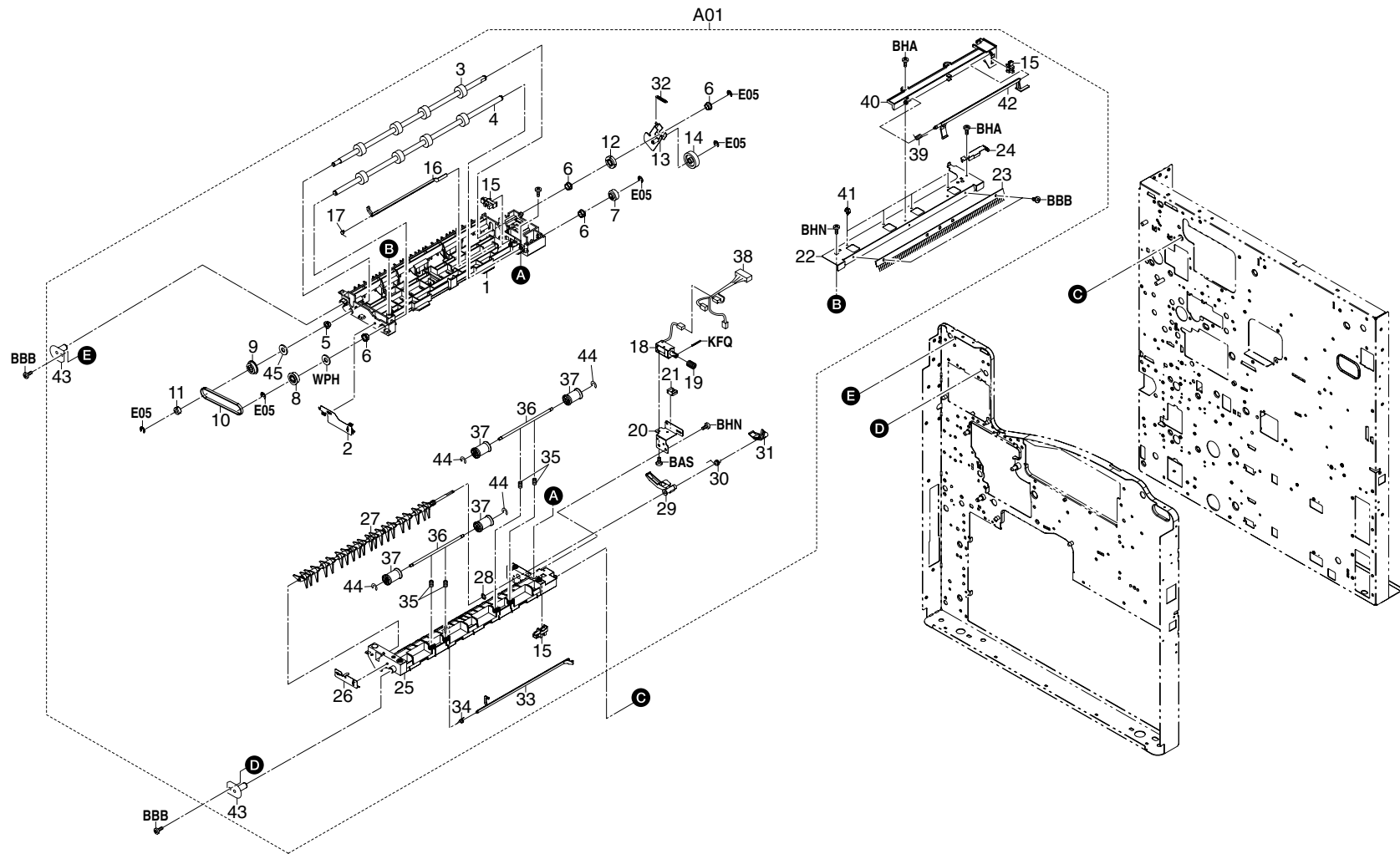


FIG. 8 Paper exit

2FJ/2FH-4

SP	Ref.No.	Part.No.	Alternative.	Description	Applicable Model	Quantity		SP	Ref.No.	Part.No.	Alternative.	Description	Applicable Model	Quantity	
						120V	230V							120V	230V
⊙	A01	2BL93102		EXIT ASSY	Excl. Taiwan	1	1		38	•2BL27160		WIRE EJECT (P)		1	1
⊙	A01	2BL93492		PARTS EXIT UNIT J	Taiwan only	1			39	•2BL21480		SPRING EXIT FULL		1	1
	1	•2BL21040		FRAME EXIT UP		1	1		40	•2BL21150		BKT EXIT FULL		1	1
	2	•2BL21170		PLATE EARTH EXIT F		1	1		41	•M2105740		MINIATURE CLAMP, UAMS-05S-2		4	4
⊙	3	•2BL21030		ROLLER FEED SHIFT		1	1		42	•2BL21140		ACTUATOR EXIT FULL		1	1
⊙	4	•2BL21020		ROLLER EXIT	Excl. Taiwan	1	1		43	•2BL21420		PIN EXIT		2	2
⊙	4	•2BL21050		ROLLER EXIT J	Taiwan only	1		⊙	44	•2BL16290		CUT WASHER 3		4	4
⊙	5	•73210450		BUSH, 6		1	1	⊙	45	•C2891120		POLYESTER SLIDER WASHER 6.2X12X0.25T		1	1
⊙	6	•67322230		BUSHING 8		4	4								
⊙	7	•2BL21430		GEAR EXIT Z20		1	1								
⊙	8	•2BL21230		PULLEY EXIT T30		1	1								
⊙	9	•2BL21211		PULLEY ONEWAY T30		1	1								
⊙	10	•2BL21240		BELT EXIT P2M212		1	1								
	11	•2FG22120	302FG22120	COLLAR BELT DRIVE		1	1								
⊙	12	•2BL21220		GEAR EXIT Z19		1	1								
	13	•2BL21200		JOINT EXIT		1	1								
⊙	14	•2BL21390		GEAR EXIT JOINT Z26S		1	1								
⊙	15	•35327400		SWITCH FEED		3	3								
⊙	16	•2BL21130		ACTUATOR EXIT L		1	1								
	17	•2BL21260		SPRING ACTUATOR L		1	1								
⊙	18	•3AZ21890		SOLENOID, FEED SHIFT		1	1								
⊙	19	•2BL21440		SPRING EXIT CHANGE		1	1								
	20	•2BL21190		BKT SOLENOID		1	1								
	21	•M2104350		EDGING, EDS-0607M (KITAGAWA)		1	1								
	22	•2BL21160		BKT DISCHARGER		1	1								
⊙	23	•34821100		STATIC ELIMINATOR, EJECT		1	1								
	24	•2BL21180		PLATE EARTH EXIT R		1	1								
	25	•2BL21010		FRAME EXIT		1	1								
	26	•2BL21470		PLATE EARTH CHANGE		1	1								
⊙	27	•2BL21080		GUIDE EXIT CHANGE		1	1								
⊙	28	•2BL21510		CUT WASHER 6		1	1								
	29	•2BL21370		LEVER GUIDE CHANGE B		1	1								
	30	•2BL21270		SPRING FEED SHIFT		1	1								
	31	•2BL21100		LEVER GUIDE CHANGE		1	1								
	32	•2BL21400		SPRING EXIT JOINT		1	1								
⊙	33	•2BL21120		ACTUATOR EXIT R		1	1								
	34	•2BL21250		SPRING ACTUATOR R		1	1								
	35	•2BL21070		SPRING EXIT PULLEY		4	4								
	36	•2BL21060		SHAFT EXIT PULLEY		2	2								
	37	•2BL21520		PULLEY EXIT C		4	4								

- Parts with "•" are component parts or sub-assemblies of the assembly appearing immediately above them.
- Parts with "⊙" indicates the spare parts.

- Parts with "••" are component parts or sub-assembly with "•" appearing immediately above them.

FIG. 9 Bypass unit

2FJ/2FH-4

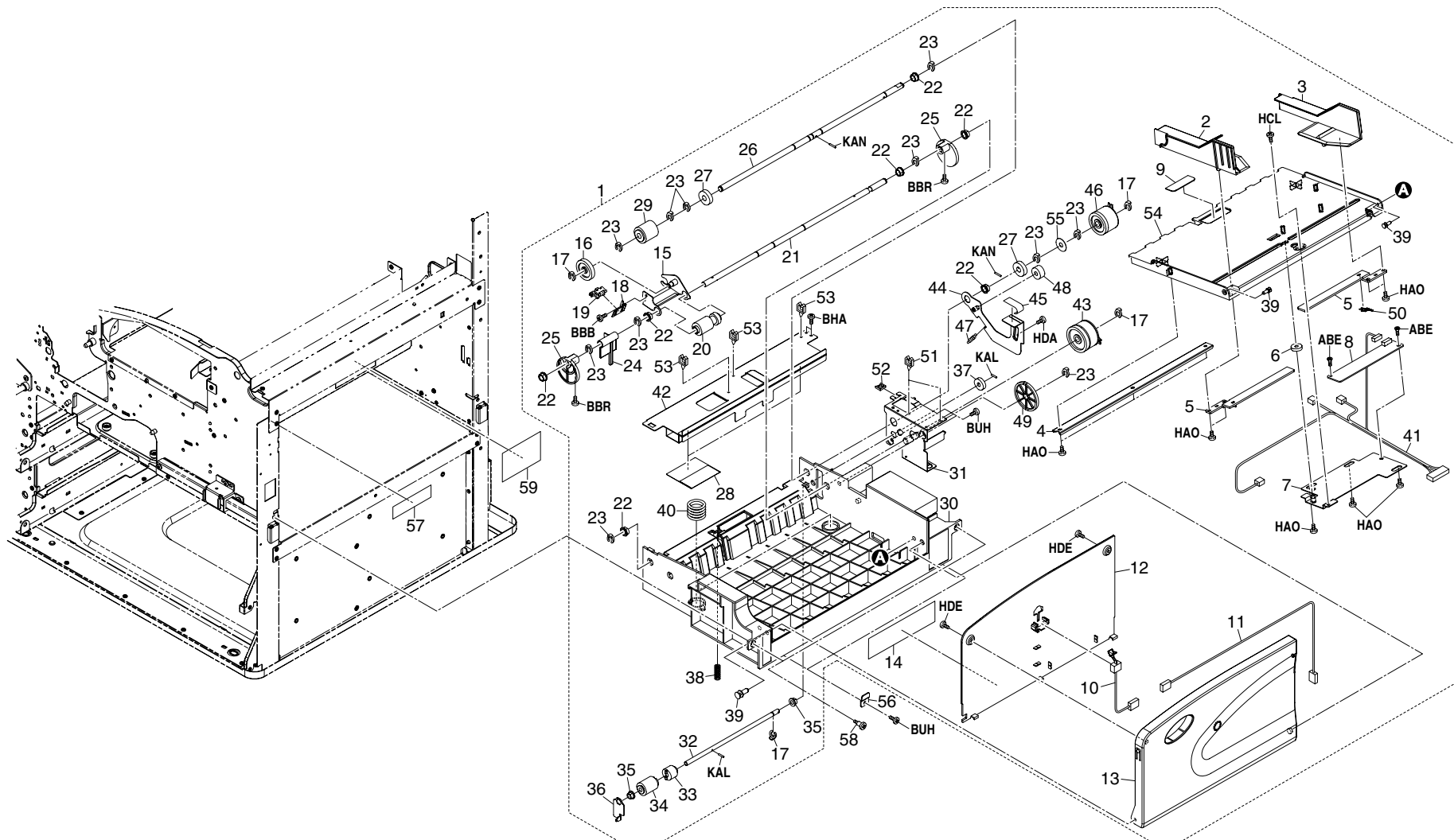


FIG. 9 Bypass unit

2FJ/2FH-4

SP	Ref.No.	Part.No.	Alternative.	Description	Applicable Model	Quantity		SP	Ref.No.	Part.No.	Alternative.	Description	Applicable Model	Quantity	
						120V	230V							120V	230V
⊙	1	2BL93432		BYPASS UNIT(C),SP			1	⊙	39	•66007310		PIN, CASSETTE WORK PLATE		3	3
⊙	1	2BL93442		BYPASS UNIT(I),SP		1	1		40	•2BL07860		SPRING BYPASS		2	2
	2	•2BL06660		FRONT CURSOR BYPASS		1	1		41	•2BL27150		WIRE BYPASS UNIT		1	1
	3	•2BL06670		REAR CURSOR BYPASS		1	1		42	•2BL06530		COVER BYPASSUNIT		1	1
	4	•2BL06650		STAY LIFTPLATE		1	1	⊙	43	•2FG27170		CLUTCH, FEED B		1	1
⊙	5	•33907100		RACK, CASSETTE		2	2		44	•2BL06850		JOINT RETARD		1	1
⊙	6	•65914120		GEAR 18, IDLE DEVELOPING		1	1		45	•2BL05040		LABEL RETARD		1	1
	7	•3A206461		MOUNT, BYPASS PCB		1	1	⊙	46	•2FG27160		CLUTCH FEED		1	1
⊙	8	•2FG01020		SIZE DETECTION ASS'Y		1	1		47	•2BL06870		SPRING JOINTRETARD		1	1
	9	•34806490		FRICTION PLATE, BYPASS LEADING FEED		1	1	⊙	48	•33906160		GEAR 16, PAPER FEED		1	1
⊙	10	•2CJ06260		SWITCH,BYPASS SIZE DETECTION		1	1	⊙	49	•2BL06720		GEAR 55/15		1	1
	11	•2BL27210		WIRE BYPASS TRAY		1	1		50	•33907110		TERMINAL, PAPER SIZE PCB		1	1
⊙	12	•2BL06610		TABLE BYPASS		1	1		51	•M2105740		MINIATURE CLAMP, UAMS-05S-2		2	2
⊙	13	•2BL06600		COVER BYPASSSTRAY		1	1		52	•M2104210		EDGING, EDS-2		1	1
⊙	14	•2BL05010		LABEL BYPASSSIZE (C)			1		53	•M2105210		MINI CLAMP,UAMS-02WL-0(KITAGAWA)		3	3
⊙	14	•2BL05060		LABEL BYPASSSIZE (I)		1			54	•2BL06642		LIFTPLATE BYPASS		1	1
	15	•3A206130		JOINT, BYPASS PICKUP		1	1		55	•2BL06990		STOPPER GEAR 8-25		1	1
⊙	16	•72321350		GEAR 30, FD EJECT IDLE		1	1		56	2BL06890		PLATE BYPASS HOLD		2	2
⊙	17	•2BC06980		STOPPER 5		4	4		57	3A205010		LABEL, CAUTION GEAR		1	1
	18	•3A206210		MOUNT, BYPASS PE SWITCH		1	1		58	2BL04410		PIN COVER		2	2
⊙	19	•2C927210		SENSOR 248NL1		1	1		59	2BL05100		LABEL BYPASS JAM R		1	1
⊙	20	•2BJ06010		PULLEY FEED A		1	1								
	21	•2BL06760		SHAFT BYPASSCAM		1	1								
⊙	22	•67322230		BUSHING 8		7	7								
⊙	23	•2BC06910		STOPPER 6		10	10								
⊙	24	•3A206100		ARM, BYPASS PE		1	1								
⊙	25	•2BL06680		CAM BYPASS		2	2								
	26	•2BL06770		SHAFT BYPASS		1	1								
⊙	27	•45729416		GEAR, TONER ROLLER		2	2								
	28	•2BL06880		FILM BYPASS		2	2								
⊙	29	•61706770		UPPER PULLEY, BYPASS		1	1								
	30	•2BL06511		BASE BYPASSUNIT (1)		1	1								
	31	•2BL06690		MOUNT BYPASSDRIVE		1	1								
	32	•2BL06750		SHAFT RETARD		1	1								
⊙	33	•33906430		TORQUE LIMITER,BYPASS		1	1								
⊙	34	•2AR07230		PULLEY, SEPARATION		1	1								
⊙	35	•73210450		BUSH, 6		2	2								
	36	•3A206170		HOLDER, RETARD		1	1								
⊙	37	•66006810		GEAR, 16 BYPASS PULLEY		1	1								
	38	•2BL06860		SPRING RETARD		1	1								

- Parts with "•" are component parts or sub-assemblies of the assembly appearing immediately above them.
- Parts with "⊙" indicates the spare parts.

- Parts with "••" are component parts or sub-assembly with "•" appearing immediately above them.

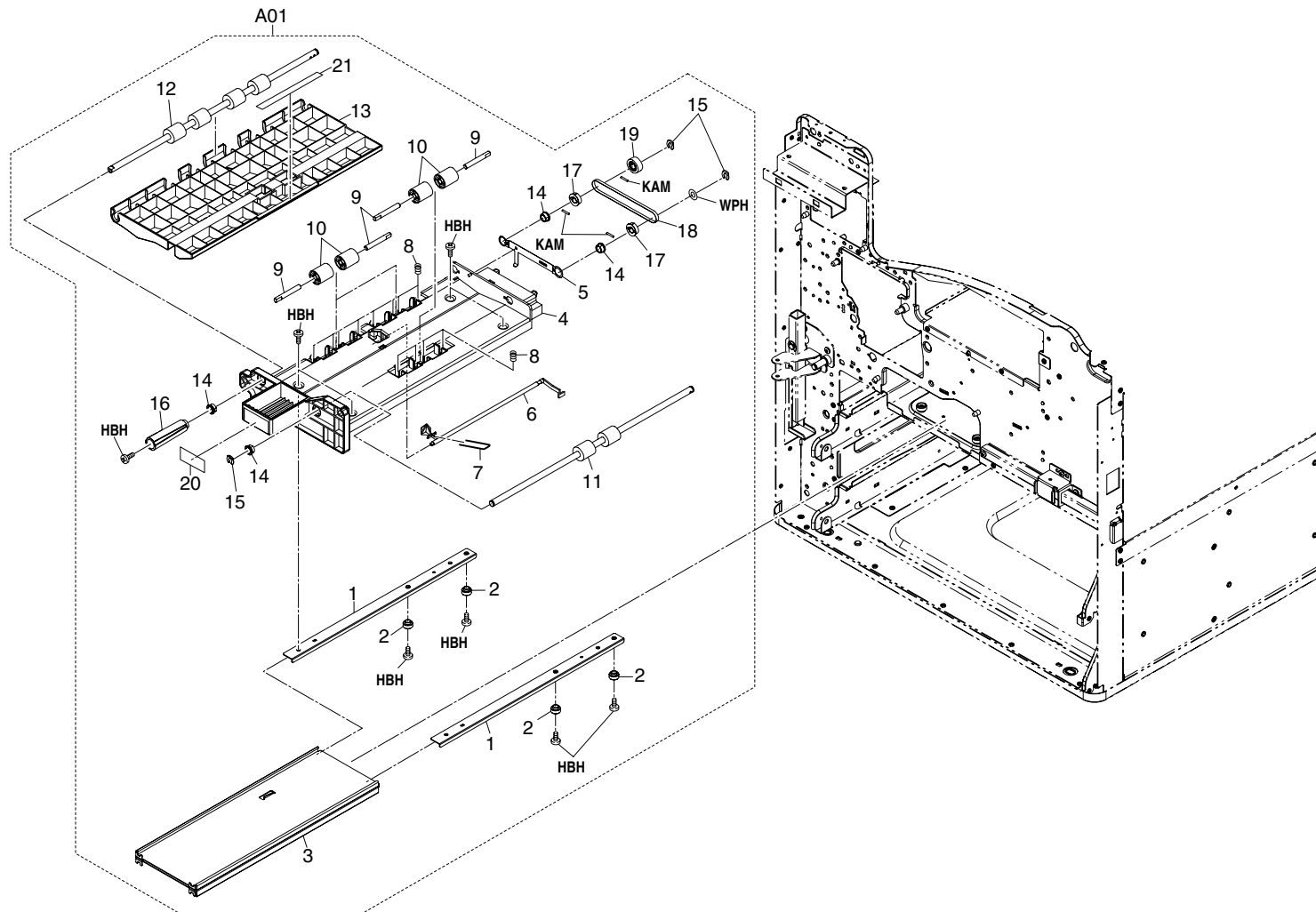


FIG. 10 Bypass feed unit

2FJ/2FH-3

SP	Ref.No.	Part.No.	Alternative.	Description	Applicable Model	Quantity	
						120V	230V
⊙	A01	2BL93390		BYPASS FEED UNIT		1	1
	1	•2BL06570		MOUNT RAIL		2	2
	2	•2BL06590		PULLEY RAIL		4	4
	3	•2BL06580		RAIL BYPASS		1	1
	4	•2BL06500		BASE BYPASSFEED (1)		1	1
	5	•2BL06790		GROUNDPLATE BYPASS		1	1
⊙	6	•2BL06730		ACTUATOR BYPASSFEED		1	1
⊙	7	•2BL06800		SPRING BYPASS		1	1
	8	•2BL06780		SPRING BYPASSFEED		12	12
	9	•2BL06740		SHAFT BYPASSFEED		6	6
⊙	10	•33906660		RIGHT PULLEY, FEED		6	6
⊙	11	•2BL06560		ROLLER4 BYPASSFEED		1	1
⊙	12	•2BL06540		ROLLER2 BYPASSFEED		1	1
	13	•2BL06520		UPPERGUIDE BYPASS		1	1
⊙	14	•67322230		BUSHING 8		4	4
⊙	15	•2BC06910		STOPPER 6		3	3
	16	•2BL06830		DIAL BYPASSFEED		1	1
⊙	17	•2BL06820		PULLEY25 BYPASSFEED		2	2
⊙	18	•2BL06810		BELT BYPASSFEED		1	1
⊙	19	•36722860		GEAR 18		1	1
	20	•2BL05020		FRONT LABEL BYPASS		1	1
	21	•2BL05030		UPPER LABEL BYPASS		1	1

- Parts with "•" are component parts or sub-assemblies of the assembly appearing immediately above them.
- Parts with "⊙" indicates the spare parts.

- Parts with "••" are component parts or sub-assembly with "•" appearing immediately above them.

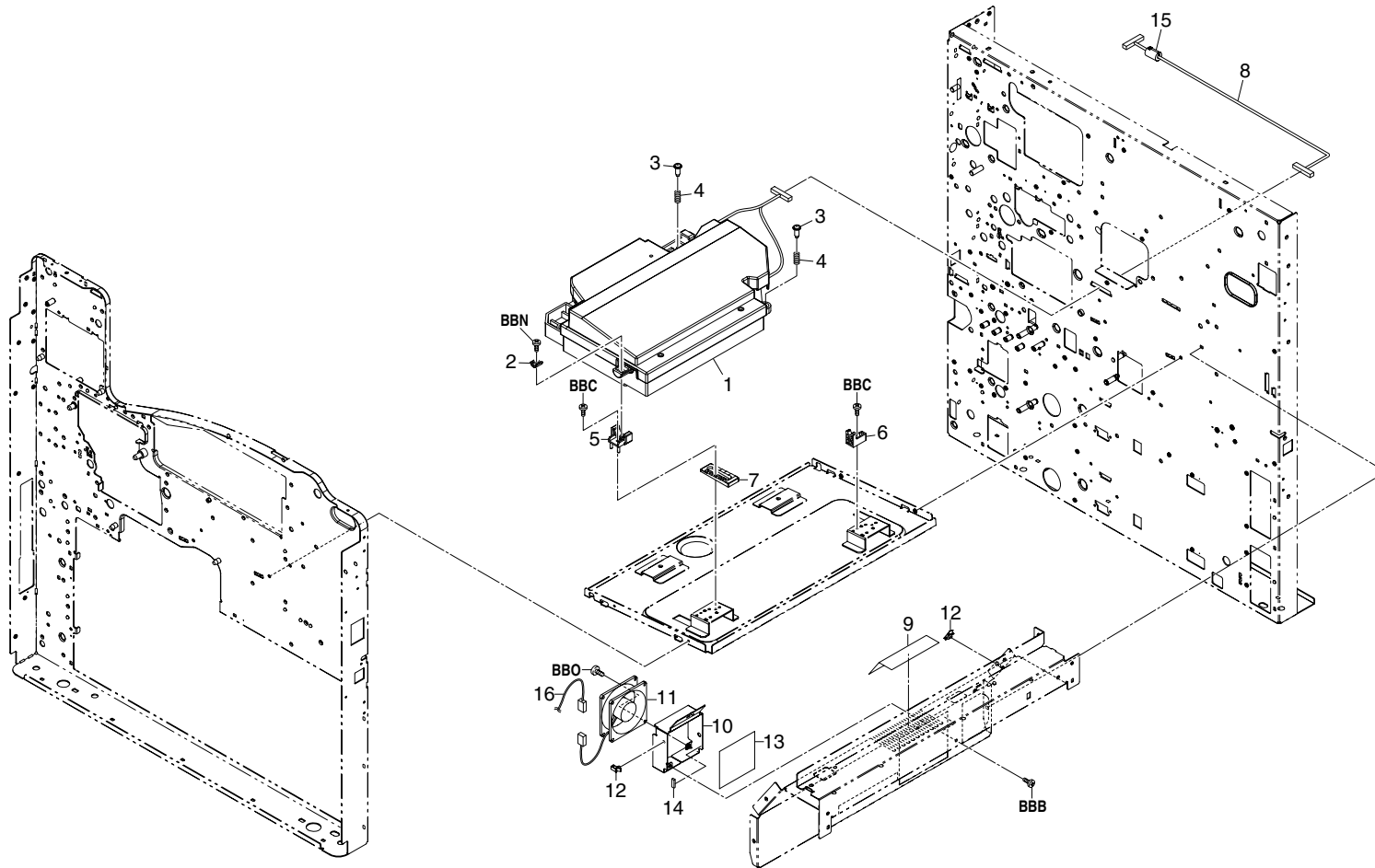


FIG. 11 LSU

2FJ/2FH-6.0

SP	Ref.No.	Part.No.	Alternative.	Description	Applicable Model	Quantity	
						120V	230V
◎	1	2BL93141		LK-700		1	1
	2	2BL13120		FRONT MOUNT HOUSING		1	1
	3	76610320		PIN TENSION PULLEY		2	2
	4	2BL13290		SPRING FIX LSU		2	2
	5	2BL13070		FRONT ADJUSTING LSU		1	1
	6	2BL13060		REAR ADJUSTING LSU		1	1
	7	2BL13250		ADJUSTING PLT LSU		1	1
	8	2BL27060		WIRE LSU		1	1
	9	2BL23090		FILTER DUST SHIELD		1	1
	10	2BL02230		MOUNT FAN		1	1
◎	11	2BL27700		FAN COOLING (60-25)		1	1
	12	M2109330		WIRE SADDLE, YMC-10-0 (KITAGAWA)		2	2
	13	2BL23160		FILTER DUST SHIELD B		1	1
	14	2BL02240		SPONGE FAN		1	1
	15	2FG27640		CORE ATFC-16-8-16		1	1
	16	2BL27330		WIRE DLP FAN		1	1

- Parts with "•" are component parts or sub-assemblies of the assembly appearing immediately above them.
- Parts with "◎" indicates the spare parts.

- Parts with "••" are component parts or sub-assembly with "•" appearing immediately above them.

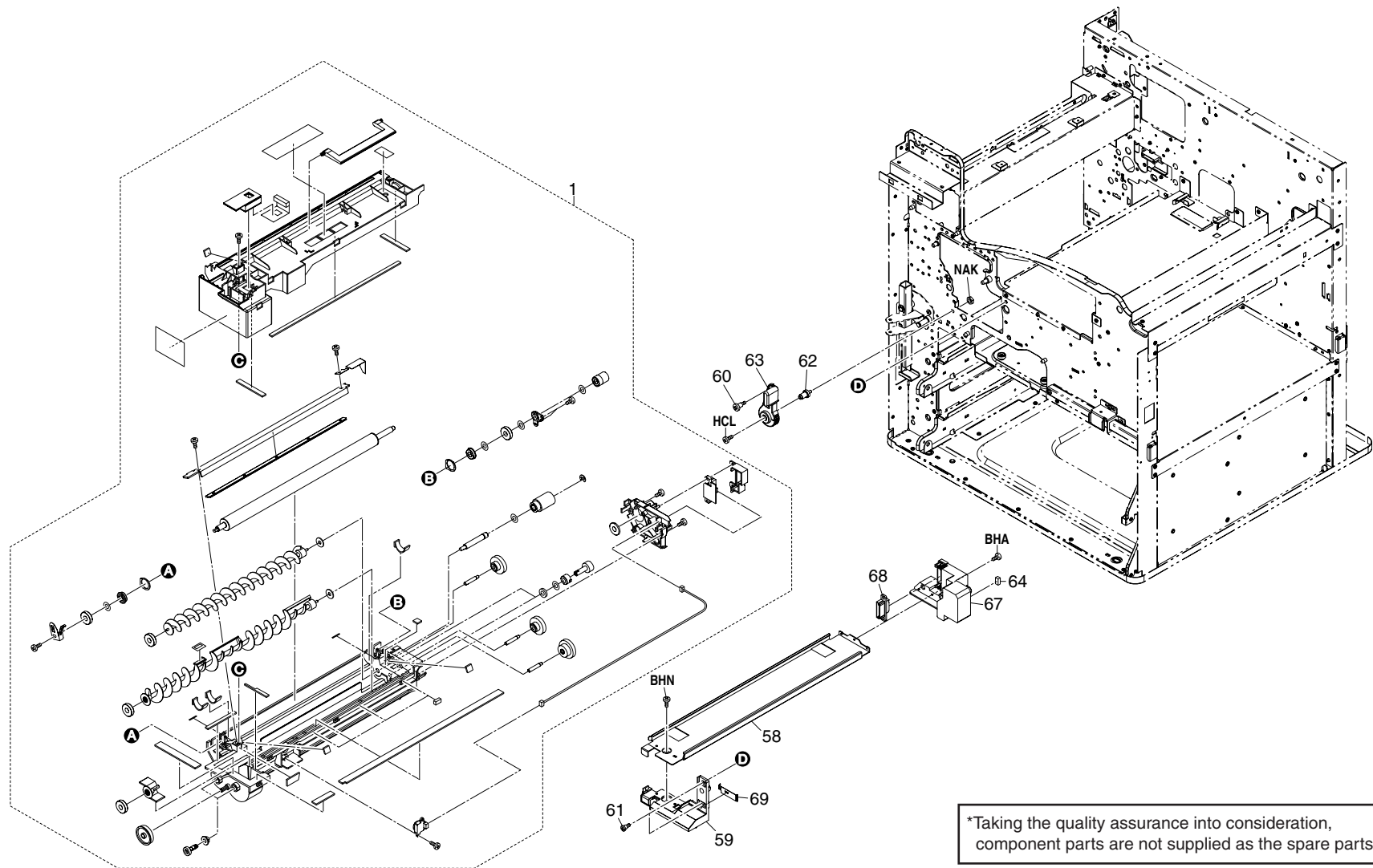


FIG. 12 Developer unit

2FJ/2FH-4

SP	Ref.No.	Part.No.	Alternative.	Description	Applicable Model	Quantity	
						120V	230V
◎	1	2BL93010	5PLPXHFAPKX	DV-700		1	1
	58	2BL14200		RAIL DLP		1	1
	59	2BL14180		FRONT ARM RAIL		1	1
	60	36006140		PIN,JAM REMOVED DIAL		1	1
	61	2BL14660	5MMT243SZ004	STUD SCREW S		2	2
	62	2BL14220		PIN LEVER DLP		1	1
	63	2BL14210		LEVER DLP		1	1
	64	2BL14480		SEAL WIRE		1	1
	67	2BL14190		REAR ARM RAIL		1	1
	68	J7340100		RECEPTACLE, 9715S-10A (IRS)		1	1
	69	2BL14350		GROUND PLATE RAIL		1	1

- Parts with "•" are component parts or sub-assemblies of the assembly appearing immediately above them.
- Parts with "◎" indicates the spare parts.

- Parts with "••" are component parts or sub-assembly with "•" appearing immediately above them.

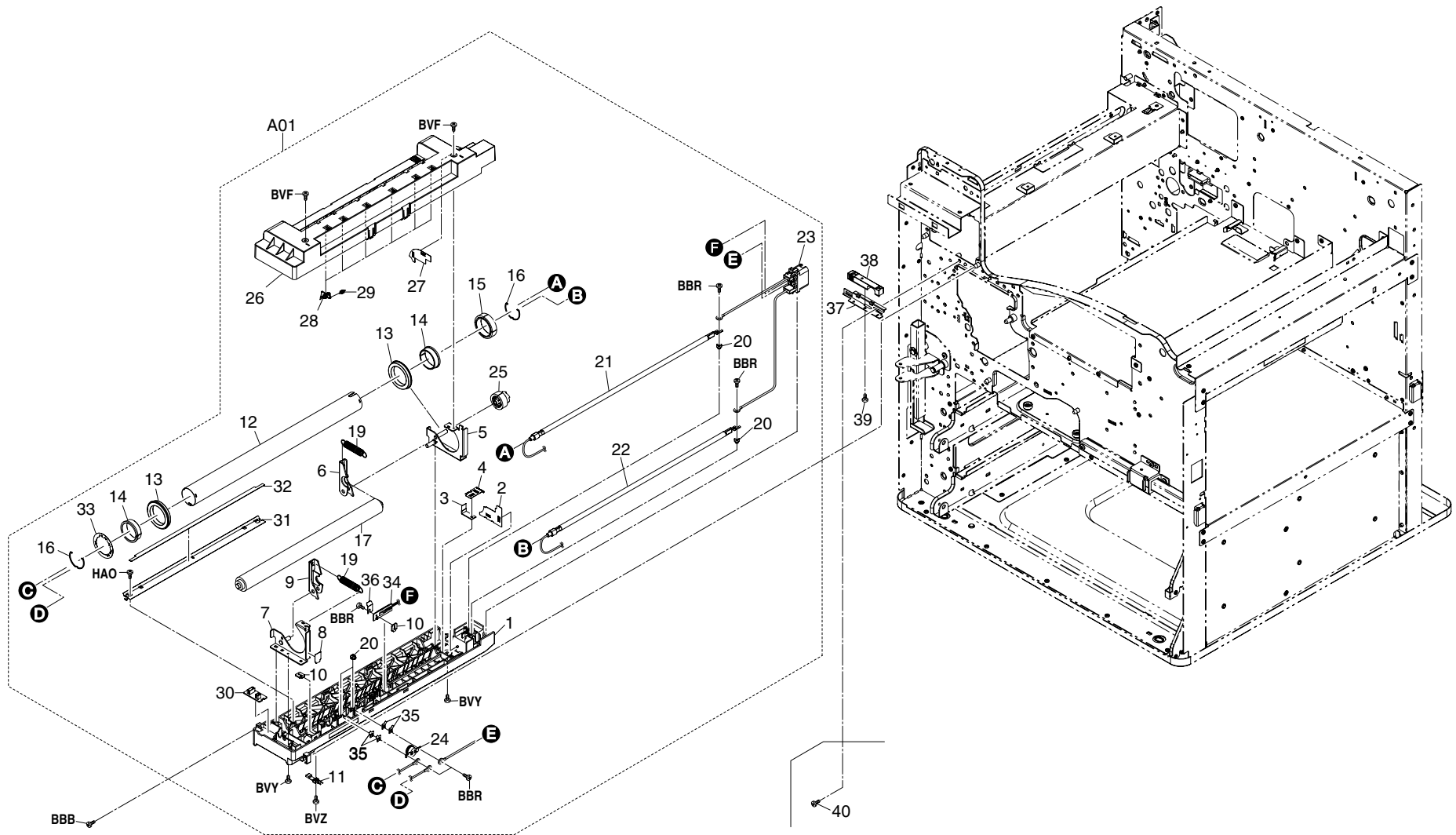


FIG. 13 Fuser unit

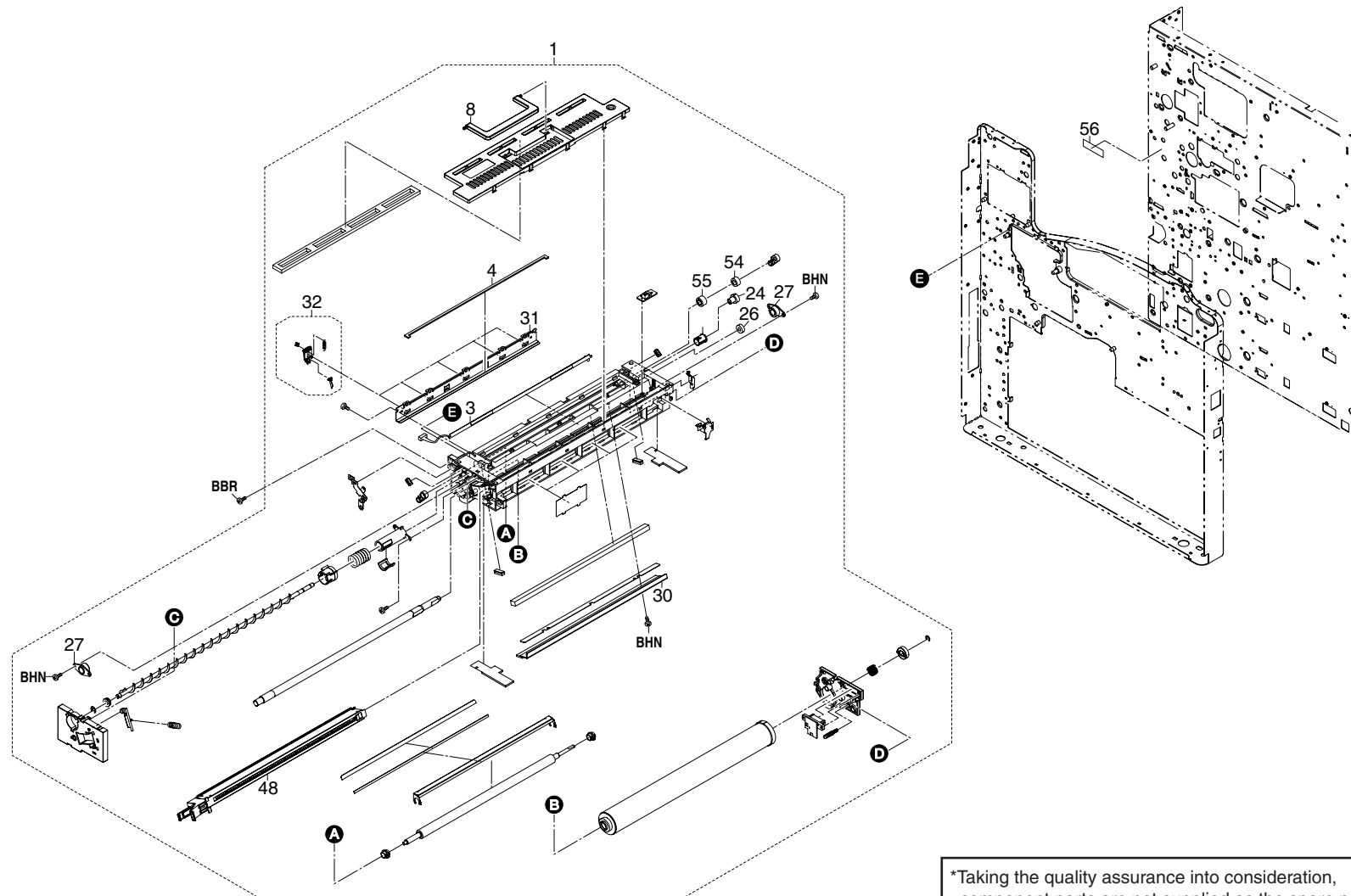
2FJ/2FH-4

SP	Ref.No.	Part.No.	Alternative.	Description	Applicable Model	Quantity		SP	Ref.No.	Part.No.	Alternative.	Description	Applicable Model	Quantity			
						120V	230V							120V	230V		
⊙	A01	2FH93031	302FH93050	PARTS, FK-702 (E), SP	Excl. Taiwan Taiwan only	1	1	⊙	32	•2BL20330		STATIC ELIMINATOR PRESS		1	1		
⊙	A01	2FH93021		PARTS, FK-702 (U), SP			1	1	⊙	33	•2FG20280		GROUND PLATE FIXING		1	1	
⊙	A01	2FH93050		PARTS, FK-702 (TW), SP			1	1	⊙	34	•2FG20340		THERMISTOR FIXING UC		1	1	
	1	•2FG20022		LOWER FRAME FIXING A			1	1		35	•2FG20380		SPACER THERMOSTAT		*4	*4	
	2	•2BL20310		LOWER COVER FRAME			1	1		36	•2FG20390		SPACER THERMISTOR UC		1	1	
	3	•34820310		STATIC ELIMINATOR, HEAT ROLLER			1	1		⊙	37	2FG02020		PLATE FIXING ADJUST		1	1
	4	•2BL20230		PLATE SPRING FIXING			1	1		⊙	38	2FG02030		SPACER FIXING ADJUST		1	1
	5	•2FG20040		REAR FRAME FIXING			1	1		⊙	39	B1093080		CROSS RECESSED HEAD TAPPING P SCREW M3X08		1	1
	6	•2FG20300		REAR PRESSING PLATE			1	1		⊙	40	B4303080		TRIPLE SCREW M3X8(BLACK)(SUPPLIED PARTS)		1	1
	7	•2FG20030		FRONT FRAME FIXING			1	1									
	8	•2BL20290		COVER FIXING WIRE		1	1										
	9	•2FG20290		FRONT PRESSING PLATE		1	1										
	10	•2BL20210		MOUNT THERMISTOR		1	1										
⊙	11	•2FG20210		THERMISTOR FIXING		1	1										
⊙	12	•2FG20050		ROLLER HEAT		1	1										
⊙	13	•2FG20190		BUSHING, HEAT ROLLER		2	2										
⊙	14	•2FG20230		BEARING, HEAT ROLLER		2	2										
⊙	15	•2FG20070		GEAR 55 HEAT ROLLER		1	1										
	16	•2FG20200		STOPPER HEAT ROLLER		2	2										
⊙	17	•2FG93150		PARTS, PRESS ROLLER ASSY		1	1										
	19	•2FG20240		SPRING PRESSURE	FS-9120DN	2	2										
	20	•2FG20360		NUT FUSER		4	4										
⊙	21	•2FG20120		HEATER M120 FIXING	Excl. Taiwan	1											
⊙	21	•2FG20140		HEATER M230 FIXING			1										
⊙	21	•2FG20320		HEATER M110 FIXING	Taiwan only	1											
⊙	22	•2FG20130		HEATER S120 FIXING	FS-9120DN, Excl. Taiwan	1											
⊙	22	•2FG20150		HEATER S230 FIXING	FS-9120DN		1										
⊙	22	•2FG20330		HEATER S110 FIXING	FS-9120DN, Taiwan only	1											
⊙	22	•2BL20140		HEATER S120 FIXING	FS-9520DN, Excl. Taiwan	1											
⊙	22	•2BL20160		HEATER S230 FIXING	FS-9520DN		1										
⊙	22	•2BL20120		HEATER S110 FIXING	FS-9520DN, Taiwan only	1											
	23	•2BL27130	WIRE FIXING UNIT		1	1											
⊙	24	•2FG20220	THERMOSTAT FIXING		1	1											
⊙	25	•2BL20260	GEAR FIXING Z33		1	1											
⊙	26	•2FG20010	UPPER FRAME FIXING A		1	1											
	27	•2BL20300	UPPER COVER FRAME		1	1											
⊙	28	•2BL20080	CLAW HEAT ROLLER		6	6											
	29	•2FG20350	SPRING CLAW		6	6											
	30	•2FH01080	PCB FIXING ASSY		1	1											
	31	•2BL20320	HOLDER PRESS SE		1	1											

*It depends on machine, the quantity may change for the adjustment.

- Parts with "•" are component parts or sub-assemblies of the assembly appearing immediately above them.
- Parts with "⊙" indicates the spare parts.

- Parts with "••" are component parts or sub-assembly with "•" appearing immediately above them.



*Taking the quality assurance into consideration, component parts are not supplied as the spare parts.

FIG. 14 Cleaning system

2FJ/2FH-4

SP	Ref.No.	Part.No.	Alternative.	Description	Applicable Model	Quantity	
						120V	230V
⊙	1	2BK93031		PARTS,DRUM UNIT KME36,SP	FS-9120DN	1	1
⊙	1	2BL93021		PARTS,DRUM UNIT KME50,SP	FS-9520DN	1	1
⊙	3	•2BL93420		PARTS, LAMP CLEANING ASSY		1	1
⊙	4	•2BL18560		SPONGE LOWER SEAL		1	1
⊙	8	•2BL18320		HANDLE DRUM		1	1
⊙	24	•2BL18160		GEAR SPIRAL 16		1	1
⊙	26	•2BL18170		GEAR IDLE 15		1	1
⊙	27	•2BL18630		BUSHING DRUM A		2	2
⊙	30	•2BL18300		BLADE CLEANING		1	1
⊙	31	•2BL18070		LOWER SEAL CLEANING		1	1
⊙	32	•2BL93311		PARTS, CLAW SEPARATION		5	5
⊙	48	•2BL93091		PARTS MAIN -C,MC700		1	1
	54	•2BL18870		GEAR CL ROLLER 15		1	1
	55	•2BL18880		GEAR CL ROLLER 16		1	1
	56	2BL05080		LABEL DRUM		1	1

- Parts with "•" are component parts or sub-assemblies of the assembly appearing immediately above them.
- Parts with "⊙" indicates the spare parts.

- Parts with "••" are component parts or sub-assembly with "•" appearing immediately above them.

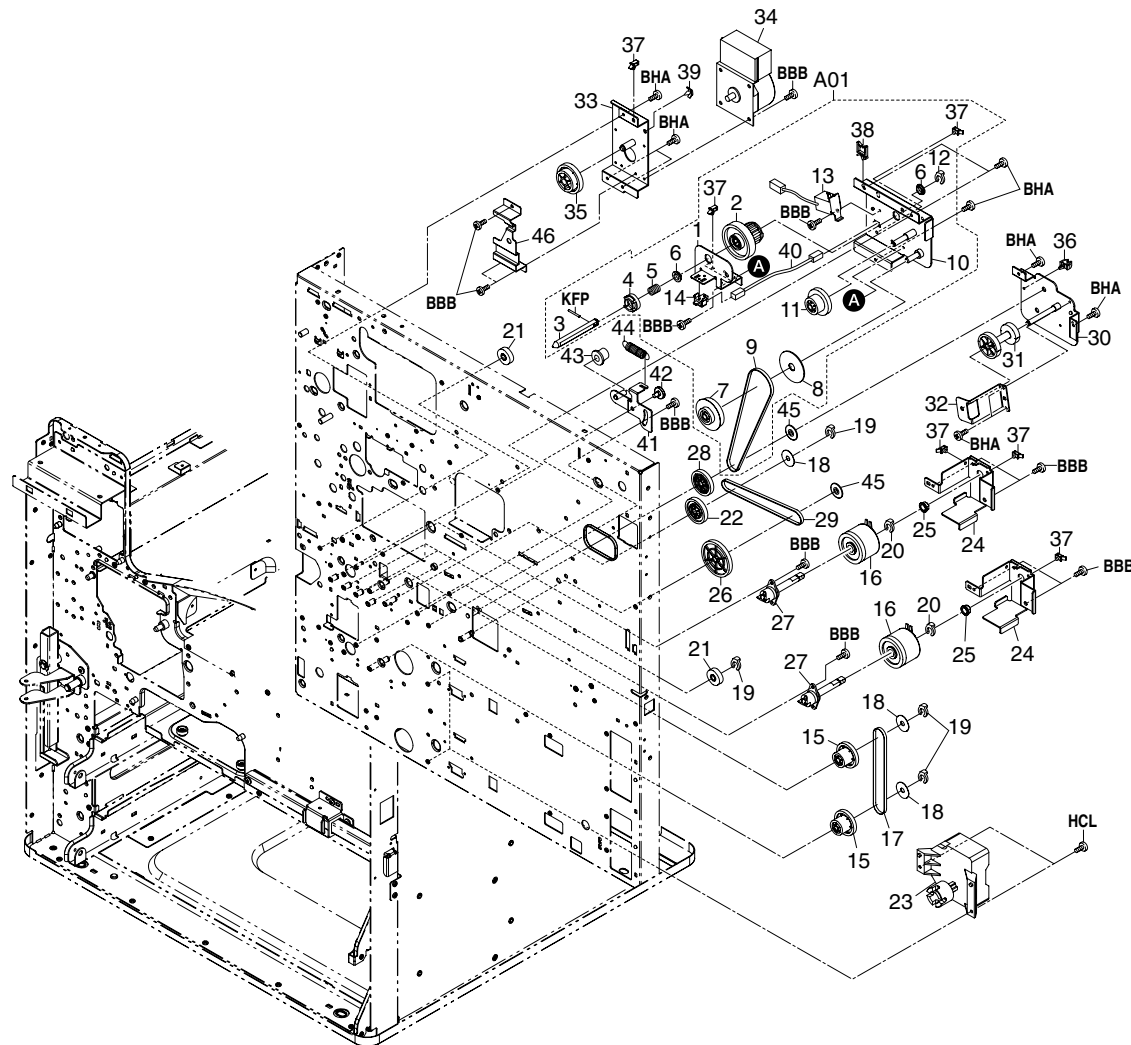


FIG. 15 Drive unit, 1

2FJ/2FH-4

SP	Ref.No.	Part.No.	Alternative.	Description	Applicable Model	Quantity		SP	Ref.No.	Part.No.	Alternative.	Description	Applicable Model	Quantity	
						120V	230V							120V	230V
⊙	A01	2BL93380		PARTS, CONT DRIVE ASSY, SP		1	1		40	2BL27180		WIRE CONT SW		1	1
	1	•2BL22450		PLATE DRIVE CONT. B		1	1		41	2BL22810		PLATE TENSION A		1	1
⊙	2	•2BL22520		CLUTCH CONTAINER		1	1		42	72114320		PIN, DEV. UNIT HANDLE		1	1
	3	•2BL22460		SHAFT DRIVE CONT		1	1		43	2BL22830		PULLEY TENSION		1	1
⊙	4	•2BL22500		COUPLING CONTAINER		1	1		44	2BL22820		SPRING PULLEY		1	1
⊙	5	•2BL22510		SPRING DRIVE CONT.		1	1		45	2BL22391	302BL22391	PULLEY MPF DRIVE		2	2
⊙	6	•2BL22570		BUSH DRIVE CONT 8		2	2		46	2FG22080		PLATE DRIVE FEED B		1	1
⊙	7	•2BL22480		GEAR Z24S-P40		1	1								
⊙	8	•2BL22560		PULLEY CONT. DRIVE		1	1								
⊙	9	•2BL22590		BELT DRIVE CONTAINER		1	1								
	10	•2BL22440		PLATE DRIVE CONT. A		1	1								
⊙	11	•2BL22490		GEAR Z40S-Z25S		1	1								
⊙	12	•2BC06910		STOPPER 6		1	1								
⊙	13	•2BL27510		SOLENOID TONER		1	1								
⊙	14	•66127010		SWITCH,COVER OPEN		1	1								
⊙	15	2BL22330		GEAR Z41S-Z24S-P30		2	2								
⊙	16	2FG27160		CLUTCH FEED		2	2								
⊙	17	2BL22350		BELT DRIVE FEED		1	1								
	18	2BL22580		COLLAR BELT		3	3								
⊙	19	2A806250	5MVX111DN003	RING STOPPER		6	6								
⊙	20	2BC06980		STOPPER 5		2	2								
⊙	21	2BL22740	5MVG137DB025	GEAR M FEED Z25		4	4								
⊙	22	2BL22530		GEAR Z41S-P15		1	1								
⊙	23	2BL27581		LIFT MOTOR		2	2								
	24	2FG22090		BRACKET CLUTCH FEED		2	2								
⊙	25	67322230		BUSHING 8		2	2								
⊙	26	2BL22540		GEAR Z60S-P20		1	1								
⊙	27	2AR00170		PRIMARY PAPER FEED BUSHING ASSY		2	2								
⊙	28	2BL22420		GEAR Z41S-P18		1	1								
⊙	29	2BL22400		BELT DRIVE MPF		1	1								
	30	2BL22370		PLATE DRIVE MPF A		1	1								
⊙	31	2BL22550		GEAR Z40S-Z32S		1	1								
	32	2BL22380		PLATE DRIVE MPF B		1	1								
	33	2FG22070		PLATE DRIVE FEED A		1	1								
⊙	34	2FG27020		FEED MOTOR		1	1								
⊙	35	2BL22320		GEAR Z76H-Z35S		1	1								
	36	M2105740		MINIATURE CLAMP, UAMS-05S-2		1	1								
	37	M2109330		WIRE SADDLE, YMC-10-0 (KITAGAWA)		6	6								
	38	49513902	M2109010	WIRE SADDLE, WS-2NS		1	1								
	39	49628604	M2108080	SPACER, KGPS-3S		1	1								

- Parts with "•" are component parts or sub-assemblies of the assembly appearing immediately above them.
- Parts with "⊙" indicates the spare parts.

- Parts with "••" are component parts or sub-assembly with "•" appearing immediately above them.

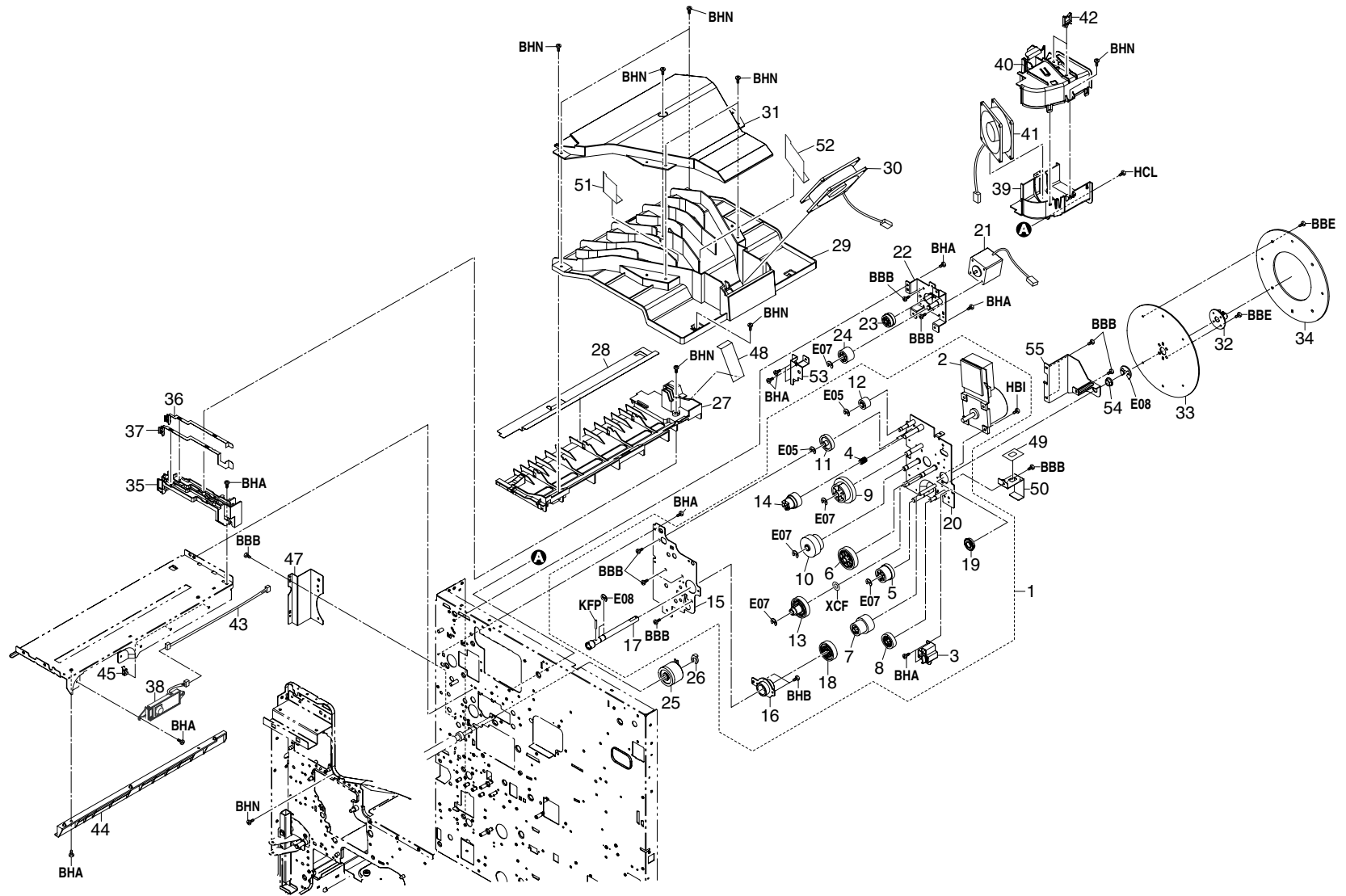


FIG. 16 Drive unit, 2

2FJ/2FH-4

SP	Ref.No.	Part.No.	Alternative.	Description	Applicable Model	Quantity		SP	Ref.No.	Part.No.	Alternative.	Description	Applicable Model	Quantity	
						120V	230V							120V	230V
⊙	1	2FH93110		PARTS, DRIVE UNIT DR-702		1	1	⊙	41	2FG27060		FAN MOTOR 2		1	1
⊙	2	•2FG27190		MAIN MOTOR		1	1	⊙	42	49513902	M2109010	WIRE SADDLE, WS-2NS		2	2
	3	•2BL22140		GUIDE DLP		1	1		43	2BL27120		WIRE CONTAINER		1	1
⊙	4	•2BL22240		SPRING JOINT FUSER		1	1		44	2BL02220		RAIL DRUM R		1	1
⊙	5	•2BL22220		GEAR Z36S-Z31H		1	1		45	M2109330		WIRE SADDLE, YMC-10-0 (KITAGAWA)		3	3
⊙	6	•2BL22190		GEAR Z50H		1	1		47	2BL23070		MOUNT REAR FAN		1	1
⊙	7	•2BL22180		GEAR Z37H-Z28H		1	1		48	2BL23100		FILM COOLING		1	1
⊙	8	•2BL22230		GEAR Z34H		1	1		49	2BL22880		FILM BKT CLUTCH		1	1
⊙	9	•2FG22030		GEAR Z59H-Z44S		1	1		50	2BL22150		BRACKET CLUTCH		1	1
⊙	10	•2BL22710	5MVG169DN019	GEAR Z76H-Z35H		1	1		51	2BL23140		FILM DUCT DLP B		1	1
⊙	11	•2BL22770	5MVG148DN027	GEAR Z37S		1	1		52	2BL23130		FILM DUCT DLP A		1	1
⊙	12	•2FG22040		GEAR Z22S		1	1		53	2FG22060		PLATE DRIVE EXIT B		1	1
⊙	13	•2BL22160		GEAR DRUM Z76H-Z30H		1	1		54	49021301	213+4410	BUSH,CUTTER		1	1
⊙	14	•2BL22210		GEAR JOINT Z32S		1	1		55	2BL22890		MOUNT FLYWHEEL		1	1
	15	•2FG22010		PLATE DRIVE FRONT		1	1								
⊙	16	•2BL22170		PLATE GUIDE DRUM		1	1								
	17	•2BL22840		SHAFT DRIVE DRUM FW		1	1								
⊙	18	•2BL22050		GEAR DRUM Z70H		1	1								
	19	•G3169000		BEARING 6900ZZNR		1	1								
	20	•2FG22020		PLATE DRIVE REAR		1	1								
⊙	21	2BL27560		MOTOR EJECT		1	1								
	22	2FG22050		PLATE DRIVE EXIT A		1	1								
⊙	23	2BL22800		GEAR Z47S-Z28S		1	1								
⊙	24	2BL22630		GEAR EXIT Z30S		1	1								
⊙	25	2FG27180		CLUTCH REGISTRATION		1	1								
⊙	26	2BC06980		STOPPER 5		1	1								
	27	2BL23020		DUCT DRUM		1	1								
	28	2FG23010		COVER DUCT DRUM		1	1								
	29	2BL23030		DUCT DLP		1	1								
⊙	30	2FG27130		FAN MOTOR 1		1	1								
	31	2BL23040		LID DLP DUCT		1	1								
	32	2BL22850		RETAINER FLYWHEEL		1	1								
	33	2BL22860		FLYWHEEL 190		1	1								
	34	2BL22870		WEIGHT 190		1	1								
	35	2BL26150		MOUNT BASE TERMINAL		1	1								
	36	2BL26160		PLATE TRANSFER A		1	1								
	37	2BL26170		PLATE SEPARATION A		1	1								
⊙	38	2BL01170		EMPTY SW ASSY		1	1								
	39	2BL23050		DUCT MAIN A		1	1								
	40	2BL23060		DUCT MAIN B		1	1								

- Parts with "•" are component parts or sub-assemblies of the assembly appearing immediately above them.
- Parts with "⊙" indicates the spare parts.

- Parts with "••" are component parts or sub-assembly with "•" appearing immediately above them.

FIG. 17 Electrical components

2FJ/2FH-4

SP	Ref.No.	Part.No.	Alternative.	Description	Applicable Model	Quantity		SP	Ref.No.	Part.No.	Alternative.	Description	Applicable Model	Quantity	
						120V	230V							120V	230V
⊙	1	2FJ01010		P.W.BOARD ASSY KP-5132 MAIN	FS-9120DN	1	1	⊙	39	2BL28051	5AAXTR050VDB	HIGH VOLTAGE PCB		1	1
⊙	1	5AAPRLGG4046AH	2FH01011	MAIN PCB ASS'Y	FS-9520DN	1	1	⊙	40	2BL27070		WIRE HIGH VOLTAGE(P)		1	1
⊙	2	2FH68030	5AAYB10U++01	ENGINE PWB ASSY /B10(IN) ENGINE PWB		1		⊙	41	3H826010		GASKET PRINTER A		1	1
⊙	2	2FH68020	5AAYB10E++02	ENGINE PWB ASSY /B10(CM) ENGINE PWB			1	⊙	42	2BL27140		WIRE FRONT(P)		1	1
	3	2BL27650		CORE 6-18X34		2	2	⊙	43	M2104210		EDGING,EDS-2		4	4
⊙	4	2C927210		SENSOR 248NL1		1	1	⊙	44	2BL26110		LEFT MOUNT I/L		1	1
	5	2BL27290		WIRE BYPASS FEED PI		1	1	⊙	45	2FG27120		SWITCH INTERLOCK		2	2
⊙	6	J0464080		RECEPTACLE,QR/P15-8S-C(02)(HIROSE)		2	2	⊙	46	2AR27040		SWITCH,INTERLOCK		1	1
	7	33927450		RETAINING PIN,DRAWER		6	6	⊙	47	35927420		SWITCH,SIZE		3	3
	8	2BL26200		MOUNT DRUM DRAWER		1	1	⊙	48	2BL26120		LEFT WORK PLATE I/L		1	1
	9	J7340100		RECEPTACLE,9715S-10A(IRS)		1	1	⊙	49	2BL27430		SWITCH,MAIN		1	1
	10	49513902	M2109010	WIRE SADDLE, WS-2NS		33	32	⊙	50	2BM27890		HUMIDITY SENSOR		1	1
	11	M2109330		WIRE SADDLE,YMC-10-0(KITAGAWA)		4	4		51	2BL04060		FRONT MOUNT COVER		1	1
	12	2FH26011	302FH26011	MOUNT MAIN PCB		1	1		52	2BL04080		INNER LEFT COVER		1	1
	13	M2108120		SPACER,KGLS-4S		2	2	⊙	53	2BL01160		TONER SW ASSY		1	1
	15	2AR00150		CASSETTE SWITCH ASSY		2	2		54	J5016050		CASE,BU05P-TR-PC-H(JST)		1	1
	16	*2AR07170		MOUNT,CASSETTE SWITCH		2	2		55	2BL27250		WIRE TONER DISPOSAL		1	1
⊙	17	*66127010		SWITCH,COVER OPEN		2	2		56	2BL26210	5MVB743SL004	RAIL OPTION A		2	2
	18	2FG26010		MOUNT POWER PCB		1	1		57	2BL26220	5MVB743SL005	RAIL OPTION B		2	2
⊙	19	2FG28021		POWER SOURCE PCB (100)		1			58	2BL04450		GROUND PLATE INNER L		2	2
⊙	19	2FG28032		POWER SOURCE PCB (200)			1	⊙	59	3H827010		SHEET RADIATOR		1	1
	20	2BJ26210		SHIELD SUBWIRE		1	1	⊙	60	2FG27140		FAN MOTOR 3		2	2
	21	2BJ26100		MOUNT OPTION I/F (E)		1	1	⊙	61	2FH01960	5AAPRMEG4023LRP	P.W.B ASSY KP-893 /FLASH DIMM B10 FS36		1	1
	22	49829401	M2109020	WIRE SADDLE, WS-2WS		1	1		62	2FH26020		SHIELD		1	1
⊙	23	J0326120		CASE,54082-1215(MOLEX)		1	1		63	2BL04460		SPACER WIRE		1	1
⊙	24	2BL27280		WIRE FINISHER GND		1	1		64	2BL26280		SHAFT I/L		1	1
	25	2AC27880		WIRE FG,FINISHER		1	1	⊙	65	M1660010		FUSE,237010(LITTEL)		3	3
⊙	26	2FH27020		WIRE OPTION(P)		1	1		67	3BH26020	5MMS636SD009	PLATE OPTION		2	2
	27	2AR26340		MOUNT,DECK CONNECTOR		1	1		68	3BH26030		PIN OPTION		4	4
	28	M2108670		SPACER,KGPS-6RF(KITAGAWA)		1	1		69	2BL26190		MOUNT CONNECTOR		1	1
	29	2BM26020	5MVX621SH003	GUID CF CARD		1	1		70	2BL26180		RAIL MAIN PCB		2	2
	30	M2104280		EDGING,EDS-25L(KITAGAWA)		1	1		71	2BL27010		WIRE PAPER FEED(P)		2	2
	31	2BL26290		MOUNT FIXING DRAWER		1	1		72	2BL26020		UPPER SHIELD		1	1
	32	2BL27030		WIRE DRAWER		1	1		73	2BL27260		WIRE OPE INNER(P)		1	1
	33	2FH27030		WIRE PRIMARY (P)		1	1		74	2BL27090		WIRE OPE REAR(P)		1	1
	34	2BL26060		PIN TERMINAL		4	4	⊙	75	2BL26260		COVER POWER PCB		1	1
	35	2BL26070		SPRING TERMINAL		1	1		78	19527400		POWER CORD (120)	Excl. Taiwan	1	
	36	2BL26270		SPRING TERMINAL T		3	3		82	2BL26250		MOUNT INLET CORD 230		1	1
	37	2BL26051		CASE HIGH VOLTAGE		1	1		83	2FG01090		INLET ASSY		1	1
	38	2BL26080		GROUND PLATE HV		1	1		88	63827080		FERRITE CORE			2

- Parts with "*" are component parts or sub-assemblies of the assembly appearing immediately above them.
- Parts with "⊙" indicates the spare parts.

- Parts with "**" are component parts or sub-assembly with "*" appearing immediately above them.

FIG. 17 Electrical components

2FJ/2FH-4

SP	Ref.No.	Part.No.	Alternative.	Description	Applicable Model	Quantity	
						120V	230V
	89	49513902	M2109010	WIRE SADDLE, WS-2NS	Incl. Taiwan		1
	90	2AR27800		POWER CORD(230)	KMDE/KMFR/KMTH		1
	91	29927231		POWER CODE AS(240)	KMAUS only		1
	95	79327580		POWER CODE GB	KMUK/KMSG/KMHG		1
	96	65027600		POWER CODE 110	Taiwan only	1	
	97	2FH26030		MOUNT FILTER PCB		1	1
	98	2FG27370		WIRE FILTER PCB		1	1
⊙	99	2FG28121		NOISE FILTER PCB 100		1	
⊙	99	2FG28131		NOISE FILTER PCB 200			1
	100	M2108920		SPACER,KGLS-5RT		1	1
	101	3H826050		SHIELD CF		1	1
	102	2FG27640		CORE ATFC-16-8-16		1	1
	103	2FG27520		GASKET LID PRINTER		1	1
	104	3CR27010		SHIELD A GASKET		1	1

- Parts with "•" are component parts or sub-assemblies of the assembly appearing immediately above them.
- Parts with "⊙" indicates the spare parts.

- Parts with "••" are component parts or sub-assembly with "•" appearing immediately above them.

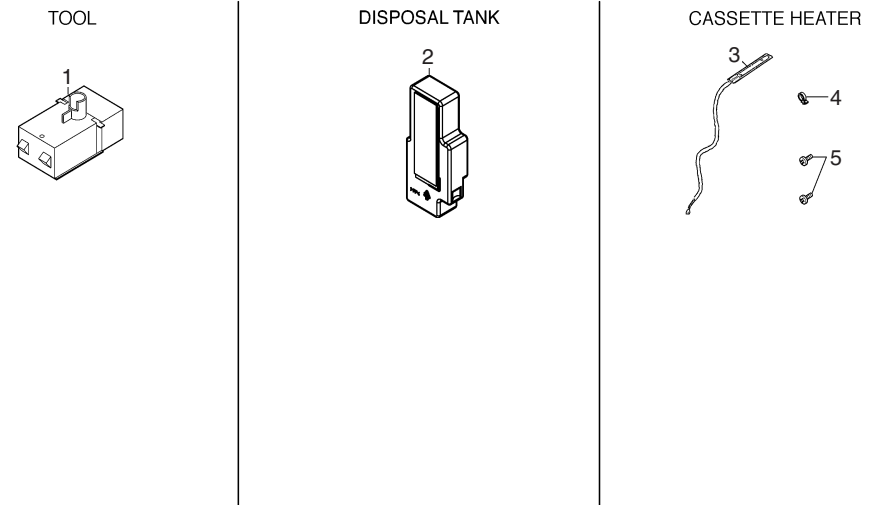


FIG. 18 Option

2FJ/2FH

SP	Ref.No.	Part.No.	Alternative.	Description	Applicable Model	Quantity	
						120V	230V
⊙	1	4AK85050		GRID CLEANER 3 ASSY		1	1
⊙	2	2BL93130		TB-700 TONER DISPOSAL TANK ASSY		1	1
⊙	3	33960020		HEATER CASSETTE (240)			1
⊙	3	34860030		HEATER CASSETTE (120)		1	
	4	M2107120		BINDING BAND SG-130		1	1
	5	B1304060		BINDING SCREW BVM4X6(BLACK)		2	2

SP	Ref.No.	Part.No.	Alternative.	Description	Applicable Model	Quantity	
						120V	230V
		072FH93050	1702FH93050	SET,KIT,MK703TW(OPTION)	FS-9520DN/Taiwan only		1
		072FJTTW	1702FJTTW0	SET,KIT,MK702TW(OPTION)	FS-9120DN/Taiwan only		1
⊙		•2BL93010	5PLPXHFAPKX	DV-700			1
⊙		•2BL16130		GUIDE REGIST F			2
⊙		•2FG93110		PARTS, GUIDE TRANSFER ASSY			1
⊙		•2BL93021		PARTS,DRUM UNIT KME50,SP	FS-9520DN		1
⊙		•2BK93031		PARTS,DRUM UNIT KME36,SP	FS-9120DN		1
⊙		•2FH93050	302FH93050	PARTS, FK-702 (TW), SP	Taiwan only		1
⊙		•2FH93040		PARTS,TR-702,SP			1
⊙		•2BJ06010		PULLEY FEED A			3
⊙		•2AR07220		PULLEY,PAPER FEED			2
⊙		•2AR07230		PULLEY,SEPARATION			3
⊙		•2BL93450		PARTS,REGISTRATION			1
⊙		•2BL07950		UNDER CLEANER REGIST			1
⊙		•61706770		UPPER PULLEY,BYPASS			1
		2FH82020		SET,KIT,MK703U(OPTION)	FS-9520DN		1
		2FJ82010		SET,KIT,MK702U(OPTION)	FS-9120DN		1
⊙		•2BL93010	5PLPXHFAPKX	DV-700			1
⊙		•2BL16130		GUIDE REGIST F			2
⊙		•2FG93110		PARTS, GUIDE TRANSFER ASSY			1
⊙		•2BL93021		PARTS,DRUM UNIT KME50,SP	FS-9520DN		1
⊙		•2BK93031		PARTS,DRUM UNIT KME36,SP	FS-9120DN		1
⊙		•2FH93021		PARTS,FK-702(U),SP			1
⊙		•2FH93040		PARTS,TR-702,SP			1
⊙		•2BJ06010		PULLEY FEED A			3
⊙		•2AR07220		PULLEY,PAPER FEED			2
⊙		•2AR07230		PULLEY,SEPARATION			3
⊙		•2BL93450		PARTS,REGISTRATION			1
⊙		•2BL07950		UNDER CLEANER REGIST			1
⊙		•61706770		UPPER PULLEY,BYPASS			1

- Parts with "•" are component parts or sub-assemblies of the assembly appearing immediately above them.
- Parts with "⊙" indicates the spare parts.

- Parts with "••" are component parts or sub-assembly with "•" appearing immediately above them.

FIG. 19 Parts Packages

2FJ/2FH-4

SP	Ref.No.	Part.No.	Alternative.	Description	Applicable Model	Quantity	
						120V	230V
⊙		20305130		LABEL L,HIGH TEMPERATURE CAUTION (EXP)		1	1
⊙		2BL05240		LABEL OFF		1	1
⊙		2FH93150	302FH93150	PARTS PACKING ASSY 51U	FS-9520DN Excl. Taiwan	1	
⊙		2FH93160	302FH93160	PARTS PACKING ASSY 51E	FS-9520DN Incl. Taiwan		1
⊙		2FJ93010	302FJ93010	PARTS PACKING ASSY 36U	FS-9120DN Excl. Taiwan	1	
⊙		2FJ93020	302FJ93020	PARTS PACKING ASSY 36E	FS-9120DN Incl. Taiwan		1

SP	Ref.No.	Part.No.	Alternative.	Description	Applicable Model	Quantity	
						120V	230V
		2FH82030		SET,KIT,MK703E(OPTION)	FS-9520DN		1
		2FJ82020		SET,KIT,MK702E(OPTION)	FS-9120DN		1
⊙		•2BL93010	5PLPXHFAPKX	DV-700			1
⊙		•2BL16130		GUIDE REGIST F			2
⊙		•2FG93110		PARTS, GUIDE TRANSFER ASSY			1
⊙		•2BL93021		PARTS,DRUM UNIT KME50,SP	FS-9520DN		1
⊙		•2BK93031		PARTS,DRUM UNIT KME36,SP	FS-9120DN		1
⊙		•2FH93031		PARTS,FK-702(E),SP			1
⊙		•2FH93040		PARTS,TR-702,SP			1
⊙		•2BJ06010		PULLEY FEED A			3
⊙		•2AR07220		PULLEY,PAPER FEED			2
⊙		•2AR07230		PULLEY,SEPARATION			3
⊙		•2BL93450		PARTS,REGISTRATION			1
⊙		•2BL07950		UNDER CLEANER REGIST			1
⊙		•61706770		UPPER PULLEY,BYPASS			1
		2FH82040		SET,KIT,MK703(CHN)(OPTION)	FS-9520DN		1
⊙		•2BL93010	5PLPXHFAPKX	DV-700			1
⊙		•2BL16130		GUIDE REGIST F			2
⊙		•2FG93110		PARTS, GUIDE TRANSFER ASSY			1
⊙		•2BL93021		PARTS,DRUM UNIT KME50,SP	FS-9520DN		1
⊙		•2FH93031		PARTS,FK-702(E),SP			1
⊙		•2FH93040		PARTS,TR-702,SP			1
⊙		•2BJ06010		PULLEY FEED A			3
⊙		•2AR07220		PULLEY,PAPER FEED			2
⊙		•2AR07230		PULLEY,SEPARATION			3
⊙		•2BL93450		PARTS,REGISTRATION			1
⊙		•2BL07950		UNDER CLEANER REGIST			1
⊙		•61706770		UPPER PULLEY,BYPASS			1

- Parts with "•" are component parts or sub-assemblies of the assembly appearing immediately above them.
- Parts with "⊙" indicates the spare parts.

- Parts with "••" are component parts or sub-assembly with "•" appearing immediately above them.

CLASSIFICATION OF THE SCREWS IN ILLUSTRATION

<u>REF.</u>	<u>ITEM#</u>	<u>DESCRIPTION</u>	<u>REF.</u>	<u>ITEM#</u>	<u>DESCRIPTION</u>
AAK	B0003250	ROUND HEAD SCREW M3X25	EAE	B3054100	TAPPING SCREW M4X10 (A TYP)
ABE	B0304060	ROUND HEAD SCREW M4X6 (BLACK)	EAX	B3062060	TAPPING SCREW M2X6(B-TYP)
ABW	B0300930	THREAD FORMING SCREW 6-32X0.25 (INCH)	FBF	B3073100	COUNTER-SUNK HEAD TAPPING SCREW M3X10 (A TYP)
APE	B3013960	ROUND HEAD TAP-TIGHT SCREW P,M3X06	GEF	B9604060	GROUNDING SCREW M4X6 (BRASS,NI)
AZB	B0024120	ROUND HEAD SCREW WITH SW.W M4X12	HAD	B4003050	TRIPLE SCREW M3X05
BAA	B1003040	BINDING SCREW,CVM3X4	HAG	B4000080	TRIPLE SCREW M3X8
BAB	B1003060	BINDING SCREW CVM3X6	HAH	B4003080	TRIPLE TAPPING SCREW M3X8 B-TYP.
BAC	B1003080	BINDING SCREW M3X8	HAO	B4043080	TRIPLE TAP-TITE P SCREW M3X08
BAE	B1005080	BINDING SCREW M5X8	HAT	B4144080	+TP TAP-TITE P SCREW(CHROMIUM)
BAL	B1003050	BINDING SCREW CVM3X5	HAU	B4043080	TRIPLE TAP-TITE P SCREW M3X08
BAN	B1004060	BINDING SCREW CVM4X6	HAV	B4044080	+TP TAP TIGHT P CHROMATE M4X08
BAS	B1000030	BINDING SCREW CVM 2.6X03	HAY	B4053060	TRIPLE TAP-TITE S SCREW M3X06
BAW	B1004080	BINDING SCREW M4X8	HBA	B4303050	TRIPLE SCREW M3X5 (BLACK)
BBA	B1303040	BINDING SCREW BVM3X4 (BLACK)	HBD	B4304060	TRIPLE SCREW M4X6 (BLACK)
BBB	B1303050	BINDING SCREW BVM3X5 (BLACK)	HBH	B4303060	TRIPLE SCREW M3X6 (BLACK)
BBC	B1303100	BINDING SCREW BVM3X10 (BLACK)	HCA	B4104060	TRIPLE SCREW M4X6(CHROMIUM)
BBD	B1304040	BINDING SCREW BVM4X4 (BLACK)	HCB	B4103050	TRIPLE SCREW M3X05 (CHROMIUM)
BBE	B1304060	BINDING SCREW BVM4X6 (BLACK)	HCD	B4103080	TRIPLE SCREW M3X08(CHROMIUM)
BBF	B1304080	BINDING SCREW BVM4X8 (BLACK)	HCF	B4104080	TRIPLE SCREW M4X08(CHROMIUM)
BBJ	B1304200	BINDING SCREW BVM4X20 (BLACK)	HCG	B4104120	TRIPLE SCREW M4X12(CHROMIUM)
BBN	B1304250	BINDING SCREW M4X25(BLACK)	HCH	B4104160	TRIPLE SCREW M4X16(CHROMIUM)
BBO	B1304300	BINDING SCREW BVM4X30 (BLACK)	HCK	B4103100	TRIPLE SCREW M3X10(CHROMIUM)
BBP	B1303120	BINDING SCREW BVM3X12 (BLACK)	HCL	B4103060	TRIPLE SCREW M3X06(CHROMIUM)
BBQ	B1300100	BINDING SCREW BVM2.3X10 (BLACK)	HDA	B4343060	TRIPLE TAP-TITE P SCREW M3X06(BLACK)
BBR	B1303080	BINDING SCREW BVM3X8 (BLACK)	HDB	B4343080	TRIPLE TAP-TITE P SCREW M3X08(BLACK)
BBU	B1303140	BINDING SCREW BVM3X14 (BLACK)	HDE	B4143080	+TP TRIPLE TAP-TITE P SCREW M3X08(CR)
BCF	B1104080	BINDING SCREW VM4X8 (CR)	HDJ	B4043120	TRIPLE TAP-TITE P SCREW M3X12
BEA	B1603050	BINDING SCREW M3X5 (BRASS,NI)	HDK	B4144100	+TP TAP-TITE P SCREW M4X10(CHROMIUM)
BHA	B3023060	BINDING TAP TITE S SCREW M3X6	KAK	E0020080	SPRING PIN 2X8
BHB	B3023080	BINDING TAP TIGHT SCREW M3X8	KAL	E0020100	SPRING PIN 2X10
BHC	B3024060	BINDING TAP-TIGHT SCREW M4X6	KAM	E0020120	SPRING PIN 2X12
BHD	B3024080	BINDING TAP-TIGHT SCREW M4X8	KAN	E0020140	SPRING PIN 2X14
BHG	B3023100	BINDING TAP TIGHT SCREW M3X10	KFB	E5120120	SPRING PIN H7A 2X12 SUS
BHK	B3023140	BINDING TAP TIGHT SCREW M3X14	KFP	E5120180	PARALLEL PIN H7A 2X18 SUS
BHN	B8013080	BINDING TAP-TIGHT SCREW M3X08	KFQ	E5120200	SPRING PIN H7A 2X20 SUS
BHP	B8314120	BINDING TAP-TITE P BRONZE SCREW M4X12	KKA	E0030220	SPRING PIN 3X22
BHU	B8013120	BINDING TAP-TITE P SCREW M3X12	KKJ	E0025250	SPRING PIN 2.5X25
BHV	B3313060	+BINDING TAP-TIGHT P BRONZE SCREW M3X06	NAD	C1004000	NUT NM4
BUH	B8003060	BINDING TAP-TIGHT P SCREW M3X06	NAK	C1014000	NUT NSM4
BVF	B1623120	+BINDING SCREW WITH SW,M3X12(BRASS,NI)	RDD	D4000400	STOP RING CSTW-4
BVH	B1300030	BINDING SCREW BVM 2.6X03(BLACK)	RDE	D4000500	STOP RING CSTW-5
BVV	B1324080	BINDING SCREW WITH SW (BLACK) M4X8	TGB	C4204000	CROWN WASHER TWM4
BVY	B1323080	BINDING SCREW WITH SW(BLACK)M3X8	WAB	C2003080	PLAIN WASHER PWM3
BVZ	B1323120	BINDING SCREW WITH SW(BLACK)M3X12	WBA	C2303080	PLAIN WASHER BPWM3 (BLACK)
CAE	B2003100	COUNTER-SUNK HEAD SCREW FHM3X10	WBB	C2304080	PLAIN WASHER BPWM4-8 (BLACK)
E03	D1000300	STOP RING (E-3)	WPG	C2808200	POLYESTER SLIDER WASHER 8X20X0.5T
E04	D1000400	STOP RING (E-4)	XBC	C2893950	SHIM 6.2-0.25T
E05	D1000500	STOP RING (E-5)	XBF	C2895120	SHIM 8.2-0.25T
E07	D1000700	STOP RING (E-7)	XCF	C2895130	SHIM 8.2-0.5T
E08	D1000800	STOP RING E-8	XDG	C2895140	SHIM 8.2X0.8T

KYOCERA MITA EUROPE B.V.

Hoeksteen 40, 2132 MS Hoofddorp,
The Netherlands
Phone: +31.(0)20.654.0000
Home page: <http://www.kyoceramita-europe.com>
Email: info@kyoceramita-europe.com

KYOCERA MITA NEDERLAND B.V.

Hoeksteen 40 2132 MS Hoofddorp,
The Netherlands
Phone: +31.(0)20.587.7200

KYOCERA MITA (UK) LTD.

8 Beacontree Plaza
Gillette Way, Reading Berks RG2 0BS,
UK
Phone: +44.(0)118.931.1500

KYOCERA MITA ITALIA S.P.A.

Via Verdi 89 / 91 20063 Cernusco sul Naviglio,
(Milano), Italy
Phone: +39.02.92179.1

S.A. KYOCERA MITA BELGIUM N.V.

Hermesstraat 8A 1930 Zaventem,
Belgium
Phone: +32.(0)2.720.9270

KYOCERA MITA FRANCE S.A.

Parc Les Algorithmes, Saint Aubin
91194 GIF-SUR-YVETTE,
France
Phone: +33.(0)1.6985.2600

KYOCERA MITA ESPAÑA S.A.

Edificio Kyocera, Avda de Manacor N. 2,
Urb. Parque Rozas 28290 Las Rozas, Madrid,
Spain
Phone: +34.(0)91.631.8392

KYOCERA MITA FINLAND OY

Kirvesmiehenkatu 4 00810 Helsinki,
Finland
Phone: +358.(0)9.4780.5200

KYOCERA MITA (SCHWEIZ) AG

Industriestrasse 28, 8604 Volketswil,
Switzerland
Phone: +41.(0)1.908.4949

KYOCERA MITA DEUTSCHLAND GMBH

Mollsfeld 12-40670 Meerbusch,
Germany
Phone: +49.(0)2159.918.0

KYOCERA MITA GMBH AUSTRIA

Eduard-Kittenberger Gasse 95
A-1230 Wien,
Austria
Phone: +43.(0)1.86338.401

KYOCERA MITA SVENSKA AB

Vretenragen 2, 6tr 171 54 Solna,
Sweden
Phone: +46.(0)8.546.550.00

KYOCERA MITA NORGE

Postboks 150 Oppsal, NO 0619 Oslo
Olaf Helsetsvai 6, NO 0694 Oslo,
Norway
Phone: +47.(0)22.62.73.00

KYOCERA MITA DANMARK A/S

Slotsmarken 11, 2 DK-2970 Hørsholm,
Denmark
Phone: +45.7022.3880

KYOCERA MITA PORTUGAL LDA.

Rua do Centro Cultural, no 41 1700-106 Lisbon,
Portugal
Phone: +351.(0)21.843.6780

KYOCERA MITA SOUTH AFRICA (PTY) LTD.

527 Kyalami Boulevard,
Kyalami Business Park Midrand,
South Africa
Phone: +27.(0)11.540.2600

KYOCERA MITA AMERICA, INC.

Headquarters:
225 Sand Road,
Fairfield, New Jersey 07004-0008,
U.S.A.
Phone: (973) 808-8444

KYOCERA MITA AUSTRALIA PTY. LTD.

Level 3, 6-10 Talavera Road, North Ryde,
N.S.W. 2113 Australia
Phone: (02) 9888-9999

KYOCERA MITA NEW ZEALAND LTD.

1-3 Parkhead Place, Albany
P.O. Box 302 125 NHPC, Auckland,
New Zealand
Phone: (09) 415-4517

KYOCERA MITA (THAILAND) CORP., LTD.

9/209 Ratchada-Prachachem Road,
Bang Sue, Bangkok 10800, Thailand
Phone: (02) 586-0320

KYOCERA MITA SINGAPORE PTE LTD.

121 Genting Lane, 3rd Level,
Singapore 349572
Phone: 67418733

KYOCERA MITA HONG KONG LIMITED

11/F., Mita Centre,
552-566, Castle Peak Road,
Tsuen Wan, New Territories,
Hong Kong
Phone: 24297422

KYOCERA MITA TAIWAN Corporation.

7F-1~2, No.41, Lane 221, Gangchi Rd.
Neihu District, Taipei, Taiwan, 114. R.O.C.
Phone: (02) 87511560

KYOCERA MITA Corporation

2-28, 1-chome, Tamatsukuri, Chuo-ku
Osaka 540-8585, Japan
Phone: (06) 6764-3555
<http://www.kyoceramita.com>

© 2005 KYOCERA MITA Corporation

 **KYOCERA** is a trademark of Kyocera Corporation

Printed in Holland

KYOCERA MITA AMERICA, INC.

Headquarters:

225 Sand Road,
Fairfield, New Jersey 07004-0008
TEL : (973) 808-8444
FAX : (973) 882-6000

New York Branch:

1410 Broadway 23rd floor
New York, NY 10018
TEL : (917) 286-5400
FAX : (917) 286-5402

Northeastern Region:

225 Sand Road,
Fairfield, New Jersey 07004-0008
TEL : (973) 808-8444
FAX : (973) 882-4401

Midwestern Region:

201 Hansen Court Suite 119
Wood Dale, Illinois 60191
TEL : (630) 238-9982
FAX : (630) 238-9487

Western Region:

14101 Alton Parkway,
Irvine, California 92618-7006
TEL : (949) 457-9000
FAX : (949) 457-9119

Southeastern Region:

1500 Oakbrook Drive,
Norcross, Georgia 30093
TEL : (770) 729-9786
FAX : (770) 729-9873

Southwestern Region:

2825 West Story Road,
Irving, Texas 75038-5299
TEL : (972) 550-8987
FAX : (972) 252-9786

National Operation Center & National Training Center:

2825 West Story Road,
Irving, Texas 75038-5299
TEL : (972) 659-0055
FAX : (972) 570-5816

Latin America Division:

8240 N.W. 52nd. Terrace Dawson Building,
Suite 108 Miami, Florida 33166
TEL : (305) 421-6640
FAX : (305) 421-6666

KYOCERA MITA CANADA, LTD.

6120 Kestrel Road, Mississauga,
Ontario L5T 1S8, Canada
TEL : (905) 670-4425
FAX : (905) 670-8116

KYOCERA MITA MEXICO, S.A. DE C.V.

Av. 16 de Septiembre #407
Col. Santa Inés,
Azcapotzalco México,
D.F. 02130, México
TEL : (55) 5383-2741
FAX : (55) 5383-7804

© 2005 KYOCERA MITA Corporation
<http://www.kyoceramita.com>

Printed in U.S.A.