



Maintenance and Assembly Drawings

This section contains mechanical assembly drawings and parts lists. Included are illustrations of parts and assemblies common to all 170PAX4 models, as well as their part numbers. Maintenance kits and their contents are also listed.

Contents

Front Cover	300
Door-Open Switch	302
Ribbon Supply and Take-Up Spindles	304
Spindle Gear Cover	306
Printhead	308
Upper Print Mechanism (Page 1 of 2)	310
Upper Print Mechanism (Page 2 of 2)	312
Lower Print Mechanism	314
Elastomer Peel Roller	316
Platen Roller	318
Label Guide Shelf	320
Segment Roller and Lower Media Sensor	322
Top Media Sensor Track	324
Electronics Enclosure Cover	326
Main Logic Board, Applicator Interface Board, and PCMCIA Board	328
AC and DC Power Supply Boards and Control Panel	330
Pulleys and Belts	252
Intermediate Pulley and Stepper Motor	334
Gears and Pulleys	336
Ribbon Supply and Ribbon Take-Up Gears and DC Motors	258
Power Entry and Ribbon Tension Control Board	340
Cable Harnesses	342
Cables	344



Notes • _____

General Information

This section identifies parts and assemblies in the 170PAX4 print engine using parts tables and figures. Both assemblies and parts are listed in the table, and the individual parts are identified in the associated figure.

In each of the tables, parts shown in bold face can be purchased. Parts shown italicized are not purchasable, but may be available as a maintenance kit. (This information appears in the key at the bottom of each parts table.)

Hardware items with an “HW” preceding the part number are not available as individual parts. You can purchase an item as part of a hardware kit in quantities listed in the parts table.

The parts tables list part numbers for both right-hand (RH) and left-hand (LH) print engines. All graphics shown in this section are for the right-hand 170PAX4 print engine only.

Table 23 • Front Cover

Item	Part Number	Description	Qty.
1	HW43676	Screw, Pan Head M5 × 0.8 (Qty. of 25)	8
2	49244M	Door Hinge Maintenance Kit	2
3	49687	Ground Strap	1
4	HW10477	Washer, Split (Qty. of 10)	10
5	HW44055	Nut, Hex M5 (Qty. of 25)	10
6	57377	Shroud, Rear (RH)	1
6	57378	Shroud, Rear (LH)	1
7	57379	Shroud, Front (RH)	1
7	57380	Shroud, Front (LH)	1
8	<i>57502</i>	Label, Zebra Logo 170PAX4	1
9	HW06262	Nut, Hex 6-32 (Qty. of 25)	4
10	HW01159	Washer, Lock External #6 (Qty. of 100)	4
11	49028	Shroud, Window	1
<p>Bold = Part available for purchase <i>Italic</i> = Part not available for purchase, listed and shown for reference only</p>			

Figure 169 • Front Cover

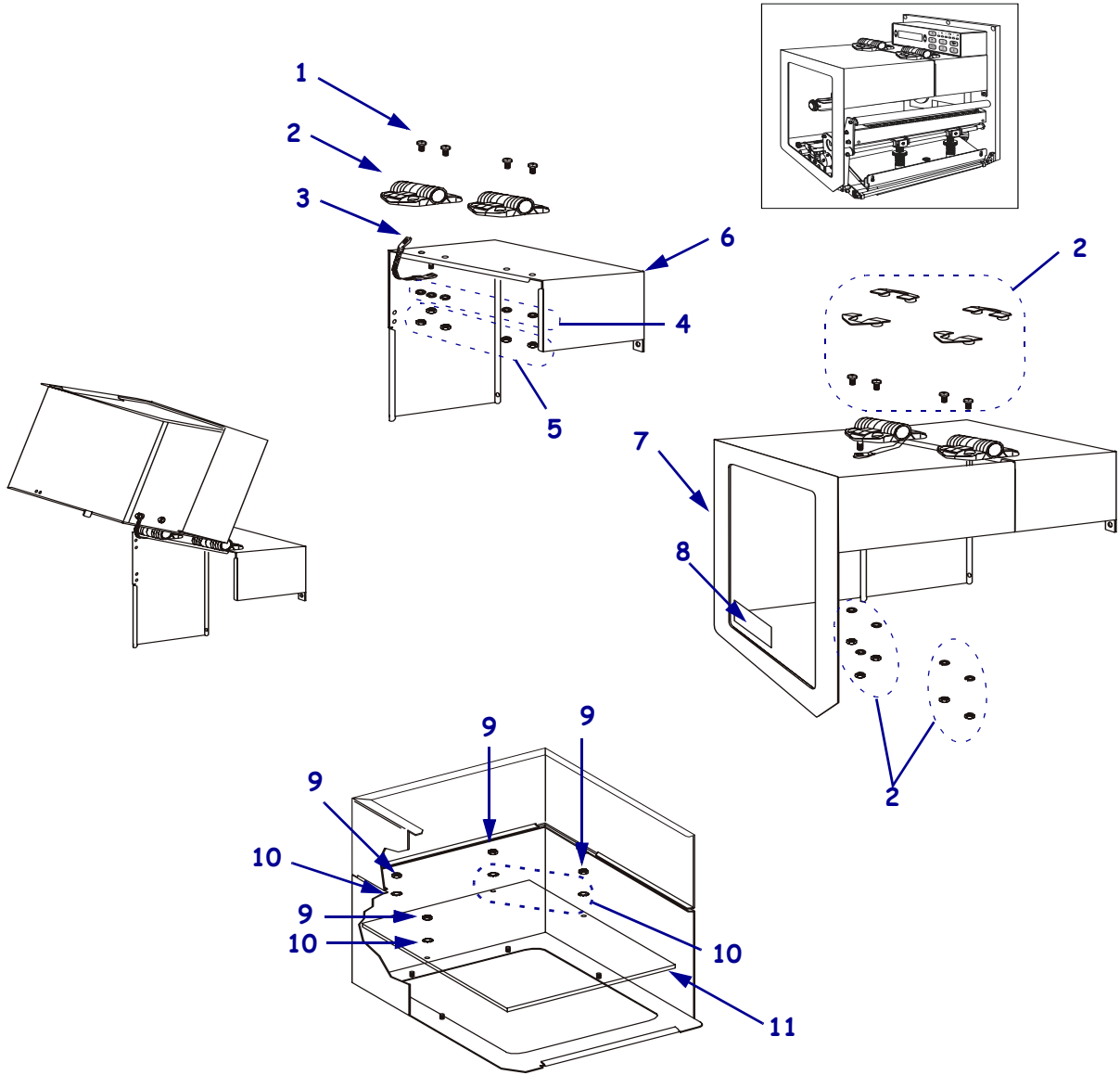


Table 24 • Door-Open Switch

Item	Part Number	Description	Qty.
1	49865	Label, Media Load (RH)	1
1	49928	Label, Media Load (LH)	1
2	HW10431	Screw, Cap M4 × 0.7 (Qty. of 25)	4
3	HW44192	Screw, Pan Head 2-56, 0.50 (Qty. of 25)	2
4	49858	Bar, Nut	1
5	57355M	Door-Open Switch Maintenance Kit	1

Bold = Part available for purchase

Italic = Part not available for purchase, listed and shown for reference only

Figure 170 • Door-Open Switch

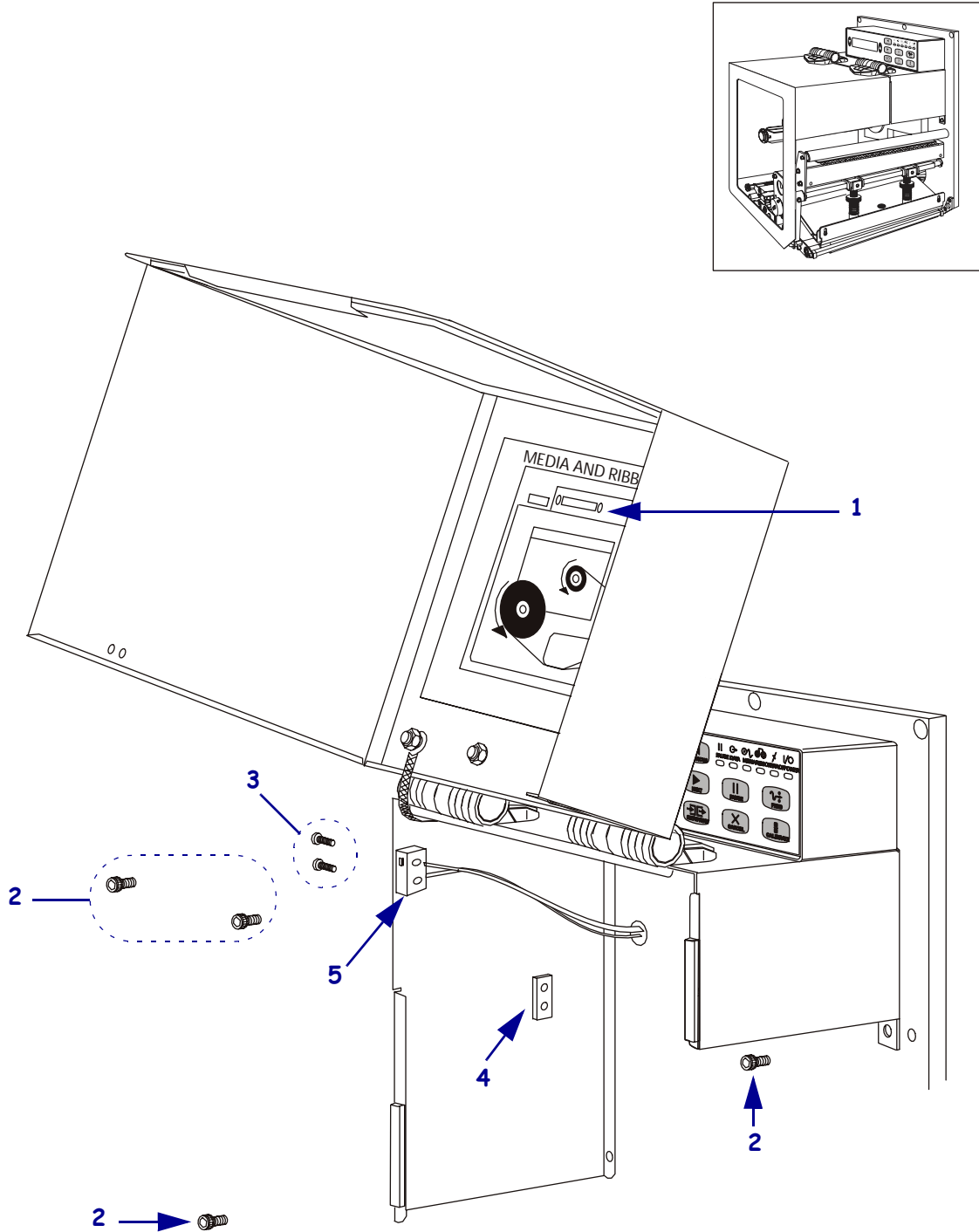


Table 25 • Ribbon Supply and Take-Up Spindles

Item	Part Number	Description	Qty.
1	HW10188	E-Ring (Qty. of 5)	2
2	49084	Shaft, Spindle	1
3	HW30114	Washer, Flat (Qty. of 25)	1*
4	49319M	Ribbon Take-Up Gear Maintenance Kit	1
4	49394M	Ribbon Supply Gear Maintenance Kit	1
5	49379	Spindle, Outer Ribbon	2
6	HW49441	Washer (Qty. of 50)	1*
7	HW49445	Washer (Qty. of 50)	1*

Bold = Part available for purchase

Italic = Part not available for purchase, listed and shown for reference only

* = As required to achieve 0.010 end play

Figure 171 • Ribbon Supply and Take-Up Spindles

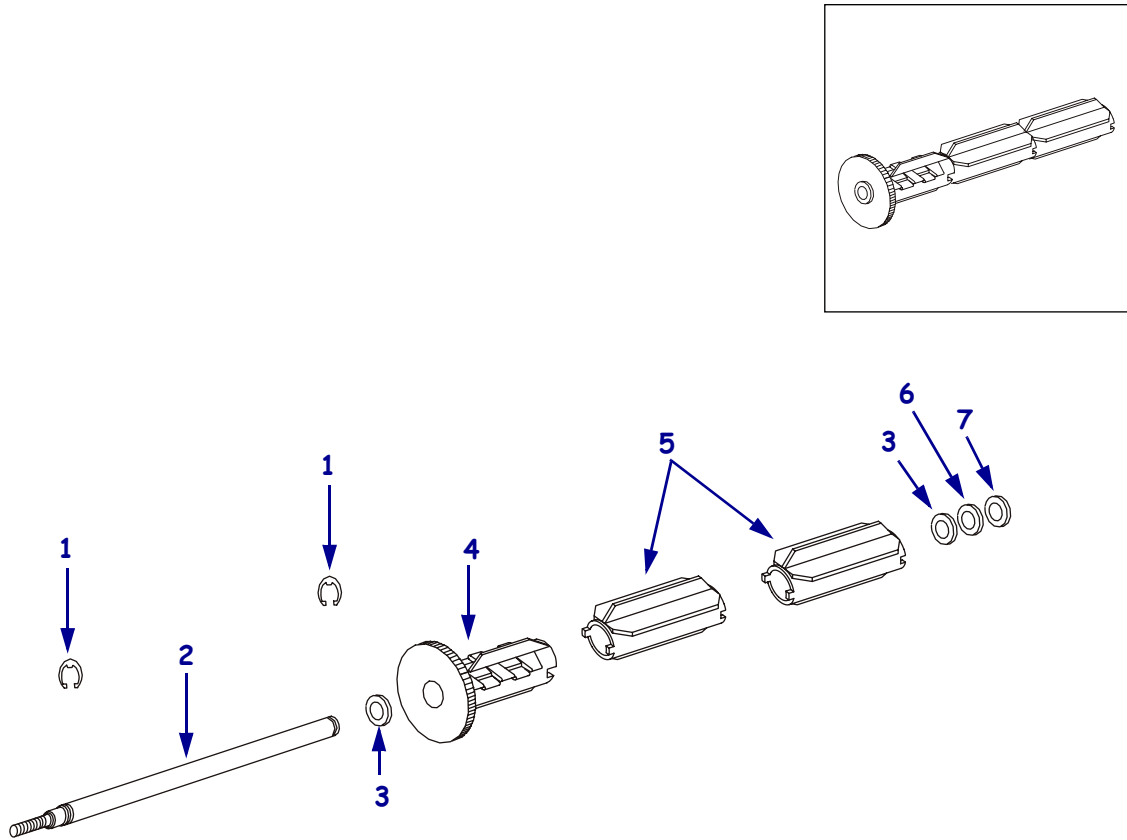


Table 26 • Spindle Gear Cover

Item	Part Number	Description	Qty.
1	49088	Cover, Spindle Gear (RH)	1
1	49488	Cover, Spindle Gear (LH)	1
2	HW10413	Screw, Cap M3 × 0.5 (Qty. of 50)	3

Bold = Part available for purchase
Italic = Part not available for purchase, listed and shown for reference only

Figure 172 • Spindle Gear Cover

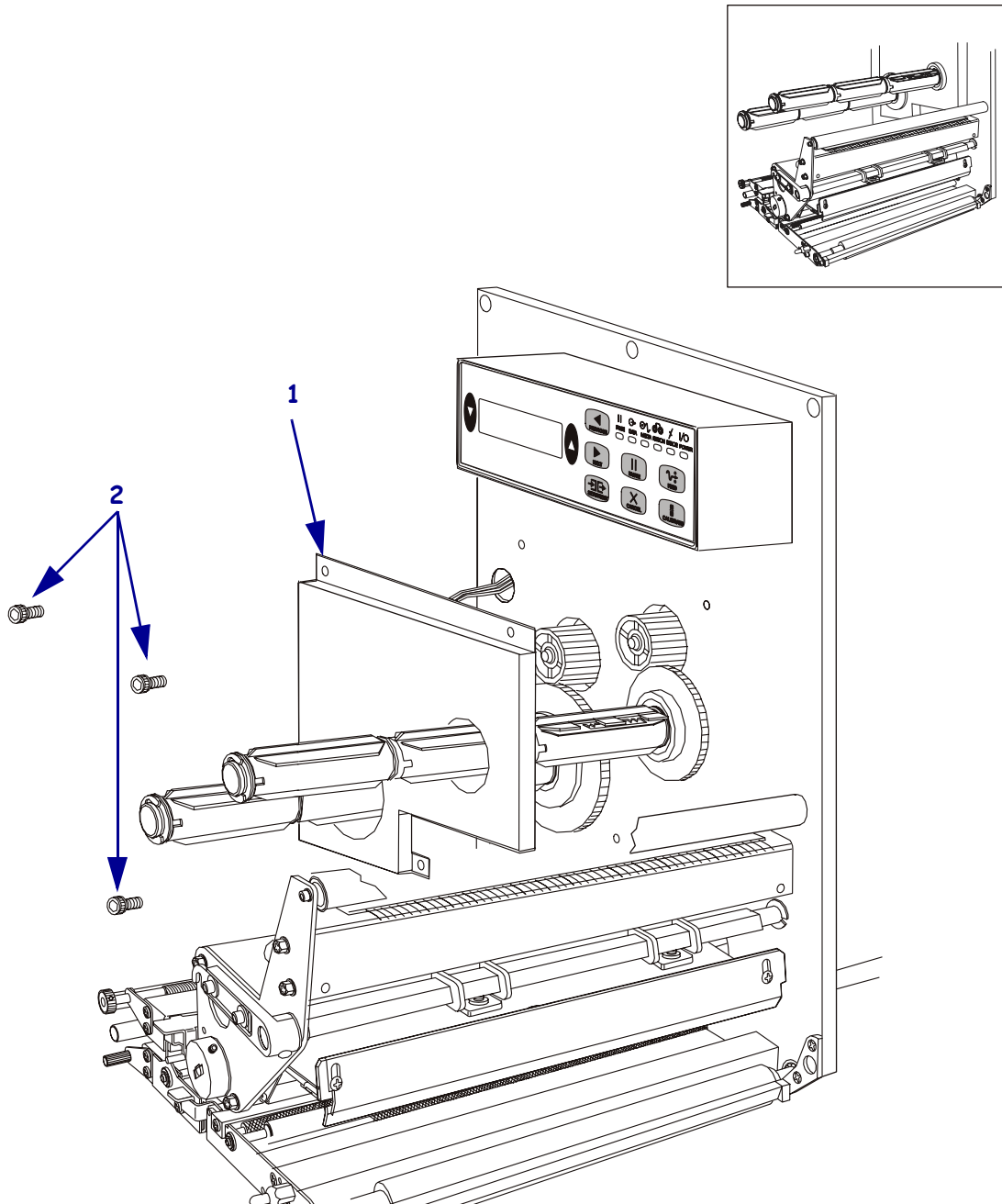


Table 27 • Printhead

Item	Part Number	Description	Qty.
1	HW10413	Screw, Cap M3 × 0.5 (Qty. of 50)	8
2	30781	Cable, Printhead Ground	1
3	HW01159	Washer, Lock External, #6 (Qty. of 100)	1
4	HW48182	Rivet, Snap (Qty. of 10)	2
5	57493	Plate, Pressure (RH)	1
5	57494	Plate, Pressure (LH)	1
6	57376	Pad, Pressure	
7	49226	Screw, Head Adjustment, M3	2
8	HW10471	Washer, Split M3 (Qty. of 50)	4
9	49164	Plate, Washer	1
10	HW30402-006	Screw, 6-32 (Qty. of 25)	2
11	57490	Bracket, Head Mounting (RH)	1
11	57491	Bracket, Head Mounting (LH)	1
12	22016	Screw, M3 × 0.5	1
13	49216	Plate, Strip	1
14	HW10401	Screw, M3 × 0.5 (Qty. of 50)	2
15	30007-7	Shaft, Roller	1
16	48099-7	Roller	1
17	49064	Bar, Adjustment	2
18	49032	Bar, Head Pivot	1
19	Q06020	Tie, Cable	2
20	57423M	Cable, Printhead Power	1
21	57360	Cable, Printhead Data	1
22	38000M	Printhead Maintenance Kit (203 dpi)	1
22	46500M	Printhead Maintenance Kit (300 dpi)	1
22	49494M	Printhead Conversion Maintenance Kit (203 to 300 dpi)	1
22	49497M	Printhead Conversion Maintenance Kit (300 to 203 dpi)	1
Bold = Part available for purchase			
<i>Italic</i> = Part not available for purchase, listed and shown for reference only			

Figure 173 • Printhead

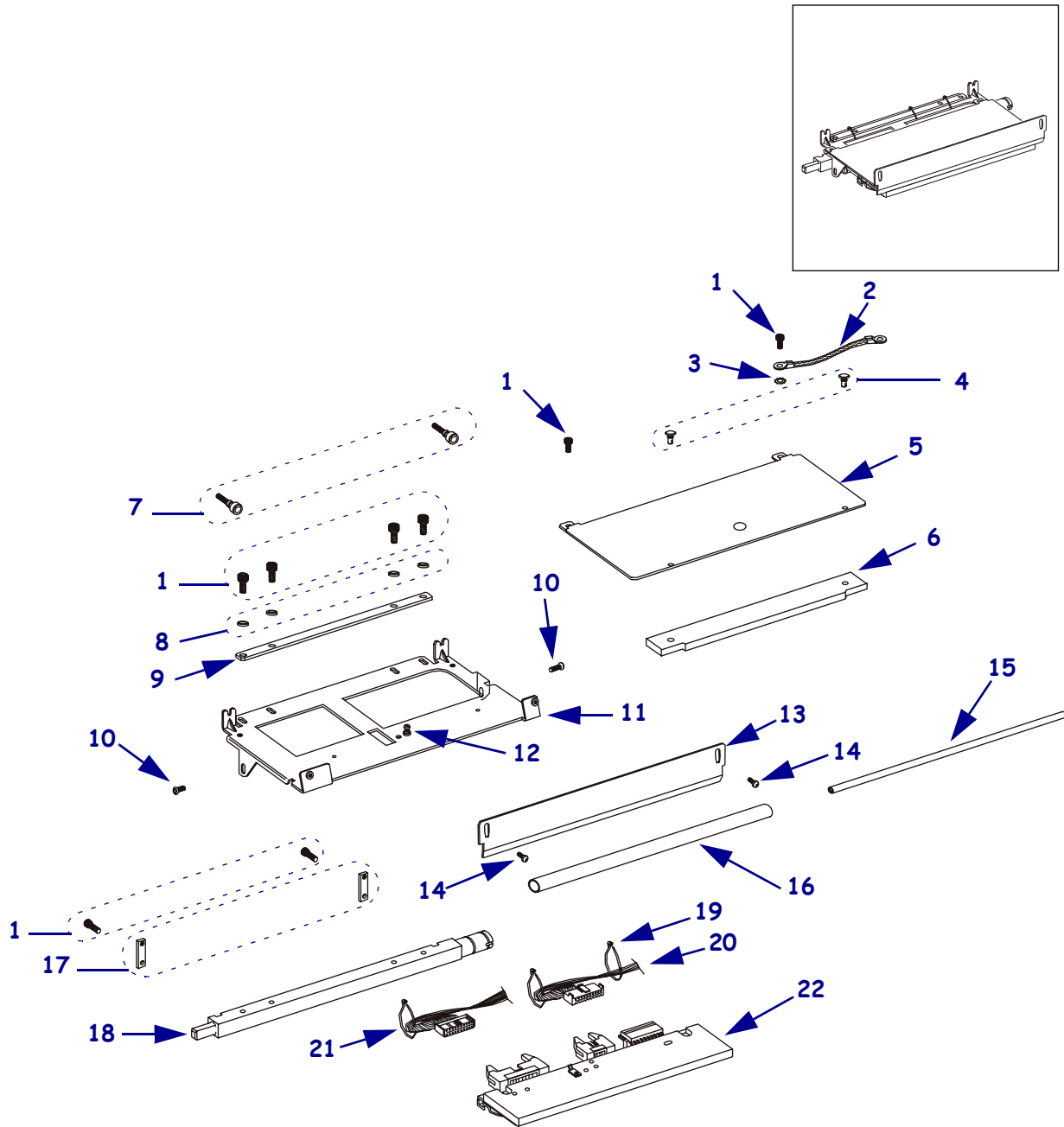


Table 28 • Upper Print Mechanism (Page 1 of 2)

Item	Part Number	Description	Qty.
1	49225	Nut, M6	2
2	49191	Washer, Split M6	2
3	HW30466	Washer (Qty. of 25)	2
4	HW49152	Screw, Hex M3 × 0.6 (Qty. of 25)	4
5	49319M	Ribbon Take-Up Assembly Maintenance Kit	1
6	49394M	Ribbon Supply Assembly Maintenance Kit	1
7	49242	Plug, Recessed Head Button	2
8	HW44924	Screw, M3 × 0.5 × 8 (Qty. of 25)	3
9	43705-1M	Static Brush Maintenance Kit	1
10	57492	Extrusion, Main	1
11	49279M	Lower Ribbon Guide Maintenance Kit	1
12	46665M	Ribbon Sensor Maintenance Kit	1
13	HW44053	Screw, M3 × 0.6 × 10 (Qty. of 10)	2
14	HW49292	Spacer, Compliant Spring (Qty. of 5)	2
<p>Bold = Part available for purchase <i>Italic</i> = Part not available for purchase, listed and shown for reference only</p>			

Figure 174 • Upper Print Mechanism (Page 1 of 2)

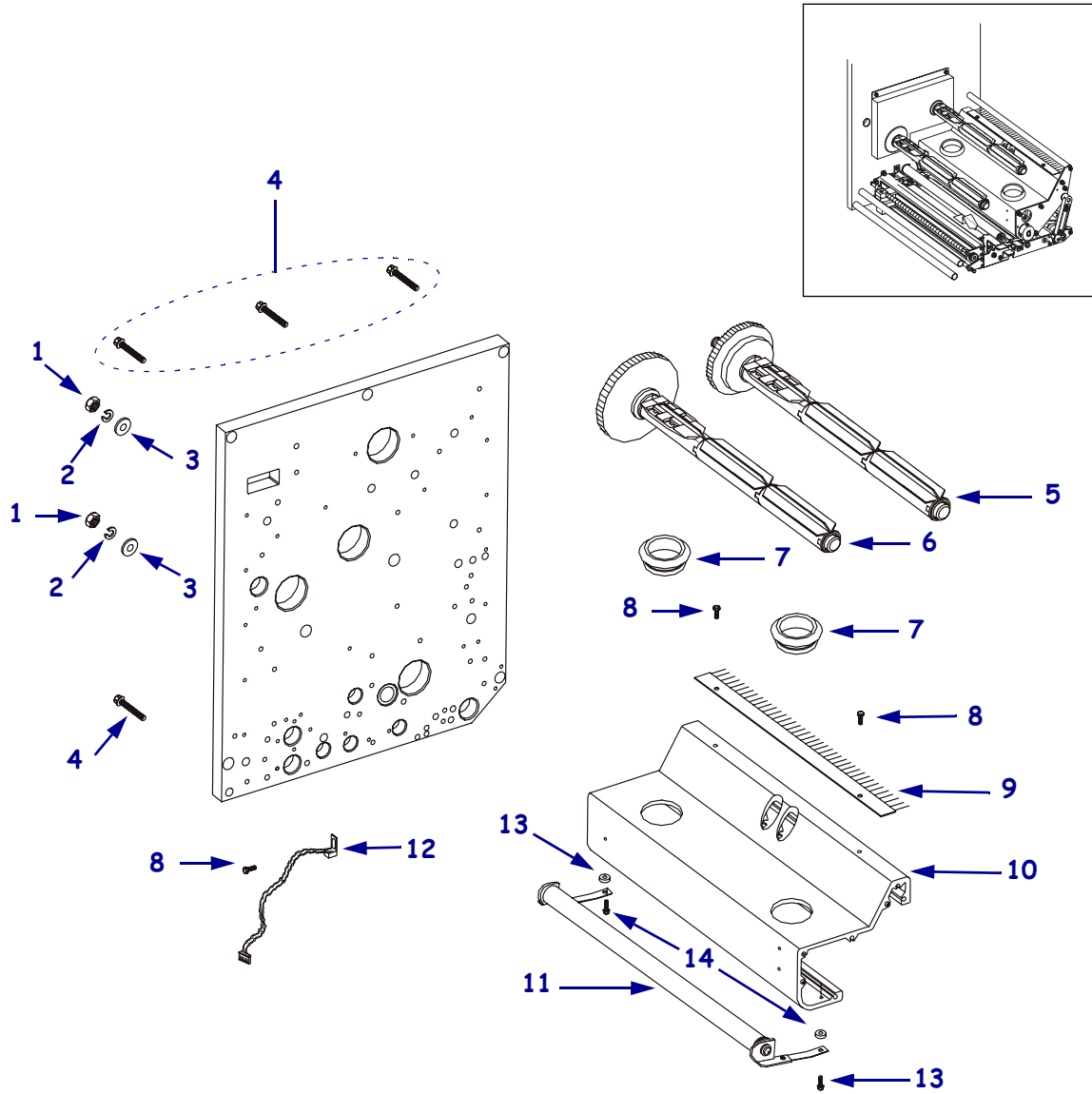
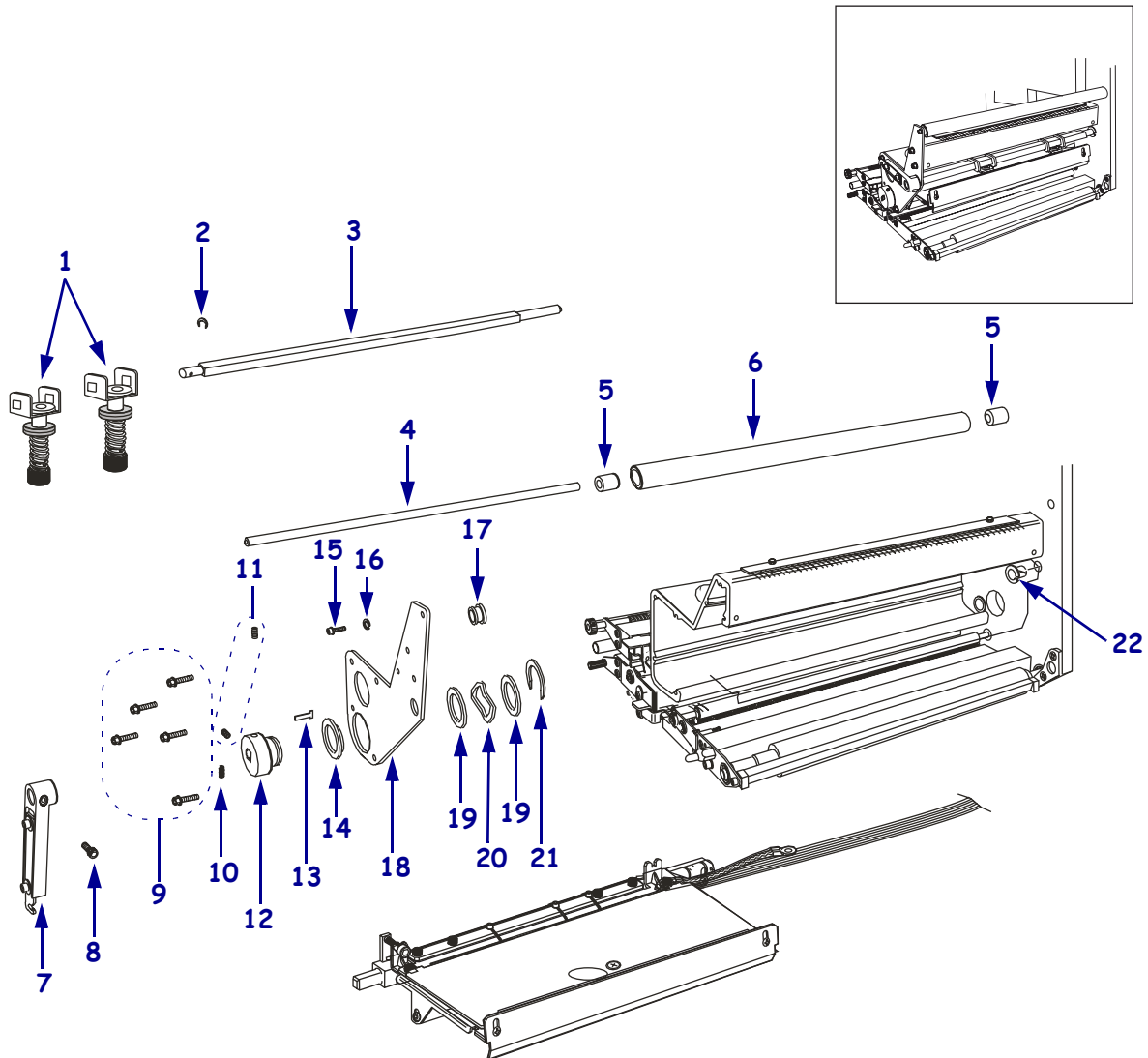


Table 29 • Upper Print Mechanism (Page 2 of 2)

Item	Part Number	Description	Qty.
1	49099M	Printhead Pressure Maintenance Kit	2
2	HW02252	Ring, External Crescent, 0.250 (Qty. of 100)	2
3	46202	Bar, Toggle Pivot	1
4	49211	Shaft, Upper Ribbon Roller	1
5	49215	Bearing, Ribbon Guide Roller	2
6	49213	Roller, Ribbon Guide	1
7	49221M	Locking Lever Maintenance Kit (RH)	1
7	49433M	Locking Lever Maintenance Kit (LH)	1
8	HW10413	Screw, Cap M3 × 0.5 (Qty. of 50)	1
9	HW44001	Screw, Hex, M3 × 0.5 (Qty. of 25)	5
10	HW46166	Spring, Compression (Qty. of 25)	1
11	HW10856	Screw, Set M4 × 0.7 (Qty. of 25)	2
12	57381	Hub, Adjusting (RH)	1
12	57384	Hub, Adjusting (LH)	1
13	49200	Plate, Clamp	1
14	49220	Bearing, Adjustment Hub	1
15	HW49186	Screw, M2 × 0.45 (Qty. of 25)	1
16	HW10471	Washer, Split M3 (Qty. of 50)	1
17	HW30105	Bearing, Nylon (Qty. of 25)	1
18	57495	Plate, Extrusion Cover	1
19	HW49223	Washer, Adjustment Hub (Qty. of 5)	2
20	HW49227	Washer, Adjustment Hub Wave (Qty. of 5)	1
21	HW49228	Ring, External Retaining (Qty. of 25)	1
22	49168	Bearing, Flanged	1
Bold = Part available for purchase			
<i>Italic</i> = Part not available for purchase, listed and shown for reference only			

Figure 175 • Upper Print Mechanism (Page 2 of 2)



Maintenance and Assembly Drawings

General Information

Table 30 • Lower Print Mechanism

Item	Part Number	Description	Qty.
1	HW49180	Screw, M4 × 0.7 (Qty. of 10)	3
2	HW10474	Washer, Split M4 (Qty. of 25)	3
3	HW10413	Screw, Cap M3 × 0.5 (Qty. of 50)	9
4	HW49262	Screw M3 × 0.5 (Qty. of 25)	1
5	HW11427	Screw M4 × 0.7 (Qty. of 25)	2
6	49839	Guide Post	2
7	HW01152	Washer, Flat (Qty. of 100)	2
8	<i>57568</i>	Label Guide Shelf Assembly	1
9	49919M	Peel Roller Maintenance Kit	1
10	HW10432	Screw M4 × 0.7 (Qty. of 25)	1
11	HW10474	Washer, Split M4 (Qty. of 25)	1
12	49931	Platen Roller	1
13	49037	Post, Lock	1
14	49826	Plate, Platen Support	1
15	57357M	Lower Media Sensor Maintenance Kit (RH)	1
15	57359M	Lower Media Sensor Maintenance Kit (LH)	1
16	49004M	Platen Support Maintenance Kit	1
17	49962	Elastomer Peel Roller	1
18	49173	Bar, Peel	1
19	HW49262	Screw M3 × 0.5 (Qty. of 10)	2
20	49224	Plate, Peel Bar Mounting (RH)	1
20	49419	Plate, Peel Bar Mounting (LH)	1
21	49833	Latch, Peel Roller (RH)	1
21	49834	Latch, Peel Roller (LH)	1
22	49836	Spring, Tension Latch (RH)	1
22	49835	Spring, Tension Latch (LH)	1
23	HW10401	Screw, M3 × 0.5 4 Pn Ph Blk (Qty. of 50)	1
24	49821	Bracket, Deflector	1
25	49056	Screw, Lead	1
26	57651M	Upper Media Sensor Maintenance Kit (RH)	1
26	57681M	Upper Media Sensor Maintenance Kit (LH)	1

Bold = Part available for purchase

Italic = Part not available for purchase, listed and shown for reference only

Figure 176 • Lower Print Mechanism

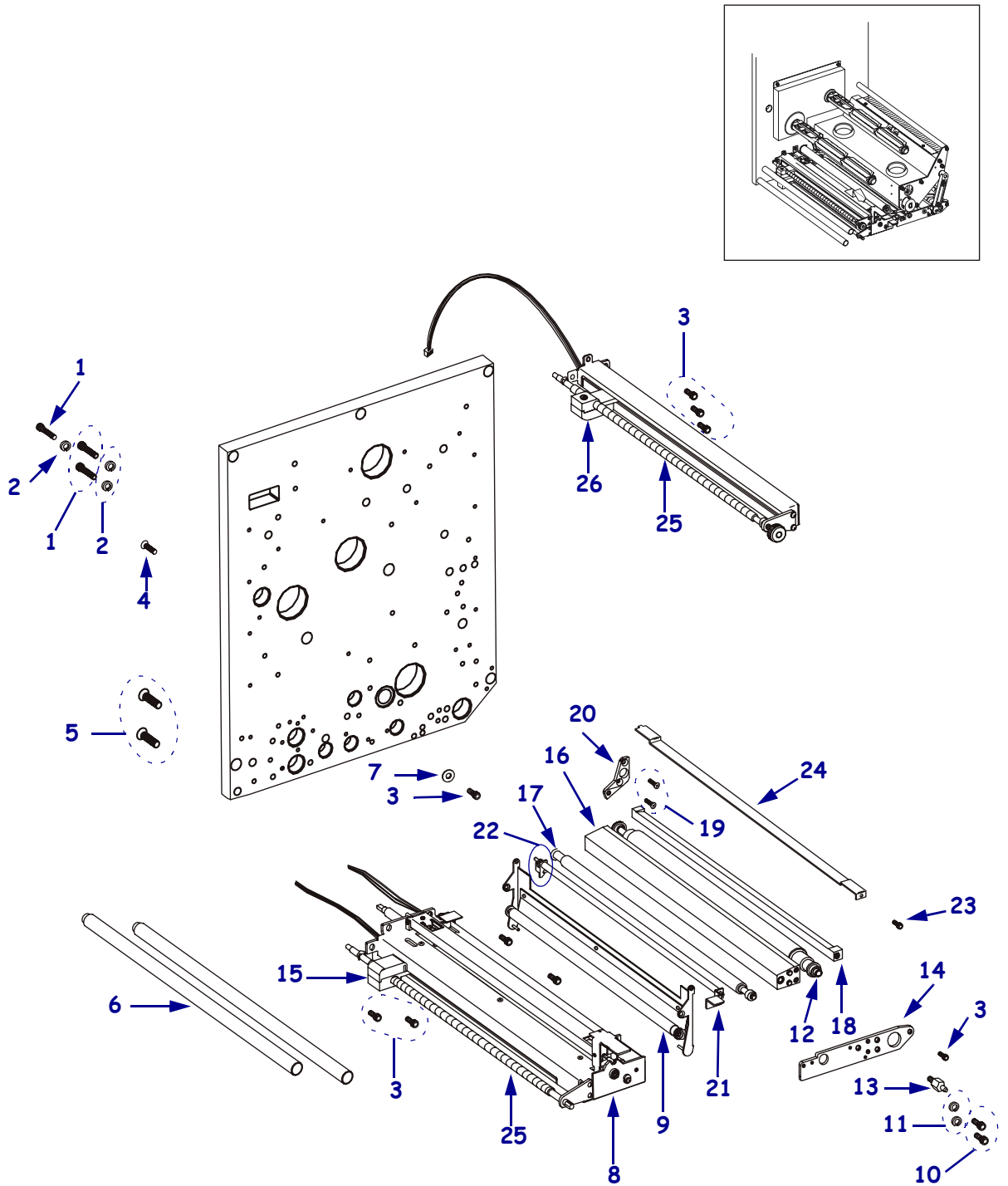


Table 31 • Elastomer Peel Roller

Item	Part Number	Description	Qty.
1	49236	Spacer, Pinch Roller	1
2	49237	Bearing, Ball	1
3	HW02252	Ring, Crescent External (Qty. of 100)	1
4	HW02256	E-Ring, External (Qty. of 100)	1
5	49962	Roller, Elastomer Peel Pinch	1
6	44423	Bearing, Ball	1
<p>Bold = Part available for purchase <i>Italic</i> = Part not available for purchase, listed and shown for reference only</p>			

Figure 177 • Elastomer Peel Roller

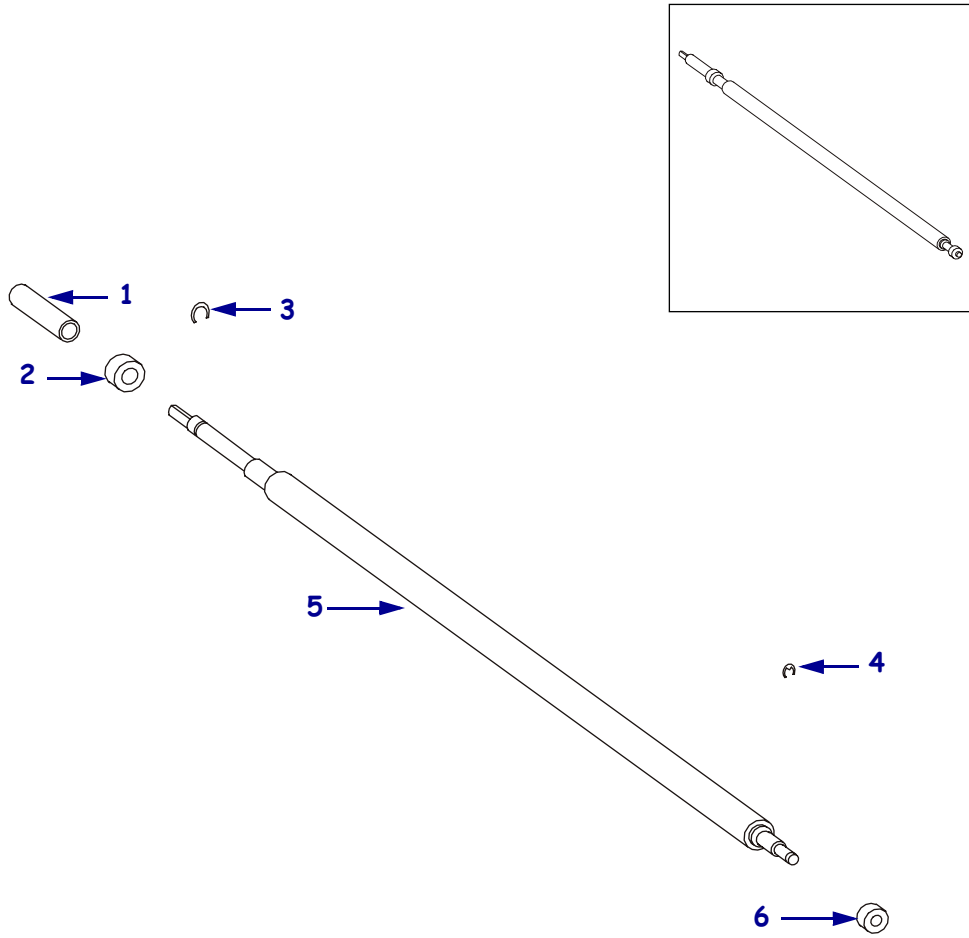


Table 32 • Platen Roller

Item	Part Number	Description	Qty.
1	HW02252	Ring, Crescent External (Qty. of 100)	1
2	49931	Shaft, Platen	1
3	HW30260	Washer, Crescent (Qty. of 25)	2
4	HW30261	Washer, Flat (Qty. of 25)	1
5	49246	Bearing, Ball Flanged	1

Bold = Part available for purchase

Italic = Part not available for purchase, listed and shown for reference only

Figure 178 • Platen Roller

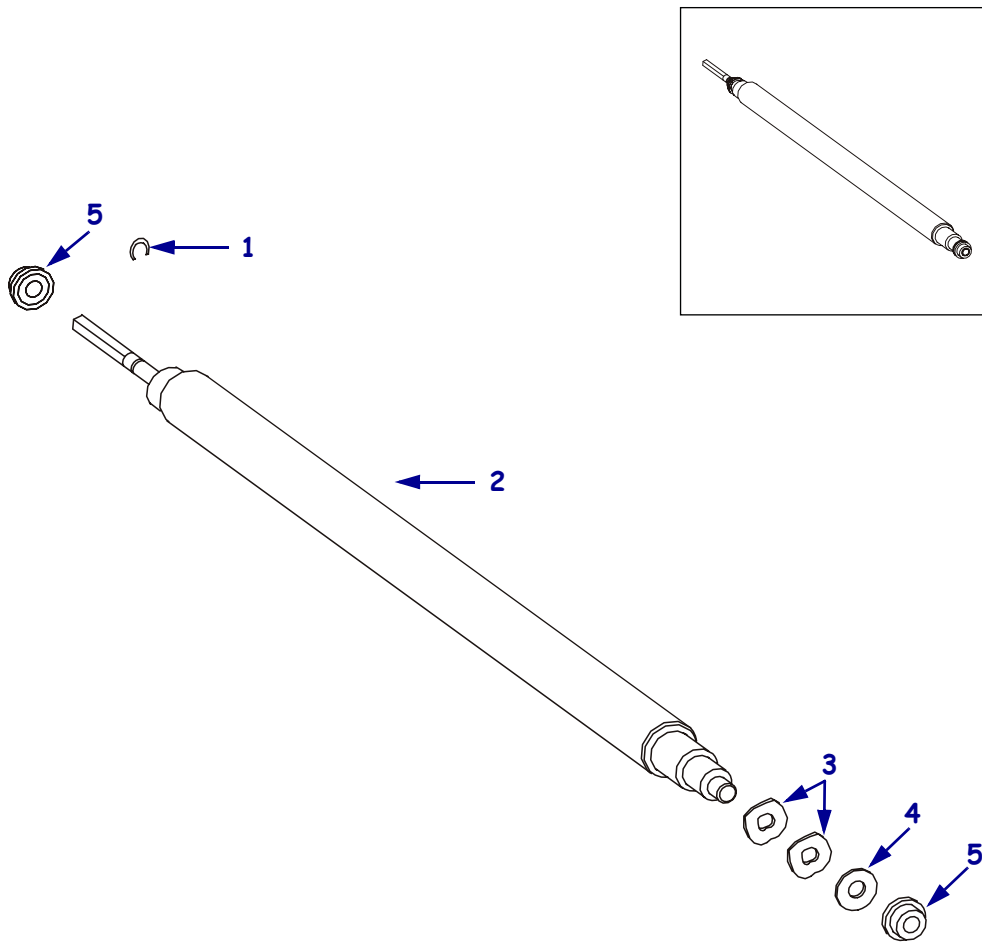


Table 33 • Label Guide Shelf

Item	Part Number	Description	Qty.
1	HW49876	Screw M2.5 × 0.45 (Qty. of 25)	2
2	49116	Spring, Elevating	1
3	49917M	Pressure Roller Segment Maintenance Kit	1
4	HW07309	E-Ring, External (Qty. of 25)	4
5	49709	Pin, Segment Pinch Roller Bracket	2
6	49747	Bracket, Segment Pinch Roller	1
7	49706	Shelf, Label Guide (RH)	1
7	49748	Shelf, Label Guide (LH)	1
8	HW10402	Screw M3 × 0.5 (Qty. of 25)	3
9	<i>67665</i>	Label, Reflective (Included in 49302M kit)	1
10	49302M	Ribbon Out Reflect Maintenance Kit	1
11	77427	Screw, M4 × 0.10	1
12	HW02133	E-Ring, External (Qty. of 50)	2
13	49056	Screw, Lead	1
14	49756	Cover, Media Track Lower (RH)	1
14	49788	Cover, Media Track Lower (LH)	1
15	49733	Guide, Outer Media	1
16	HW46129	Washer, Flat Nylon (Qty. of 25)	1
17	HW46128	Washer, Flat Nylon (Qty. of 25)	1
18	Q10034	Washer (Qty. of 25)	2
19	HW40194	Washer, Curved (Qty. of 25)	3
20	49749	Nut, Outer Media Guide Thumb	1
21	HW44147	Screw, Set (Qty. of 25)	1
22	HW10401	Screw, M3 × 0.5 (Qty. of 50)	2
23	49058	Plate, Sensor Support	1
24	57357M	Lower Media Sensor Maintenance Kit (RH)	1
24	57359M	Lower Media Sensor Maintenance Kit (LH)	1
Bold = Part available for purchase			
<i>Italic</i> = Part not available for purchase, listed and shown for reference only			

Figure 179 • Label Guide Shelf

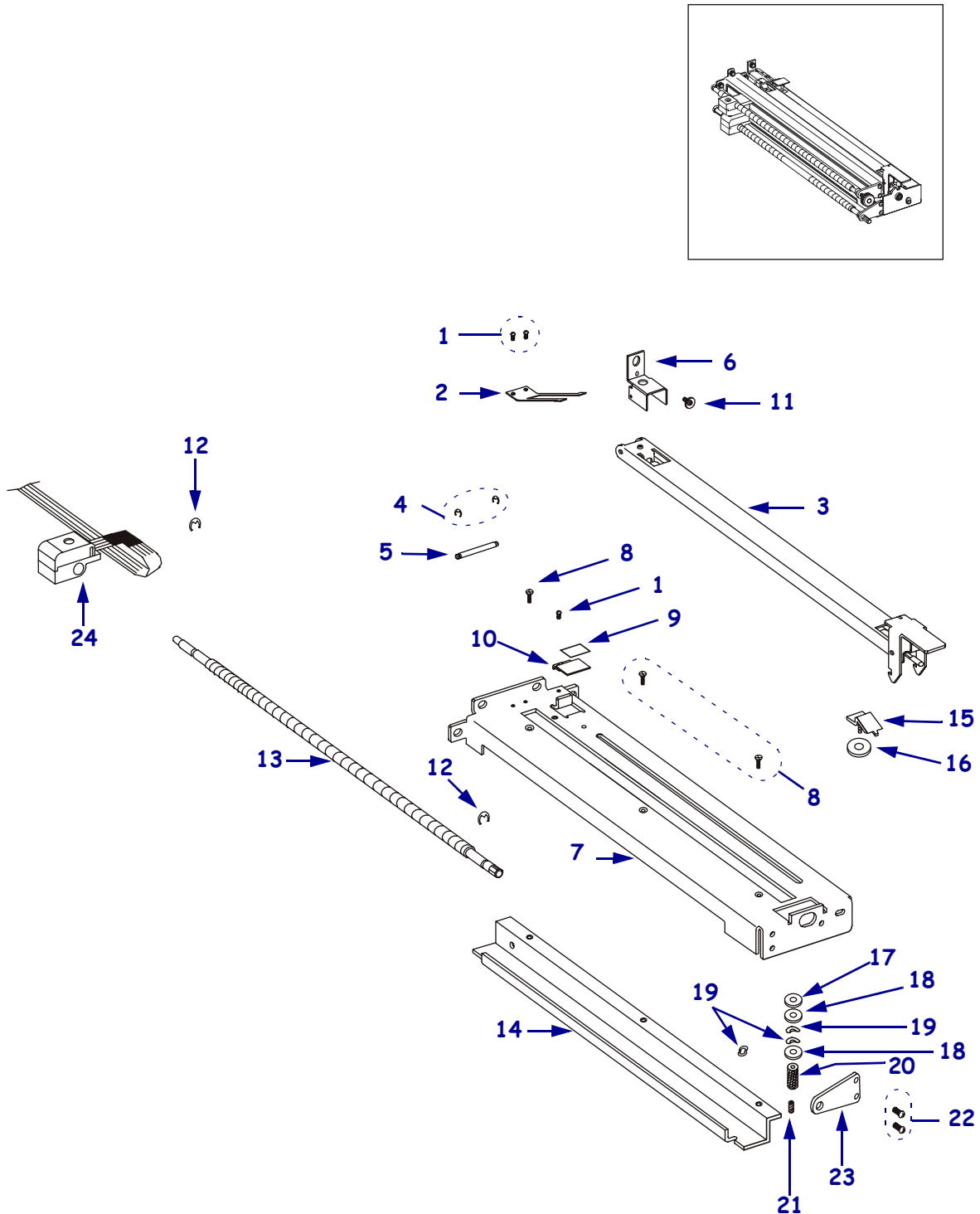


Table 34 • Segment Roller and Lower Media Sensor

Item	Part Number	Description	Qty.
1	49111	Spring, Compression	2
2	49754	Roller, Segment	7
3	HW30485	E-Ring, External (Qty. of 25)	1
4	HW07309	E-Ring, External (Qty. of 25)	4
5	49709	Pin, Segment Pinch Roller Bracket	2
6	49042	Shaft, Segment Roller	1
7	49708	Latch, Segment Pinch Roller	1
8	49707	Roller, Channel Segment Pinch	1
9	49237	Bearing, Ball	1
10	49963	Roller, Elastomer Peel Pinch	1
11	HW02256	E-Ring, External (Qty. of 100)	1
12	44423	Bearing, Ball	1
13	57651M	Upper Media Sensor Maintenance Kit (RH)	1
13	57681M	Upper Media Sensor Maintenance Kit (LH)	1
14	HW10403	Screw M3 × 0.5 (Qty. of 50)	1
15	43613	Cam	1
16	43613	Plate, Cam	1
17	49210	Standoff, PC Board	1
18	<i>57418</i>	Reflector Sensor	1
19	HW10460	Nut, Hex M3 (Qty. of 25)	1

Bold = Part available for purchase

Italic = Part not available for purchase, listed and shown for reference only

Figure 180 • Segment Roller and Lower Media Sensor

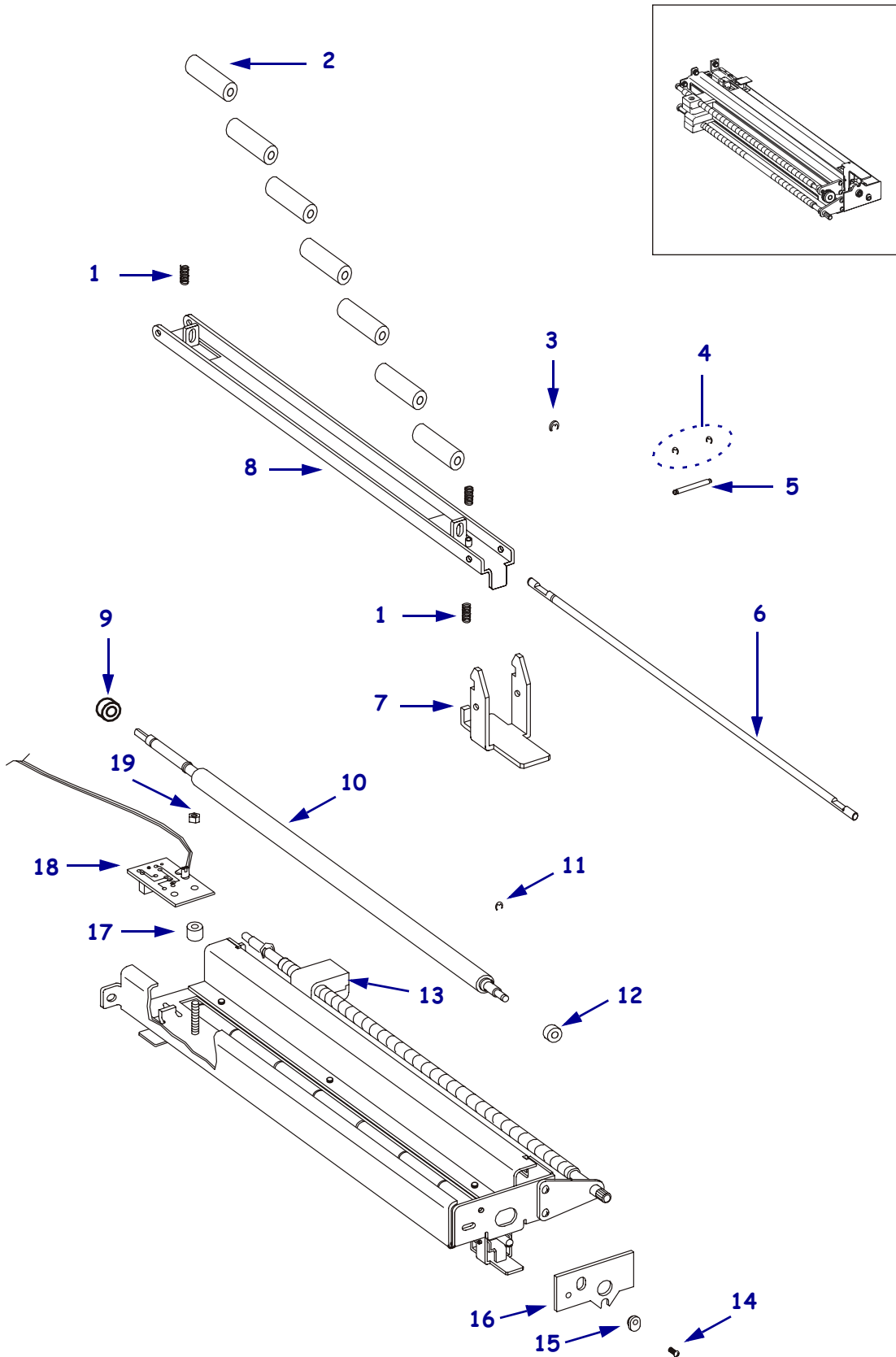


Table 35 • Top Media Sensor Track

Item	Part Number	Description	Qty.
1	57651M	Upper Media Sensor Maintenance Kit (RH)	1
1	57681M	Upper Media Sensor Maintenance Kit (LH)	1
2	HW02133	E-Ring, External (Qty. of 50)	2
3	49056	Screw, Lead	1
4	HW10413	Screw M3 × 0.5 (Qty. of 50)	3
5	49847	Track, Top Sensor (RH)	1
5	49849	Track, Top Sensor (LH)	1
6	HW40194	Washer, Curved (Qty. of 25)	1
7	49058	Plate, Sensor Support	1
8	HW10402	Screw M3 × 0.5 (Qty. of 25)	3
9	49848	Cover, Upper Cable Track (RH)	1
9	49923	Cover, Upper Cable Track (LH)	1
10	HW10401	Screw M3 × 0.5 (Qty. of 50)	2
11	HW44147	Screw, Set M3 (Qty. of 25)	1
12	49209	Knob, Lead Screw	1
13	57357M	Lower Media Sensor Maintenance Kit (RH) (not shown)	1
13	57359M	Lower Media Sensor Maintenance Kit (LH) (not shown)	1

Bold = Part available for purchase
Italic = Part not available for purchase, listed and shown for reference only

Figure 181 • Top Media Sensor Track

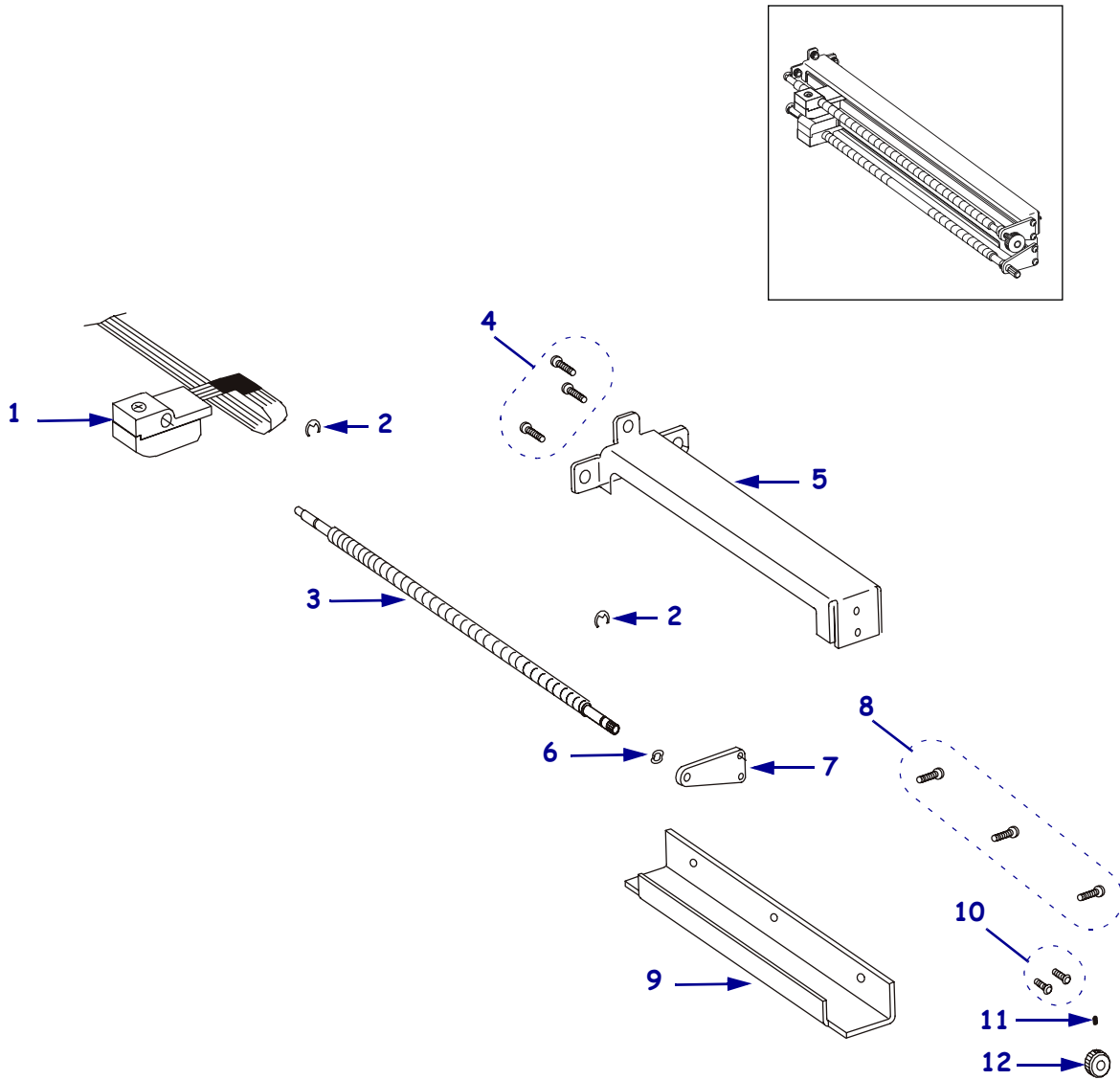
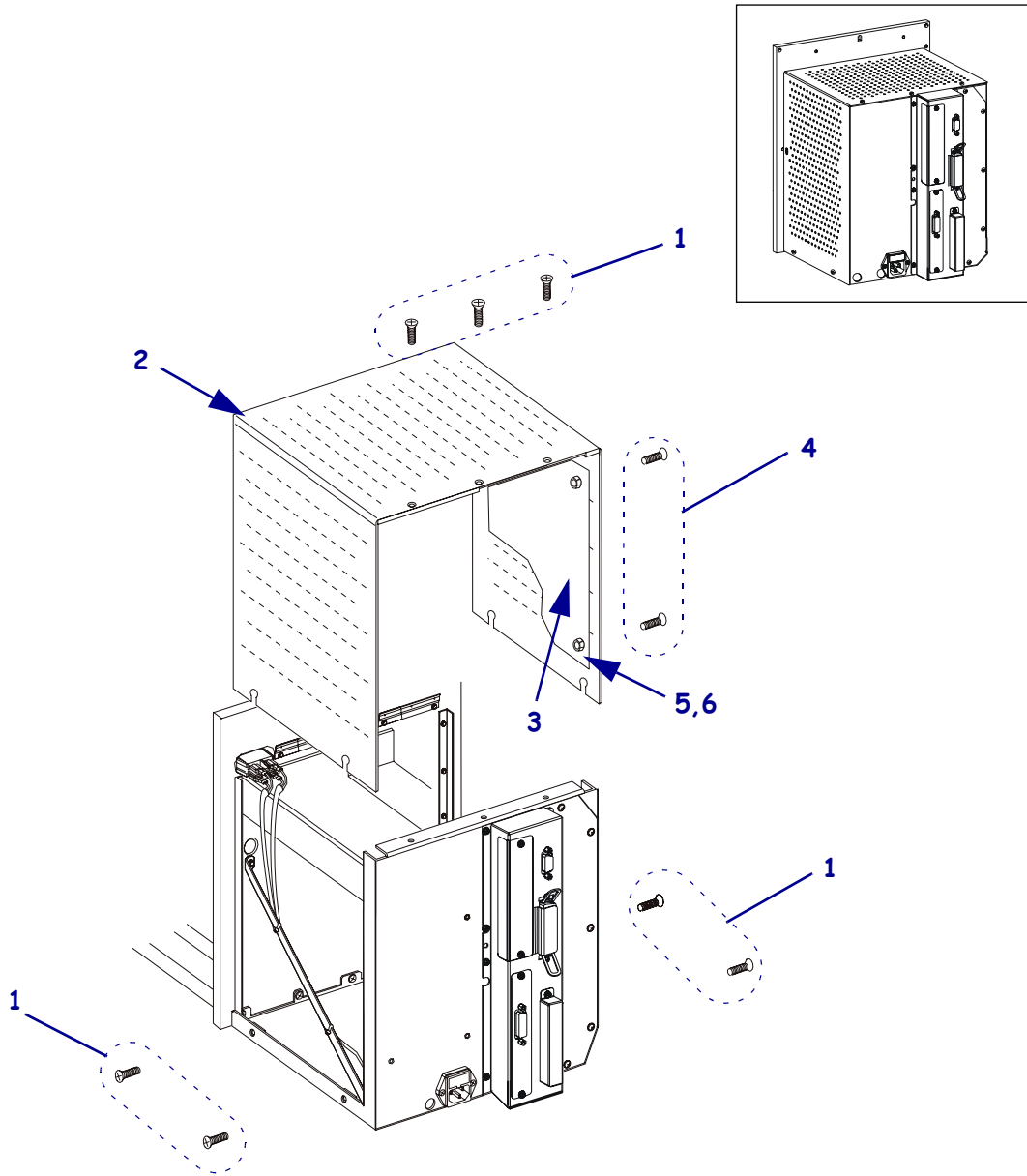


Table 36 • Electronics Enclosure Cover

Item	Part Number	Description	Qty.
1	HW49262	Screw, Flat Head M3 × 0.5	7
2	57393	Cover Enclosure (RH)	1
2	57395	Cover Enclosure (LH)	1
3	<i>57544</i>	Shield, Bottom Electronics Enclosure (RH)	1
3	<i>57545</i>	Shield, Bottom Electronics Enclosure (LH)	1
4	HW10404	Screw, M3 × 0.5 (Qty. of 25)	3
5	HW10470	Washer, Flat M3 (Qty. of 50)	3
6	HW10460	Nut, Hex M3 (Qty. of 25)	3
<p>Bold = Part available for purchase <i>Italic</i> = Part not available for purchase, listed and shown for reference only</p>			

Figure 182 • Electronics Enclosure Cover



Maintenance and Assembly Drawings

General Information

Table 37 • Main Logic Board, Applicator Interface Board, and PCMCIA Board

Item	Part Number	Description	Qty.
1	HW22416	Standoff, Hex 4-40 (Qty. of 25)	4
2	57056M	Application Interface Board Maintenance Kit	1
2	57056M	Application Interface Board Maintenance Kit	1
3	HW10401	Screw, M3 × 0.5 (Qty. of 50)	14
4	49036-2	Cover, PC Board	1
5	49036-1	Cover, PC Board Option (not shown)	1
6	HW07696	Screw, 4-40 (Qty. of 25)	2
7	33112	Cover, Memory Pack	1
8	<i>57486</i>	Panel, PCB Access	1
9	HW49631	Spacer, PCB Plastic (Qty. of 10)	2
10	57392	Enclosure (RH)	1
10	57499	Enclosure (LH)	1
11	57340M	Main Logic Board Maintenance Kit	1
12	57350M	PCMCIA Board Maintenance Kit	1
13	57194	Cover, Print Server 100	1

Bold = Part available for purchase

Italic = Part not available for purchase, listed and shown for reference only

Figure 183 • Main Logic Board, Applicator Interface Board, and PCMCIA Board

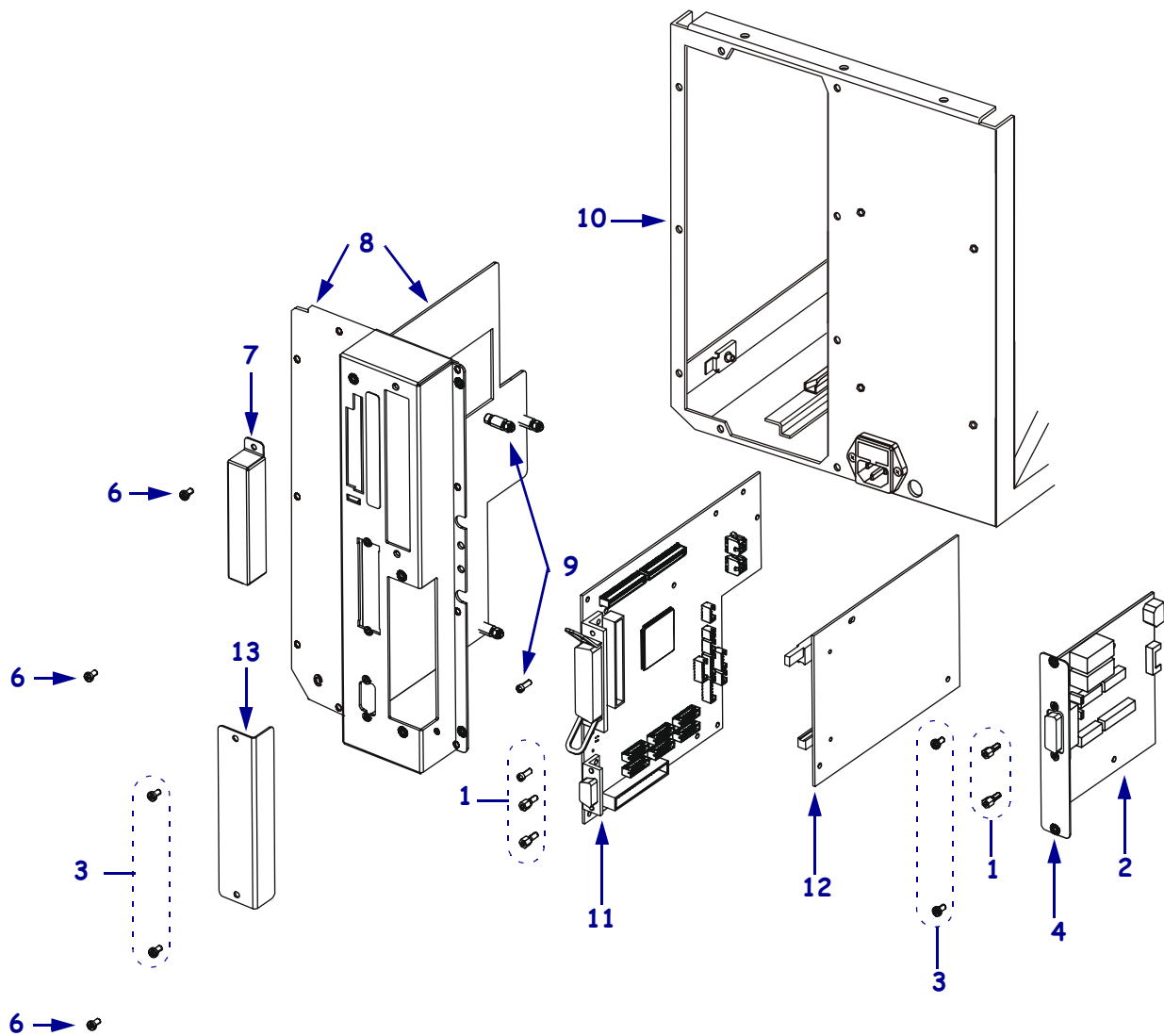
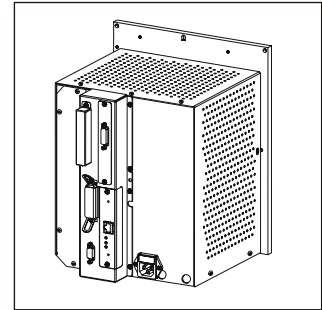


Table 38 • AC and DC Power Supply Boards and Control Panel

Item	Part Number	Description	Qty.
1	49295	Pad, Insulation	1
2	43780M	AC Power Supply Board Maintenance Kit	1
3	57421M	DC Power Supply Maintenance Kit (RH)	1
3	57431M	DC Power Supply Maintenance Kit (LH)	1
4	HW49185	Screw, M3 × 0.5 (Qty. of 10)	2
5	49296	Pad, Insulation	1
6	HW44924	Screw, M3 × 0.5 (Qty. of 25)	6
7	<i>49512</i>	Switch, Rocker, 2 DPST	1
8	49398M	Control Panel Maintenance Kit	1
9	57352M	Cable Harness Maintenance Kit (not shown)	1
10	Q06020	Tie, Cable (not shown)	3

Bold = Part available for purchase

Italic = Part not available for purchase, listed and shown for reference only

Figure 184 • AC and DC Power Supply Boards and Control Panel

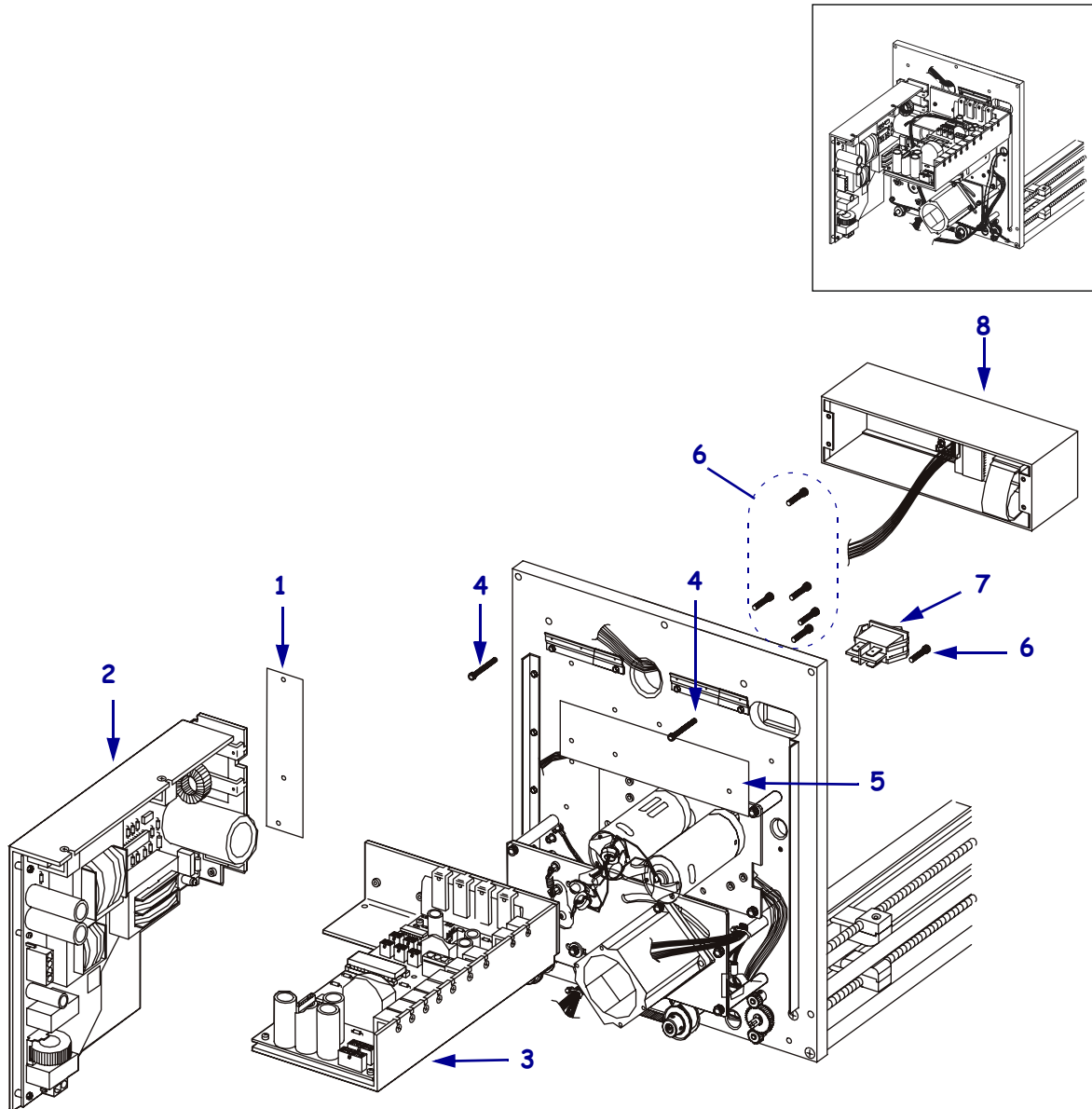


Table 39 • Pulleys and Belts

Item	Part Number	Description	Qty.
1	HW30392-006	Screw, 6-32 (Qty. of 25)	1
2	HW01152	Washer, Flat (Qty. of 100)	1
3	49887	Spring, Idler (RH)	1
3	49889	Spring, Idler (LH)	1
4	HW10413	Screw, M3 × 0.5 (Qty. of 50)	2
5	30265	Pulley, Idler	1
6	30207	Shaft, Idler Pulley	1
7	45189-18	Belt, 0.080P 122T (Stepper Motor Belt)	1
8	40357M	Stepper Motor Pulley Maintenance Kit (203 dpi)	1
9	49857M	Stepper Motor Pulley Maintenance Kit (300 dpi)	1
9	45189-19	Belt, 0.080P 205T (Pinch/Peel Belt)	1
10	49159M	Pulley Roller Maintenance Kit	1
11	49165M	Platen Roller Pulley Maintenance Kit	1
12	49122	Belt, 100T (Platen Belt)	1
<p>Bold = Part available for purchase <i>Italic</i> = Part not available for purchase, listed and shown for reference only</p>			

Figure 185 • Pulleys and Belts

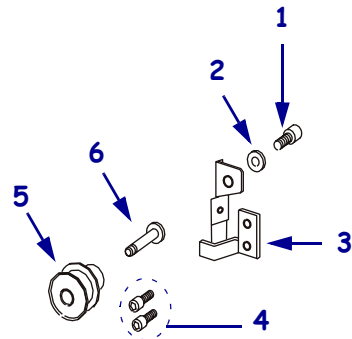
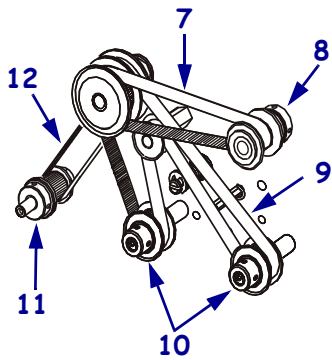
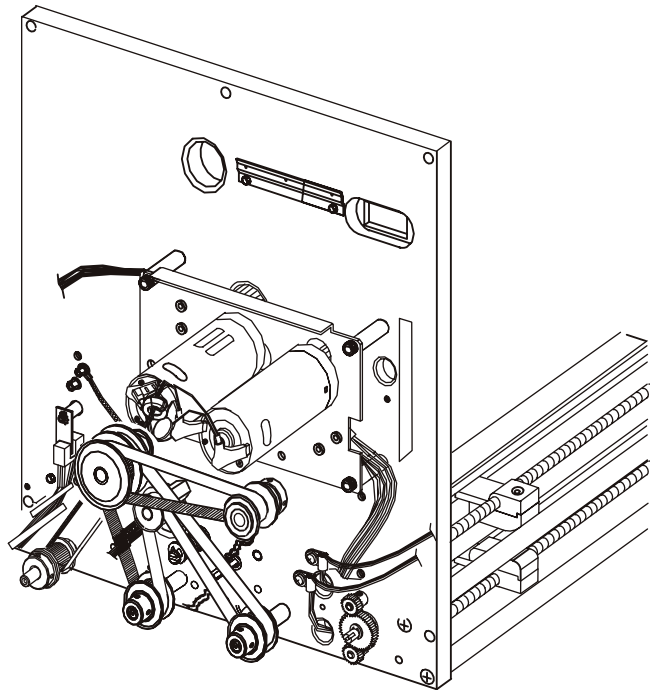
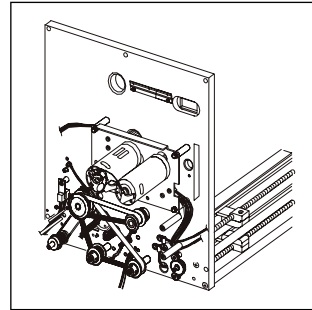


Table 40 • Intermediate Pulley and Stepper Motor

Item	Part Number	Description	Qty.
1	HW02252	Ring, External Crescent (Qty. of 100)	1
2	<i>49814</i>	Flange, Pulley	1
3	43669	Shaft, Intermediate Pulley	1
4	49878M	Intermediate Pulley Base Maintenance Kit (RH)	1
4	49936M	Intermediate Pulley Base Maintenance Kit (LH)	1
5	49258	Stud, Long Spring	1
6	HW49249	Screw, M4 × 0.7 (Qty. of 25)	1
7	49136	Standoff, 0.188 × 0.312 × 0.55	4
8	45189-18	Belt, 0.080P 122T (Stepper Motor Belt)	1
9	49137	Nut, Pulley Adjustment	3
10	49133	Nut, Stepper Motor	1
11	49879	Bracket, Stepper Motor (RH)	1
11	49937	Bracket, Stepper Motor (LH)	1
12	49134	Spacer, Motor	1
13	HW49350	Screw, M4 × 0.7 (Qty. of 5)	4
14	40357M	Stepper Motor Pulley Maintenance Kit (203 dpi)	1
14	49857M	Stepper Motor Pulley Maintenance Kit (300 dpi)	1
15	57341M	Stepper Motor Maintenance Kit	1
16	HW10432	Screw, M4 × 0.7 (Qty. of 25)	2
17	HW49881	Screw, M4 × 0.7 (Qty. of 25)	3
18	HW30208	Washer, Flat (Qty. of 25)	3
19	49391	Spring, Extension	1
20	49257	Stud, Short Spring	1

Bold = Part available for purchase

Italic = Part not available for purchase, listed and shown for reference only

Figure 186 • Intermediate Pulley and Stepper Motor

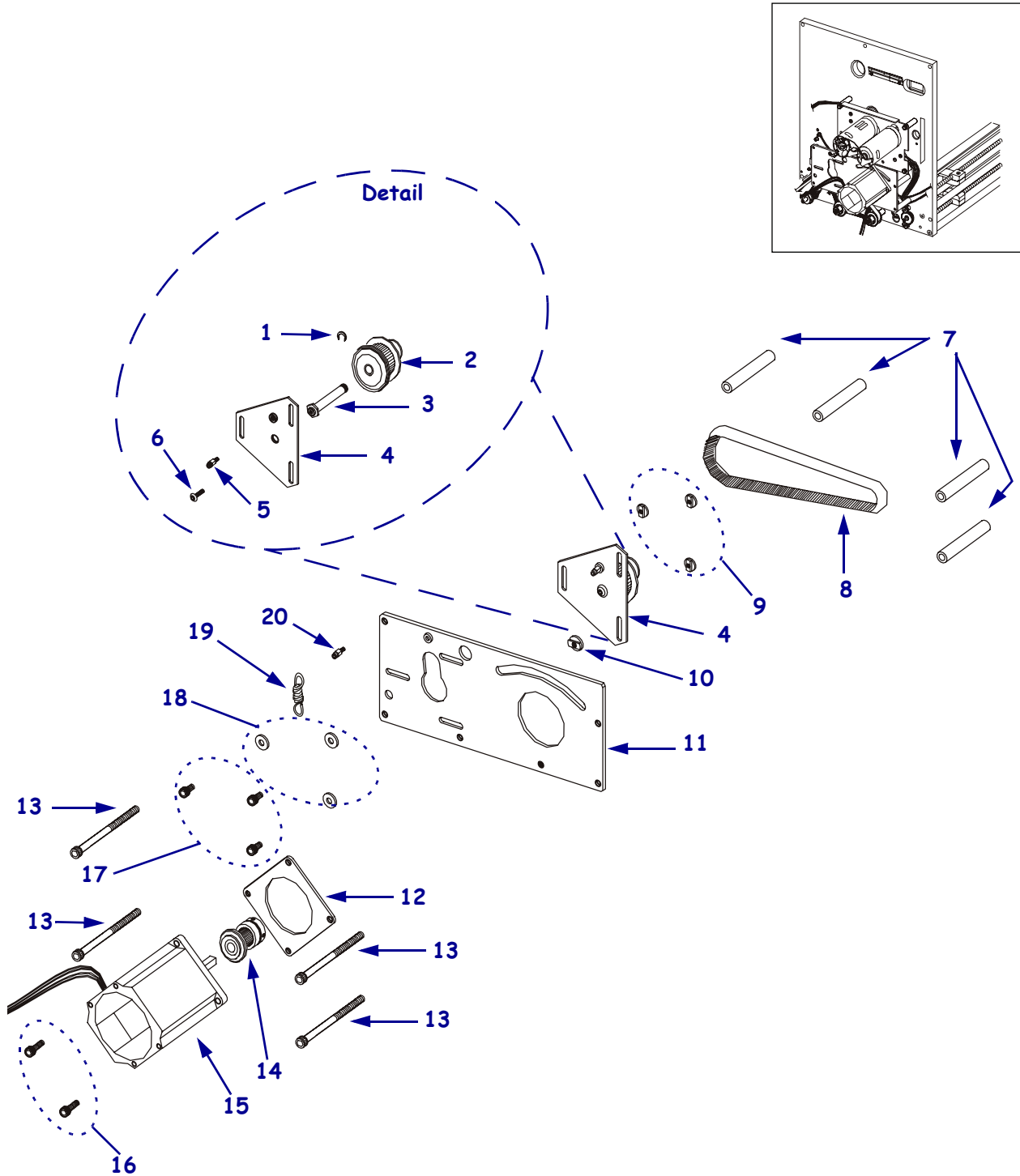


Table 41 • Gears and Pulleys

Item	Part Number	Description	Qty.
1	49011	Track, Enclosure Top	1
2	HW06250	E-Ring, External (Qty. of 25)	2
3	HW49356	Standoff (Qty. of 10)	4
4	HW02324	Clamp, Cable (Qty. of 25)	3
5	HW02133	E-Ring (Qty. of 50)	1
6	49100	Shaft, Idler	1
7	HW44147	Screw, Set M3 (Qty. of 25)	8
8	49361	Gear, 22T 48P 20PA	2
9	49054	Gear, 36T 48P 20PA	1
10	HW10405	Screw, M3 × 0.5 (Qty. of 25)	3
11	HW30266	Stop, Head Lift Spring	1
12	49159M	Pulley Roller Maintenance Kit	1
13	49165M	Platen Roller Pulley Maintenance Kit	1
14	HW10413	Screw, M3 × 0.5 × 6 (Qty. of 50)	2
15	49645	Printhead Open Sensor	1
16	46203	Shield Trimount	1
17	HW10470	Washer, Flat M3 (Qty. of 50)	2
18	46352M	Flag Maintenance Kit	1
19	HW01152	Washer, Flat (Qty. of 100)	3
20	49370	Spring, Torsion (RH)	1
20	49413	Spring, Torsion (LH)	1
21	HW49152	Screw, M3 × 0.6 (Qty. of 25)	1
22	49197	Screw, M3 × 0.5	2
23	Q06020	Tie, Cable (not shown)	3
<p>Bold = Part available for purchase <i>Italic</i> = Part not available for purchase, listed and shown for reference only</p>			

Figure 187 • Gears and Pulleys

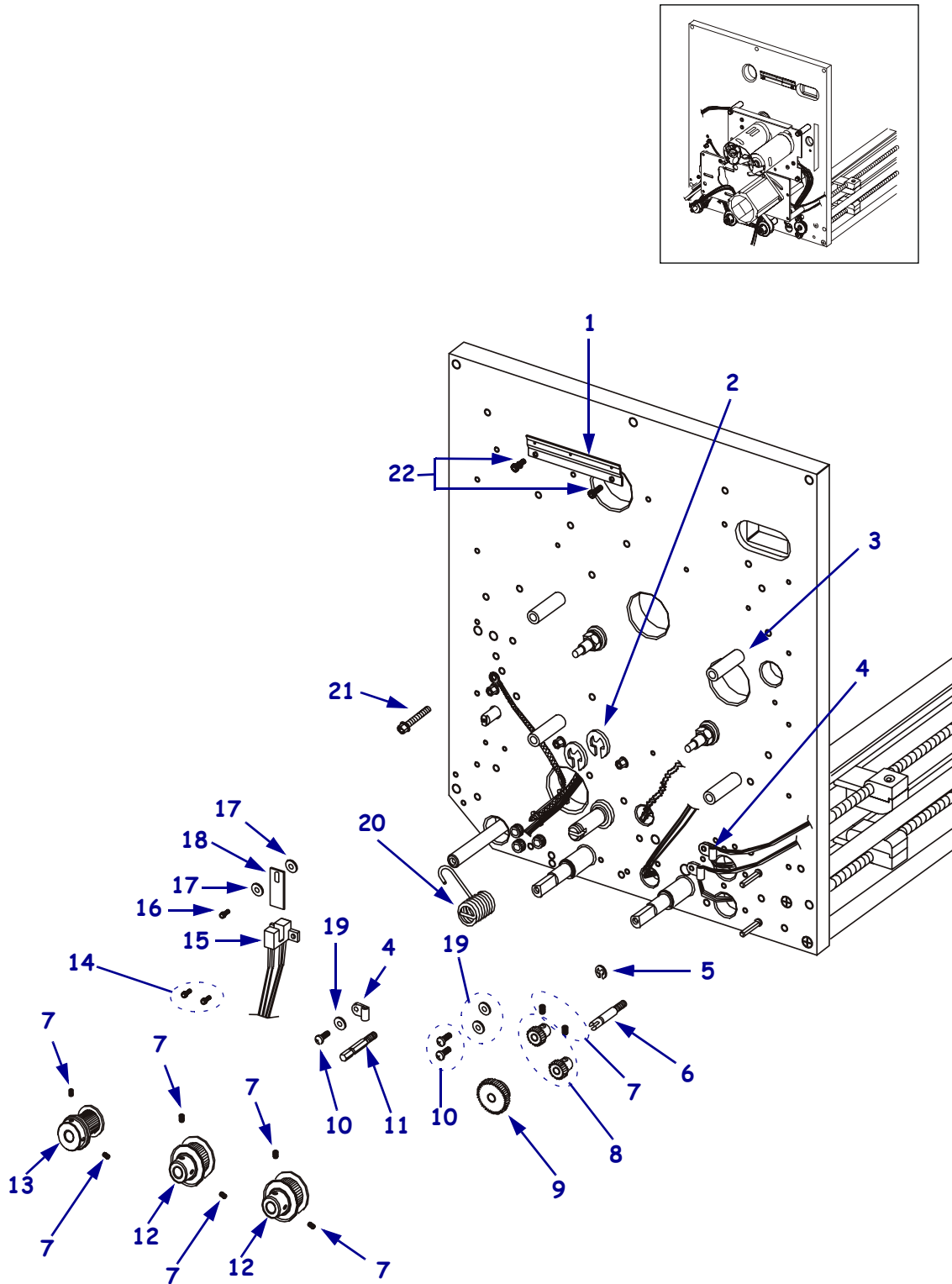


Table 42 • Ribbon Supply and Ribbon Take-Up Gears and DC Motors

Item	Part Number	Description	Qty.
1	49310M	Ribbon Take-Up DC Motor Maintenance Kit	1
2	49239M	Ribbon Supply DC Motor Maintenance Kit	1
3	49311	Spacer, DC Motor	1
4	49320	DC Motor Bracket Assembly (RH)	1
4	49425	DC Motor Bracket Assembly (LH)	1
5	49078	Sensor, Opto	4
6	49648	Encoder, Sensor	2
7	HW49351	Screw, M2.5 × 0.45 (Qty. of 25)	4
8	49147	Gear, 25T 32P 20PA	2
9	HW49195	Ring, Retaining (Qty. of 10)	2
10	HW44924	Screw, M3 × 0.5 (Qty. of 25)	4
11	49649	Cable, Motor	2
12	HW49230	Screw, M4 × 0.7 (Qty. of 25)	4
<p>Bold = Part available for purchase <i>Italic</i> = Part not available for purchase, listed and shown for reference only</p>			

Figure 188 • Ribbon Supply and Ribbon Take-Up Gears and DC Motors

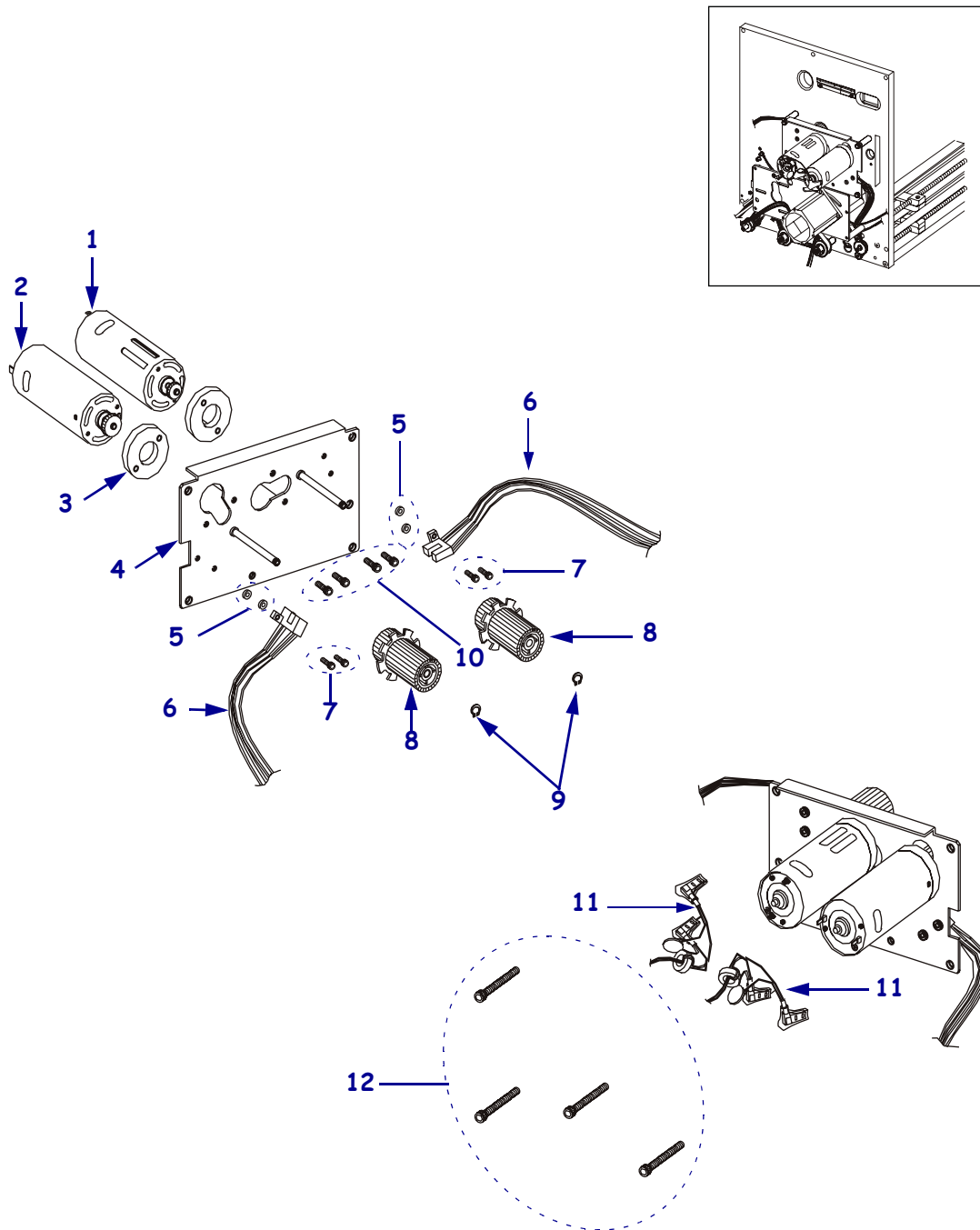


Table 43 • Power Entry and Ribbon Tension Control Board

Item	Part Number	Description	Qty.
1	49600-012	Cable, SP Communication	1
2	49718-019	Cable, FSTN	1
3	57352M	Cable Harness Maintenance Kit	1
4	57392	Enclosure (RH)	1
4	57499	Enclosure (LH)	1
5	HW49262	Screw, M3 × 0.5 (Qty. of 25)	2
6	<i>49673</i>	Power Plug with Ground and Fuse	1
7	HW01152	Washer, Flat (Qty. of 100)	1
8	HW10413	Screw, M3 × 0.5 (Qty. of 50)	4
9	57310M	Ribbon Tension Control Board Maintenance Kit	1
10	HW06576	Guide, PC Board (Qty. of 10)	1
11	49293	Support, Enclosure Base (RH)	1
11	49423	Support, Enclosure Base (LH)	1
12	HW10460	Nut, Hex M3 (Qty. of 25)	4
13	HW10404	Screw, M3 × 0.5 (Qty. of 25)	1
14	HW01159	Washer, Lock External (Qty. of 100)	1
15	HW10474	Washer, Split M4 (Qty. of 25)	1
16	HW49180	Screw, M4 × 0.7 (Qty. of 10)	1
17	HW49196	Screw, M4 × 0.7 (Qty. of 25)	4
18	HW10413	Screw, M3 × 0.5 (Qty. of 50)	1
19	Q06020	Tie, Cable (not shown)	2

Bold = Part available for purchase

Italic = Part not available for purchase, listed and shown for reference only

Figure 189 • Power Entry and Ribbon Tension Control Board

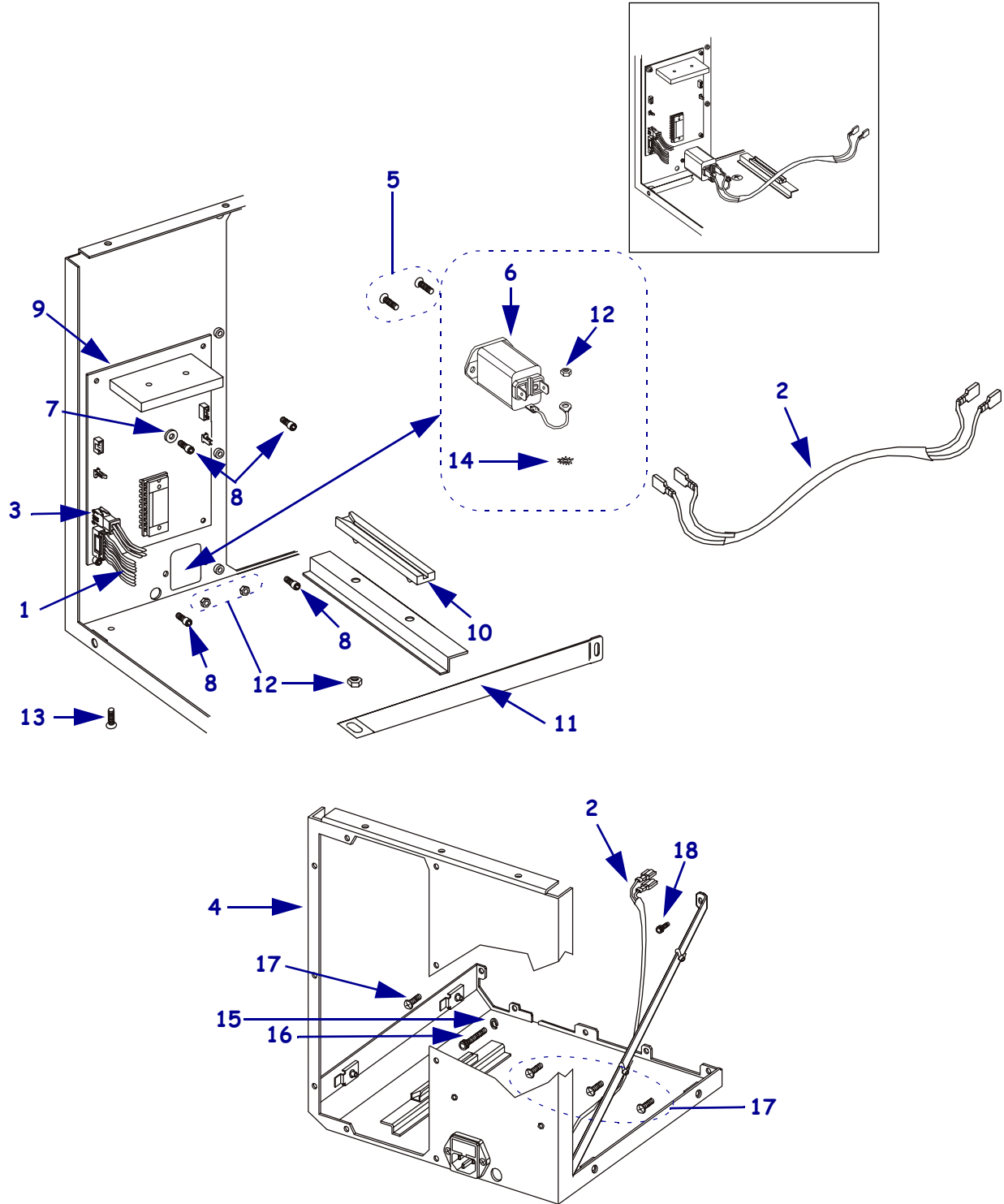


Table 44 • Cable Harnesses

Item	Part Number	Description	Qty.
1	57352M	Cable Harness Maintenance Kit (RH)	1
2	57427M	Cable Harness Maintenance Kit (LH)	1
3	<i>N/A</i>	Main Logic Board, 8-Position SPI	
4	<i>N/A</i>	DC Power Supply, J5-J10	
5	<i>N/A</i>	AC Power Supply, J1	
6	<i>N/A</i>	Main Logic Board, 4-Pin Connector, P27	
7	<i>N/A</i>	Applicator Interface Board, 6-Pin Connector, P27 (RH only)	
8	<i>N/A</i>	Control Panel, 10-Position SPI	
9	<i>N/A</i>	DC Power Supply, J5-J10	
10	<i>N/A</i>	DC Power Supply, J1	
11	<i>N/A</i>	DC Power Supply, J5-J10	
12	<i>N/A</i>	Ribbon Control Board, 4-Pin Connector, J3 (LH only)	
<p>Bold = Part available for purchase <i>Italic</i> = Part not available for purchase, listed and shown for reference only</p>			

Figure 190 • Cable Harnesses

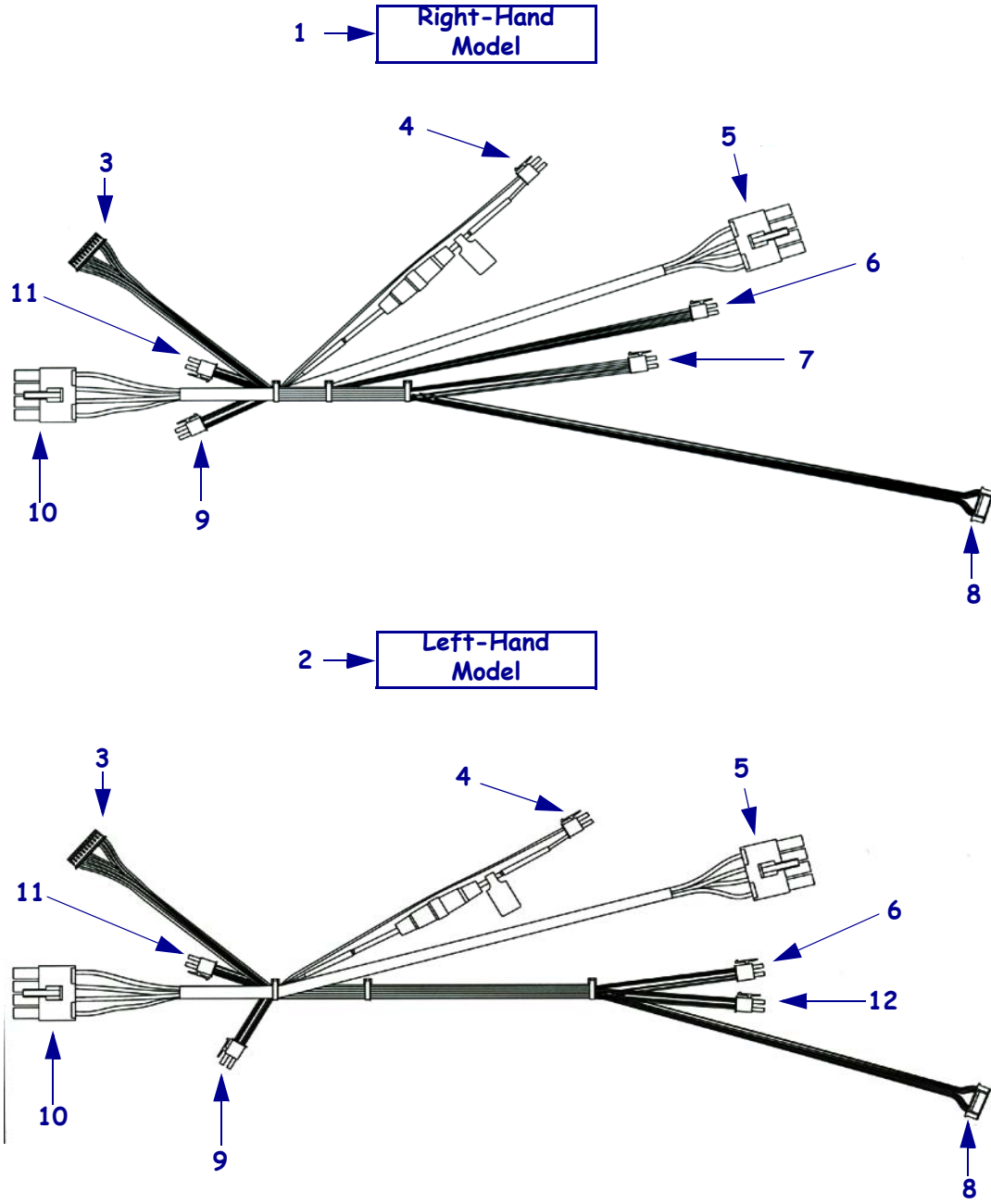


Table 45 • Cables

Item	Part Number	Description	Qty.
1	57056M	Applicator Interface Board Maintenance Kit (5V)	1
1	57389M	Applicator Interface Board Maintenance Kit (24V)	1
2	49604-010	Cable, Power Distribution (LH)	1
2	49604-012	Cable, Power Distribution (RH)	1
3	57355M	Door-Open Switch Maintenance Kit	1
4	46665M	Ribbon Sensor Maintenance Kit	1
5	49645	Sensor, Printhead Open	1
6	49652M	Reflective Sensor Maintenance Kit	1
7	57350M	PCMCIA Board Maintenance Kit	1
8	57357M	Lower Media Sensor Maintenance Kit (RH)	1
8	57359M	Lower Media Sensor Maintenance Kit (LH)	1
9	57360	Cable, Printhead Data	1
10	57651M	Upper Media Sensor Maintenance Kit (RH)	1
10	57681M	Upper Media Sensor Maintenance Kit (LH)	1

Bold = Part available for purchase

Italic = Part not available for purchase, listed and shown for reference only

Figure 191 • Cables

