



HP LaserJet 500-sheet Feeder and Tray

Brand : HP

Product family: LaserJet

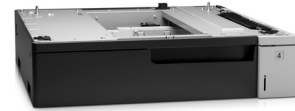
Product code: CF239A



Product name : LaserJet 500-sheet Feeder and Tray

LaserJet 500-sheet Feeder and Tray

[HP LaserJet 500-sheet Feeder and Tray:](#)



HP LaserJet 500-sheet Feeder and Tray. Compatibility: HP LaserJet Enterprise 700, M712, Maximum capacity: 500 sheets, HP segment: Business. Width: 543 mm, Depth: 586 mm, Height: 128 mm. Package width: 718 mm, Package depth: 702 mm, Package height: 280 mm. Dimensions (WxDxH): 543 x 586 x 128 mm

Features		Packaging data	
Compatibility *	HP LaserJet Enterprise 700, M712	Package height	280 mm
Maximum capacity	500 sheets	Package weight	14 kg
HP segment	Business	Brand-specific features	
Weight & dimensions		HP GTIN (EAN/UPC)	887111017604
Width	543 mm	Technical details	
Depth	586 mm	Master (outer) cases per pallet layer 1 pc(s)	
Height	128 mm	Logistics data	
Weight	11.4 kg	Harmonized System (HS) code	84439990
Packaging data		Other features	
Package width	718 mm	Dimensions (WxDxH) 543 x 586 x 128 mm	
Package depth	702 mm		



0887111017604



887111017604



5054533210530

Disclaimer. The information published here (the "Information") is based on sources that can be considered reliable, typically the manufacturer, but this Information is provided "AS IS" and without guarantee of correctness or completeness. The Information is only indicative and can be changed at any time without notification. No rights can be based on the Information. Suppliers or aggregators of this Information do not accept any liability with regard to the content of (web)pages and other documents, including its Information. The publisher of the Information can not be held liable for the content of 3rd party websites that are linking this Information or are linked to from this Information. You as the User of the Information are solely responsible for the choice and usage of this Information. You are not entitled to transfer, copy or otherwise multiply or distribute the Information. You are obliged to follow the directions of the copyright owner(s) with regard to the use of the Information. Exclusively Dutch law is applicable. With regard to price and stock data on the site, the publisher followed a number of starting points, which are not necessarily relevant for your private or business circumstances. Therefore, the price and stock data are only indicative and are subject to changes. You are personally responsible for the way you use and apply this information. As a user of the Information or sites or documents in which this Information is included, you will adhere to standard fair use including avoidance of spamming, ripping, intellectual-property violations, privacy violations, and any other illegal activity.