



Product 539816



539816 Holder with lock. Passive holder with tilt swivel. 2 keys included.

This holder is to be used when you want to secure your Surface Pro 4 and still have it easy accessible.

The holder is also perfect for use in stores, at exhibitions and any place where you want to use your Surface Pro 4 without having it easy removable. The holder is made of extra strong plastic and is equipped with a lock. In order to remove the Surface Pro 4 from the holder you need the key, two keys are included. The holder is mounted onto a tilt swivel. This mean that you can adjust the angle in order to avoid light reflection on the screen. You can easily switch between portrait and landscape mode by turning the holder into desired position.

Tablets (Surfpads) should not be installed onto a car's dashboard if they block the view or block key controls. ProClip (Brodit's vehicle mounting bracket) is designed for installation of smaller devices like mobile phones and GPS devices, ProClip is not designed for large devices like tablets. In some vehicles the ProClip has an extra firm fit and can then be used also for installation of a tablet. If you want to place a tablet onto the car's dashboard, each combination of tablet-car must be examined in detail by you in order to determine if such an installation is possible in the specific case. Consideration should be given to the position and how firmly the ProClip is in place, as well as the size of the tablet you wish to use. Brodit will not give any recommendations for such installations.

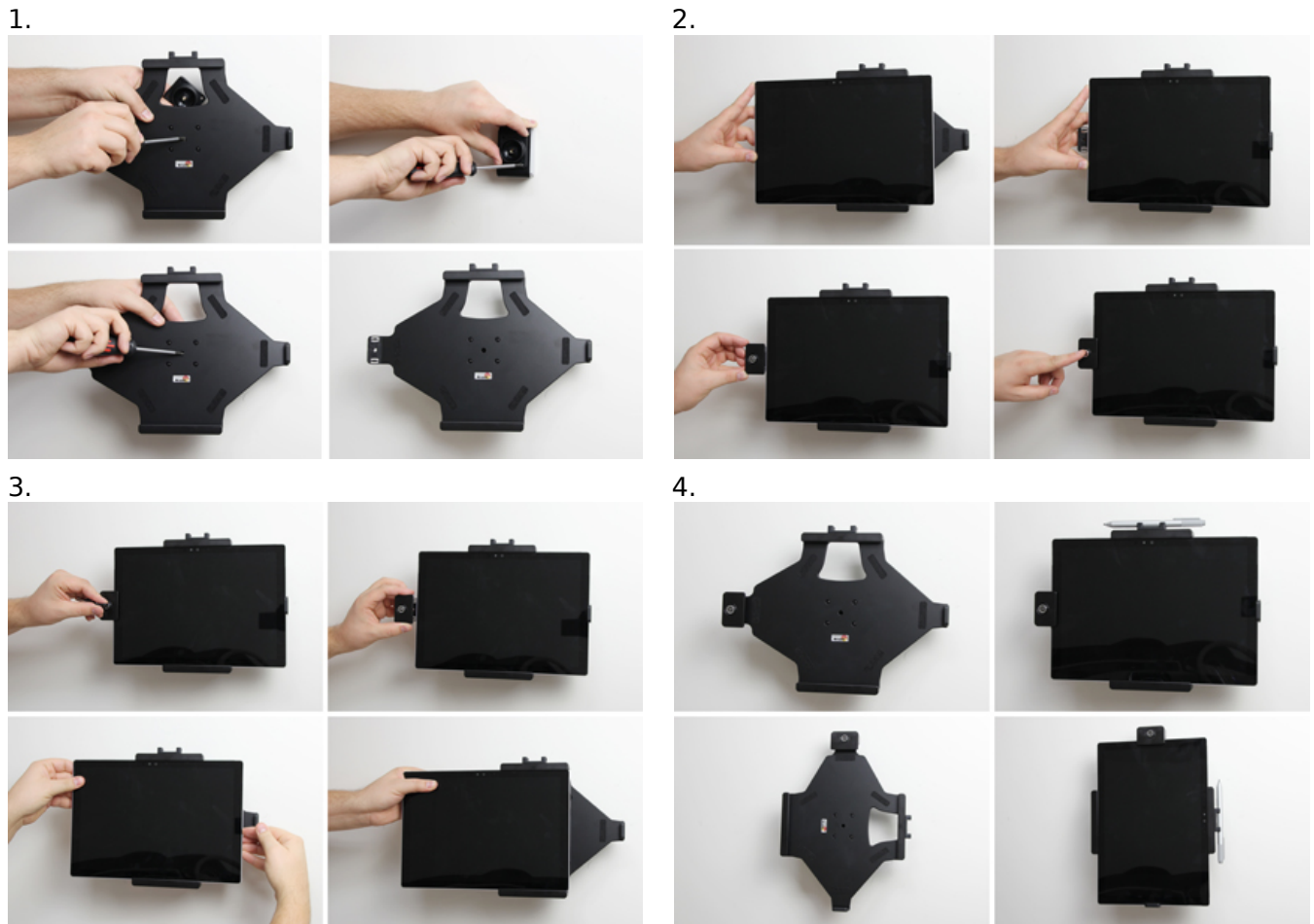
An installation of a tablet onto a vehicle's dashboard is always done on the customer's own responsibility. Brodit recommends to use tablets on the car's headrest, installed onto a Brodit headrest mount.

EAN: 7320285398160

Item no 539816 fits:

Microsoft Surface Pro 4 (For all countries)

INSTALLATION INSTRUCTIONS



Please read all of the instructions and look at the pictures before attaching the holder.

1. Loosen the screw in the center of the holder so you can remove the tilt swivel attaching plate on the back. Place the attaching plate onto the desired position. Screw the attaching plate into place with the enclosed screws. Place the holder over the attaching plate so the screw fits in the hole in the tilt swivel. Screw the holder onto the attaching plate. Tighten the screw so the holder is firmly in place, but still can be adjusted.

2. Slide the device sideways carefully into the holder. Press the lock sideways onto the left part of the holder. Press the button to lock.

3. Use the enclosed key to open the lock. Remove the lock by sliding it sideways away from the holder. Slide the device sideways carefully out of the holder.

4. The holder is in place. Switch between portrait and landscape mode by turning the holder into desired position.