



Product 521940



521940 Active holder with USB-cable Adjustable holder. Micro USB. USB-cable with cig-plug adapter. With tilt swivel and fly lead. Fits devices with or without skin/case, with height 120-150 mm, max thickness 25 mm.

This holder is crash tested and approved for use with device without skin/case on Brodit's headrest mount.

Measure your device/skin/case and compare with specifications. For devices with/without skin/case with height 120-150 mm, max thickness 25 mm. For use with devices with Micro USB connector.

For connection to USB outlet or 12/24V socket. With fly lead, you manually connect the charging cable to the device when needed (not automatic charging when placed in holder). With tilt swivel. Tilts 20°, swivels 360°. Padded cushions for protection against sliding/scratching. Mounting plate 42x50 mm, predrilled AMPS-holes +2x3,5 mm centered holes. Made of high grade black ABS/Acetal plastic. Made in Sweden

Dimensions holder : 145 x 129 x 69 mm (W x H x D mm)

Weight: 217 g

Cable length: Total length: 155 cm (Cable: 145 cm + cig-plug adapter: 58 mm.)

Crash tested:

This adjustable holder is crash tested according to standard for car seats (ECE R17). The crash test applies for a tablet that weighs 490 g. The tests have been performed on one seat with invisible headrest pins (type Volvo etc.) and one seat with visible headrest pins (type Ford etc.) in the forward and rearward directions. The adjustable holder keeps the tablet in place during all executed tests.

Important information:

Tablets should not be installed onto a car's dashboard. They may block the view or key controls and the ProClip is designed for installation of smaller devices (phones), not for large devices (tablets). Brodit will not give any recommendations for such installations. An installation of a tablet onto a vehicle's dashboard is always done on the customer's own responsibility. Brodit recommends to use tablets in a holder on the car's headrest, installed onto a Brodit headrest mount.

Note:

To transmit audio files from a device through the USB cable, this feature must be supported in the stereo. Test your stereo by connecting your device with the USB/charging cable that comes with your device. Charging through USB works regardless.

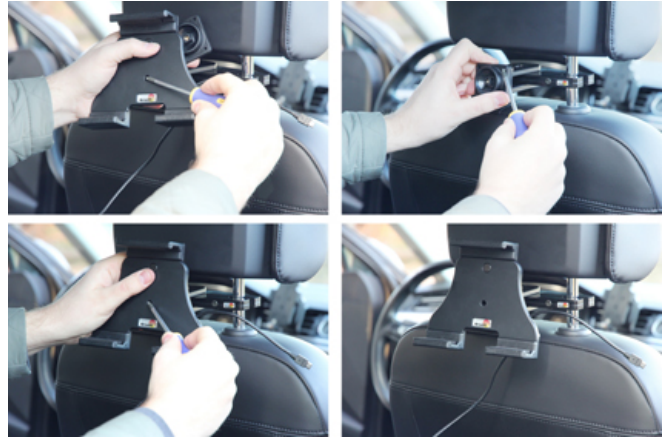
EAN: 7320285219403

INSTALLATION INSTRUCTIONS

1.



2.



3.



4.



Please read all of the instructions and look at the pictures before attaching the holder. 1. Connect the charging cable to the device. Choose which way you want to use your device in the holder. Press the charging cable into place in the enclosed cable mount and place the cable mount over the predrilled holes on back of the holder, choose direction/side depending on how you want to run the cable. Make sure the cable is long enough to be connected to the device. Screw the cable mount onto the holder with the enclosed screws. 2. Loosen the screw in the center of the holder and remove the tilt swivel attaching plate on the back. Place the attaching plate onto the desired position and screw it into place with the enclosed screws. Place the holder over the attaching plate so the screw fits in the hole in the tilt swivel. Tighten the screw until the holder is firmly in place, but still can be adjusted. 3. Place device in holder: Place the upper part of the device under the upper part of the holder. Press upward so the upper part of the holder slides upwards. Press the lower part of the device forward so the device is placed straight in the holder. Stop pressing upward so the upper part of the holder slides downward and rests on the device. Press downwards **HARD** on top of the holder, in the same time tighten the wingnut on the back of the holder **FIRMLY**. **IMPORTANT:** It is very important to press downward **HARD** on top of the holder and to tighten the wingnut **FIRMLY** so the device is properly held in place in the holder. Remove device from holder: Loosen the wingnut. Press the device upward so the the upper part of the holder slides upward. Lift the device downward and out of the holder. 4. The holder is in place.