

Quick Installation Guide

INR-406

128-Channel 8-Bay Rackmount Standalone NVR

INR-407

256-Channel 8-Bay Rackmount Standalone NVR

BEFORE YOU START

Thank you for purchasing ACTi Standalone Network Video Recorder. This guide contains all the information you need to quickly set up ACTi INR server system via local interface.

For detailed instructions on installation, operation and how to log in to INR as a web client, please refer to the product manuals provided on ACTi corporate website.

The items below are prerequisite for installation:

- Network cameras
- Network cables
- Network switch
- Monitor (with HDMI, DVI or Display Port cable)
- USB mouse
- At least one ACTi-certified 3.5-inch SATA hard disk

Find the certified disk models at <http://www.acti.com/hddselector>

HARDWARE INSTALLATION

UNPACK

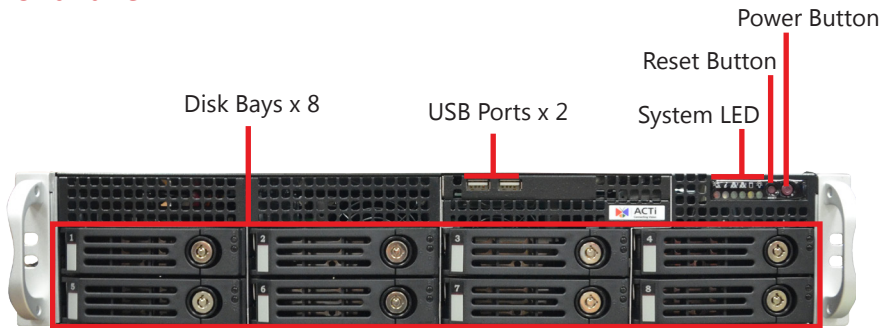
This package contains:

- INR
- Rail Kit
- Power Cord
- Universal Converter
- Disk Screws Pack
- Warranty Card

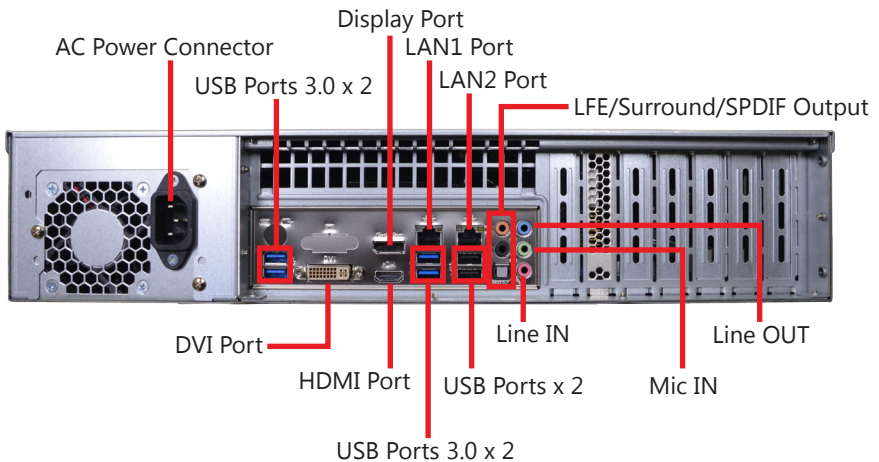


AT A GLANCE

Front Panel



Rear Panel



RACKMOUNT THE UNIT

This unit is designed to be mounted on a standard server rack, which occupies 2U (3.5") of vertical space.

1. Allow a minimum of 5 cm clearance at the front and the rear for front-to-back airflow of the unit.
2. Use the bundled rail kit, and install that to support the entire unit.
3. Secure the unit onto the rack.



INR Sliding Rail Kit



HARD DISK INSTALLATION

Make sure this unit is turned off, and insert the hard disks into the disk bays following the sequence of tray numbers.

REMOVE THE TRAY

Step 1

Slide the lock tab aside, and the hinge tab will pop out by itself.



Step 2

Hold the tab lever and pull out the tray.



MOUNT THE DISK

Step 3

Loosen the two screws on the tray to remove the dummy disk. Secure the hard disk on the tray with the provided disk screws. Make sure the disk connector faces towards the SATA contacts inside the unit.

INSTALL THE TRAY

Step 4

Place your thumb on the lock to push the tray into position in the chassis.



Step 5

Press the hinge tab until it clicks into place.

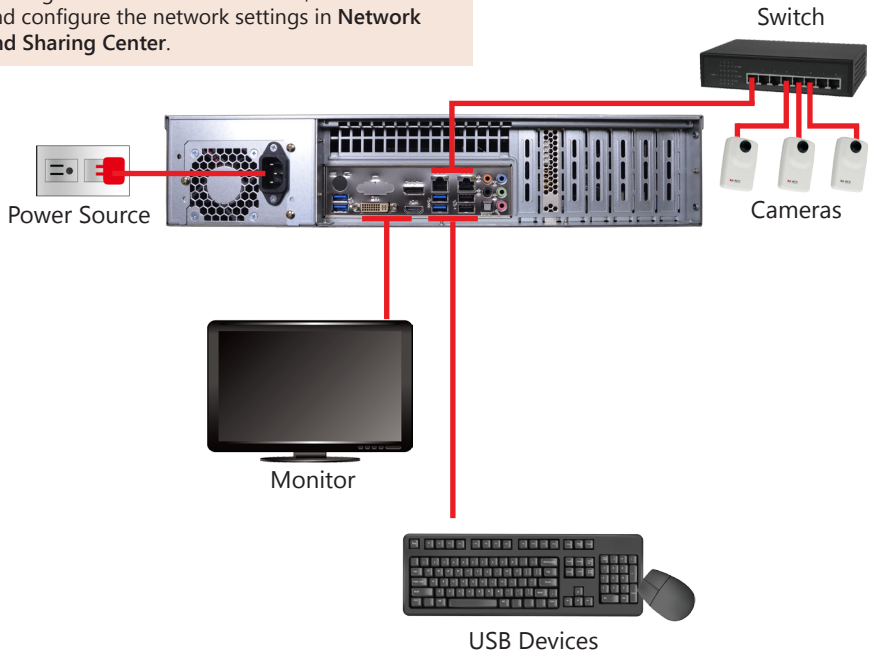


CONNECT THE DEVICES

The example below displays a network consisting of only INR, network cameras and required peripherals. Please remember to enable the DHCP service on your router for INR to obtain an IP address automatically.

Note

To assign a static IP address to INR, enter Windows and configure the network settings in **Network and Sharing Center**.

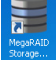


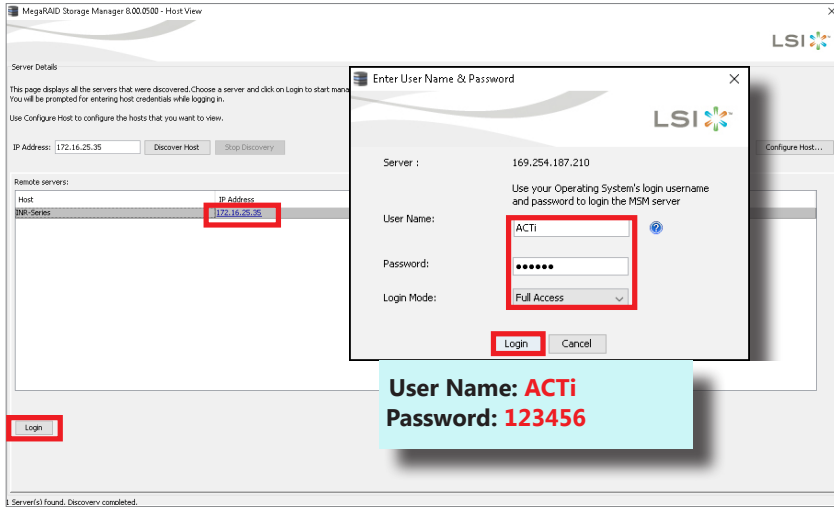
START-UP

1. On the front panel, press the **Power Button** to turn on the unit.
2. On the Windows login screen, follow the on-screen instructions to setup your login password. This will be used in succeeding Windows login. It is strongly recommended not to leave the password blank.

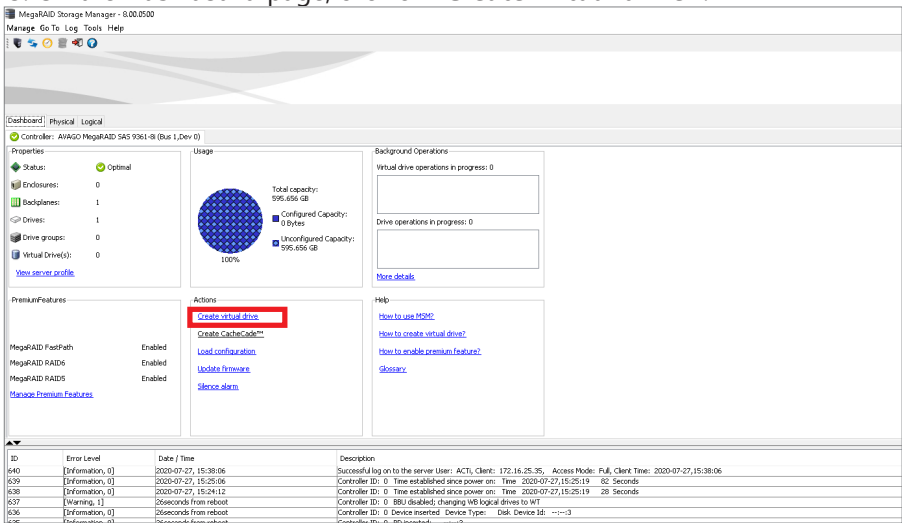
CREATE HARDWARE RAID (OPTIONAL)

As this unit supports hardware RAID configuration, you can make disk arrays using the bundled software utility.

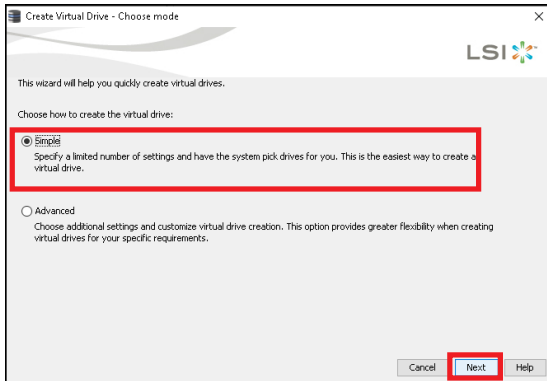
1. On Windows Desktop, double-click on the shortcut  to initialize the RAID management utility.
2. On **Remote servers** list, select the IP address of this server and click on **“Login”**. On the login window, input the credentials and click **“Login”**.



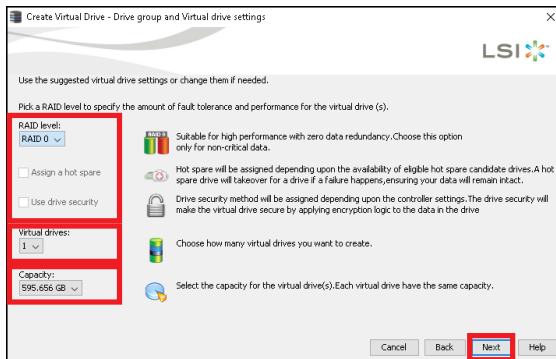
3. On the **Dashboard** page, click on **“Create virtual drive”**.



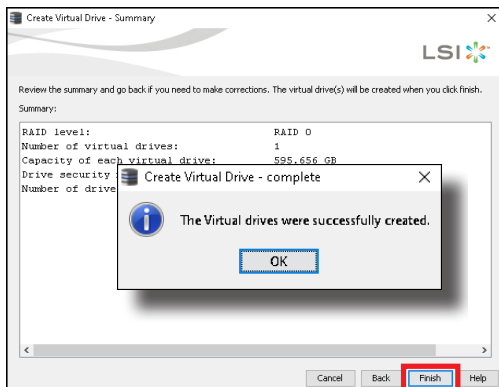
4. Choose **“Simple”** mode and then click on **“Next”**.



5. Select the **RAID level**, number of **Virtual drives** (arrays) and the **Capacity** of the array, and then click on **“Next”**.



6. On confirmation window, click on **“Finish”**.

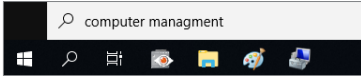


SOFTWARE CONFIGURATION

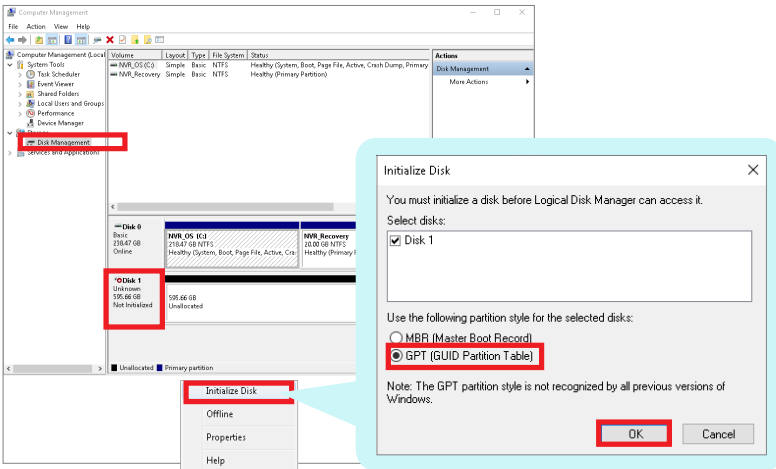
CREATE DISK VOLUMES

Use **Windows Disk Management** to create disk volumes so that INR can access the available storage space.

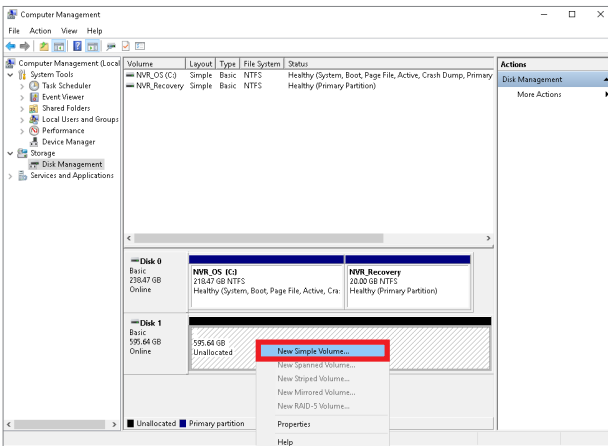
1. On Windows Search Box, search and enter **"computer management"**.



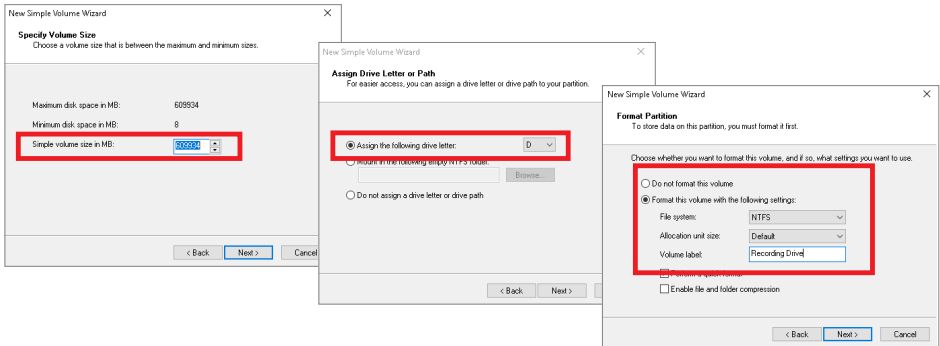
2. Select **"Disk Management"**, right-click on a disk title and select **"Initialize Disk"**, choose **"GPT"** as the partition style and click on **"OK"**.



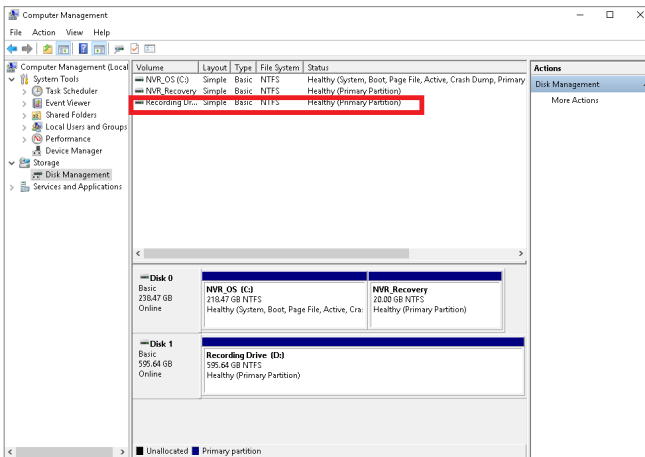
3. Right-click on the initialized disk and select the volume type to make a new volume.



4. Follow the on-screen **Wizard** to complete. Make sure you assign the desired drive letter and give a proper label name to this volume.



5. After the volume is created, it is shown on **Volume List** and is ready for recording.



Note

To make a Striped volume, a Mirrored volume or a RAID-5 volume, it is recommended that you select disks of the same model and capacity.

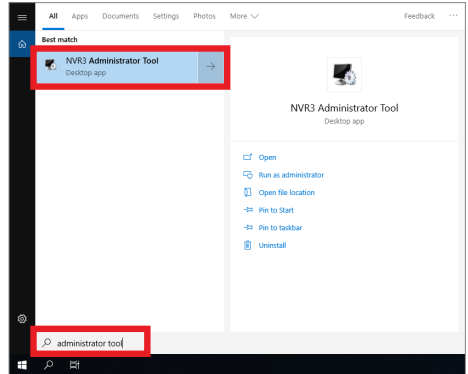
Note

For detailed instructions on choosing the RAID types and troubleshooting hard disk issues, please refer to System Administrator's manual provided on ACTi Download Center at <http://www.acti.com/downloadcenter>

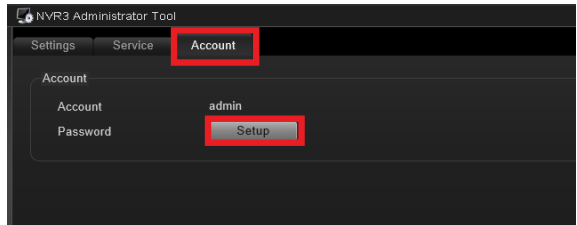
SET ADMIN PASSWORD

For first-time use, make sure to setup the administrator password.

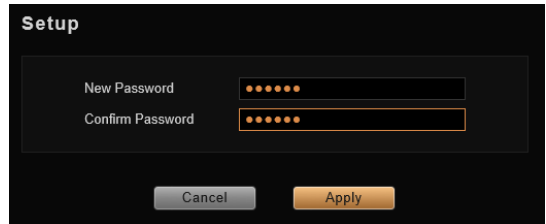
1. On Windows Search Box, search and enter "*administrator tool*".
2. Click **NVR3 Administrator Tool** to open the application.



3. On the tool interface, go to the **Account** page, then click the Password **Setup** button.



4. Type the preferred password, and then click **Apply**.

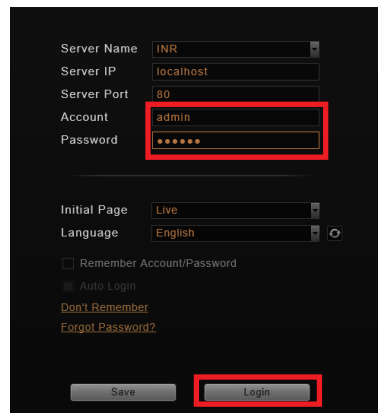


LOG IN

On Windows Destop, double-click on to enter NVR interface.



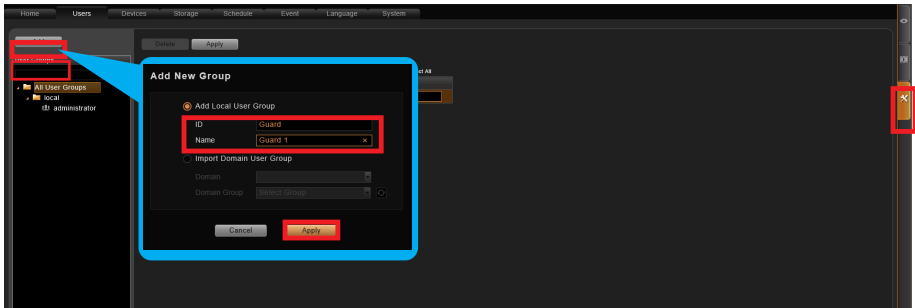
Type the **Account** and **Password**, and click **Login**.



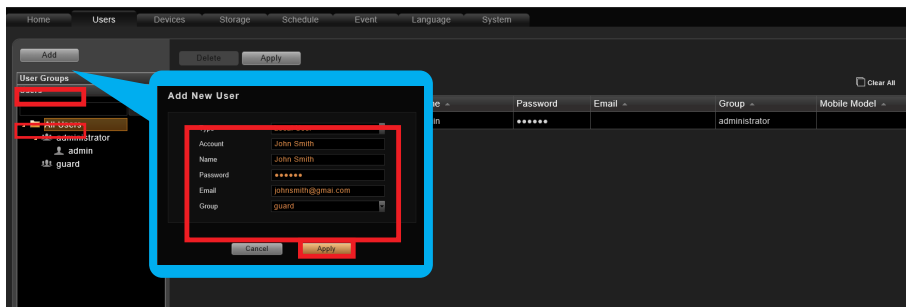
CREATE USERS

On NVR screen, click **Setup** button to enter **Setup** page and then **Users** tab.

1. Select "**User Groups**", click "**Add**" to start adding a new user group.
2. Input group ID, Name, and click "**Apply**".

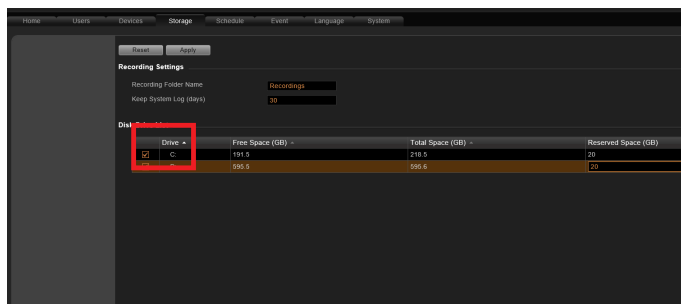


3. Click on the **Users** panel, click "**Add**" to start adding a new user.
4. Input the user's **Account**, **Password**, **Email** address and select its **User Group**, and then click "**Apply**".



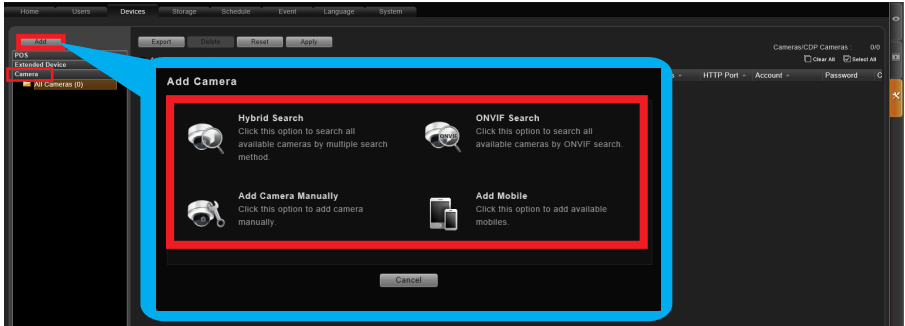
SELECT STORAGE DRIVES

1. Go to **Setup** page and then **Storage** tab.
2. On **Disk Drive List**, de-select C Drive, and select other storage drives.
3. Click "**Apply**".



ADD CAMERAS

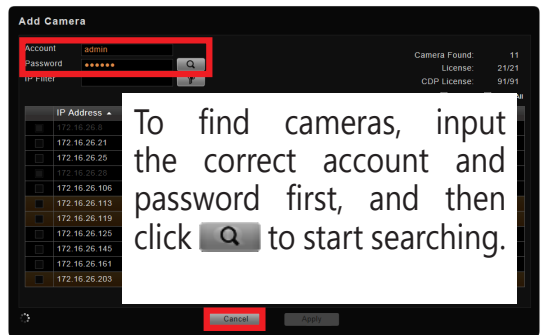
1. Go to **Setup** page and then **Devices** tab.
2. Select the **Camera** panel, and then Click **“Add”**.
3. Choose a search method based on your network environment and camera brand.



Search Cameras

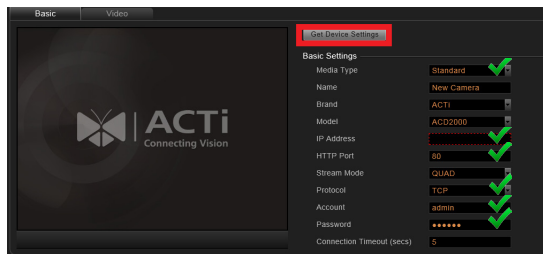
Use **“Hybrid Search”** to automatically search the network for all cameras, or click **“ONVIF Search”** for ONVIF-compliant cameras of any brand.

After selecting your desired cameras, click **“Apply”**.



Add Camera Manually

If you are adding a camera located in another network, use **“Add Camera Manually”**. Fill in **Media Type, Protocol, IP Address, HTTP Port, Account** and **Password**. Finally, click **“Get Device Settings”** and then **“Apply”**.



Add Mobile

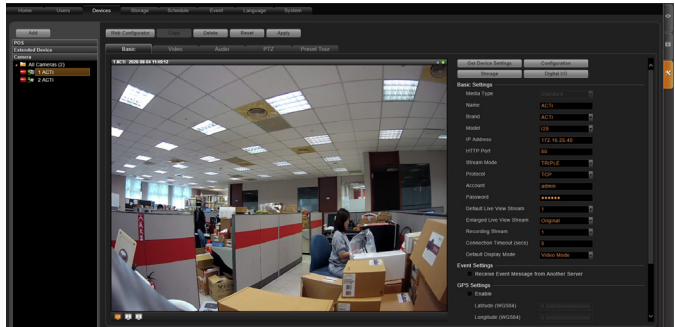
Use **“Add Mobile”** to search for mobile device cameras in the network. Select the device and click **“Accept”**.

CONFIGURE CAMERA SETTINGS

1. Go to **Setup** page and then **Devices** tab. Choose the camera from the **Camera List**.
2. Select **Basic**, **Video**, **Audio**, **PTZ**, or **Preset Tour** tab to configure related settings.
3. Click "**Apply**" to save the settings.

Note

Availability of page tabs depend on camera capabilities.



SET RECORDING SCHEDULE

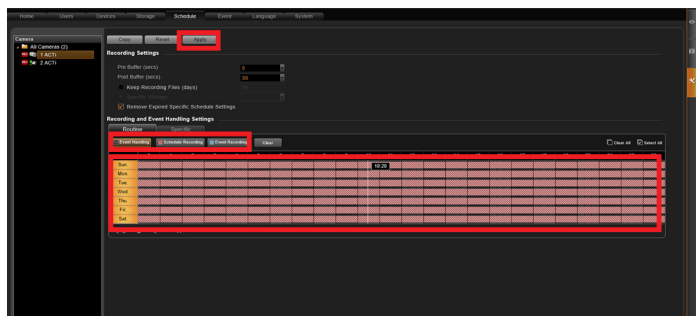
The recording service automatically starts full-time recording for a newly added camera. You can modify the recording schedule to suit your needs.

1. Go to **Setup** page and then **Schedule** tab. Select the camera from **Camera List**.
2. Choose a recording mode: **Schedule Recording** or **Event Recording**

Schedule Recording: Records video continuously during the scheduled session.

Event Recording: Records video based on specific triggers such as when a motion is detected by the camera.

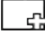



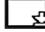

3. Drag on the time table to define the time session.
4. Click "**Apply**".



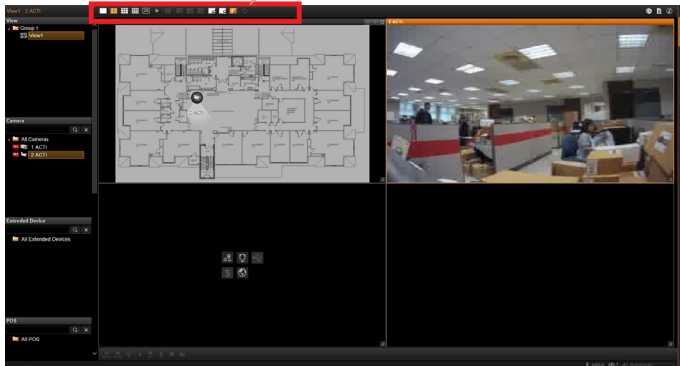
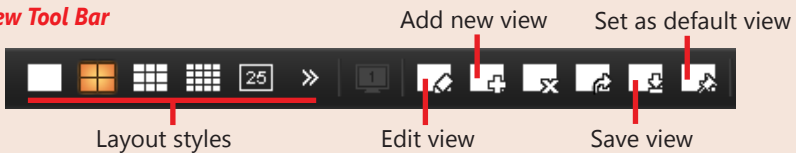
Note

If you have any question during system installation, please feel free to contact our engineers via **ACTi Customer Help Desk** platform at <http://www.acti.com/CHD>

CUSTOMIZE VIEWS

1. Go to **Live View** page. On top of the screen, click on  on the **View Tool Bar** to create a new layout, then click on  to enter edit mode.
2. Select a layout style.
3. To add a camera view, pull a camera from **Camera List** to a channel. To add a map view, mouse over a channel and click on , upload the map. Drag the lower right corner  to adjust the channel size.
4. On the **View Tool Bar**, click on  to save this view.
5. You can set this view as default view by clicking on .

View Tool Bar



VALIDATION



To check live streaming of all channels, go to Live View page, double-click on  on **Camera List**.



To check recording, go to **Playback** page, and then select (double-click) a view from **View List** or a camera from **Camera List**. Drag on the time bar to see the recorded video.

Due to continuous product improvements, some contents may have changed from the time this documentation was printed. You can download the latest user documentation, which shall prevail over the printed version provided in the package, from <http://www.acti.com/downloadcenter>.