



## Product 553820



**553820 Holder for Locking** Active holder with USB-cable. Apple approved charging cable. With tilt swivel. With spring stud locking.

This holder is to be used when you want to have your iPad Pro extra securely in place and still have it easy accessible. The holder is approved for use on Brodit's headrest mount. The holder is equipped with a cig-plug for connection to the vehicle's 12 Volt socket so you will always have a freshly charged battery!

The holder is made of extra strong plastic and is equipped with a spring stud locking device. The holder is mounted onto a tilt swivel. This mean that you can adjust the angle in order to avoid light reflection on the screen. You can easily switch between portrait and landscape mode by turning the holder into desired position.

Length of charging cable: 123cm.

Tablets (Surfpads) should not be installed onto a car's dashboard if they block the view or block key controls. ProClip (Brodit's vehicle mounting bracket) is designed for installation of smaller devices like mobile phones and GPS devices, ProClip is not designed for large devices like tablets. In some vehicles the ProClip has an extra firm fit and can then be used also for installation of a tablet. If you want to place a tablet onto the car's dashboard, each combination of tablet-car must be examined in detail by you in order to determine if such an installation is possible in the specific case. Consideration should be given to the position and how firmly the ProClip is in place, as well as the size of the tablet you wish to use. Brodit will not give any recommendations for such installations.

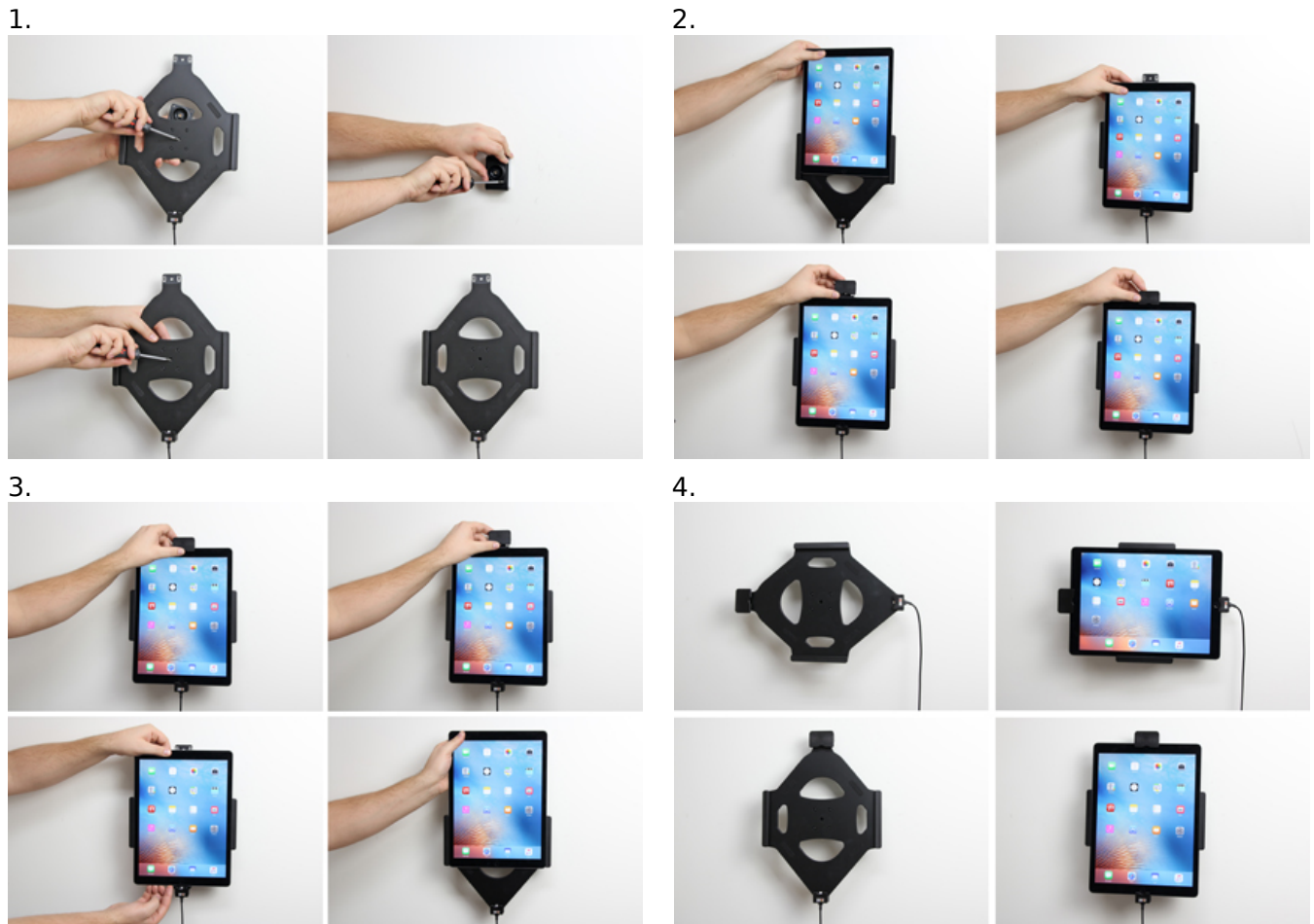
An installation of a tablet onto a vehicle's dashboard is always done on the customer's own responsibility. Brodit recommends to use tablets on the car's headrest, installed onto a Brodit headrest mount.

EAN: 7320285538207

**Item no 553820 fits:**

Apple iPad Pro 12.9 (For all countries)

## INSTALLATION INSTRUCTIONS



Please read all of the instructions and look at the pictures before attaching the holder.

1. Loosen the screw in the center of the holder so you can remove the tilt swivel attaching plate on the back. Place the attaching plate onto the desired position. Screw the attaching plate into place with the enclosed screws. Place the holder over the attaching plate so the screw fits in the hole in the tilt swivel. Screw the holder onto the attaching plate. Tighten the screw so the holder is firmly in place, but still can be adjusted.
  2. Slide the device carefully into the holder from above. Press the lock onto the top part of the holder. Press the button to lock.
  3. Use the enclosed key to open the lock. Remove the lock by sliding it upwards away from the holder. Slide the device upwards carefully out of the holder.
  4. The holder is in place. Switch between portrait and landscape mode by turning the holder into desired position.
-