



## Product 552681



**552681 Holder with lock.** Active holder with USB-cable, with tilt swivel. 2 keys included. For Otterbox Defender Series case.

The choice when you want to secure your tablet and still have it easy accessible. The holder is designed for use on Brodit's headrest mount. The holder is also perfect for use in stores, at exhibitions and any place where you want to use your tablet without having it easy removable. The holder is made of extra strong plastic and is equipped with a lock. In order to remove the device from the holder you need the key, two keys are included. Equipped with a tilt swivel so you can adjust the angle and switch between portrait and landscape mode.

The active holder charges your device when it is in the holder. You can choose to connect the cig-plug to the car's 12 Volt socket, or to remove the cig-plug adapter and connect the USB cable to the car's (or stereo's) USB connector.

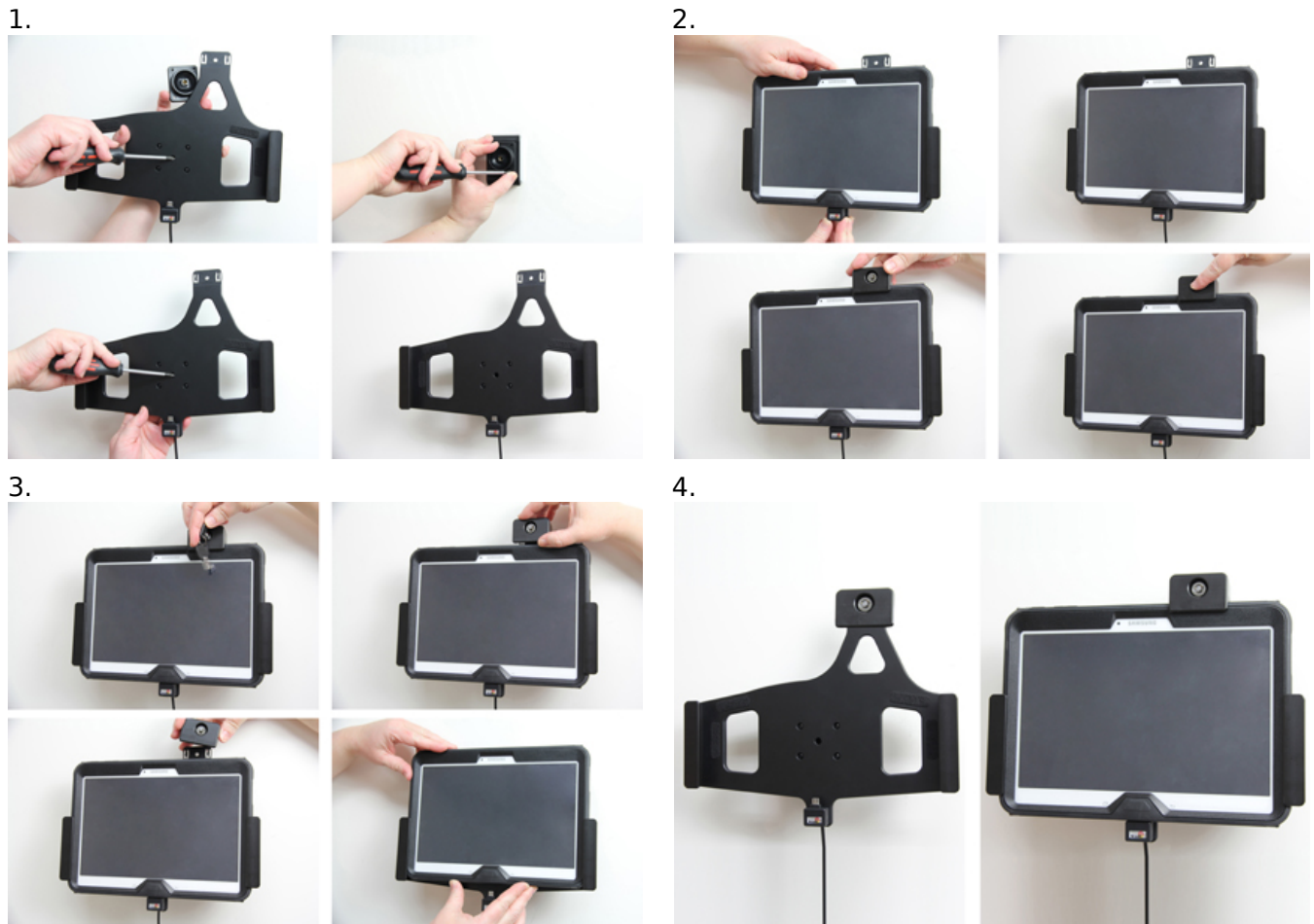
Tablets should not be installed onto a car's dashboard if they block the view or block key controls. The ProClip is designed for installation of smaller devices (phones), not for large devices (tablets). If you want to place a tablet onto the car's dashboard, each combination of tablet-car must be examined in detail by you in order to determine if such an installation is possible in the specific case. Consideration should be given to the position and how firmly the ProClip is in place, as well as the size of the tablet you wish to use. Brodit will not give any recommendations for such installations.

EAN: 7320285526815

**Item no 552681 fits:**

- Samsung Galaxy Tab 4 10.1 SM-T530 (For all countries)
- Samsung Galaxy Tab 4 10.1 SM-T531 (For all countries)
- Samsung Galaxy Tab 4 10.1 SM-T535 (For all countries)

## INSTALLATION INSTRUCTIONS



**Important Note:** The charger unit is fused internally with 2 A automotive re-settable thermal fuse, but if an external fuse is to be installed then connect a 2 A fuse holder and fuse inline with the Red wire close to the power source. Route the cable from the holder into the vehicle dashboard and secure the charger unit in place with the adhesive tape provided. Ensure the charger unit is securely mounted behind the dashboard in a well ventilated area that does not get hot! Connect as follows: 1. Connect the White wire to a Negative Ground connection of the vehicle or the vehicle chassis. 2. Connect the Red wire to a 12/24 Volt power supply in the vehicle that is controlled by the ignition switch of the vehicle. Installation of the holder:

Please read all of the instructions and look at the pictures before attaching the holder. 1. Loosen the screw in the center of the holder so you can remove the tilt swivel attaching plate on the back. Place the attaching plate onto the desired position. Screw the attaching plate into place with the enclosed screws. Place the holder over the attaching plate so the screw fits in the hole in the tilt swivel. Tighten the screw until the holder is firmly in place, but still can be adjusted. 2. Slide the device carefully into the holder from above. Press the lock onto the top part of the holder. Press the button to lock. 3. use the enclosed key to open the lock. Remove the lock by sliding it upwards away from the holder. Slide the device carefully upwards out of the holder. 4. The holder is in place. Switch between portrait and landscape mode by turning the holder into desired position.