



Product 547820



547820 Holder for Locking Active holder for fixed installation. With tilt swivel. With spring stud locking.

This holder is to be used when you want to have your iPad Pro extra securely in place and still have it easy accessible. The holder is approved for use on Brodit's headrest mount.

The active holder is to be connected inside the dashboard. It provides a discreet and neat installation without any cables hanging over the interior. Safe and convenient!

12 Volt. The product is E-approved. Connect the power cable with a 2 A fuse. 2 A charger. Professional installation recommended.

The holder is made of extra strong plastic and is equipped with a spring stud locking device. The holder is mounted onto a tilt swivel. This mean that you can adjust the angle in order to avoid light reflection on the screen. You can easily switch between portrait and landscape mode by turning the holder into desired position.

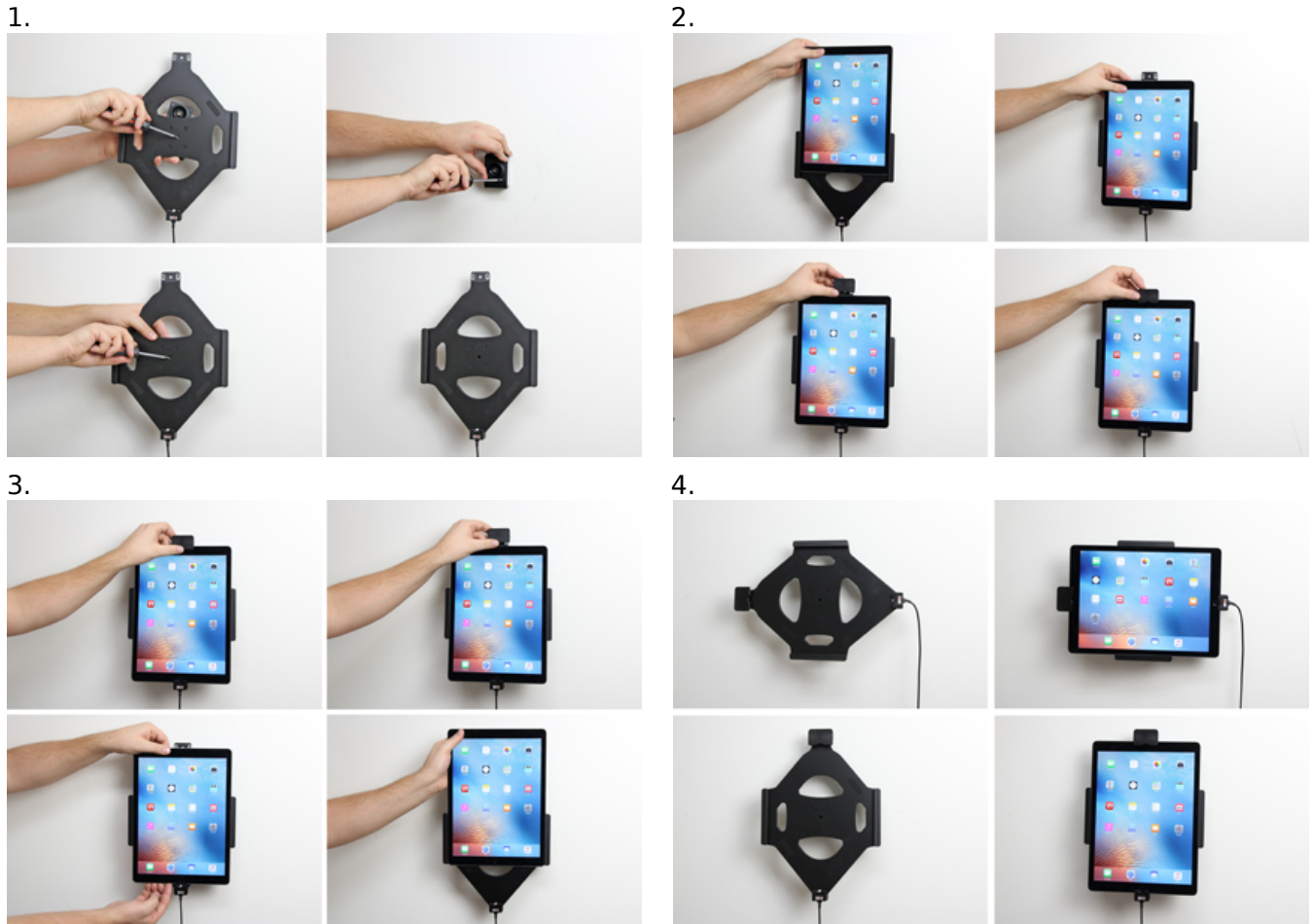
Tablets should not be installed onto a car's dashboard if blocking the view or key controls. ProClip is designed for use with smaller devices like smartphones. If you want to place a tablet onto a dashboard, each combination of tablet-car must be examined in detail by yourself in order to determine if such an installation is possible in the specific case. Brodit will not give any recommendations for such installations. An installation of a tablet onto a vehicle's dashboard is always done on the customer's own responsibility. Brodit recommends using tablets on the car's headrest, installed onto a Brodit headrest mount.

EAN: 7320285478206

Item no 547820 fits:

Apple iPad Pro 12.9 (For all countries)

INSTALLATION INSTRUCTIONS



Important Note: Connect to a 2 A fuse holder and fuse inline with the Red wire close to the power source. Route the cable from the holder into the vehicle dashboard and secure the charger unit in place with the adhesive tape provided. Ensure the charger unit is securely mounted behind the dashboard in a well ventilated area that does not get hot! Connect as follows: 1. Connect the White wire to a Negative Ground connection of the vehicle or the vehicle chassis. 2. Connect the Red wire to a 12/24 Volt power supply in the vehicle that is controlled by the ignition switch of the vehicle. Installation of the holder:

Please read all of the instructions and look at the pictures before attaching the holder. 1. Loosen the screw in the center of the holder so you can remove the tilt swivel attaching plate on the back. Place the attaching plate onto the desired position. Screw the attaching plate into place with the enclosed screws. Place the holder over the attaching plate so the screw fits in the hole in the tilt swivel. Tighten the screw until the holder is firmly in place, but still can be adjusted. 2. Slide the device carefully into the holder from above. Press the lock onto the top part of the holder. Press the button to lock. 3. use the enclosed key to open the lock. Remove the lock by sliding it upwards away from the holder. Slide the device carefully upwards out of the holder. 4. The holder is in place. Switch between portrait and landscape mode by turning the holder into desired position.