



Product 547681



547681 Holder for Locking Active holder for fixed installation. With spring stud locking. For Otterbox Defender Series case.

The choice when you want to have your tablet extra securely in place and still have it easy accessible. Designed for use on Brodit's headrest mount. For fixed installation, provides a discreet installation without any cables hanging. 12/24 Volt. E-approved. Connect power cable with a 2 A fuse. 2 A charger. Professional installation recommended

Made of extra strong plastic and equipped with a spring stud locking device. Mounted onto a tilt swivel so you can adjust the angle and switch between portrait and landscape mode.

Tablets should not be installed onto a car's dashboard if they block the view or block key controls. The ProClipsis designed for installation of smaller devices like smartphones), not large tablets. If you want to place a tablet onto the car's dashboard, each combination of tablet-car must be examined in detail by you in order to determine if such an installation is possible in the specific case. Consideration should be given to the position and how firmly the ProClip is in place, as well as the size of the tablet you wish to use. Brodit will not give any recommendations for such installations.

An installation of a tablet onto a vehicle's dashboard is always done on the customer's own responsibility. Brodit recommends to use tablets on the car's headrest, installed onto a Brodit headrest mount.

Charging specifications:

Input voltage: DC/10-30V

Charging voltage: DC/4.75-5.3V

Output current(Typ): 2.0A

Input & output protection: Input polarity reversal/Output over voltage/Output over current/Output short protection

LED charging indicator: Power input indicator(Green), Ovp/Ocp/Output short(Red)

Operating temperature: 0°C ~ +40°C

Storage temperature: -20°C ~ +80°C

RoHS compliant: ROHS

EAN: 7320285476813

Item no 547681 fits:

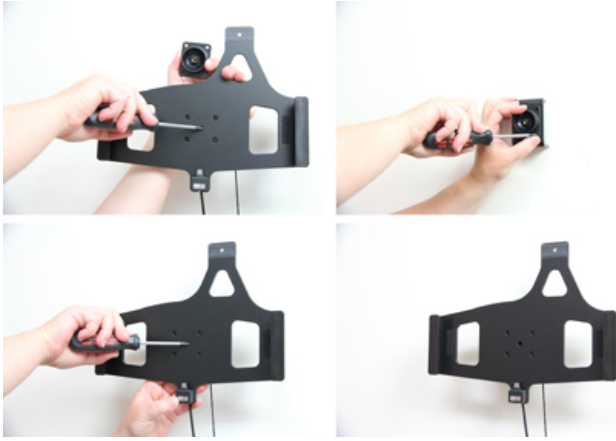
Samsung Galaxy Tab 4 10.1 SM-T530 (For all countries)

Samsung Galaxy Tab 4 10.1 SM-T531 (For all countries)

Samsung Galaxy Tab 4 10.1 SM-T535 (For all countries)

INSTALLATION INSTRUCTIONS

1.



2.



3.



4.



Important Note: The charger unit is fused internally with 2 A automotive re-settable thermal fuse, but if an external fuse is to be installed then connect a 2 A fuse holder and fuse inline with the Red wire close to the power source. Route the cable from the holder into the vehicle dashboard and secure the charger unit in place with the adhesive tape provided. Ensure the charger unit is securely mounted behind the dashboard in a well ventilated area that does not get hot! Connect as follows: 1. Connect the White wire to a Negative Ground connection of the vehicle or the vehicle chassis. 2. Connect the Red wire to a 12/24 Volt power supply in the vehicle that is controlled by the ignition switch of the vehicle. Installation of the holder: Please read all of the instructions and look at the pictures before attaching the holder. 1. Loosen the screw in the center of the holder so you can remove the tilt swivel attaching plate on the back. Place the attaching plate onto the desired position. Screw the attaching plate into place with the enclosed screws. Place the holder over the attaching plate so the screw fits in the hole in the tilt swivel. Screw the holder onto the attaching plate. Tighten the screw so the holder is firmly in place, but still can be adjusted. 2. Slide the device from above carefully into the holder until you feel that it is properly attached. Press the spring stud locking device onto the upper part of the holder. 3. Remove the spring stud locking device by sliding it upwards away from the holder. Slide the device upwards carefully out of the holder. 4. The holder is in place. Switch between portrait and landscape mode by turning the holder into desired position.