



## Product 546652



**546652 Holder for Locking** Active holder with cig-plug. With tilt swivel. With spring stud locking.

The holder with locking is to be used when you want to have your tablet extra firmly in place. The holder has a spring stud locking device, it keeps your device in a firm grip in the holder.

This holder is equipped with a cig-plug cable for charging of your device. The holder is mounted onto a tilt swivel. This mean you can easily adjust the angle for better viewing and switch between portrait and landscape mode simply by turning the holder into desired position. 12/24V charging.

Tablets (Surfpads) should not be installed onto a car's dashboard if they block the view or block key controls. ProClip (Brodit's vehicle mounting bracket) is designed for installation of smaller devices like mobile phones and GPS devices, ProClip is not designed for large devices like tablets. In some vehicles the ProClip has an extra firm fit and can then be used also for installation of a tablet. If you want to place a tablet onto the car's dashboard, each combination of tablet-car must be examined in detail by you in order to determine if such an installation is possible in the specific case. Consideration should be given to the position and how firmly the ProClip is in place, as well as the size of the tablet you wish to use. Brodit will not give any recommendations for such installations.

An installation of a tablet onto a vehicle's dashboard is always done on the customer's own responsibility. Brodit recommends to use tablets on the car's headrest, installed onto the Brodit headrest mount.

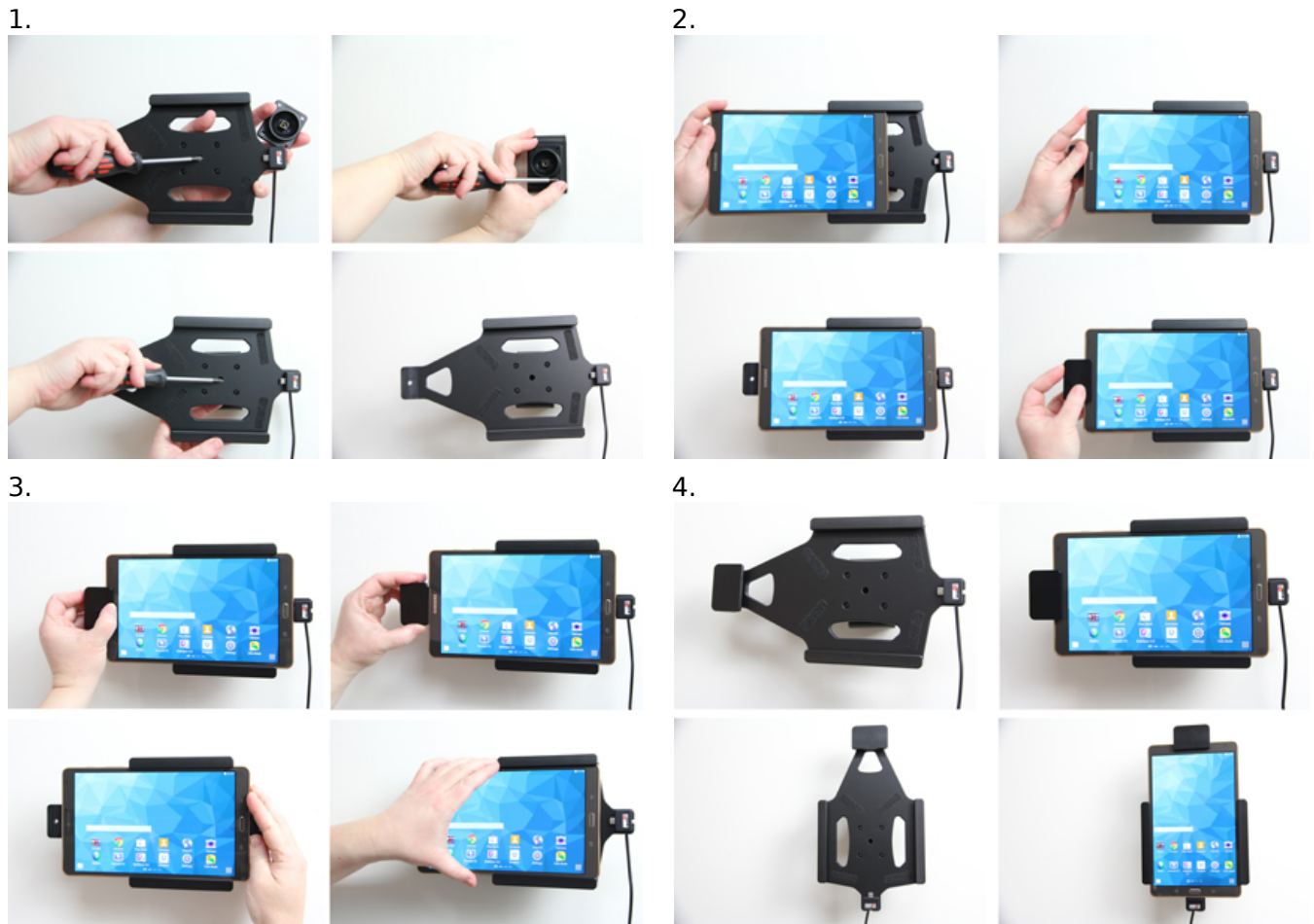
EAN: 7320285466524

**Item no 546652 fits:**

Samsung Galaxy Tab S 8.4 SM-T700 (For all countries)

Samsung Galaxy Tab S 8.4 SM-T705 (For all countries)

## INSTALLATION INSTRUCTIONS



Please read all of the instructions and look at the pictures before attaching the holder.

1. Loosen the screw in the center of the holder so you can remove the tilt swivel attaching plate on the back. Place the attaching plate onto the desired position. Screw the attaching plate into place with the enclosed screws. Place the holder over the attaching plate so the screw fits in the hole in the tilt swivel. Screw the holder onto the attaching plate. Tighten the screw so the holder is firmly in place, but still can be adjusted.
  2. Slide the device sideways carefully into the holder until you feel that it is properly attached to the connector. Press the spring stud locking device sideways onto the left part of the holder.
  3. Remove the spring stud locking device by sliding it sideways away from the holder. Slide the device sideways carefully out of the holder.
  4. The holder is in place. Switch between portrait and landscape mode by turning the holder into desired position.
-