



Product 513779



513779 Active holder for fixed installation With tilt swivel, with Molex adapter system. 2A charger.

An active holder which is to be connected inside the dashboard, this gives a discreet, neat installation without cables hanging over the interior!

You can choose to use the holder as an active holder for charging of your device only, or to connect an adapter to the Molex connector for additional features. Then you can use the holder also for power supply of a GPS receiver or other own solutions (can not be used for data communication or audio connection).

12/24 Volt. The product is E-approved. Connect the power cable with a 2 A fuse. 2 A charger. Professional installation recommended.

The holder is attached onto a tilt swivel and can be adjusted in order to avoid light reflection. Attach onto ProClip Mounting Platform. The holder is only for use of devices with the Nokia original case which comes with the phone (the holder will not fit devices without case).

Charging specifications:

Input voltage: DC/10-30V

Charging voltage: DC/4.75-5.3V

Output current(Typ): 2.0A

Input & output protection: Input polarity reversal/Output over voltage/Output over current/Output short protection

LED charging indicator: Power input indicator(Green), Ovp/Ocp/Output short(Red)

Operating temperature: 0°C ~ +40°C

Storage temperature: -20°C ~ +80°C

RoHS compliant: ROHS

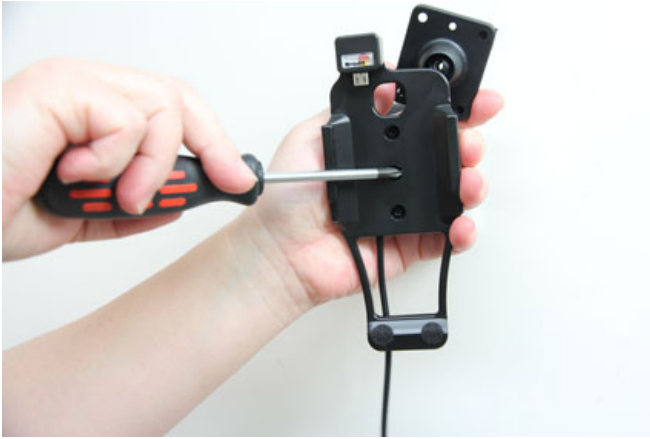
EAN: 7320285137790

Item no 513779 fits:

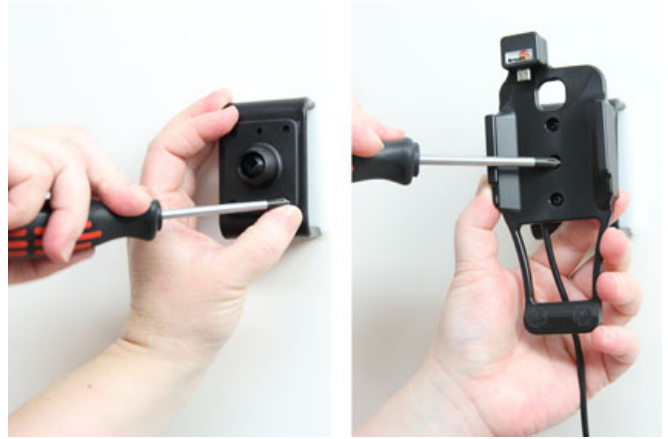
Nokia 225 (For all countries)

INSTALLATION INSTRUCTIONS

1.



2.



3.



4.



Please read all of the instructions and look at the pictures before attaching the holder. Note: The charger unit is fused internally with 2 A automotive re-settable thermal fuse, but if an external fuse is to be installed then connect a 2 A fuse holder and fuse inline with the Red wire close to the power source. Route the cable from the holder into the vehicle dashboard and secure the charger unit in place with the adhesive tape provided. Ensure the charger unit is securely mounted behind the dashboard in a well ventilated area that does not get hot! Note: If you are connecting a GPS/Data device to the holder please ensure the charger unit is located in a position within easy reach of any GPS or charging adapters. Route the power cable from the charger unit to the power supply source in the vehicle and connect as follows: 1. Connect the White wire to a Negative Ground connection of the vehicle or the vehicle chassis. 2. Connect the Red wire to a 12/24 Volt power supply in the vehicle that is controlled by the ignition switch of the vehicle. Attaching the holder: 1. Loosen the screw in the center of the holder so you can remove the tilt swivel attaching plate on the back. Place the attaching plate onto the desired position. Screw the attaching plate into place with the enclosed screws. 2. Place the holder over the attaching plate so the screw fits in the hole in the tilt swivel. Screw a few turns on the screw, just so the thread starts to pull. Pull the holder toward you and hold it slightly tensed, in the same time tighten the screw so the holder is pulled toward the tilt swivel. Tighten the screw until the holder is firmly in place, but still can be adjusted. 3. Carefully slide the device straight upward into the holder. Pull the device straight downward out of the holder. 4. The holder is in place.