

Product 512779



512779 Active holder with cig-plug With tilt swivel.

The active holder charges your Nokia when it is in the holder. The holder is attached onto a tilt swivel and can be adjusted in order to avoid light reflection. Connects to the vehicle's cigarette lighter socket, 12/24 Volt. Attach onto a ProClip Mounting Platform.

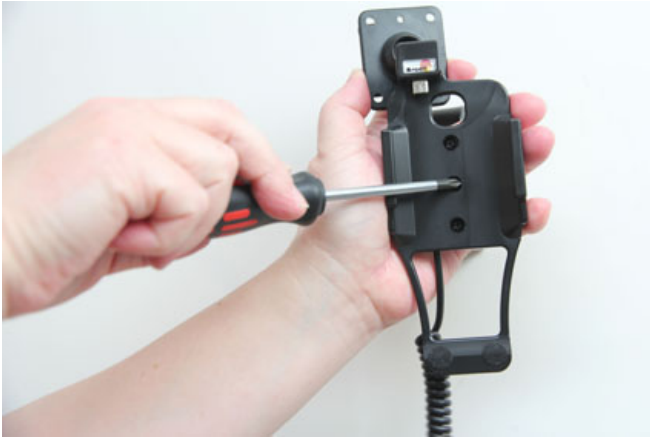
EAN: 7320285127791

Item no 512779 fits:

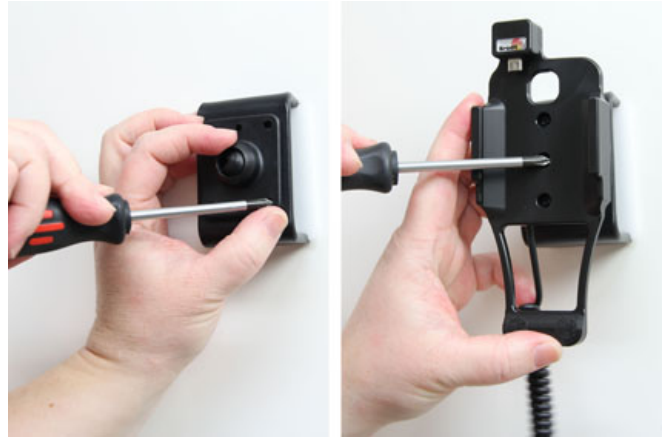
Nokia 225 (For all countries)

INSTALLATION INSTRUCTIONS

1.



2.



3.



4.



Please read all of the instructions and look at the pictures before attaching the holder.

1. Loosen the screw in the center of the holder so you can remove the tilt swivel attaching plate on the back. Place the attaching plate onto the desired position. Screw the attaching plate into place with the enclosed screws.

2. Place the holder over the attaching plate so the screw fits in the hole in the tilt swivel. Screw a few turns on the screw, just so the thread starts to pull. Pull the holder toward you and hold it slightly tensed, in the same time tighten the screw so the holder is pulled toward the tilt swivel. Tighten the screw until the holder is firmly in place, but still can be adjusted.

3. Place the device in the holder by carefully sliding straight upward. To remove the device from the holder, simply pull it straight downward out of the holder.

4. The holder is in place.