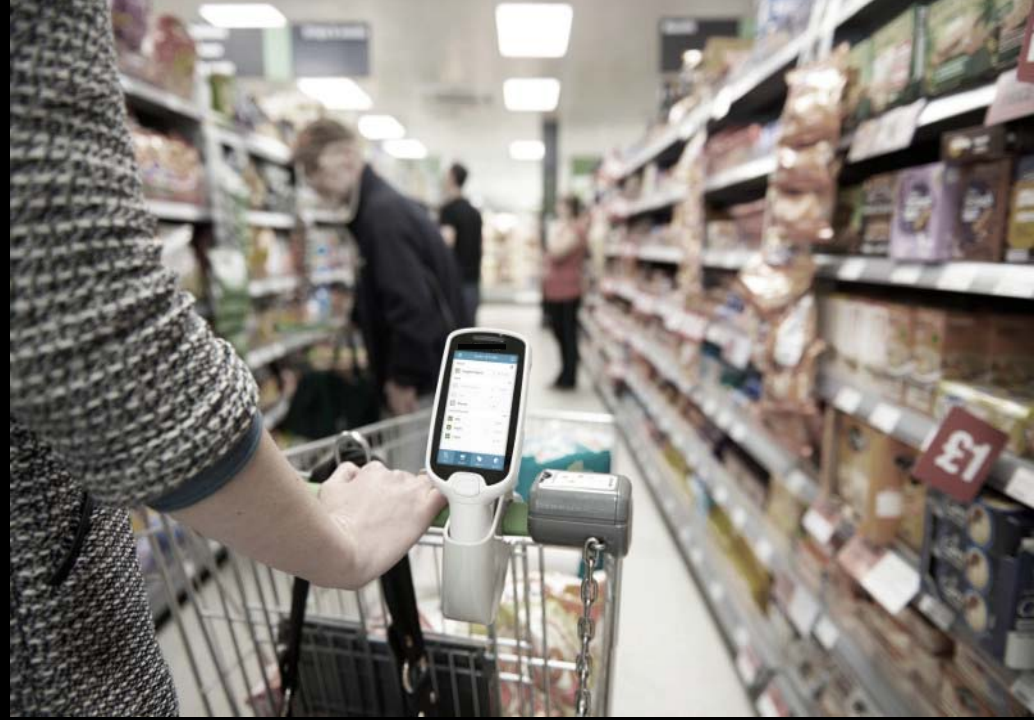




# MC18

## Mobile Computer

Accessories Guide  
*Updated 01 28 2016*



## Step 1: Choose an MC18 configuration

### WIN CE7

OPTION	PART NUMBER	DESCRIPTION
MEMORY	MC18 <b>A</b> -00-KIT-XXX	512MB RAM, 2GB FLASH,
	MC18 <b>G</b> -00-KIT-XXX	1GB RAM, 4GB FLASH,
QUANTITY	MC18X-00-KIT- <b>1</b> X	1-pack,
	MC18X-00-KIT- <b>10</b> X	10-piece bulk pack,

### ANDROID KITKAT

OPTION	PART NUMBER	DESCRIPTION
Single or 10 pack	MC18G-00-KIT- <b>01</b> X	Single pack
	MC18G-00-KIT- <b>10</b> X	10-piece bulk pack

# What Ships with every MC18

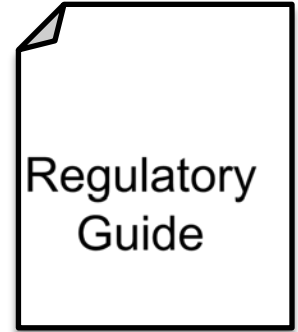


MC18

(Electronic User Guide loaded onto device)



1x Battery



Regulatory Guide

## Step 1: Choose a spare battery

### MC18 Battery

MC18 2,275 mAh PowerPrecision + Lithium-Ion Battery  
PowerPrecision + Batteries: Advanced new battery technology integrated into our newest devices bringing a higher level of intelligence to deliver maximum performance

#### Information stored on each PowerPrecision+ battery:

- Continuously updated capacity as battery ages
- Charge accepted per type of charger
- Time to fully charge and time to fully discharge
- Elapsed time since first use
- Dynamically models the battery life based on historical usage

#### Supported features:

- **Advanced state of health:** actively measures and calculates the battery capacity under standard load conditions and temperature
- **Advanced state of charge:** time to empty under present usage and time to full under present charge condition



Single  
Battery

BTRY-MC18-27MAG-01

10-PK  
Battery

BTRY-MC18-27MAG-10

## STEP 2: Choose a charging method

### Single Slot Cradles



**Single Slot  
Locking  
Cradle**

**CRD-MC18-1SLOT-01**

### 3-Slot Cradles

**3-Slot Non-  
Locking High  
Density Cradle**

**CRD-MC18-3SLOTH-01**

**MC18 3-Slot  
Locking High  
Density Cradle**

**CRD-MC18-3SLCKH-01**

**MC18 3-Slot  
Locking Super  
High Density  
Cradle**

**CRD-MC18-3SLCKS-01**



All MC18 Cradles require Interconnect cables, PWR5-14000-241R, DC line cord, and Country Specific AC line cord sold separately.

### Cradle Accessories

**Cradle Release Key  
(QTY-20)**

**KT-MC18-CKEY-20**



Used to mechanically unlock the MC18 Terminal from the 3-Slot Cradles and 1-Slot Cradles.

**Cradle Cover Removal  
Tool (QTY-1)**

**KT-MC18-CTOOL-01**



Designed to remove cradle top housing for the MC18 3-Slot Cradles where hand space is limited.

## Step 4a: Choose cradle accessories

### Power Supply

**PWRS-14000-241R**

**PWR SPLY: 100-240VAC, 12VDC, 9A .**



Power Supplies for MC18 Cradles. Requires DC Line cord and Country Specific AC Line cord ( sold separately)

### DC "Y" Cables

**25-66210-01R**

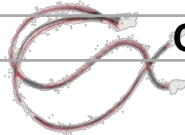
**19.5 Inch**

**25-67592-01R**

**1 Meter**

**CBL-MC18-Y2MET-01**

**Cable 2 Meter**

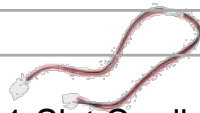


DC "Y" Cables run from Power Supply to two separate charging cradles.

### DC Cables

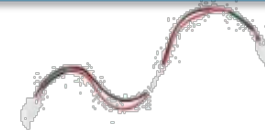
**25-66420-01R**

**19.5 Inch**



DC Charging Cable for 1-Slot Cradles Runs from the Power Supply to one charging cradle.

### Cables



**25-66431-01R**

**Interconnection Cable**

(12.6 Inch). Connects Cradles to each other to run off one power supply (PWRS-14000-241R). Daisy Chain max = 6 Terminals per



**CBL-MC18-EXINT1-01**

**Extension Cable**

Cradle Power Extension Cable. Connects cradle to interconnect cable in order to lengthen cable and allow for easier installation.



**CBL-MC18-USB1-01**

**USB Cable**

MC18 USB Client Communication. Cable for Cradle to the host system.

## Step 4b: Choose cradle connection method: Single Slot Cradles

### Step 1

Power Supply.



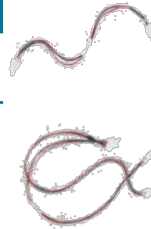
- Power Supply: **PWRS-14000-241R**
- AC Line Cord: **AC Line Cord Matrix** is located on the last page

### Step 2

Select one **DC Cable** to connect power supply to a maximum of 9 or 12 cradles depending on step 3.

#### DC Cable

12.6 Inch:  
25-66420-01R



#### DC "Y" Cable

19.5 Inch:  
25-66210-01R

1 Meter  
25-67592-01R

2 Meter  
CBL-MC18-Y2MET-01

### Step 3

Choose Number of Interconnection Cradles based on Charging Mode your required charging mode.

**Standard - 1.0 AMP:**

MAX: 12 Cradles/Devices

**Fast – 1.5 AMPS:**

MAX: 9 Cradles/Devices

### 3a. Standard Charging Mode

Choose the number of cradle interconnect cables required based on the table below.

**(12 Single Slot Cradles Max per Power Supply)**



**Cradle Interconnect Cable  
(12.6 inch): 25-66431-01R**

Number of Cradles	2	3	4	5	6	7	8	9	10	11	12
# of Interconnect Cables required	1	2	3	4	5	5	6	7	8	9	10

### 3b. Fast Charging Mode

Choose the number of cradle interconnect cables and power extension cables required based on the table below.

**(9 Single Slot Cradles Max per Power Supply)**



**Cradle Interconnect Cable  
(12.6 inch): 25-66431-01R**

Number of Cradles	2	3	4	5	6	7	8	9
# of Interconnect Cables required	1	2	3	4	5	5	6	7

## Step 4b: Choose cradle connection method: 3-Slot Cradles

### Step 1

Power Supply.



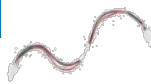
- **Power Supply:** **PWRS-14000-241R**
- **AC Line Cord:** **AC Line Cord Matrix** is located on the last page

### Step 2

Select one **DC Cable** to connect power supply to a maximum of 9 or 12 cradles depending on step 3.

#### DC Cable

12.6 Inch:  
25-66420-01R



#### DC “Y” Cable

19.5 Inch:  
25-66210-01R

1 Meter  
25-67592-01R

2 Meter  
CBL-MC18-Y2MET-01



### Step 3

Choose Number of Interconnection Cradles based on Charging Mode your required charging mode.

#### Standard - 1.0 AMP:

MAX: 4 x 3-Slot Cradles / 12 Devices

#### Fast – 1.5 AMPS:

MAX: 3 x 3-Slot Cradles / 9 Devices

## 3a. Standard Charging Mode

Choose the number of cradle interconnect cables and power extension cables required based on the table below.  
**(4 Connected Cradles Max)**



**Cradle Interconnect Cable (12.6 inch): 25-66431-01R**



**Interconnection Extension Cable: CBL-MC18-EXINT1-01**



**Cradle Interconnect Cable (12.6 inch): 25-66431-01R**



**Interconnection Extension Cable: CBL-MC18-EXINT1-01**

Number of Cradles	2	3	4
# of Interconnect Cables required	1	1	2
# of Extension Cables required	2	3	4

## 3b. Fast Charging Mode

Choose the number of cradle interconnect cables and power extension cables required based on the table below.  
**(3 Connected Cradles Max)**

Number of Cradles	2	3
# of Interconnect Cables required	1	1
# of Extension Cables required	2	3



## Step 5: Choose cradle accessories

### Keys and Tools

Used to mechanically unlock the MC18 Terminal from the 3-Slot & Single-Slot Cradles.



**Cradle Release Key (QTY-20)**      **KT-MC18-CKEY-20**

This tool can be reused to reboot the MC18 terminal by connecting and holding the pins on the tool to the terminal while holding down the scan key for 10 seconds



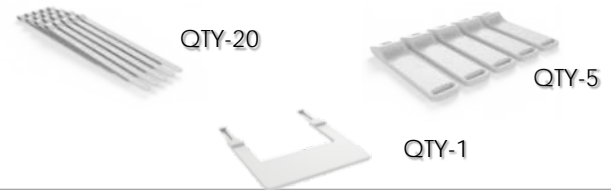
**Terminal Reboot Tool (5-PK)**      **KT-MC18-REBOOT-05**

Cradle Cover Removal Tool. The MC18 Cradle Cover Removal tool aids in the removal of the top housing of the 3-Slot Cradles.



**Cradle Cover Removal Tool (QTY-1)**      **KT-MC18-CTOOL-01**

### Deployment Kit



**KT-MC18-CSTKIT-01**

#### Mc18 Deployment Starter KIT

MC18 Deployment Starter KIT. Includes 20-pack of Release Keys (KT-MC18-CKEY-20), 5-pack of Terminal Reboot Tool (KT-MC18-REBOOT-05), and 1 Cradle Housing Tool (KT-MC18-CTOOL-01).

### Carholder Mounting KIT



**PSS-3SH01-00R**

#### Mc18 Carholder Mounting KIT

This holder allows mounting the MC17 mobile computer on a shopping cart.

## Step 6: Choose an AC line cord

Country	Three Wire Grounded AC Line Cord
Abu Dhabi	<b>50-16000-220R:</b> 1.8M long, CEE 7/7 plug.
Australia	<b>50-16000-217R:</b> 1.9M long, AS 3112 plug.
Bolivia	<b>50-16000-220R:</b> 1.8M long, CEE 7/7 plug.
Brazil	<b>50-16000-727R:</b> 18AWG, 250V, 16A, BR (3w).
China	<b>50-16000-217R:</b> 1.9M long, AS 3112 plug. <b>50-16000-257R:</b> 1.8M long, IEC 60320 C13 plug.
Dubai	<b>50-16000-220R:</b> 1.8M long, CEE 7/7 plug.
Egypt	<b>50-16000-220R:</b> 1.8M long, CEE 7/7 plug.
Europe	<b>50-16000-220R:</b> 1.8M long, CEE 7/7 plug.
Hong Kong	<b>50-16000-219R:</b> 1.8M long, BS1363 plug.
India	<b>50-16000-669R:</b> 1.9M long, BS 546 plug.
Iran	<b>50-16000-220R:</b> 1.8M long, CEE 7/7 plug.
Iraq	<b>50-16000-219R:</b> 1.8M long, BS1363 plug.

Country	Three Wire Grounded AC Line Cord
Israel	<b>50-16000-672R:</b> 1.9M long, S132 plug.
Italy	<b>50-16000-671R:</b> 1.8M long, CIE 23-16 plug.
Japan	<b>50-16000-218R:</b> 1.8M long, NEMA 1-15P plug.
Korea	<b>50-16000-220R:</b> 1.8M long, CEE 7/7 plug. <b>50-16000-256R:</b> 1.8M long, CEE7/7 plug.
Malaysia	<b>50-16000-219R:</b> 1.8M long, BS1363 plug.
New Guinea	<b>50-16000-217R:</b> 1.9M long, AS 3112 plug.
Russia	<b>50-16000-220R:</b> 1.8M long, CEE 7/7 plug.
Singapore	<b>50-16000-219R:</b> 1.8M long, BS1363 plug.
UK	<b>50-16000-219R:</b> 1.8M long, BS1363 plug.
US	<b>23844-00-00R:</b> 7.5 feet long. <b>50-16000-221R:</b> 1.8M long, USA NEMA 5-15P.
Vietnam	<b>50-16000-220R:</b> 1.8M long, CEE 7/7 plug.

## Optional custom branding

- Left and right branding
- Customisable for all our customers
- Vinyl peel and stick



Please consult your local Sales Representative for more details