

## M.2 NGFF SATA Enclosure | USB 3.1 (10Gbps)



*Actual product may vary from photos*

### **User Manual** **SKU#: SM21BMU31C3**

For the latest information and specifications visit  
[www.startech.com/SM21BMU31C3](http://www.startech.com/SM21BMU31C3)

# Compliance Statements

## FCC Compliance Statement

This equipment has been tested and found to comply with the limits for a Class B digital device, pursuant to part 15 of the FCC Rules. These limits are designed to provide reasonable protection against harmful interference in a residential installation. This equipment generates, uses and can radiate radio frequency energy and, if not installed and used in accordance with the instructions, may cause harmful interference to radio communications. However, there is no guarantee that interference will not occur in a particular installation. If this equipment does cause harmful interference to radio or television reception, which can be determined by turning the equipment off and on, the user is encouraged to try to correct the interference by one or more of the following measures:

- Reorient or relocate the receiving antenna
- Increase the separation between the equipment and receiver
- Connect the equipment into an outlet on a circuit different from that to which the receiver is connected
- Consult the dealer or an experienced radio/TV technician for help

## Industry Canada Statement

This Class B digital apparatus complies with Canadian ICES-003.

Cet appareil numérique de la classe [B] est conforme à la norme NMB-003 du Canada.

CAN ICES-3 (B)/NMB-3(B)

## Use of Trademarks, Registered Trademarks, and other Protected Names and Symbols

This manual may make reference to trademarks, registered trademarks, and other protected names and/or symbols of third-party companies not related in any way to StarTech.com. Where they occur these references are for illustrative purposes only and do not represent an endorsement of a product or service by StarTech.com, or an endorsement of the product(s) to which this manual applies by the third-party company in question. Regardless of any direct acknowledgement elsewhere in the body of this document, StarTech.com hereby acknowledges that all trademarks, registered trademarks, service marks, and other protected names and/or symbols contained in this manual and related documents are the property of their respective holders.

# Safety Statements

## Safety Measures

- Wiring terminations should not be made with the product and/or electric lines under power.
- Cables (including power and charging cables) should be placed and routed to avoid creating electric, tripping or safety hazards.

## Mesures de sécurité

- Les terminaisons de câblage ne doivent pas être effectuées lorsque le produit et/ou les câbles électriques sont sous tension.
- Les câbles (y compris les câbles d'alimentation et de chargement) doivent être placés et acheminés de façon à éviter tout risque électrique, de chute ou de sécurité

## 安全対策

- 電源が入っている状態の製品または電線の終端処理を行わないでください。
- ケーブル(電源ケーブルと充電ケーブルを含む)は、適切な配置と引き回しを行い、電気障害やつまづきの危険性など、安全上のリスクを回避するようにしてください。

## Misure di sicurezza

- I terminali dei fili elettrici non devono essere realizzate con il prodotto e/o le linee elettriche sotto tensione.
- I cavi (inclusi i cavi di alimentazione e di ricarica) devono essere posizionati e stesi in modo da evitare pericoli di inciampo, rischi di scosse elettriche o pericoli per la sicurezza.

## Säkerhetsåtgärder

- Montering av kabelavslutningar får inte göras när produkten och/eller elledningarna är strömförda.
- Kablar (inklusive elkablar och laddningskablar) ska dras och placeras på så sätt att risk för snubblingsolyckor och andra olyckor kan undvikas.

# Table of Contents

<b>Compliance Statements .....</b>	<b>1</b>
<b>Safety Statements .....</b>	<b>2</b>
<b>Product Diagram .....</b>	<b>4</b>
Front View .....	4
Internal View .....	5
<b>Product Information .....</b>	<b>6</b>
Package Contents .....	6
Requirements .....	6
<b>Installing a Hard Drive.....</b>	<b>7</b>
<b>Connecting the Hard Drive Enclosure .....</b>	<b>8</b>
<b>Formatting a Hard Drive .....</b>	<b>9</b>
<b>Disconnecting a Hard Drive.....</b>	<b>10</b>

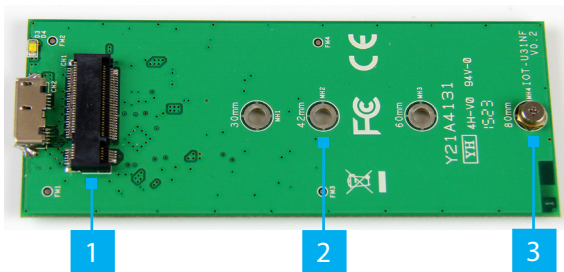
## Product Diagram

### Front View



<b>1</b>	<i>Drive Tray Screw</i>
<b>2</b>	<i>USB 3.1 Micro-B Port</i>
<b>3</b>	<i>Drive Tray Screw</i>

## Internal View



<b>1</b>	<i>M.2 NGFF Key B Drive Connector</i>
<b>2</b>	<i>Drive Length Adjustable Holes (x 4)</i>
<b>3</b>	<i>Drive-Mount Hardware (Screw and Standoff)</i>

## Product Information

### Package Contents

- M.2 NGFF SATA Enclosure - USB 3.1 x 1
- USB C to Micro B Cable x 1
- Assembly Screws x 4
- Set of M.2 Drive-Mount Hardware x 1
- Screwdriver x 1
- User Manual x 1

### Requirements

System requirements are subject to change. For the latest requirements, please visit [www.startech.com/SM21BMU31C3](http://www.startech.com/SM21BMU31C3).

- An available USB connector
- An M.2 NGFF SATA Solid State Drive (SSD)

## Installing a Hard Drive

**Warning!** *Hard Drives should be handled carefully, especially when they're transported. If you're not careful with your drives, you may lose data as a result. Make sure that you are properly grounded by wearing an anti-static strap when you install any computer component. If an anti-static strap isn't available, touch a large grounded metal surface for several seconds to discharge any built-up static electricity.*

1. Using the **Screwdriver** (included), remove the two **Drive Tray Screws** from the **Faceplate**.
2. Slide the **Drive Tray** out of the **Hard Drive Enclosure**.
3. Place your **Hard Drive** next to the **Drive Tray** measuring the length of the **Hard Drive** to determine the **Drive Length Hole** that match the length of the **Hard Drive** (30, 42, 60 or 80 mm).
4. Place the **Mounting Hardware** (Standoff) and **Nut** in the **Drive Length Hole** that matches the length of the **Hard Drive** and tighten them.
5. Gently slide the **M.2 Connector** on the **Hard Drive** into the **M.2 Connector** on the **Hard Drive Enclosure**.

**Note:** *The connector on your drive is keyed so that it only fits one way.*

6. Gently press the **Hard Drive** down aligning it with the **Standoff**.
7. Place the **Screw** into the **Standoff** and tighten the screw to secure the **Hard Drive** in place.



- Slide the **Drive Tray** back into the **Hard Drive Enclosure** so that the **USB 3.1 Micro-B Connector** is facing outward.
- Place the **Faceplate** over the **Connector**.
- Secure the **Faceplate** in place by inserting two **Drive Tray Screws** on either side of the **USB 3.1 Micro-B Port** on the front of the **Hard Drive Enclosure** and use the **Screwdriver** to tighten the **Drive Tray Screws**.

## Connecting the Hard Drive Enclosure

**Note:** *The **Hard Drive Enclosure** does not require an external power supply, as it receives enough power through the USB port on the **Host Computer**.*

After you have installed a **Hard Drive** in the **Hard Drive Enclosure**:

- Connect the **USB C to Micro B Cable** (included) to the **USB 3.1 Micro-B Port** on the **Hard Drive Enclosure** and to a USB 3.1 port on the **Host Computer**. The **Host Computer's OS** will automatically install the necessary drives.

**Note:** *Before you use the **Hard Drive**, you need to format it according to the requirements of your OS. For more information about how to do so, see the [Formatting a Hard Drive](#) section.*

## Formatting a Hard Drive

If you install a Hard Drive that already has data on it, after you insert the Hard Drive, it appears under **My Computer** or **Computer** with a drive letter assigned to it. If you install a brand-new Hard Drive that doesn't contain any data, you must format the Hard Drive.

If you use a computer that is running a version of Windows®, complete the following:

1. On the taskbar, click the **Windows** icon.
2. In the **Search** field, type **Disk Management**.
3. In the search results, click **Disk Management**.
4. A dialog window appears that asks you to initialize the Hard Drive. Depending on the version of Windows that you are running, you have the option to create either an MBR or a GPT disk.

**Note:** *GPT (GUID partition) is required for drives that are larger than 2 TB, but GPT isn't compatible with some earlier versions of operating systems. MBR is supported by both earlier and later versions of operating systems.*

5. Locate the disk that is labeled **Unallocated**. To confirm that the drive is the correct one, check the drive capacity.
6. Right-click the section of the window that says **Unallocated** and click **New Partition**.
7. To initialize the drive in the format of your choice, complete the on-screen instructions.

8. When the drive is successfully installed, it appears under **My Computer** or **Computer** with a drive letter assigned to it.

## Disconnecting a Hard Drive

If the computer that you are using is running a version of Windows, complete the following steps:

1. On the task bar notification area on your desktop, click the **Safely remove Hardware and Eject Media** icon.
2. Click the storage device that you want to remove.
3. When the message appears indicating that it's safe to remove the device, disconnect the drive.

**Warning!** *If you remove the drive before you receive the notification that it's safe to do so, you could experience lost or corrupted data.*

If the computer that you're using is running a version of Mac OS, complete the following steps:

1. Close any windows that list the contents of the drive.
2. On your desktop, click the **USB Storage** icon and drag it onto the **trash can** icon on your desktop.
3. Wait 5 seconds and then remove the drive from the duplicator dock.

## Warranty Information

This product is backed by a two-year warranty.

For further information on product warranty terms and conditions, please refer to [www.startech.com/warranty](http://www.startech.com/warranty).

## Limitation of Liability

In no event shall the liability of StarTech.com Ltd. and StarTech.com USA LLP (or their officers, directors, employees or agents) for any damages (whether direct or indirect, special, punitive, incidental, consequential, or otherwise), loss of profits, loss of business, or any pecuniary loss, arising out of or related to the use of the product exceed the actual price paid for the product.

Some states do not allow the exclusion or limitation of incidental or consequential damages. If such laws apply, the limitations or exclusions contained in this statement may not apply to you.

## Hard-to-find made easy. At StarTech.com, that isn't a slogan. It's a promise.

StarTech.com is your one-stop source for every connectivity part you need. From the latest technology to legacy products — and all the parts that bridge the old and new — we can help you find the parts that connect your solutions.

We make it easy to locate the parts, and we quickly deliver them wherever they need to go. Just talk to one of our tech advisors or visit our website. You'll be connected to the products you need in no time.

Visit [www.startech.com](http://www.startech.com) for complete information on all StarTech.com products and to access exclusive resources and time-saving tools.

StarTech.com is an ISO 9001 Registered manufacturer of connectivity and technology parts. StarTech.com was founded in 1985 and has operations in the United States, Canada, the United Kingdom and Taiwan servicing a worldwide market.

### Reviews

Share your experiences using StarTech.com products, including product applications and setup, what you love about the products, and areas for improvement.

#### StarTech.com Ltd.

45 Artisans Cres.  
London, Ontario  
N5V 5E9  
Canada

FR: [startech.com/fr](http://startech.com/fr)  
DE: [startech.com/de](http://startech.com/de)

#### StarTech.com LLP

2500 Creekside Pkwy.  
Lockbourne, Ohio  
43137  
U.S.A.

ES: [startech.com/es](http://startech.com/es)  
NL: [startech.com/nl](http://startech.com/nl)

#### StarTech.com Ltd.

Unit B, Pinnacle  
15 Gowerton Rd.,  
Brackmills  
Northampton  
NN4 7BW  
United Kingdom

IT: [startech.com/it](http://startech.com/it)  
JP: [startech.com/jp](http://startech.com/jp)