



## Product 215781



**215781 MultiStand** MultiStand support leg, for smaller surfpads. Length: 98 mm. Mounting Adapter and Screws Included. Black.

This support leg is to be used then you want to convert your current holder into a MultiStand. Easily change the existing tilt swivel to the support leg instead and you will have a completely new holder!

When using a MultiStand it is easier to carry the surfpad around with you. Convenient to use anywhere at home, in the car or in the office. Diminishes the risk to drop the device, since the stand is easier to grip than the device itself. You can use the stand in several angles, just adjust the position depending on area of use. Also adapted for use in the lap. Made of black ABS plastic.

You can attach the stand onto a wall, or any other place, by using the enclosed mounting adapter. If you want to be able to attach the stand onto more than one place, you can buy several mounting adapters (see item no 215461).

The support leg is 98 mm long and fits best with smaller surfpads.

Tablets should not be installed onto a car's dashboard. The ProClip is designed for installation of smaller devices (phones), not for large devices (tablets). If you want to place a tablet onto the car's dashboard, each combination of tablet-car must be examined in detail by you in order to determine if such an installation is possible in the specific case. Consideration should be given to the position and how firmly the ProClip is in place, as well as the size of the tablet you wish to use. Brodit will not give any recommendations for such installations. An installation of a tablet onto a vehicle's dashboard is always done on the customer's own responsibility. Brodit recommends to use tablets on the car's headrest, installed onto a Brodit headrest mount.

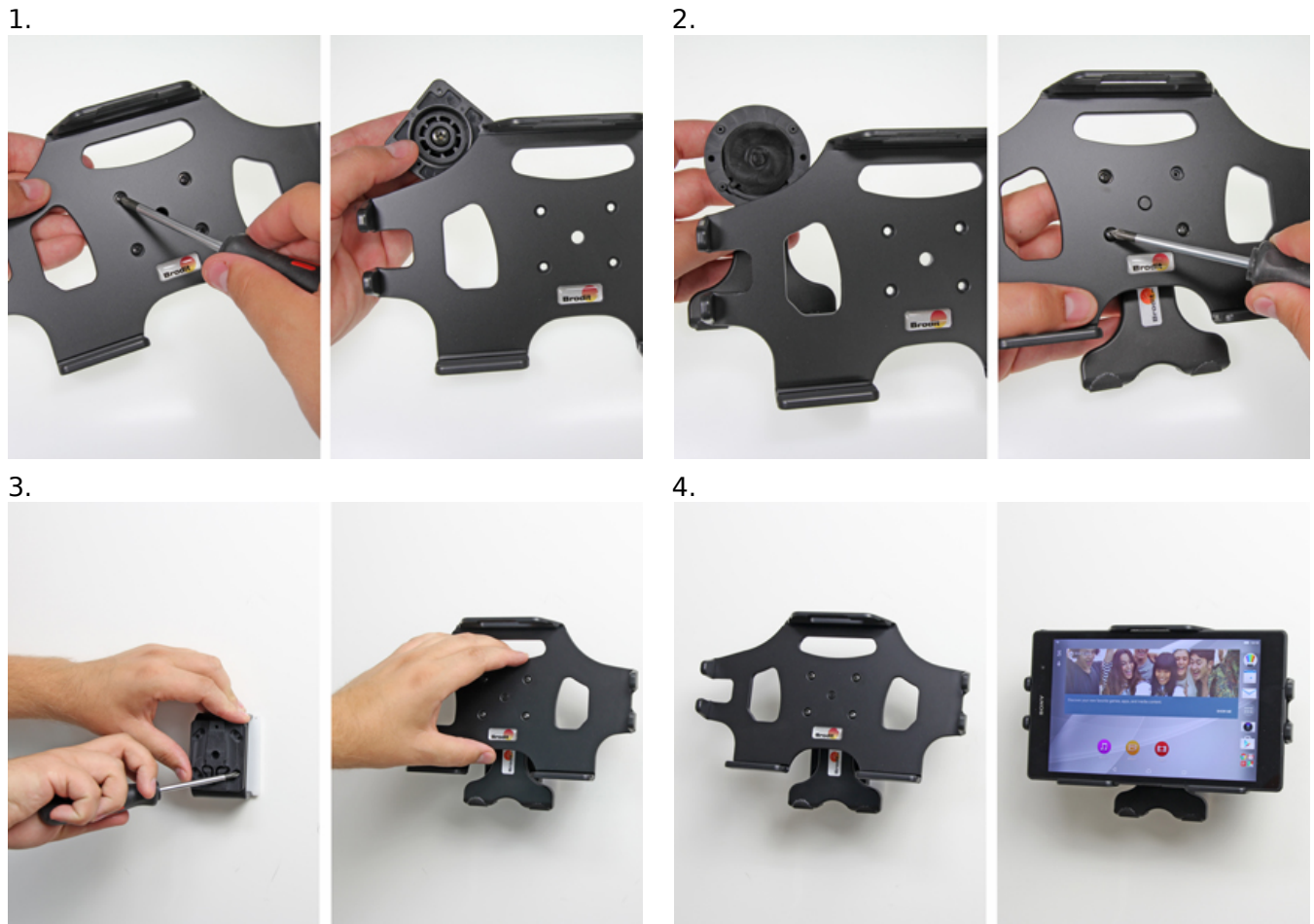
MultiStand film!

**Item no 215781 fits:**

, , (For all countries)  
Amazon Kindle Fire (For all countries)  
Amazon Kindle Fire HD 7.0 (For all countries)  
Amazon Kindle Fire HD 8.9 (For all countries)  
Amazon Kindle Fire HD 8.9 LTE (For all countries)  
Amazon Kindle Fire HDX 7.0 (For all countries)  
Amazon Kindle Fire HDX 8.9 (For all countries)  
Apple iPad Mini (For all countries)  
Apple iPad Mini 3 (For all countries)  
Apple iPad Mini 4 (For all countries)  
Apple iPad Mini Retina (For all countries)  
Asus Google Nexus 7 (For all countries)  
Asus Google Nexus 7 (2013) (For all countries)  
BlackBerry PlayBook (For all countries)  
Google Nexus 7 (For all countries)  
Google Nexus 7 (2013) (For all countries)  
HTC Flyer (For all countries)  
HTC Nexus 9 (For all countries)  
Huawei MediaPad (For all countries)  
Huawei MediaPad M1 8.0 (For all countries)  
Huawei MediaPad S7-301u (For all countries)  
Huawei MediaPad T1 8.0 (For all countries)  
Kindle Fire (For all countries)  
Kindle Fire HD 7.0 (For all countries)  
Kindle Fire HD 8.9 (For all countries)  
Kindle Fire HDX 8.9 (For all countries)  
Kindle HD 8.9 LTE (For all countries)  
LG G Pad 7.0 (For all countries)  
LG G Pad F 8.0 (For all countries)  
Mitac Ulmo (For all countries)  
Nexus 7 (For all countries)  
Nexus 7 (2013) (For all countries)  
Nexus 9 (For all countries)  
Pidion BP50 (For all countries)  
Samsung Galaxy Note 8.0 GT-N5110 (For all countries)  
Samsung Galaxy Note 8.0 GT-N5120 (For all countries)  
Samsung Galaxy Tab 2 7.0 (For all countries)  
Samsung Galaxy Tab 3 7.0 SM-T2100 (For all countries)  
Samsung Galaxy Tab 3 7.0 SM-T2110 (For all countries)  
Samsung Galaxy Tab 3 8.0 SM-T3100 (For all countries)  
Samsung Galaxy Tab 3 8.0 SM-T3150 (For all countries)  
Samsung Galaxy Tab 3 Lite (For all countries)  
Samsung Galaxy Tab 4 7.0 SM-T230 (For all countries)  
Samsung Galaxy Tab 4 7.0 SM-T231 (For all countries)  
Samsung Galaxy Tab 4 7.0 SM-T235 (For all countries)  
Samsung Galaxy Tab 4 8.0 SM-T335 (For all countries)  
Samsung Galaxy Tab 7.0 Plus GT-P6200 (For all countries)  
Samsung Galaxy Tab 7.7 GT-P6800 (For all countries)  
Samsung Galaxy Tab 8.9 GT-P7300 (For all countries)  
Samsung Galaxy Tab A 7.0 (For all countries)  
Samsung Galaxy Tab A 8.0 (For all countries)  
Samsung Galaxy Tab Active 8.0 SM-T365 (For all countries)  
Samsung Galaxy Tab E 8.0 (For all countries)  
Samsung Galaxy Tab GT-P1000 (For all countries)  
Samsung Galaxy Tab PRO 8.4 SM-T320 (For all countries)  
Samsung Galaxy Tab PRO 8.4 SM-T325 (For all countries)  
Samsung Galaxy Tab S 8.4 SM-T700 (For all countries)  
Samsung Galaxy Tab S 8.4 SM-T705 (For all countries)  
Samsung Galaxy Tab S2 8.0 (For all countries)  
Sony Xperia Tablet Z (For all countries)

Sony Xperia Z2 Tablet (For all countries)  
Verizon Ellipsis 7 (For USA)  
ViewSonic ViewPad 7 (For all countries)  
ZTE Light V9 (For all countries)  
ZTE Optik (For all countries)  
Zebra ET50 8.3 (For all countries)  
Zebra ET55 8.3 (For all countries)

## INSTALLATION INSTRUCTIONS



Please read all of the instructions and look at the pictures before attaching the holder.

1. Remove the tilt swivel from the holder by loosening the screws on the front of the holder.

2. Place the MultiStand support leg so it fits with the holes that were used to hold the tilt swivel into place. Fasten the MultiStand support leg using the enclosed screws.

3. To install the multi stand: Press the mounting adapter on the back side of the holder downward, so it slides out from the groove. Place the mounting adapter into desired position and screw it into place with the enclosed screws. Place the holder above the mounting adapter and press it downward so the mounting adapter fits into the groove. Press until you hear/feel it snap into place. To remove the holder: Pull the holder straight upward, away from the mounting adapter.

4. The holder is in place in horizontal position.