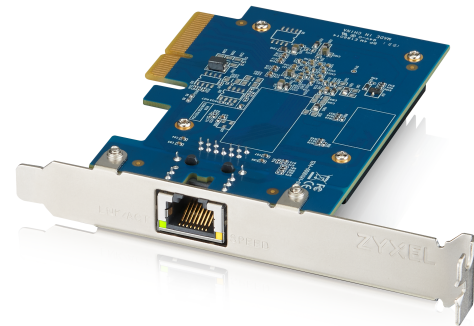


## XGN100C

10G Network Adapter PCIe Card with Single RJ-45 Port



### Quick Start Guide

ENGLISH | DEUTSCH | ESPAÑOL | FRANÇAIS  
ITALIANO

### Package Contents

- XGN100C
- Low Profile Bracket
- Quick Start Guide
- Declaration of Conformity  
Safety Warnings

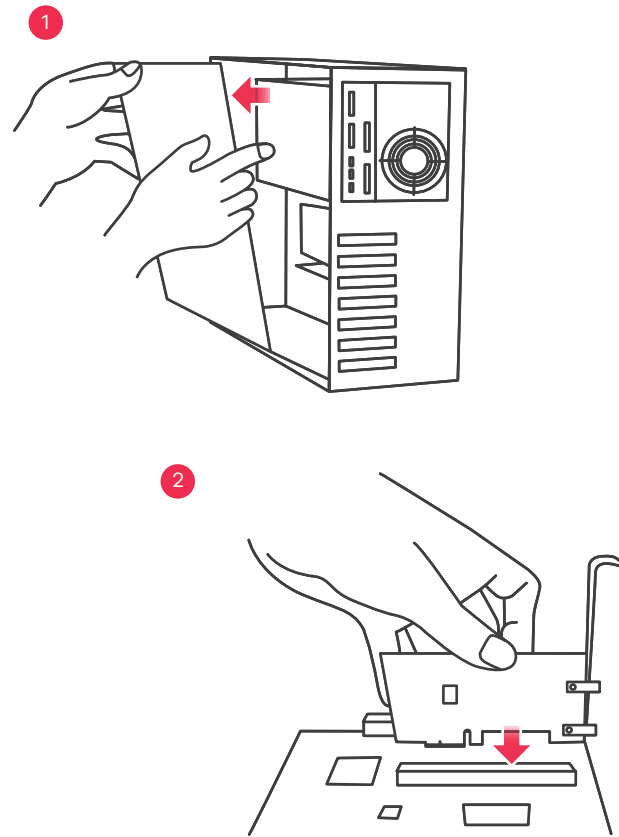
### Requirements

**A computer with an available PCI Express 2.0 slot using one of the following operating systems:**

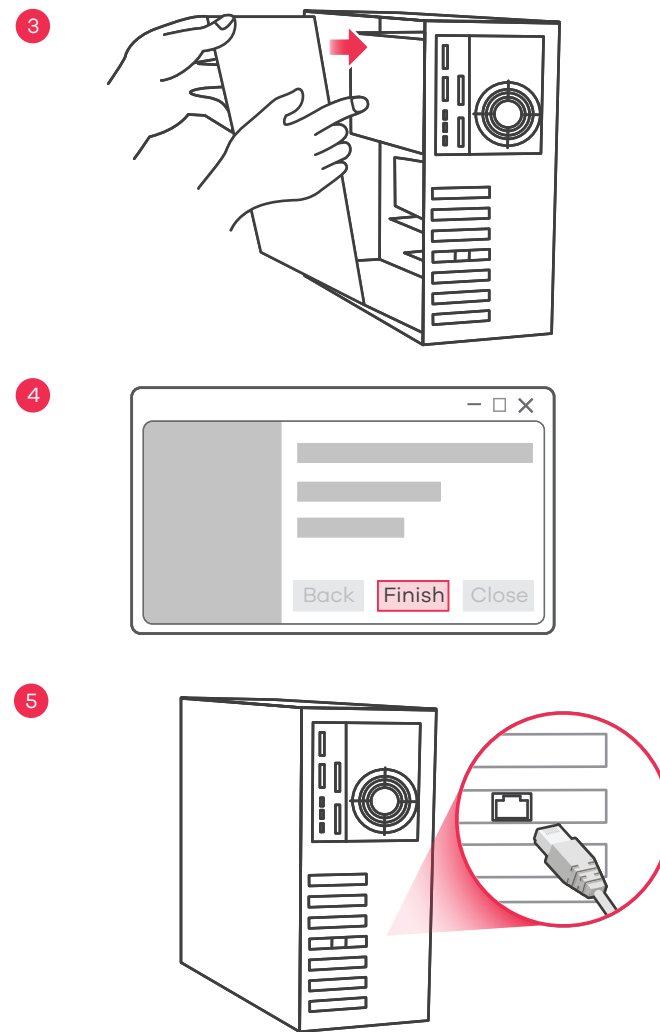
- Windows 7, 8.0, 8.1, 10 or Server 2012
- Linux 3.11, 4.13, 4.15, 3.16, 4.20 or 4.40

**Cat5e or better Ethernet cable**

### Hardware Installation



- EN** ① Turn off your computer, disconnect its power cord, and remove the computer case.  
② Insert the XGN100C firmly into an available PCIe slot, and then secure its back bracket.
- DE** ① Schalten Sie Ihren Computer aus, ziehen Sie das Netzkabel ab und entfernen Sie das Computergehäuse.  
② Stecken Sie den XGN100C fest in einen freien PCIe-Steckplatz und befestigen Sie dann die hintere Halterung.
- ES** ① Apague su ordenador, desconecte el cable de alimentación y retire la carcasa.  
② Introduzca bien el XGN100C en una ranura PCIe disponible y a continuación asegure su soporte posterior.
- FR** ① Éteignez votre ordinateur, débranchez son cordon d'alimentation et retirez le boîtier de l'ordinateur.  
② Insérez fermement le XGN100C dans un emplacement PCIe disponible, puis fixez son support arrière.
- IT** ① Spegni il computer, disconnetti l'alimentatore, e rimuovi la copertura del computer.  
② Inserisci l'XGN100C nell'inserto PCIe, premendo bene, e poi aggancia la staffa posteriore.



- EN** ③ Put back the computer case, connect the computer power cord, and turn the computer back on.  
④ A supported operating system will automatically install the driver, and prompt you when completed.  
⑤ Use a Cat5e or better Ethernet cable to connect the Ethernet port on the installed XGN100C to a suitable device such as a 2.5 Gbps / 5 Gbps router/AP or 10G switch, or 10G NAS.
- DE** ③ Bringen Sie das Computergehäuse wieder an, schließen Sie das Netzkabel des Computers an und schalten Sie den Computer wieder ein.  
④ Ein unterstütztes Betriebssystem installiert den Treiber automatisch und wird nach Fertigstellung eine Meldung anzeigen.  
⑤ Verwenden Sie ein Cat5e oder besseres Ethernet-Kabel, um den Ethernet-Anschluss des installierten XGN100C mit einem geeigneten Gerät wie einem 2,5 Gbps / 5 Gbps Router/AP oder 10G Switch oder 10G NAS zu verbinden.
- ES** ③ Vuelva a colocar la carcasa del ordenador, conecte el cable de alimentación y enciéndalo.  
④ Un sistema operativo compatible instalará automáticamente el controlador y le avisará cuando haya finalizado.  
⑤ Utilice un cable Ethernet Cat5e o superior para conectar el puerto Ethernet en el XGN100C instalado a un dispositivo adecuado, como un router/AP de 2,5 Gb/s o un conmutador 10G o 10G NAS.
- FR** ③ Remettez le boîtier de l'ordinateur, branchez le cordon d'alimentation de l'ordinateur et remettez l'ordinateur sous tension.  
④ Un système d'exploitation pris en charge installe automatiquement le pilote et vous avertit lorsque l'opération est terminée.  
⑤ Utilisez un câble Ethernet Cat5e ou supérieur pour connecter le port Ethernet du XGN100C installé à un périphérique approprié tel qu'un routeur/AP 2,5 Gbps / 5 Gbps ou un commutateur 10G ou un NAS 10G.
- IT** ③ Rimonta la copertura del computer, connetti l'alimentatore, e riaccendi il computer.  
④ Il sistema operativo installerà automaticamente il driver, e ti avviserà a installazione completata.  
⑤ Usa un cavo Ethernet Cat5e o migliore per connettere la porta Ethernet sull'XGN100C installato a un dispositivo adatto, come un router/AP da 2,5 Gbps / 5 Gbps o un interruttore 10G, o un NAS 10G.

### LEDs

SPEED	Green Amber	10 Gbps connection ready. 100 Mbps / 1 Gbps / 2.5 Gbps / 5 Gbps connection ready.
LNK/ACT	Green	<b>Blinking</b> - Data receiving/transmitting. <b>Steady On</b> - No data receiving/ transmitting. <b>Off</b> - No cable connection.

### Troubleshooting

- Make sure your computer is using a supported operating system.
- Manually install the card driver. If a supported operating system does not automatically install the driver, go to [https://www.zyxel.com/support/download\\_landing.shtml](https://www.zyxel.com/support/download_landing.shtml) and search for XGN100C. Download the driver, and install it.
- Make sure you are using a Cat5e or better Ethernet cable.
- For 10 Gbps speeds, make sure your computer is within range of the connected device.

Cable	Maximum Distance
Cat5e	33 m
Cat6	55 m
Cat6a	100 m

### FCC

This device complies with Part 15 of the FCC Rules. Operation is subject to the following two conditions:

- (1) This device may not cause harmful interference, and
- (2) This device must accept any interference received, including interference that may cause undesired operation.

Your Networking Ally



## Warranty Card

Thank you for purchasing a Zyxel product. Zyxel has a reputation for delivering high quality, high performance products and services to our customers. We recommend that you now visit the Zyxel website and register your product online. This will mean you can receive the latest firmware, drivers and product related information. If you still have further questions or enquiries related to the product, please contact our subsidiaries worldwide. Please note that warranty terms may vary by region. Full detailed information is available on our website, here: [http://www.zyxel.com/support/warranty\\_information.shtml](http://www.zyxel.com/support/warranty_information.shtml)

### Purchase Information

Zyxel Product Name:

Hardware Serial Number:

Date of Purchase:

(In certain countries, the warranty will be validated with seller's signature and stamp):

### Support Information

- USA** +1 800 255 4101  
[support@zyxel.com](mailto:support@zyxel.com)
- EU** <https://support.zyxel.eu>

#### EU Importer

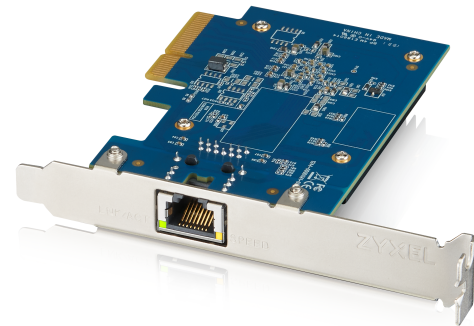
Zyxel Communications A/S  
 Gladsaxevej 378, 2. th. 2860 Søborg, Denmark  
<https://www.zyxel.com/dk/da/>

#### US Importer

Zyxel Communications, Inc  
 1130 North Miller Street Anaheim, CA 92806-2001  
<https://www.zyxel.com/us/en/>

## XGN100C

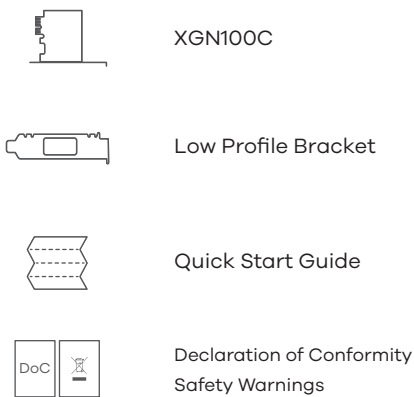
10G Network Adapter PCIe Card with Single RJ-45 Port



### Quick Start Guide

DANSK | NEDERLANDS | NORSK | SUOMI  
SVENSKA

### Package Contents



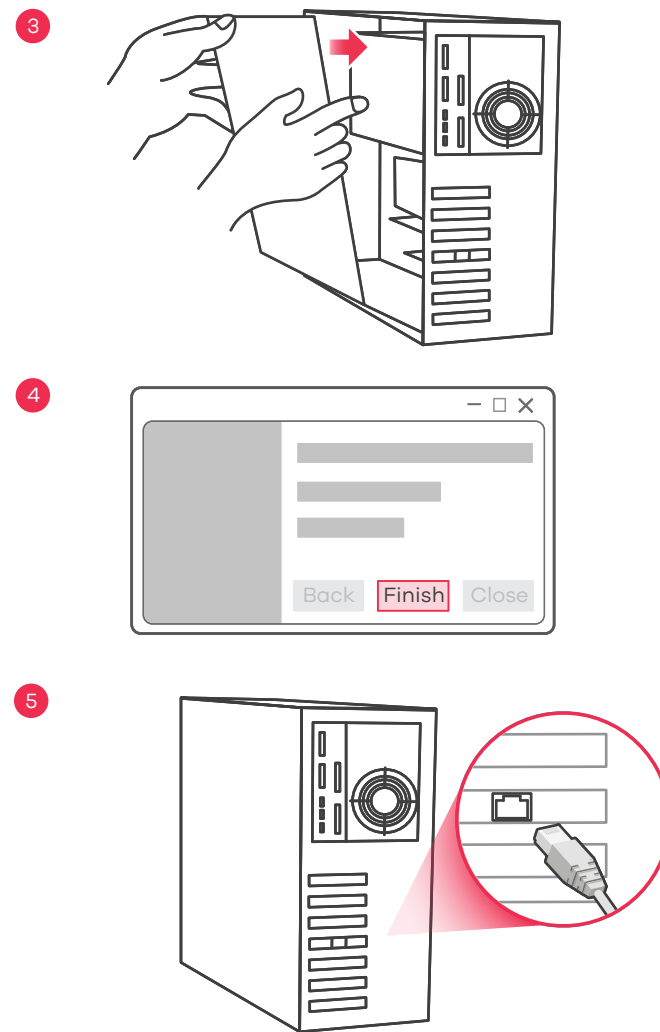
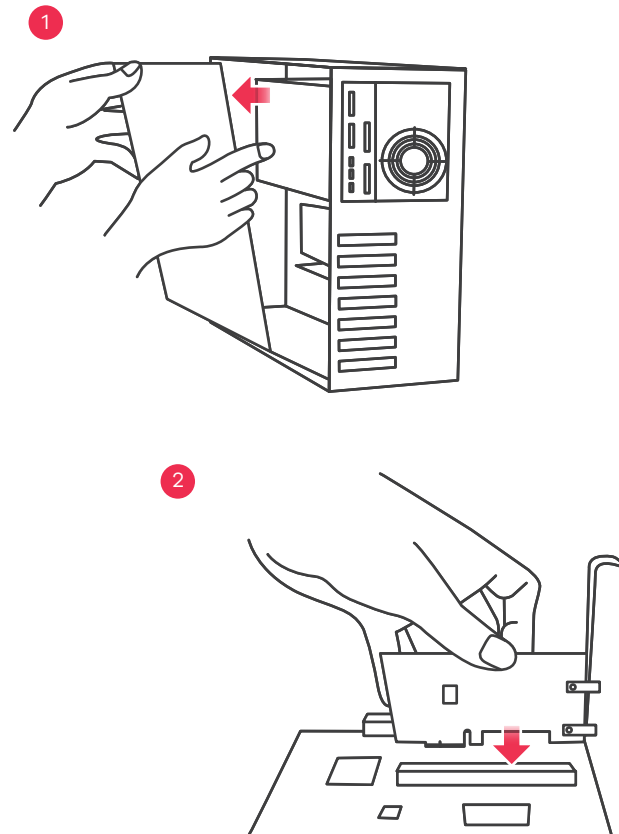
### Requirements

A computer with an available PCI Express 2.0 slot using one of the following operating systems:

- Windows 7, 8.0, 8.1, 10 or Server 2012
- Linux 3.11, 4.13, 4.15, 3.16, 4.20 or 4.40

Cat5e or better Ethernet cable

### Hardware Installation



- DK** ① Sluk for computeren, frakobl netledningen og fjern computerkabinettet.  
② Indsæt XGN100C solidt i et ledigt PCIe-slot og fastgør derefter dets bagbeslag.
- NL** ① Schakel de computer uit, ontkoppel de stroomkabel en verwijder de behuizing van de computer.  
② Plaats XGN100C stevig in een beschikbare PCIe sleuf en zet de achtersteun vast.
- NO** ① Slå av datamaskinen, koble fra strømledningen og fjern datamaskinens kabinett.  
② Sett inn XGN100C i et ledig PCIe-spor, og fest den bakre braketten.
- FI** ① Sammuta tietokone, irrota virtajohto ja poista tietokoneen kotelo.  
② Asenna XGN100C-kortti vapaaseen PCIe-paikkaan ja kiinnitä lukitussalpa.
- SE** ① Stäng av datorn, dra ur nätkabeln och avlägsna datorhöljet.  
② Sätt i XGN100C ordentligt på en ledig PCIe-plats och säkra därefter dess bakre fäste.

- DK** ③ Sæt kabinettet tilbage på plads, tilslut computerens netledning og tænd igen for computeren.  
④ Et understøttet operativsystem vil automatisk installere driveren, og give en meddelelse når det er gennemført.  
⑤ Brug et Cat5e- eller et bedre Ethernet-kabel til at tilslutte Ethernet-porten, på det installerede XGN100C, til en egnet enhed så som en 2,5 Gbps / 5 Gbps router/AP eller 10G switch eller 10G NAS.
- NL** ③ Plaats de behuizing van de computer terug, verbind de stroomkabel van de computer en schakel de computer weer aan.  
④ Een ondersteund besturingssysteem zal de driver automatisch installeren en je op de hoogte stellen als dit is beëindigd.  
⑤ Gebruik een Cat5e of betere Ethernet-kabel om de Ethernet-poort op de geïnstalleerde XGN100C met een geschikt apparaat zoals de 2,5 Gbps / 5 Gbps router/AP of 10G switch, of 10G NAS te verbinden.
- NO** ③ Sett på kabinettet igjen, koble til strømledningen og slå på datamaskinen igjen.  
④ Et støttet operativsystem vil automatisk installere driveren og varsle deg når installeringen er fullført.  
⑤ Bruk en Cat5e- eller bedre Ethernet-kabel til å etablere forbindelse mellom Ethernet-porten på den installerte XGN100C og en egnet enhet, for eksempel en 2,5 Gbps / 5 Gbps ruter/AP eller 10G-svitsj, eventuelt en 10G NAS.
- FI** ③ Sulje kotelo, liitä tietokoneen virtajohto ja käynnistä tietokone.  
④ Tuettu käyttöjärjestelmä asentaa laiteohjaimen automaattisesti ja ilmoittaa, kun asennus on valmis.  
⑤ Liitä tietokoneeseen asennetun XGN100C-kortin Ethernet-portti soveltuvaan verkkolaitteeseen, kuten 2,5/5 Gbps:n reitittimeen tai tukiasemaan, 10G-kytkimeen tai 10G-NAS-tallennuspalvelimeen, Cat5e-kaapelilla tai sitä paremmalla Ethernet-kaapelilla.
- SE** ③ Sätt tillbaka datorhöljet, anslut datorns nätsladd och slå på datorn igen.  
④ Ett operativsystem som stöds kommer automatiskt att installera drivrutinen och meddela när den är klar.  
⑤ Använd en Cat5e- eller en Ethernet-kabel (rekommenderas) för att ansluta Ethernet-porten på installerad XGN100C till en lämplig enhet, t.ex. en 2,5 Gbps/5 Gbps router/AP eller 10G-switch eller 10G NAS.

### LEDs

SPEED	Green Amber	10 Gbps connection ready. 100 Mbps / 1 Gbps / 2.5 Gbps / 5 Gbps connection ready.
LNK/ACT	Green	<b>Blinking</b> - Data receiving/transmitting. <b>Steady On</b> - No data receiving/ transmitting. <b>Off</b> - No cable connection.

### Troubleshooting

- Make sure your computer is using a supported operating system.
- Manually install the card driver. If a supported operating system does not automatically install the driver, go to [https://www.zyxel.com/support/download\\_landing.shtml](https://www.zyxel.com/support/download_landing.shtml) and search for XGN100C. Download the driver, and install it.
- Make sure you are using a Cat5e or better Ethernet cable.
- For 10 Gbps speeds, make sure your computer is within range of the connected device.

Cable	Maximum Distance
Cat5e	33 m
Cat6	55 m
Cat6a	100 m

### FCC

This device complies with Part 15 of the FCC Rules. Operation is subject to the following two conditions:

- (1) This device may not cause harmful interference, and
- (2) This device must accept any interference received, including interference that may cause undesired operation.

Your Networking Ally



## Warranty Card

Thank you for purchasing a Zyxel product. Zyxel has a reputation for delivering high quality, high performance products and services to our customers. We recommend that you now visit the Zyxel website and register your product online. This will mean you can receive the latest firmware, drivers and product related information. If you still have further questions or enquiries related to the product, please contact our subsidiaries worldwide. Please note that warranty terms may vary by region. Full detailed information is available on our website, here: [http://www.zyxel.com/support/warranty\\_information.shtml](http://www.zyxel.com/support/warranty_information.shtml)

### Purchase Information

Zyxel Product Name: \_\_\_\_\_

Hardware Serial Number: \_\_\_\_\_

Date of Purchase: \_\_\_\_\_

(In certain countries, the warranty will be validated with seller's signature and stamp):  
 \_\_\_\_\_

### Support Information

EU

📧 <https://support.zyxel.eu>

#### EU Importer

Zyxel Communications A/S  
Gladsaxevej 378, 2. th. 2860 Søborg, Denmark  
<https://www.zyxel.com/dk/da/>

#### US Importer

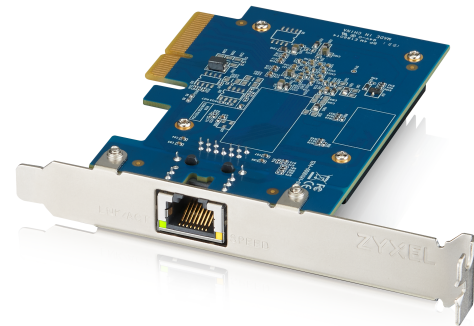
Zyxel Communications, Inc  
1130 North Miller Street Anaheim, CA 92806-2001  
<https://www.zyxel.com/us/en/>

Copyright ©2020 Zyxel Communications Corp. All Rights Reserved.



## XGN100C

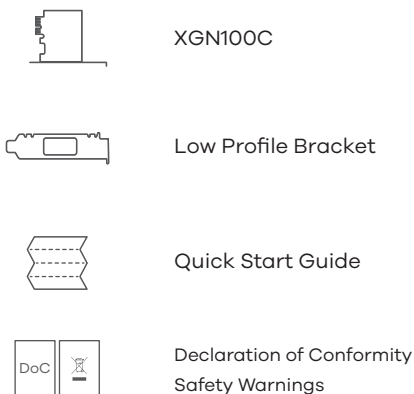
10G Network Adapter PCIe Card with Single RJ-45 Port



### Quick Start Guide

ČEŠTINA | MAGYAR | POLSKI | ROMÂNĂ  
SLOVENČINA

### Package Contents



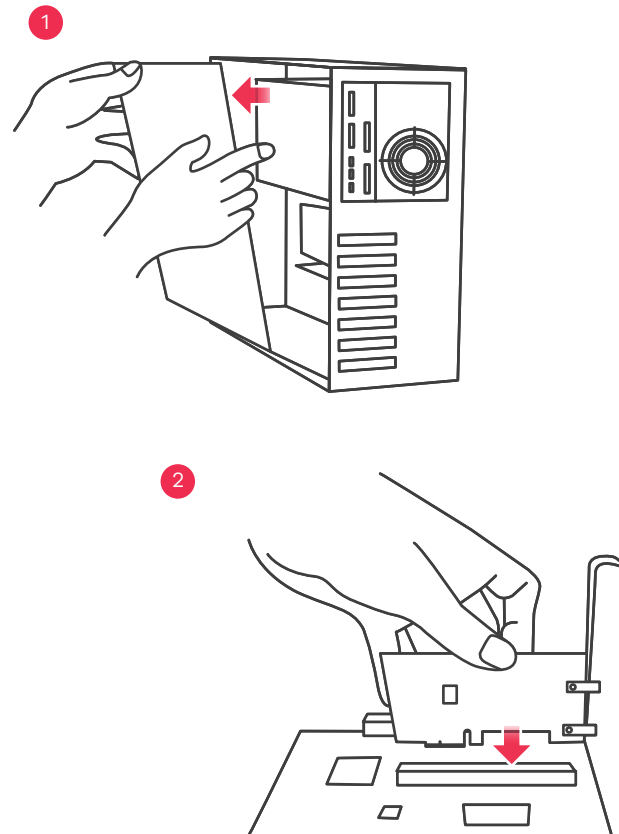
### Requirements

A computer with an available PCI Express 2.0 slot using one of the following operating systems:

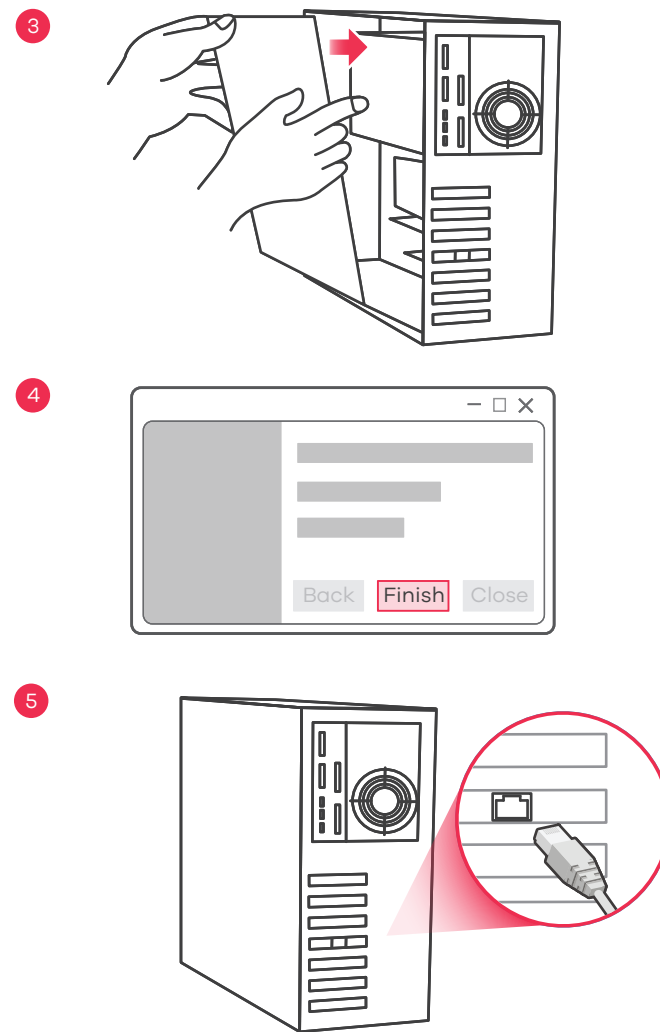
- Windows 7, 8.0, 8.1, 10 or Server 2012
- Linux 3.11, 4.13, 4.15, 3.16, 4.20 or 4.40

Cat5e or better Ethernet cable

### Hardware Installation



- CZ** ① Vypněte počítač, odpojte napájecí kabel a sundejte kryt počítače.  
② Zasuňte XGN100C napevno do volného slotu PCIe a zajistěte zadní podpěru.
- HU** ① Kapcsolja ki számítógépét, húzza ki a hálózati kábelt, majd távolítsa el a számítógép burkolatát.  
② Helyezze stabilan az XGN100C eszközt egy szabad PCIe-foglalatba, majd rögzítse a hátsó keretét.
- PL** ① Wyłącz komputer, odłącz przewód zasilający i zdejmij obudowę komputera.  
② Zdecydowanym ruchem umieść urządzenie XGN100C w dostępnym gnieździe PCIe, a następnie zabezpiecz tylny wspornik.
- RO** ① Opritiți computerul, scoateți cablul de alimentare și deschideți carcasa computerului.  
② Introduceți bine XGN100C într-un slot PCIe disponibil și fixați suportul de fixare de pe spatele lui.
- SK** ① Vypnite počítač, odpojte napájací kábel a demontujte kryt počítača.  
② Do voľnej štrbiny PCIe dôkladne zasuňte zariadenie XGN100C a zaisťte zadnú konzolu.



- CZ** ③ Nasadte kryt počítače, připojte napájecí kabel a zapněte počítač.  
④ Podporovaný operační systém automaticky nainstaluje ovladač a po dokončení zobrazí výzvu.  
⑤ Pomocí ethernetového kabelu Cat5e nebo lepšího připojte nainstalované zařízení XGN100C přes ethernetový port do vhodného zařízení, například routeru / přístupového bodu 2,5 Gb/s / 5 Gb/s nebo přepínače 10 G nebo 10 G NAS.
- HU** ③ Helyezze vissza a számítógép burkolatát, csatlakoztassa a hálózati kábelt, majd kapcsolja vissza a számítógépet.  
④ A támogatott operációs rendszer automatikusan telepíti az illesztőprogramot, és jelzi, ha kész.  
⑤ Használjon Cat5e vagy jobb Ethernet kábelt hogy összekösse a telepített XGN100C Ethernet csatlakozóját és az alkalmas eszközt, pl. 2,5 Gb/s / 5 Gb/s elválasztót/AP-t vagy 10G-s switchet vagy 10G-NAS-t.
- PL** ③ Załóż obudowę, podłącz przewód zasilający i ponownie włącz komputer.  
④ Obsługiwany system operacyjny automatycznie zainstaluje sterownik i wyświetli monit po zakończeniu operacji.  
⑤ Użyj kabla Ethernet Cat5e lub lepszego, aby podłączyć port Ethernet zainstalowanego urządzenia XGN100C do odpowiedniego urządzenia, takiego jak router/punkt dostępu 2,5 Gb/s / 5 Gb/s, przełącznik 10G lub NAS 10G.
- RO** ③ Încideți carcasa computerului, conectați cabul de alimentare al computerului și reporniți computerul.  
④ Un sistem de operare compatibil va instala automat driverul și vă va atenționa când această operație s-a finalizat.  
⑤ Utilizați un cablu Ethernet Cat5e sau superior și conectați portul Ethernet de pe XGN100C instalat la un dispozitiv corespunzător, cum ar fi un router 2,5 Gbps/5 Gbps / un AP sau un switch 10G sau un NAS 10G.
- SK** ③ Nasadte kryt počítača, pripojte napájací kábel počítača a počítač zapnite.  
④ Podporovaný operačný systém automaticky nainštaluje ovládač a po dokončení sa zobrazí výzva.  
⑤ Pomocou kábla Cat5e alebo lepšího kábla siete Ethernet prepojte port siete Ethernet na nainštalovanom zariadení XGN100C s vhodným zariadením, ako je 2,5 Gbps/5 Gbps smerovač/AP, 10G prepínač alebo 10G NAS.

### LEDs

SPEED	Green Amber	10 Gbps connection ready. 100 Mbps / 1 Gbps / 2.5 Gbps / 5 Gbps connection ready.
LNK/ACT	Green	<b>Blinking</b> - Data receiving/transmitting. <b>Steady On</b> - No data receiving/ transmitting. <b>Off</b> - No cable connection.

### Troubleshooting

- Make sure your computer is using a supported operating system.
- Manually install the card driver. If a supported operating system does not automatically install the driver, go to [https://www.zyxel.com/support/download\\_landing.shtml](https://www.zyxel.com/support/download_landing.shtml) and search for XGN100C. Download the driver, and install it.
- Make sure you are using a Cat5e or better Ethernet cable.
- For 10 Gbps speeds, make sure your computer is within range of the connected device.

Cable	Maximum Distance
Cat5e	33 m
Cat6	55 m
Cat6a	100 m

### FCC

This device complies with Part 15 of the FCC Rules. Operation is subject to the following two conditions:

- (1) This device may not cause harmful interference, and
- (2) This device must accept any interference received, including interference that may cause undesired operation.

Your Networking Ally



## Warranty Card

Thank you for purchasing a Zyxel product. Zyxel has a reputation for delivering high quality, high performance products and services to our customers. We recommend that you now visit the Zyxel website and register your product online. This will mean you can receive the latest firmware, drivers and product related information. If you still have further questions or enquiries related to the product, please contact our subsidiaries worldwide. Please note that warranty terms may vary by region. Full detailed information is available on our website, here: [http://www.zyxel.com/support/warranty\\_information.shtml](http://www.zyxel.com/support/warranty_information.shtml)

### Purchase Information

Zyxel Product Name: \_\_\_\_\_

Hardware Serial Number: \_\_\_\_\_

Date of Purchase: \_\_\_\_\_

(In certain countries, the warranty will be validated with seller's signature and stamp):  
 \_\_\_\_\_

### Support Information

EU

① <https://support.zyxel.eu>

#### EU Importer

Zyxel Communications A/S  
Gladsaxevej 378, 2. th. 2860 Søborg, Denmark  
<https://www.zyxel.com/dk/da/>

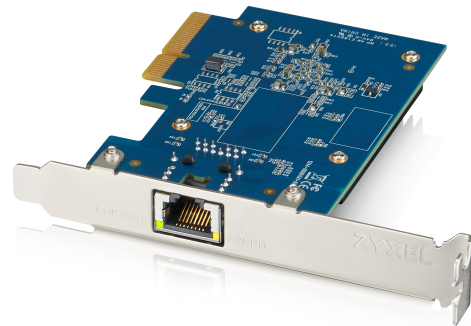
#### US Importer

Zyxel Communications, Inc  
1130 North Miller Street Anaheim, CA 92806-2001  
<https://www.zyxel.com/us/en/>

Copyright ©2020 Zyxel Communications Corp. All Rights Reserved.

## XGN100C

10G Network Adapter PCIe Card with Single RJ-45 Port



### Quick Start Guide

SLOVENŠČINA | TÜRK | БЪЛГАРСКИ | ภาษาไทย  
繁體中文

### Package Contents

- XGN100C
- Low Profile Bracket
- Quick Start Guide
- Declaration of Conformity Safety Warnings

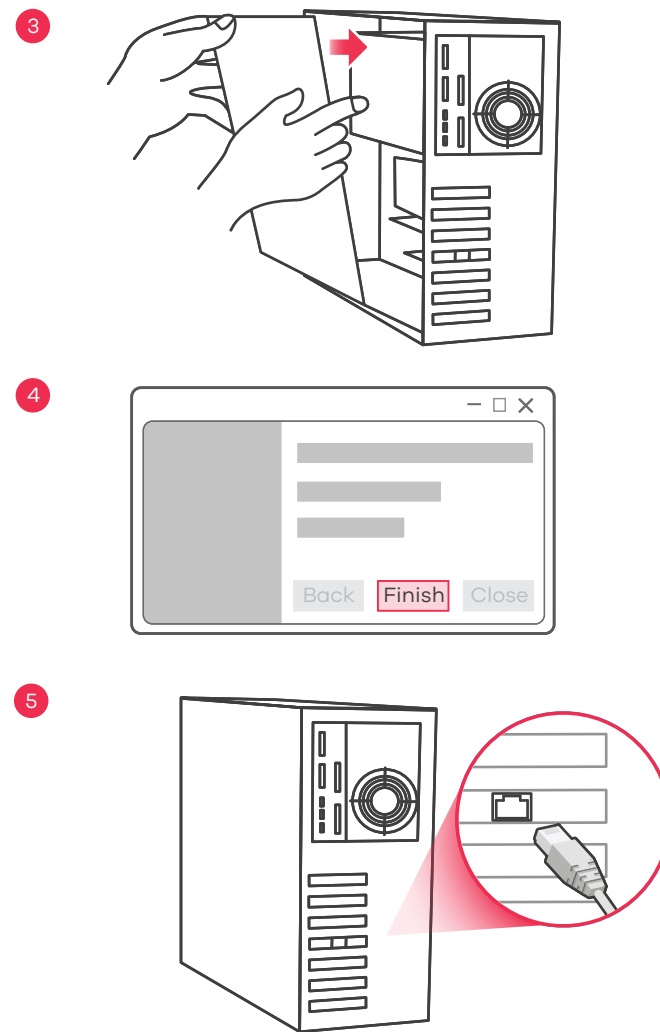
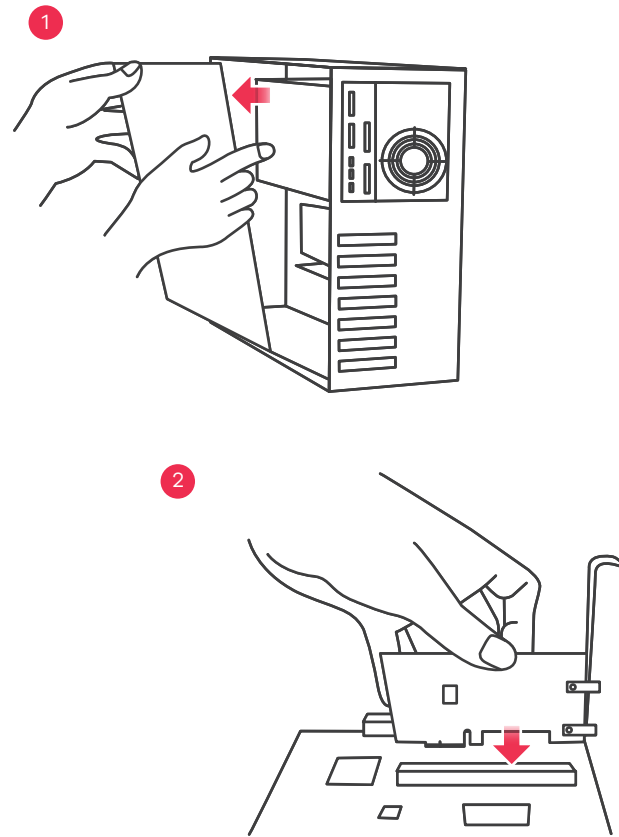
### Requirements

A computer with an available PCI Express 2.0 slot using one of the following operating systems:

- Windows 7, 8.0, 8.1, 10 or Server 2012
- Linux 3.11, 4.13, 4.15, 3.16, 4.20 or 4.40

Cat5e or better Ethernet cable

### Hardware Installation



- SI** ① Izključite računalnik, izklopite napajalni kabel in odstranite ohišje računalnika.  
② Vstavite XGN100C trdno v dostopno režo PCIe in potem pritrdite njegov zadnji nosilec.
- TR** ① Bilgisayarınızı kapatın, güç kablosunu çıkarın ve bilgisayar kasasının içini açın.  
② XGN100C'yi uygun bir PCIe yuvasına yerleştirin ve arka braketini sabitleyin.
- BG** ① Изключете компютъра, извадете захранващия кабел и отстранете кутията на компютъра.  
② Поставете продукта XGN100C в свободен PCIe слот и фиксирайте задната скоба.
- TH** ① ปิดเครื่องคอมพิวเตอร์, ถอดสายไฟและเปิดฝาเคสคอมพิวเตอร์ออก  
② ติดตั้ง XGN100C ลงในสล็อต PCIe ที่ว่างอยู่ กดให้แน่น จากนั้นยึดด้านหลังด้วยน็อต
- 繁中** ① 關閉您的電腦，移除電源線，打開機殼。  
② 將XGN100C安裝至PCIe插槽，並確保其完全插入並固定好。

- SI** ③ Vrnite ohišje računalnika, povežite napajalni kabel in vključite računalnik.  
④ Podprti operacijski sistem bo samodejno namestil gonilnik in vas bo obvestil, ko je končano.  
⑤ Uporabite Ethernet kabel Cat5e za povezovanje vrat Ethernet na nameščenem XGN100C s ustrežno naprav, kot je usmerjevalnik/AP 2,5 Gbps / 5 Gbps, stikalo 10G ali 10G NAS.
- TR** ③ Bilgisayar kasasını kapatın, güç kablosunu bağlayın ve bilgisayarı açın.  
④ Destekleyen bir işletim sistemi, sürücüyü otomatik olarak yükleyecek ve bittiğinde size bildirecektir.  
⑤ Takmış olduğunuz XGN100C üzerindeki Ethernet bağlantı noktasını 2,5 Gbps/5 Gbps yönlendirici/AP veya 10G switch ya da 10G NAS gibi uygun bir cihaza bağlamak için Cat5e veya daha iyi bir Ethernet kablosu kullanın.
- BG** ③ Поставете обратно кутията на компютъра, свържете захранващия кабел и включете компютъра отново.  
④ Поддържана операционна система автоматично ще инсталира драйвера и ще ви подкани, когато това е готово.  
⑤ Използвайте Cat5e или по-добър Ethernet кабел, за да свържете Ethernet порта на инсталирания XGN100C със съвместимо устройство като 2,5 Gbps / 5 Gbps рутер/AP или 10G превключвател, или 10G NAS.
- TH** ③ ปิดฝาเคสคอมพิวเตอร์กลับ ต่อสายไฟคอมพิวเตอร์แล้วเปิดคอมพิวเตอร์  
④ ระบบปฏิบัติการที่รองรับจะติดตั้งไดรเวอร์โดยอัตโนมัติและแจ้งให้คุณทราบเมื่อดำเนินการเสร็จ  
⑤ ใช้สายอีเทอร์เน็ต Cat5e หรือดีกว่า เพื่อเชื่อมต่อพอร์ตอีเทอร์เน็ตบน XGN100C ที่ติดตั้งไว้ เข้ากับอุปกรณ์ที่เหมาะสม เช่น เราเตอร์ 2,5 Gbps / 5 Gbps /AP หรือสวิตช์ 10G หรือ 10G NAS
- 繁中** ③ 重新裝回機殼，連接電源線，並將電腦開機。  
④ 電腦作業系統應會自動偵測及安裝驅動程式，並提示安裝已完成。  
⑤ 使用 Cat5e、Cat6或Cat6A 網路線將您的裝置連接到XGN100C的網路連接埠。

### LEDs

SPEED	Green Amber	10 Gbps connection ready. 100 Mbps / 1 Gbps / 2.5 Gbps / 5 Gbps connection ready.
LNK/ACT	Green	<b>Blinking</b> - Data receiving/transmitting. <b>Steady On</b> - No data receiving/ transmitting. <b>Off</b> - No cable connection.

### Troubleshooting

- Make sure your computer is using a supported operating system.
- Manually install the card driver. If a supported operating system does not automatically install the driver, go to [https://www.zyxel.com/support/download\\_landing.shtml](https://www.zyxel.com/support/download_landing.shtml) and search for XGN100C. Download the driver, and install it.
- Make sure you are using a Cat5e or better Ethernet cable.
- For 10 Gbps speeds, make sure your computer is within range of the connected device.

Cable	Maximum Distance
Cat5e	33 m
Cat6	55 m
Cat6a	100 m

### FCC

This device complies with Part 15 of the FCC Rules. Operation is subject to the following two conditions:

- (1) This device may not cause harmful interference, and
- (2) This device must accept any interference received, including interference that may cause undesired operation.

Your Networking Ally



## Warranty Card

Thank you for purchasing a Zyxel product. Zyxel has a reputation for delivering high quality, high performance products and services to our customers. We recommend that you now visit the Zyxel website and register your product online. This will mean you can receive the latest firmware, drivers and product related information. If you still have further questions or enquiries related to the product, please contact our subsidiaries worldwide. Please note that warranty terms may vary by region. Full detailed information is available on our website, here: [http://www.zyxel.com/support/warranty\\_information.shtml](http://www.zyxel.com/support/warranty_information.shtml)

### Purchase Information

Zyxel Product Name:

Hardware Serial Number:

Date of Purchase:

(In certain countries, the warranty will be validated with seller's signature and stamp):

### Support Information

**EU, Turkey and Russia**

✉ <https://support.zyxel.eu>

**Taiwan**

☎ + 886 2 2739 9889  
✉ [retail@zyxel.com.tw](mailto:retail@zyxel.com.tw)

**Thailand**

☎ + 66 2831 5315  
✉ [support@zyxel.co.th](mailto:support@zyxel.co.th)

**EU Importer**

Zyxel Communications A/S  
Gladsaxevej 378, 2. th. 2860 Søborg, Denmark  
<https://www.zyxel.com/dk/da/>

**US Importer**

Zyxel Communications, Inc  
1130 North Miller Street Anaheim, CA 92806-2001  
<https://www.zyxel.com/us/en/>

Copyright ©2020 Zyxel Communications Corp. All Rights Reserved.

