



C5BU-Z-SB-GY-xxx
C5BU-Z-SB-YL-xxx
C5BU-Z-SB-PU-xxx

C5BU-Z-SB-BL-xxx
C5BU-Z-SB-GN-xxx

C5BU-Z-SB-RD-xxx
C5BU-Z-SB-BK-xxx

Product Data Sheet

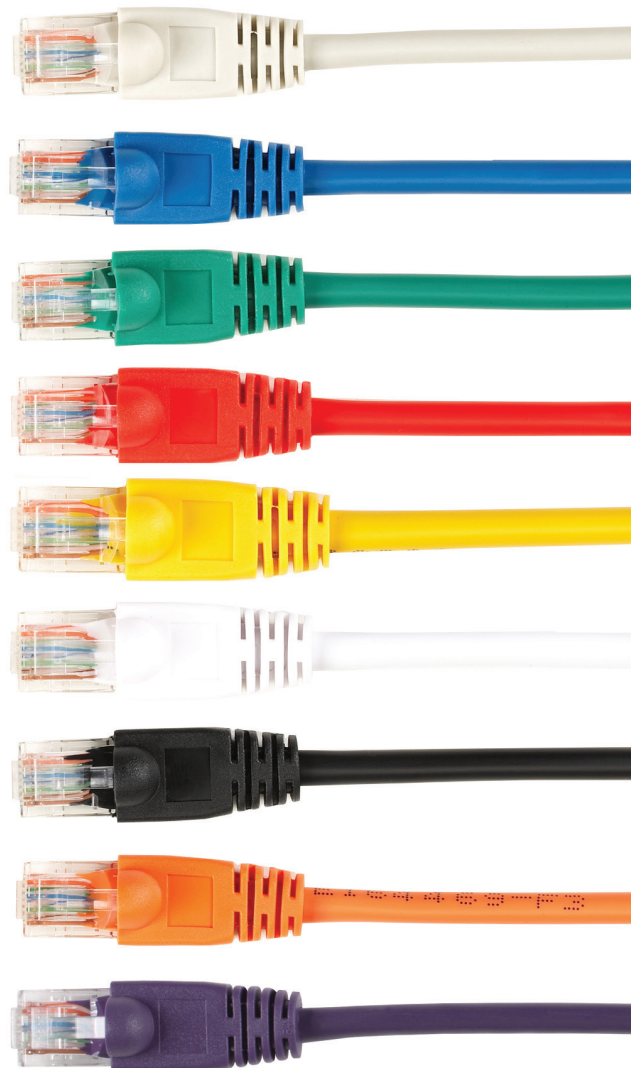
Black Box Connect CAT5e Patch Cables — Snagless Boots

Features

- 100% Copper Conductors
- Moulded Snagless Boots
- Meets or exceeds CAT5e specifications
- U/UTP Unshielded Twisted Pair Construction
- Low Smoke Zero Halogen
- Tested and verified with channel solution

General Specifications

Connectors	
Material	RJ-45 contacts, gold flush
Housing	Moulded snag proof with strain relief
Conductors	
Material	Stranded copper
Size	26 AWG
Construction	7 / 0.152 ± 0.008mm
Insulation	
Material	HDPE
Thickness	min at any point 0.15mm, max average 0.20mm
Diameter	0.75 ± 0.06mm
Sheath	
Material	LSOH
Flammability	IEC60332-1-2
Diameter	5.3 ± 0.2mm
Electrical Characteristics	
Spark Test	2000 ± 250V AC
Dielectric Strength	2500V DC / 3 seconds
Insulation Resistance	min 150 Mohms / km
Resistance	14.07 ohms / 100m @ 20°C
Capacitance	max 330 pF / 100m
Mutual Capacitance	max 5600 pF / 100m
Impedance	722 kHz: 102 ohms ± 15% 1~125 MHz: 100 ohms ± 15%



Black Box Connect CAT5e UTP LZ0H Patch Cables, snagless boots

Attenuation and Near End Cross-talk (NEXT)

Attenuation & NEXT	Attenuation max. (db/100m at 20°C)	NEXT db min	Power Sum (dB) min.
722 Hz	--	67*	64*
1 MHz	--	65*	62*
4 MHz	6.4*	56*	53*
8 MHz	8.9*	51*	48*
10 MHz	9.9*	50*	47*
16 MHz	12.3*	47*	44*
20 MHz	13.8*	45*	42*
25 MHz	16.0*	44*	41*
31.25 MHz	17.1*	42*	39*
62.5 MHz	25.6*	38*	35*
100 MHz	33.0*	35*	32*
125 MHz	37.4*	34*	31*

NOTE: Asterisk (*) values are information only.

The minimum NEXT coupling loss for any pair combination at room temperature is greater than the value determined using the formula:
 $NEXT (f \text{ MHz}) \geq NEXT (0.772) - 15 \log_{10} (f \text{ MHz} / 0.772)$.

Black Box Connect CAT5e UTP LZ0H Patch Cables, snagless boots

Black Box Connect CAT5e UTP LZ0H Patch Cables, snagless boots

Length	Color	Code
0.5 m	gray	C5BU-Z-SB-GY-00M5
1 m	gray	C5BU-Z-SB-GY-01M
2 m	gray	C5BU-Z-SB-GY-02M
3 m	gray	C5BU-Z-SB-GY-03M
5 m	gray	C5BU-Z-SB-GY-05M
7.5 m	gray	C5BU-Z-SB-GY-07M5
10 m	gray	C5BU-Z-SB-GY-10M
0.5 m	blue	C5BU-Z-SB-BL-00M5
1 m	blue	C5BU-Z-SB-BL-01M
2 m	blue	C5BU-Z-SB-BL-02M
3 m	blue	C5BU-Z-SB-BL-03M
5 m	blue	C5BU-Z-SB-BL-05M
7.5 m	blue	C5BU-Z-SB-BL-07M5
10 m	blue	C5BU-Z-SB-BL-10M
0.5 m	black	C5BU-Z-SB-BK-00M5
1 m	black	C5BU-Z-SB-BK-01M
2 m	black	C5BU-Z-SB-BK-02M
3 m	black	C5BU-Z-SB-BK-03M
5 m	black	C5BU-Z-SB-BK-05M
7.5 m	black	C5BU-Z-SB-BK-07M5
10 m	black	C5BU-Z-SB-BK-10M
0.5 m	green	C5BU-Z-SB-GN-00M5
1 m	green	C5BU-Z-SB-GN-01M
2 m	green	C5BU-Z-SB-GN-02M
3 m	green	C5BU-Z-SB-GN-03M
5 m	green	C5BU-Z-SB-GN-05M
7.5 m	green	C5BU-Z-SB-GN-07M5
10 m	green	C5BU-Z-SB-GN-10M

Length	Color	Code
0.5 m	red	C5BU-Z-SB-RD-00M5
1 m	red	C5BU-Z-SB-RD-01M
2 m	red	C5BU-Z-SB-RD-02M
3 m	red	C5BU-Z-SB-RD-03M
5 m	red	C5BU-Z-SB-RD-05M
7.5 m	red	C5BU-Z-SB-RD-07M5
10 m	red	C5BU-Z-SB-RD-10M
0.5 m	yellow	C5BU-Z-SB-YL-00M5
1 m	yellow	C5BU-Z-SB-YL-01M
2 m	yellow	C5BU-Z-SB-YL-02M
3 m	yellow	C5BU-Z-SB-YL-03M
5 m	yellow	C5BU-Z-SB-YL-05M
7.5 m	yellow	C5BU-Z-SB-YL-07M5
10 m	yellow	C5BU-Z-SB-YL-10M
0.5 m	purple	C5BU-Z-SB-PU-00M5
1 m	purple	C5BU-Z-SB-PU-01M
2 m	purple	C5BU-Z-SB-PU-02M
3 m	purple	C5BU-Z-SB-PU-03M
5 m	purple	C5BU-Z-SB-PU-05M
7.5 m	purple	C5BU-Z-SB-PU-07M5
10 m	purple	C5BU-Z-SB-PU-10M