

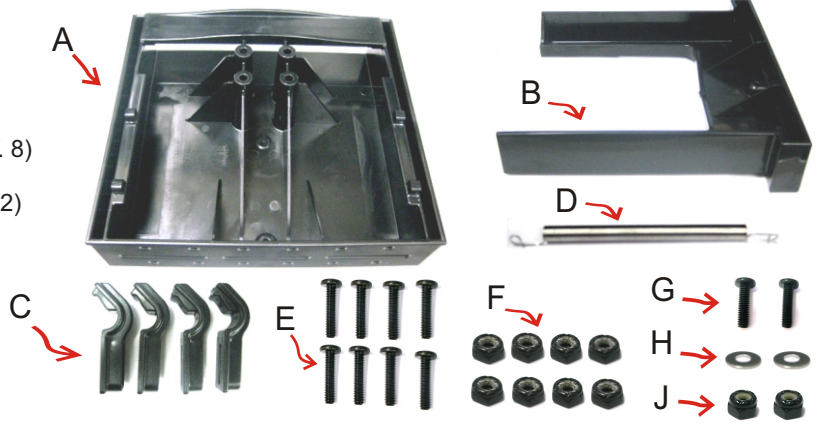
RAM® TOUGH-TRAY™ ASSEMBLY INSTRUCTIONS

PARTS INDEX

- A. RAM LAPTOP TRAY HOUSING (QTY. 1)
- B. RAM LAPTOP TRAY SLIDE (QTY. 1)
- C. RAM RETAINING SIDE ARMS (QTY. 4)
- D. SPRING (QTY. 1)
- E. #10-24 X 7/8" LONG PAN HEAD MACHINE SCREWS (QTY. 8)
- F. #10-24 STAINLESS STEEL THIN NYLOCK NUTS (QTY. 8)
- G. #8-32 X 5/8" LONG PAN HEAD MACHINE SCREWS (QTY. 2)
- H. #10 STAINLESS STEEL FLAT WASHERS (QTY. 2)
- J. #8-32 STAINLESS STEEL NYLOCK NUTS (QTY. 2)

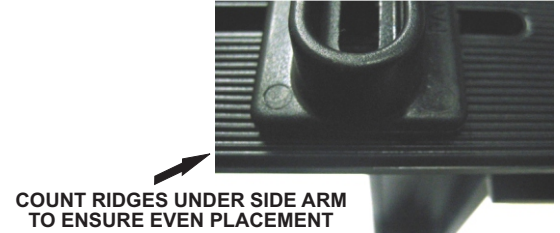
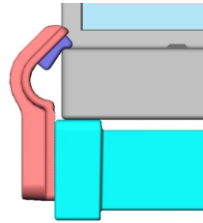
TOOLS NEEDED

- PHILLIPS HEAD SCREWDRIVER
- 3/8" OPEN END WRENCH (OR ADJUSTABLE WRENCH)
- PEN OR PENCIL



1. PLACE YOUR LAPTOP ON (B) SLIDE. POSITION TWO (C) SIDE ARMS AGAINST SLIDE SO THAT RUBBER KEEPERS REST ON LAPTOP. COUNT THE VISIBLE RIDGES UNDER BOTH SIDE KEEPERS TO ENSURE EVEN PLACEMENT.

SOME LAPTOPS REQUIRE FRONT AND REAR SIDE ARMS TO BE SET AT DIFFERENT HEIGHTS.



2. REMOVE YOUR LAPTOP. ATTACH SAME SIDE ARMS TO (B) SLIDE USING (E) SCREWS AND (F) NUTS. SIDE ARMS MUST BE POSITIONED ABOVE SAME NUMBER OF RIDGES AS COUNTED IN STEP 1. TO AVOID BLOCKING PORTS ON YOUR LAPTOP, POSITION ARMS APPROPRIATELY BEFORE TIGHTENING. HOLD NUT IN PLACE WITH WRENCH, AND TIGHTEN WITH SCREWDRIVER.



(E) SCREWS ON OUTSIDE

REPEAT STEPS 1 AND 2 FOR (A) HOUSING PORTION OF TOUGH-TRAY.

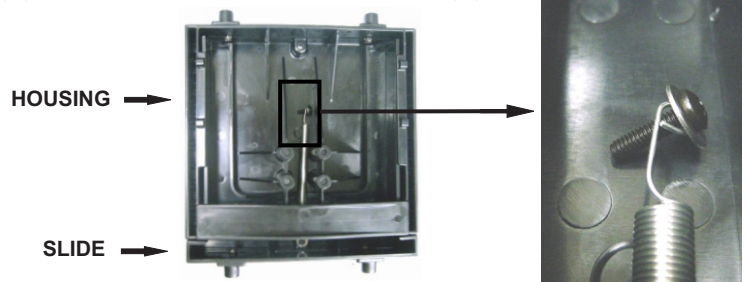
3. ATTACH (D) SPRING TO (B) SLIDE USING (G) SCREW, (H) WASHER AND (J) NUT AS SHOWN.



(B) SLIDE

POSITION (J) NUT ON OPPOSITE SIDE

4. INSERT (B) SLIDE INTO (A) HOUSING. INSERT (G) SCREW AND (H) WASHER THROUGH OPEN END OF (D) SPRING.

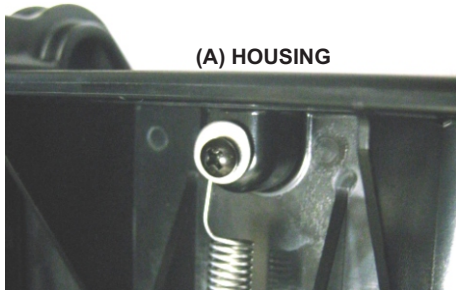


HOUSING

SLIDE

5. EXPAND (D) SPRING UNTIL SCREW FROM STEP 4 ALIGNS WITH HOLE IN TRAY HOUSING. TIGHTEN SCREW THROUGH HOLE WITH (J) NUT POSITIONED ON OPPOSITE SIDE.

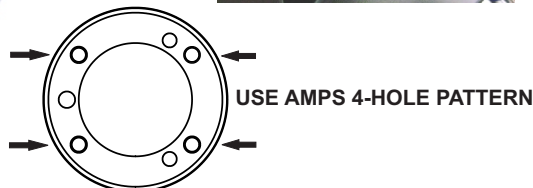
6. WHILE HOLDING TOUGH-TRAY SIDeways, INSERT (F) NUT INTO HEX HOLE OF TRAY. KEEP NUT POSITIONED CORRECTLY BY INSERTING WITH A PEN OR PENCIL. HOLDING NUT IN PLACE, TURN TRAY UPSIDE DOWN AND POSITION RAM-202 (INCLUDED IN VEHICLE MOUNT KIT) OVER 4 HOLES UNDER TRAY. SECURE (E) SCREW THROUGH RAM-202 ONTO (F) NUT UNDER TRAY, AND REPEAT FOR REMAINING 3 HOLES. TIGHTEN ALL SCREWS.



(A) HOUSING



RAM Mounting Systems
8410 Dallas Ave S
Seattle, WA 98108
Phone: (206) 763-8361
Fax: (206) 763-9615
www.rammount.com
support@rammount.com



RMR-INS-2343



Convert any RAM Laptop Mount into an iPad or other tablet mounting solution!



LIFETIME WARRANTY FOR ALL MOUNTING COMPONENTS

The exclusive NPI Lifetime Warranty states that all RAM mounting components and parts are warranted against defects in materials and workmanship for the life of the product or part. NPI's Lifetime Warranty covers the mount or its components only. The mounted device is not covered under the Lifetime Warranty and will not be replaced if damaged as a result of mount failure. This warranty is expressly limited to the persons in the United States, and all foreign countries who purchase RAM for resale or use in the ordinary course of the buyer's business. This warranty does not cover any product or part that has been abused, worn out, heated, ground or otherwise altered, used for a purpose other than that for which it was intended, or used in a manner inconsistent with any instructions regarding its use.



Visit WWW.RAMMOUNT.COM for more information on the NPI Lifetime Warranty.

RAM TOUGH-TRAY ACCESSORIES



RAM SCREEN-SUPPORT SYSTEM
SECURE YOUR LAPTOP MONITOR FOR VARIOUS VIEWING ANGLES WHILE YOUR VEHICLE IS IN MOTION.
P/N: **RAM-234-S2U**



RAM ADJUSTABLE KNOB KIT
QUICKLY AND EASILY FIT YOUR TOUGH-TRAY FOR ANY COMPATIBLE LAPTOP WITHOUT THE USE OF TOOLS.
P/N: **RAM-234-AK1U**



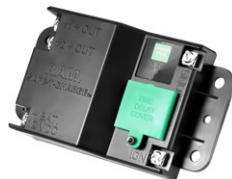
RAM SECURE-N-MOTION KIT
KEEP YOUR LAPTOP SAFE UNDER THE MOST ADVERSE CONDITIONS, USING A KEYED LOCKING KNOB FOR TRAY ADJUSTMENT.
P/N: **RAM-234-SNMU**



FLAT SIDE KEEPERS FOR TOUGH-TRAY
ALLOW YOUR LAPTOP TO CLOSE COMPLETELY WHILE SECURE IN YOUR TOUGH-TRAY.
P/N: **RAM-234K1-4U**



RAM TOUGH-HUB
CONNECT UP TO 6 DEVICES TO YOUR LAPTOP, CAPABLE OF OPERATING WHEN VEHICLE IS SHUT OFF WITH A TIMED DISCONNECT FEATURE.
P/N: **RAM-234-HUB1U**



RAM SAFE-T-CHARGE SYSTEM
PROTECT YOUR CAR BATTERY BY PRESETTING AN AUTOMATIC SHUT DOWN TO YOUR DEVICES WHEN SENSING A CRITICAL DROP IN DC VOLTAGE.
P/N: **RAM-234-VCP1U**



RAM LAPTOP SCREEN DISABLER
AUTOMATICALLY DISABLES LAPTOP SCREEN WHILE VEHICLE IS IN MOTION. ELIMINATE ANY RISK OF DISTRACTION AND INCREASE THE SAFETY OF YOUR MOBILE WORKFORCE.
P/N: **RAM-234-SD1U**



RAM POWER ADAPTER
6 VOLTAGE INPUTS ALLOW YOU TO KEEP YOUR DEVICE POWERED PROPERLY WITH AN INPUT RANGE OF 12 TO 28 VOLTS DC.
P/N: **RAM-234-PB1U**



TRAY MOUNT FOR RAM MULTI-PAD
CONVENIENTLY MOUNT RAM MULTI-PAD TO THE SIDE OF RAM TOUGH-TRAY TO USE AS A HARD WRITING SURFACE OR MOUSE PAD.
P/N: **RAM-B-102-MP1U**



TRAY MOUNT FOR SMARTPHONE
CONVENIENTLY MOUNT YOUR SMARTPHONE TO THE SIDE OF YOUR RAM TOUGH-TRAY.
P/N: **RAM-B-102-UN7U**



RAM USB COMPUTER LIGHT
11.5" LONG FLEXIBLE ARM PROVIDES THE PERFECT LIGHTING SOLUTION FOR YOUR LAPTOP WHEN IN A VEHICLE.
P/N: **RAM-234-LU**



RAM-POWER CADDY
ALLOWS YOUR POWER ADAPTERS, EXTERNAL HARD DRIVES, AND OTHER DEVICES TO REMAIN CLOSE TO YOUR LAPTOP WHILE MOUNTED.
P/N: **RAM-234-5U**