

Item Number
RAM-VB-169

RAM No-Drill™ Seat Bases

RAM Mounting Systems

Vehicle base for the
HONDA ACCORD (2008-2010)
SUBARU FORESTER (2006-2009)
SUBARU IMPREZA (2006-2010)
SUBARU LEGACY (2006-2009)
SUBARU OUTBACK (2006-2009)

SPECIFICATIONS

Placement

Passenger side on the floor, under front seat

Drilling Required

No - uses existing seat bolts

Seat Configuration

Bucket

Pole or Pedestal

Sold Separately

Construction/Finish

Steel/Black Powdercoat

Weight

7 lbs.

Note: Stand offs and longer bolts are provided for Honda Accord installation to allow base to clear air duct.

Features

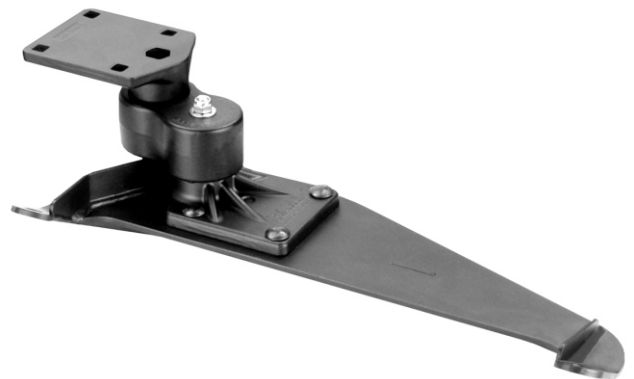
Installs in minutes with no drilling required
Low profile keeps mount away from passenger leg space

Misc.

Rock solid construction
Lifetime warranty



Shown In Use



RAM-VB-169

RAM Mounting Systems
8410 Dallas Ave S
Seattle, WA 98108
Phone: (206) 763-8361
Fax: (206) 763-9615
www.rammount.com
support@rammount.com



RMR-INS-VB-169

Item Number
RAM-VB-169

RAM No-Drill™ Seat Bases

RAM Mounting Systems

Vehicle base for the
HONDA ACCORD (2008-2010)
SUBARU FORESTER (2006-2009)
SUBARU IMPREZA (2006-2010)
SUBARU LEGACY (2006-2009)
SUBARU OUTBACK (2006-2009)

INSTALLATION INSTRUCTIONS

Note that stand offs and longer bolts are used for Honda Accord. Place the stand offs in between the No-Drill™ base and the seat frame legs. Pass the longer bolts provided through the base, then the stand offs, and start the thread by hand into the floor board. Once started, use a socket wrench to fully tighten. Stand offs are so base clears air duct.

1. Move the passenger seat back to its rearmost position and remove the front seat rail bolts.
2. Without moving the seat, place the No-Drill™ base over the front of the seat frame legs.
3. Align the holes in the base with those of the seat frame legs. The pedestal platform should be near the console.
4. Re-install the seat bolts and fully tighten.

RAM Mounting Systems
8410 Dallas Ave S
Seattle, WA 98108
Phone: (206) 763-8361
Fax: (206) 763-9615
www.rammount.com
support@rammount.com



RMR-INS-VB-169