

# Portable Canvio Advance

Secured in Style. Take Life Anywhere.









4 2 1  
TB TB TB

Color




EMEA Region, Toshiba Storage Solutions - The Canvio Advance is a solid storage solution for anyone who wants quality and style at great value. Up to 4 TB of high-performance storage is packed into a stylish casing. It comes in four different colors to match personal preferences. As a real value add, it includes a backup software package and easy-to-configure security software to keep your data safe.



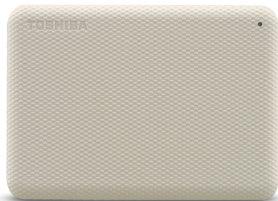
-  2.5" external hard drive
-  Textured finish
-  SuperSpeed USB 3.2 Gen 1
-  USB-powered
-  Auto-backup software
-  Toshiba Storage Security Software

## Manual

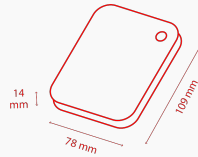
[Canvio-Advance UM.pdf](#) 

## Tools

[ToshibaStorageDiagnosticTool 1.30.8920.zip](#) 



# Product Specifications



## Basic Specifications

<b>Interface</b>	USB 3.2 Gen 1 (USB 2.0 compatible)
<b>Max. transfer rate</b>	~ 5.0 Gbit/s
<b>File system</b>	NTFS (for MS Windows) Requires reformatting for Mac OS
<b>Power</b>	USB bus power (max. 900mA)
<b>System requirements</b>	Formatted NTFS for Microsoft® Windows® 10, Windows® 8.1. One free port of USB 3.2 Gen 1 or USB 2.0 Requires reformatting for macOS v11.5 / v11.2 / v10.15 / v10.14 / v10.13 / v10.12 / OS X v10.11

## Box Content

<b>Box Content</b>	Canvio Advance USB 3.2 Gen 1 Cable (Type A to Micro-B ) User's manual (pre-installed on the hard drive)
--------------------	---

## Physical

<b>Weight (approx.)</b>	1 TB, 2 TB: 149 g 4 TB: 217,5 g
<b>Dimensions</b>	1 TB, 2 TB: 78 x 109 x 14 mm 4 TB: 109 x 78 x 19 mm
<b>Enclosure</b>	Textured finish

## Features

<b>Password lock software</b>	Toshiba Storage Security Software (for download)
<b>Backup Software</b>	Toshiba Storage Backup Software (for download)

# Product Range

Part number	Capacity	Color
HDTCA40EK3CA	4 TB	Black
HDTCA40EW3CA	4 TB	Light beige
HDTCA40ER3CA	4 TB	Red
HDTCA40EG3CA	4 TB	Green
HDTCA20EK3AA	2 TB	Black
HDTCA20EW3AA	2 TB	Light beige
HDTCA20ER3AA	2 TB	Red
HDTCA20EG3AA	2 TB	Green
HDTCA10EK3AA	1 TB	Black
HDTCA10EW3AA	1 TB	Light beige
HDTCA10ER3AA	1 TB	Red
HDTCA10EG3AA	1 TB	Green

# Logistical Information:

Box dimensions	111 x 38 x 141
Box weight (gross)	227 g (1 TB / 2 TB); 300 g (4 TB)
Master carton dimensions	123 x 205 x 165 mm
Box weight (gross)	1,27 kg (1 TB / 2 TB); 1,63 kg ( 4 TB)
Boxes per master carton	5
Pallet dimensions	1150 x 1150 x 130 mm
Pallet weight (net)	22 kg
Units per pallet	1350

# Contact

**Toshiba Electronics Europe GmbH**

Hansaallee 181  
40549 Düsseldorf  
Germany