

**Need help for your product?**

Visit [Jabra.com/help/link950](https://Jabra.com/help/link950)

**Other inquiries:**

[Jabra.com/contact](https://Jabra.com/contact)



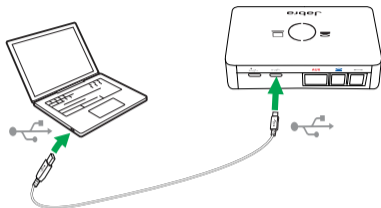
# GET STARTED

Jabra Link 950 USB-A/USB-C

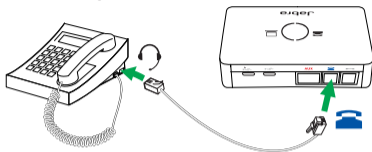


ENGLISH .....	1	РУССКИЙ .....	17
FRANÇAIS.....	3	ČEŠTINA.....	19
DEUTSCH .....	5	POLSKI .....	21
NEDERLANDS .....	7	TURKCE.....	23
ITALIANO .....	9	繁體中文 .....	25
PORTUGUÊS.....	11	日本語 .....	27
ESPAÑOL .....	13	한국어 .....	29
DANSK (SVENSKA) .....	15	简体中文 .....	31

## Connect to computer

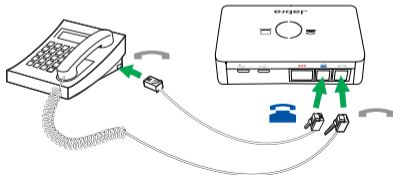


## Connect to desk phone with a headset port\*

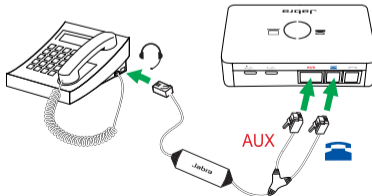


\*RJ45 and 3.5mm cables not supplied.

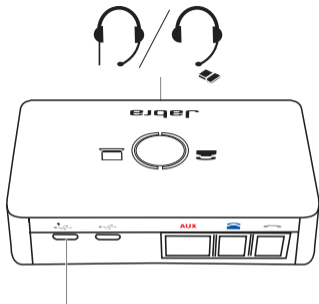
## Connect to desk phone without a headset port



## Connect to desk phone with a Jabra EHS cable\*



\*Jabra EHS cable not supplied.



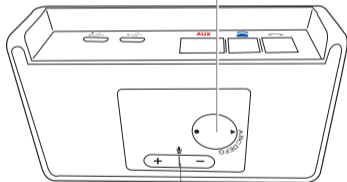
### POWER SUPPLY NOT INCLUDED

A power supply is required for:  
Jabra Evolve 40, Jabra Evolve 80,  
Jabra GN 1000, and Jabra devices when  
using the Jabra Link 360 Bluetooth adaptor.

To purchase a power supply go to  
[jabra.com/accessories](http://jabra.com/accessories)

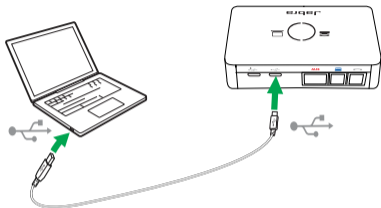
If you do not hear a dial tone in your headset, rotate this dial until you hear a dial tone.

The dial tone will be strong, clear and undistorted.

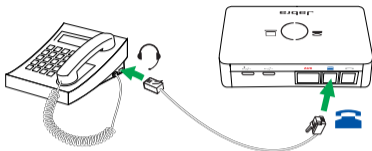


Adjust the volume of your microphone.  
Too high volume may cause an echo.

## Connexion à un ordinateur

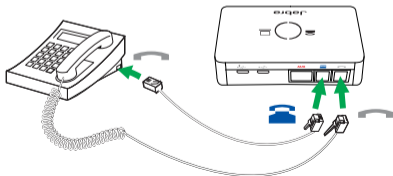


## Connexion à un téléphone fixe avec port casque\*

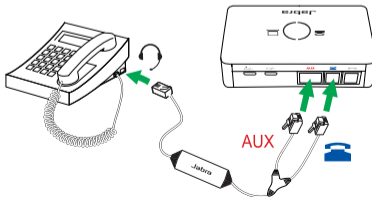


\*Câbles RJ45 et 3,5 mm non fournis.

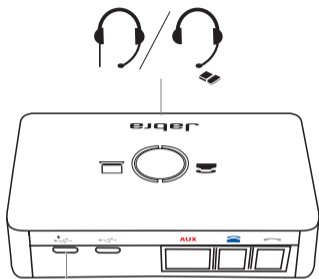
## Connexion à un téléphone fixe sans port casque



## Connexion à un téléphone fixe avec un câble EHS Jabra\*



\*Câble EHS Jabra non fourni.



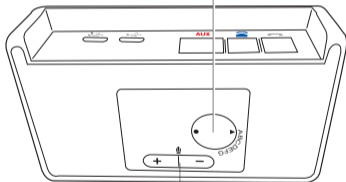
### ALIMENTATION ÉLECTRIQUE NON INCLUSE

Une alimentation électrique est indispensable pour : Jabra Evolve 40, Jabra Evolve 80, Jabra GN 1000 et les appareils Jabra lorsque vous utilisez l'adaptateur Bluetooth Jabra Link 360.

Pour acheter une alimentation électrique, rendez-vous sur [jabra.com/accessories](http://jabra.com/accessories)

Si vous n'entendez pas de tonalité dans votre micro-casque, tournez ce cadran jusqu'à ce que vous entendiez une tonalité.

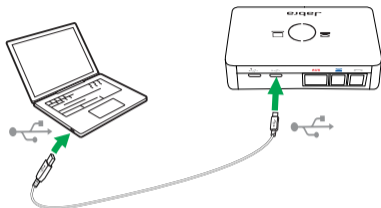
La tonalité sera forte, claire et non déformée.



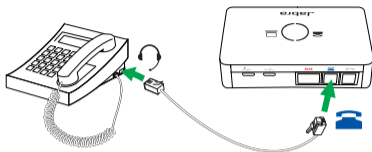
Réglez le volume de votre microphone. Un volume trop élevé peut provoquer de l'écho.



## Anschluss an einen Computer

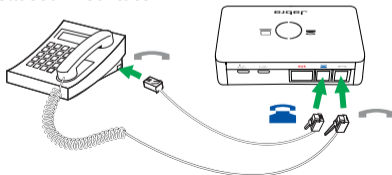


## Verbindung mit einem Tischtelefon mit Headset-Anschluss\*

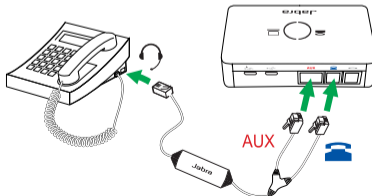


\*RJ45 und 3,5-mm-Kabel nicht im Lieferumfang.

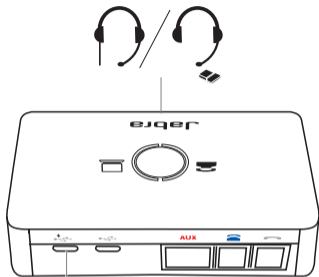
## Verbindung mit einem Tischtelefon ohne Headset-Anschluss



## Verbindung mit einem Tischtelefon über ein Jabra EHS-Kabel\*



\*Jabra EHS-Kabel nicht im Lieferumfang.



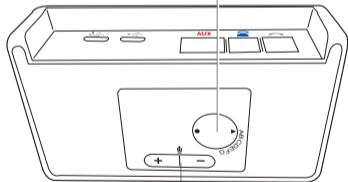
### NETZADAPTER NICHT ENTHALTEN

Ein Netzadapter ist erforderlich für: Jabra Evolve 40, Jabra Evolve 80, Jabra GN 1000 und andere Jabra-Geräte, sofern der Jabra Link 360 Bluetooth-Adapter verwendet wird.

Zum Kauf eines Netzgeräts gehen Sie bitte auf [jabra.com/accessories](http://jabra.com/accessories)

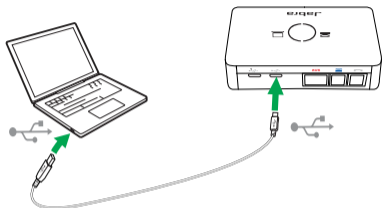
Falls Sie keinen Wählton im Headset hören, verstellen Sie diese Scheibe, bis ein Wählton zu hören ist.

Der Wählton sollte stark, klar und unverzerrt sein.

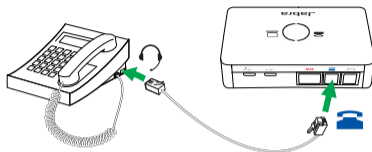


Regeln Sie die Lautstärke Ihres Mikrofons. Zu hohe Lautstärke kann ein Echo verursachen.

## Aansluiten op computer

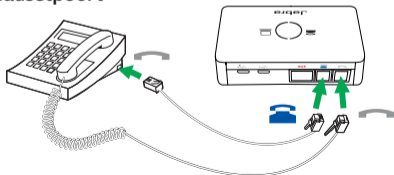


## Aansluiten op bureautelefoon met een headsetpoort\*

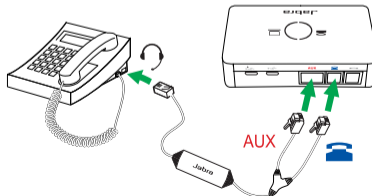


\*RJ45- en 3,5 mm-kabels niet meegeleverd.

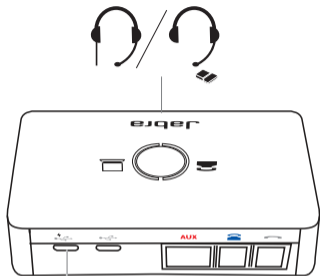
## Aansluiten op bureautelefoon zonder headsetpoort



## Aansluiten op bureautelefoon met een Jabra EHS-kabel\*



\*Jabra EHS-kabel niet meegeleverd.



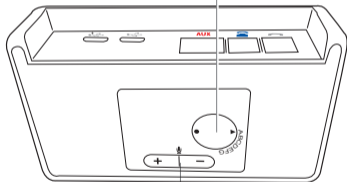
### VOEDINGSADAPTER NIET INBEGREPEN

Een voedingsadapter is vereist voor:  
 Jabra Evolve 40, Jabra Evolve 80,  
 Jabra GN 1000 en Jabra-producten bij gebruik  
 van Jabra Link 360 Bluetooth-adapter.

U kunt een voedingsadapter kopen op  
[jabra.com/accessories](http://jabra.com/accessories)

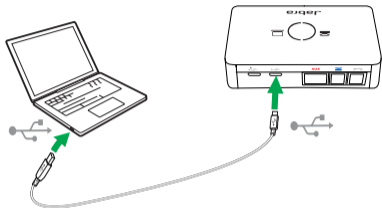
Als u geen kiestoon hoort door uw headset, draai dan aan deze knop tot u een kiestoon hoort.

De kiestoon moet sterk, helder en onvervormd hoorbaar zijn.

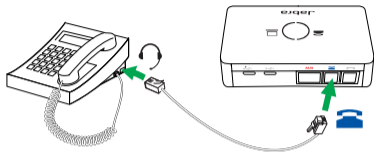


Pas het volume van uw microfoon aan.  
 Een te hoog volume veroorzaakt echo's.

## Connessione a un computer

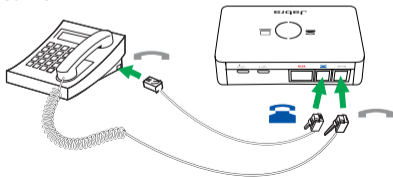


## Connessione a un telefono fisso con porta per le cuffie\*

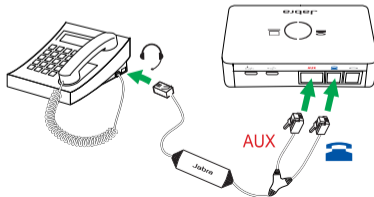


\* Cavi RJ45 e 3,5 mm non in dotazione.

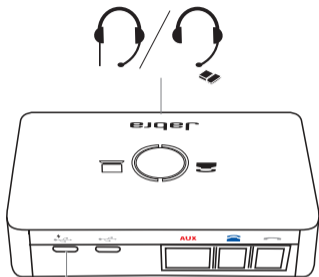
## Connessione a un telefono fisso senza porta per le cuffie



## Connessione a un telefono fisso con il cavo EHS Jabra\*



\* Cavo EHS Jabra non in dotazione.



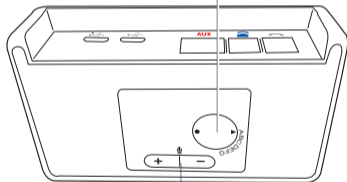
### ALIMENTATORE NON INCLUSO

È necessario un alimentatore per Jabra Evolve 40, Jabra Evolve 80, Jabra GN 1000 e i dispositivi Jabra se si utilizza l'adattatore Bluetooth Jabra Link 360.

Per acquistare l'alimentatore, visita [jabra.com/accessories](http://jabra.com/accessories)

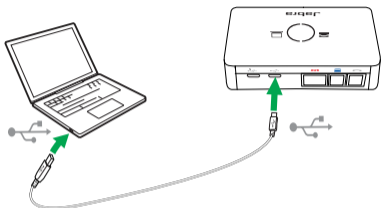
Se non senti il segnale della linea libera nelle cuffie, ruota la rotella fino a percepirlo.

Il segnale di linea dovrebbe essere forte, nitido e non distorto.

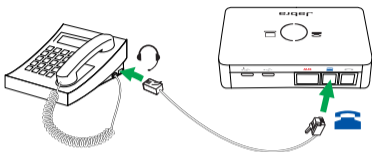


Regola il volume del microfono. Un volume troppo alto potrebbe causare un'eco.

## Ligar a um computador

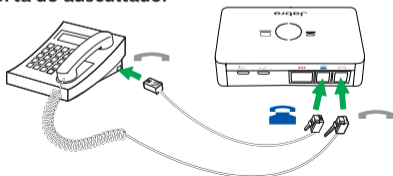


## Ligar a um telefone de secretária com entrada de auscultador\*

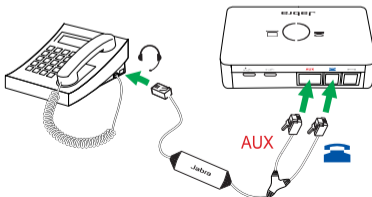


\*Os cabos RJ45 e 3,5 mm não estão incluídos.

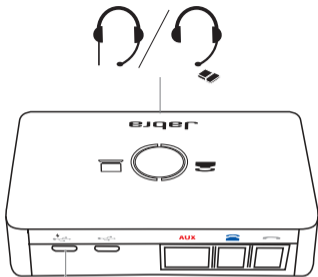
## Ligar a um telefone de secretária sem uma porta do auscultador



## Ligar a um telefone de secretária com um cabo Jabra EHS\*



\*O cabo Jabra EHS não é fornecido.



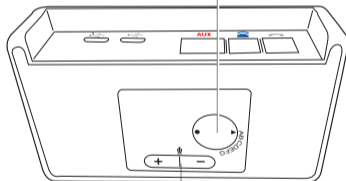
### FONTE DE ALIMENTAÇÃO NÃO INCLUÍDA

É necessária uma fonte de alimentação para: o Jabra Evolve 40, Jabra Evolve 80, Jabra GN 1000 e dispositivos Jabra aquando da utilização do adaptador de Bluetooth do Jabra Link 360.

Para comprar uma fonte de alimentação vá a [jabra.com/accessories](http://jabra.com/accessories)

Se não ouvir um som de marcação no seu auscultador, faça girar este marcador até ouvir um som de marcação.

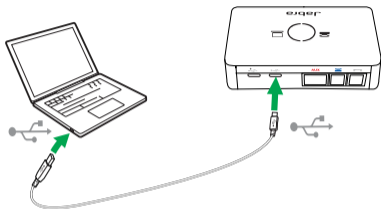
O som de marcação será forte, claro e sem distorção.



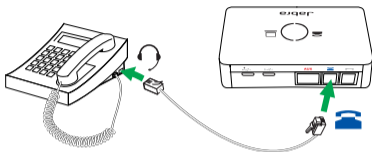
Ajuste o volume do seu microfone. Um volume demasiado elevado por causar eco.



## Conexión con un ordenador

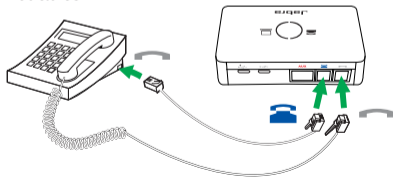


## Conexión con un teléfono fijo con puerto para auriculares\*

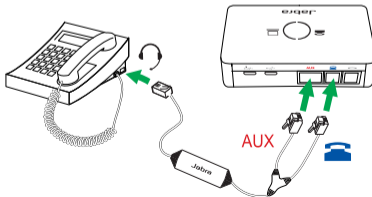


\*Cables RJ45 y 3,5 mm no incluidos.

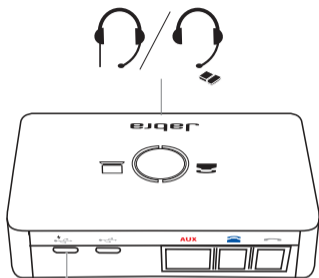
## Conexión con un teléfono fijo sin puerto para auriculares



## Conexión con un teléfono fijo con un cable Jabra EHS\*



\*Cable Jabra EHS no incluido.



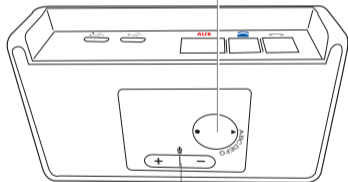
### CABLE DE ALIMENTACIÓN NO INCLUIDO

El cable de alimentación es necesario para:  
 Jabra Evolve 40, Jabra Evolve 80,  
 Jabra GN 1000 y dispositivos Jabra al  
 usar el adaptador Bluetooth Jabra Link 360.

Para adquirir un cable de alimentación, vaya a  
[jabra.com/accessories](http://jabra.com/accessories)

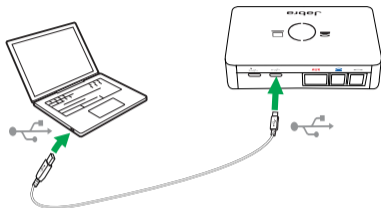
Si no oye un tono de marcado en su auricular, gire el disco hasta que oiga un tono de marcado.

El tono de marcado debe sonar fuerte, claro y sin distorsión.

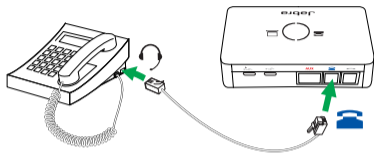


Ajuste el volumen del micrófono. Si el volumen es demasiado alto, podría causar eco.

## Opret forbindelse (anslut) til computer

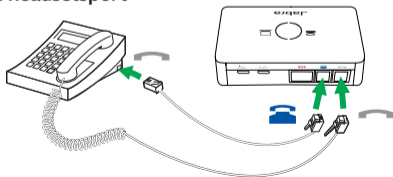


## Opret forbindelse (anslut) til bordtelefon med en headsetsindgang\*

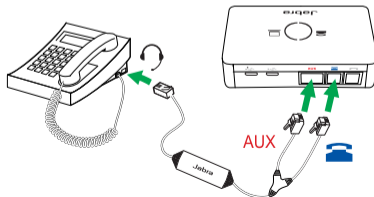


\*RJ45 og 3,5 mm-kabler medfølger ikke.

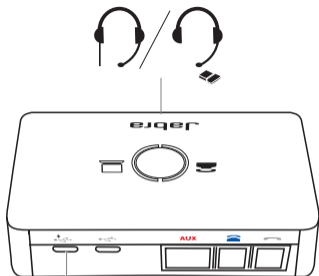
## Opret forbindelse (anslut) til bordtelefon uden en headsetsport



## Opret forbindelse (anslut) til bordtelefon med en Jabra EHS-kabel\*



\*Jabra EHS-kabel medfølger ikke.



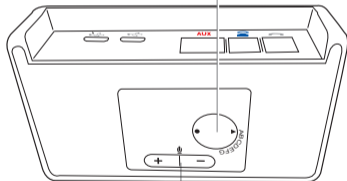
### STRØMFORSYNING (STRÖMKÄLLA) ER IKKE INKLUDERET (INGÅR INTE)

Der kræves en strømforsyning (strömkälla) til: Jabra Evolve 40, Jabra Evolve 80, Jabra GN 1000, og Jabra enheder, når Jabra Link 360 Bluetooth-adapteren bruges (används).

For at købe en strømforsyning (strömkälla), gå til [jabra.com/accessories](http://jabra.com/accessories)

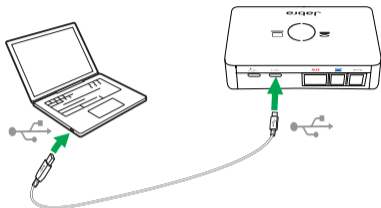
Hvis du ikke høre en klartone (klarsignal) i dit headset, skal du rotere skiven (vrida på ratten), indtil du hører en ringetone.

Ringetonen vil være klar og uforvrænget (oförvrängd).

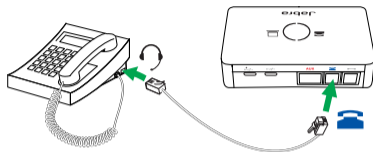


Juster volumen på din mikrofon. En høj volumen kan forårsage (orsaka) et ekko.

## Подключение к компьютеру

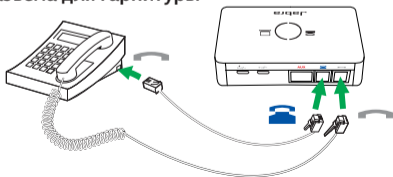


## Подключение к настольному телефону с разъемом для гарнитуры\*

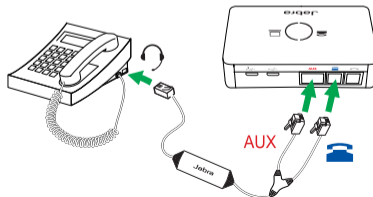


\*Кабели с разъемами RJ45 и 3,5 мм не входят в комплект поставки.

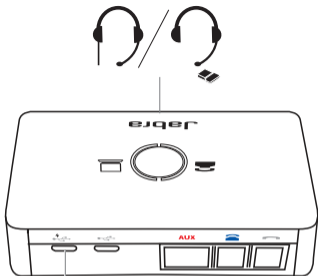
## Подключение к настольному телефону без разъема для гарнитуры



## Подключение к настольному телефону с кабелем EHS от Jabra\*



\*Кабель EHS Jabra не входит в комплект поставки.



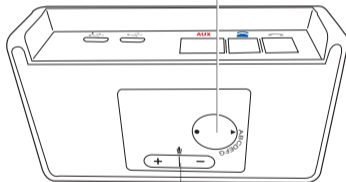
### АДАПТЕР ПИТАНИЯ НЕ ВХОДИТ В КОМПЛЕКТ ПОСТАВКИ

Адаптер питания необходим для: Jabra Evolve 40, Jabra Evolve 80, Jabra GN 1000 и устройств Jabra при использовании адаптера Bluetooth Jabra Link 360.

Чтобы приобрести адаптер питания, перейдите на страницу [jabra.com/accessories](http://jabra.com/accessories)

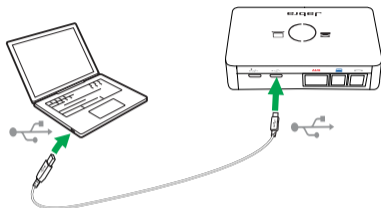
Если вы не слышите сигнал ответа станции в наушниках, поверните эту ручку, пока не услышите сигнал ответа станции.

Сигнал ответа станции будет громким, чистым и неискаженным.

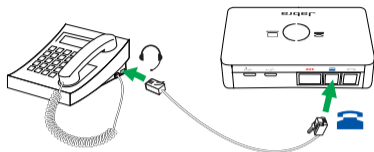


Настройте громкость звучания речи во время телефонного разговора. При слишком высокой громкости может возникнуть эхо.

## Připojení k počítači

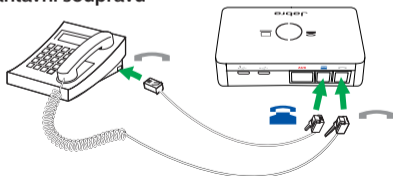


## Připojení ke stolnímu telefonu s portem pro náhlavní soupravu\*

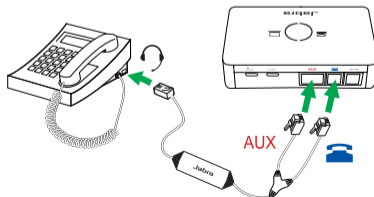


Kabely RJ45 a 3,5 mm nejsou součástí dodávky.

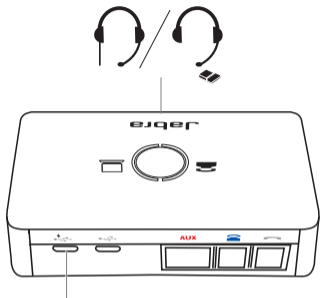
## Připojení ke stolnímu telefonu bez portu pro náhlavní soupravu



## Připojení ke stolnímu telefonu s kabelem Jabra EHS\*



\*Kabel Jabra EHS není součástí dodávky.



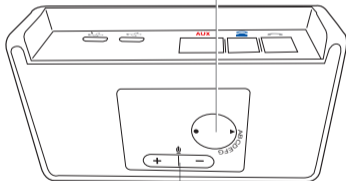
### NAPÁJECÍ ZDROJ NENÍ SOUČÁSTÍ BALENÍ

Napájecí zdroj je zapotřebí pro:  
 Jabra Evolve 40, Jabra Evolve 80,  
 Jabra GN 1000 a zařízení Jabra  
 s adaptérem Bluetooth Jabra Link 360.

Chcete-li zakoupit napájecí zdroj, přejděte na stránku [jabra.com/accessories](http://jabra.com/accessories)

Není-li v náhlavní soupravě slyšet oznamovací tón, otáčejte voličem, dokud nezazní.

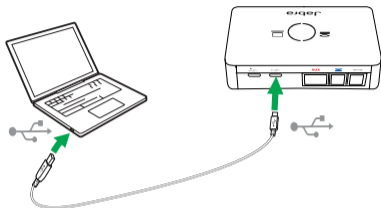
Oznamovací tón vytáčení by měl být silný, jasný a nezkreslený.



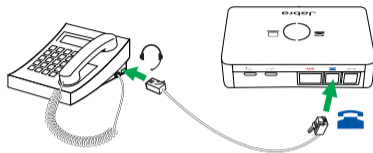
Nastavení hlasitosti mikrofonu. Příliš vysoká hlasitost může způsobit ozvěnu.



## Podłączenie do komputera

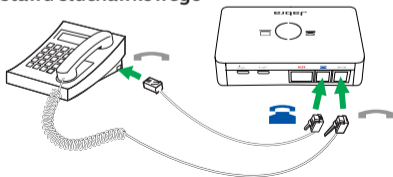


## Łączenie z telefonem stacjonarnym z gniazdem zestawu słuchawkowego\*

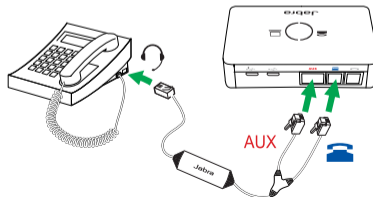


\*Przewody RJ45 i 3,5 mm nie są dołączone.

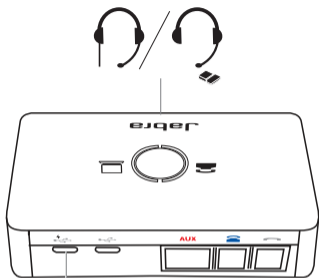
## Łączenie z telefonem stacjonarnym bez gniazda zestawu słuchawkowego



## Łączenie z telefonem stacjonarnym przewodem Jabra EHS\*



\*Przewód Jabra EHS nie jest dołączony.



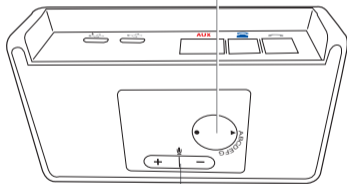
### ZASILACZ NIE JEST DOŁĄCZONY DO ZESTAWU

Do następujących urządzeń potrzebny jest zasilacz: Jabra Evolve 40, Jabra Evolve 80, Jabra GN 1000 i urządzenia Jabra podczas stosowania adaptera Bluetooth Jabra Link 360.

Zasilacz można kupić na stronie [jabra.com/accessories](http://jabra.com/accessories)

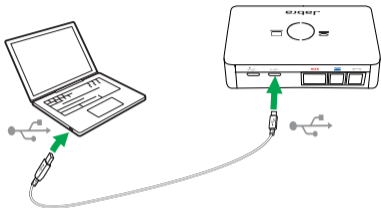
Jeśli w zestawie słuchawkowym nie słychać sygnału wybierania, obracaj to pokrętko, aż sygnał będzie słyszalny.

Sygnał wybierania powinien być wyraźny, czysty i bez zniekształceń.

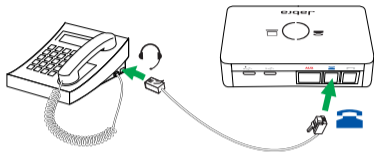


Wyreguluj czułość mikrofonu. Zbyt wysoka czułość może spowodować echo.

## Bilgisayara bağlama

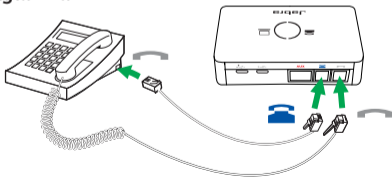


## Kulaklık girişi olan masaüstü telefona bağlanma\*

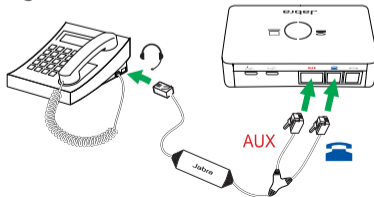


\*RJ45 ve 3,5 mm'lik kablolar ayrı olarak temin edilmelidir.

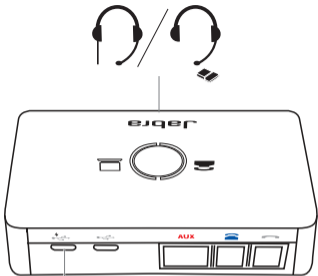
## Kulaklık girişi olmayan masaüstü telefona bağlanma



## Jabra EHS kablosuyla masaüstü telefona bağlanma\*



\*Jabra EHS kablosu ayrı olarak temin edilmelidir.



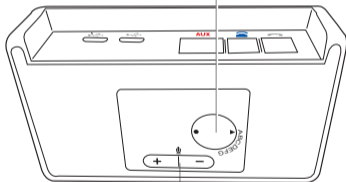
### GÜÇ KAYNAĞI DÂHİL DEĞİLDİR

Güç kaynağının gerekli olduğu durumlar: Jabra Evolve 40, Jabra Evolve 80, Jabra GN 1000 ve çeşitli Jabra cihazlar Jabra Link 360 Bluetooth adaptörü ile birlikte kullanıldığı zaman.

Bir güç kaynağı satın almak için [jabra.com.tr/accessories](http://jabra.com.tr/accessories) sayfasını ziyaret edin

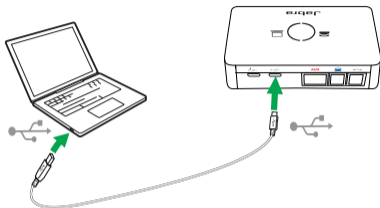
Eğer kulaklıkta çevir sesi duymuyorsanız, çevir sesi duyana kadar bu şalteri döndürün.

Çevir sesi güçlü, net ve bozulmadan duyulacaktır.

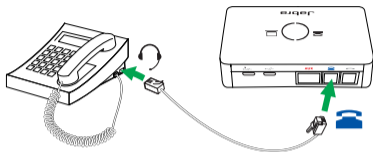


Mikrofonunuzun ses seviyesini ayarlayın. Ses seviyesinin çok yüksek olması sesin yankılanmasına neden olabilir.

## 連接電腦

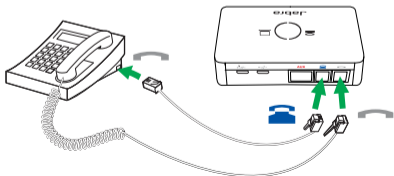


## 連接有耳機埠的桌上型電話機\*

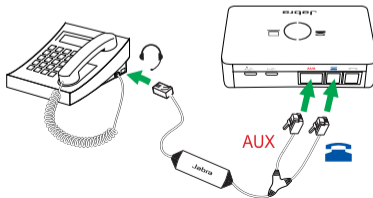


\* 未附 RJ45 及 3.5mm 連接線。

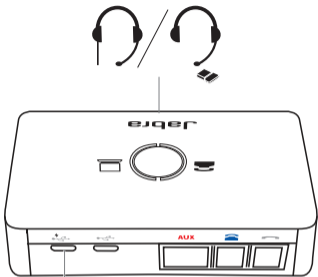
## 連接無耳機埠的桌上型電話機



## 用 Jabra EHS 連接線連接桌上型電話機\*



\* 未附 Jabra EHS 連接線。



### 產品未附電源供應器

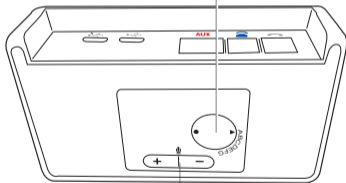
下列產品需要電源供應器：

Jabra Evolve 40、Jabra Evolve 80、Jabra GN 1000 及使用 Jabra Link 360 藍牙傳輸器之 Jabra 裝置。

如需購買電源供應器，請上網至 [jabra.com/accessories](http://jabra.com/accessories)

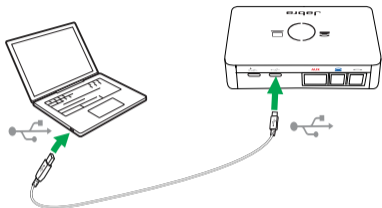
若耳機中聽不見撥號音，請旋轉此旋鈕，直到你聽見撥號音為止。

撥號音應響亮、清晰且無失真。

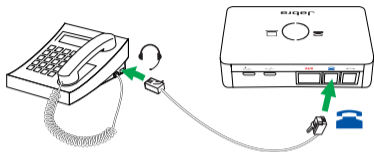


調整麥克風音量。音量太大可能會產生回音。

## コンピュータへの接続

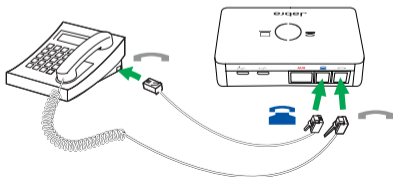


## ヘッドセットポートを使用したデスクホンへの接続\*

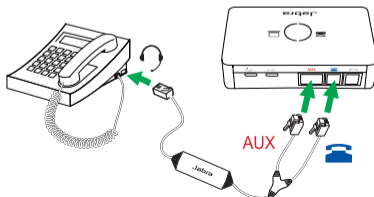


\* RJ45 と 3.5mm のケーブルは付属していません。

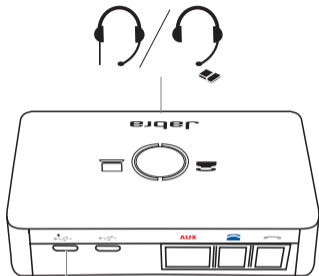
## ヘッドセットポートを使用しないデスクホンへの接続



## Jabra EHS ケーブルを使用したデスクホンへの接続\*



\* Jabra EHS ケーブルは付属していません。



### 電源は付属していません

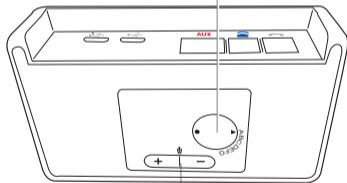
次の製品に電源が必要です。

Jabra Evolve 40、Jabra Evolve 80、  
Jabra GN 1000、Jabra Link 360 Bluetooth アダ  
プターを使用する Jabra デバイス。

電源アダプターは、[jabra.com/accessories](http://jabra.com/accessories) でご  
購入いただけます。

ヘッドセットで発信音が聞こえない場合  
は、発信音が聞こえるまでこのダイヤル  
を回します。

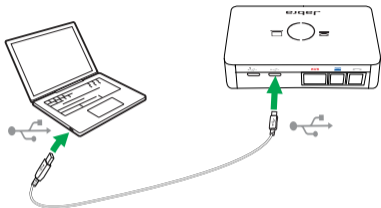
強く、明瞭で、ひずみがない発信音が聞  
こえます。



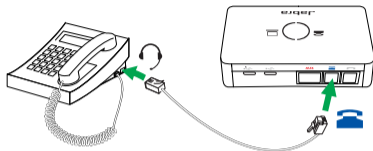
マイク音量を調整します。音量が大きすぎ  
るとエコーが生じます。



## 컴퓨터에 연결

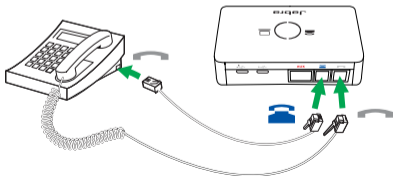


## 헤드셋 포트가 있는 데스크폰 연결하기\*

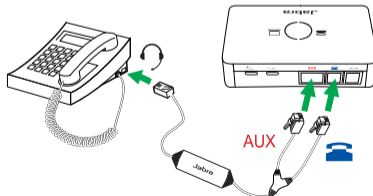


\* RJ45 및 3.5mm 케이블은 제공되지 않습니다.

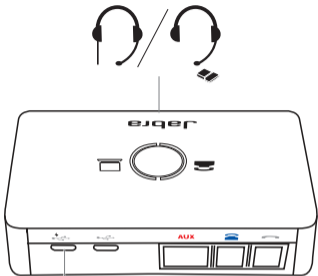
## 헤드셋 포트가 없는 데스크폰 연결하기



## Jabra EHS 케이블을 사용하여 데스크폰에 연결하기\*



\* Jabra EHS 케이블은 제공되지 않습니다.



### 전원 공급 장치 미포함

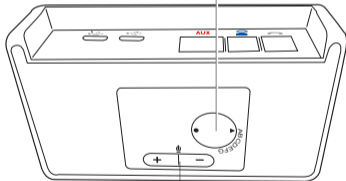
전원 공급 장치 필요함:

Jabra Link 360 Bluetooth 어댑터를 사용하는 경우 Jabra Evolve 40, Jabra Evolve 80, Jabra GN 1000 및 Jabra 장치가 있어야 합니다.

전원 공급 장치를 구매하려면 [jabra.com/accessories](http://jabra.com/accessories)로 이동하십시오.

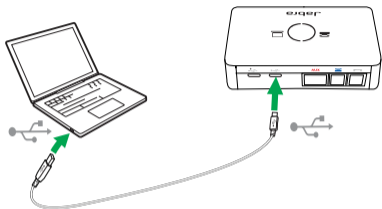
헤드셋에서 발신음이 들리지 않으면 발신음이 들릴 때까지 이 다이얼을 돌리십시오.

발신음은 강하고 뚜렷하고 왜곡되지 않을 것입니다.

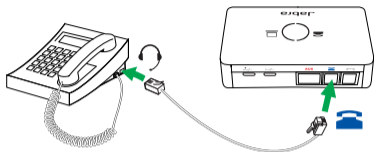


마이크의 음량을 조절하십시오. 음량이 너무 높으면 에코가 발생할 수 있습니다.

## 连接到电脑

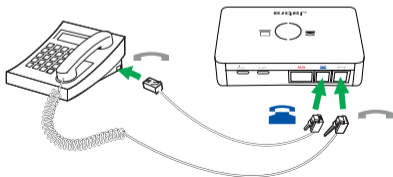


## 连接到带有耳麦端口的桌面电话\*

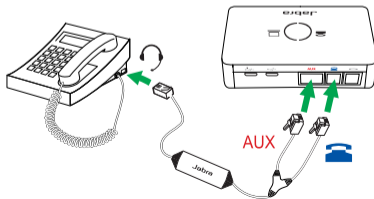


\* 未提供 RJ45 和 3.5 毫米线缆。

## 连接到不带耳麦端口的桌面电话



## 使用 Jabra EHS 线缆连接到桌面电话\*



\* 未提供 Jabra EHS 线缆。



### 不含电源

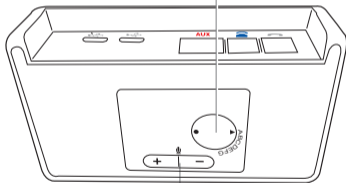
以下产品需要电源：

Jabra Evolve 40、Jabra Evolve 80、  
Jabra GN 1000 以及其他 Jabra 设备 (使用  
Jabra Link 360 蓝牙适配器时)。

如要购买电源，请访问 [jabra.com/accessories](http://jabra.com/accessories)

如果耳麦中没有听到拨号音，转动此拨盘直至听到拨号音。

拨号音强劲、清晰且不失真。



调节麦克风音量。音量太大可能会引起回声。



本产品符合中国[电器电子产品有害物质限制使用管理办法]-简称中国ROHS，  
本产品及其包装材料可能包含有害物质的名称和含量，如下所示：

部件名称	有害物质					
	铅 (Pb)	汞 (Hg)	镉 (Cd)	六价铬 (Cr (VI))	多溴联苯 (PBB)	多溴二苯醚 (PBDE)
电子元器件	X	0	0	0	0	0
连接器	X	0	0	0	0	0
麦克风	X	0	0	0	0	0
交流电源插头 (若提供了交流充电器)	X	0	0	0	0	0

本表格依据SJ/T 11364 的规定编制。

0: 表示该有害物质在该部件所有均质材料中的含量低于GB/T 26572规定的限量要求。  
X: 表示该有害物质至少在该部件的某一均质材料中的含量超出GB/T 26572规定的限量要求。  
所有显示 X 的情况，是按照欧盟 RoHS 采用了容许的豁免指标。

如本手册所述，在正常使用条件下，本产品的环保使用期为 10 年。在此期间，产品不会泄露任何危险物质。  
本产品可以回收，必须按照当地法规处理。

© 2019 GN Audio. All rights reserved. Jabra® is a registered trademark of GN Audio.

---

MADE IN CHINA

MODEL: ENC090 (USB-A)/ENC091(USB-C)

